

GOLD RIVER'S PREMIER OFFICE PARK



11344 COLOMA ROAD  
GOLD RIVER, CA

# REGENTS PARK

±140,500 SF OFFICE PARK

Available Suites Ranging from ±1,000 - ±4,100 SF



G O L D R I V E R ' S P R E M I E R O F F I C E P A R K



11344 GOLDMA ROAD  
GOLD RIVER, CA

# REGENTS PARK

CUSHMAN & WAKEFIELD INC - 400 Capitol Mall, Suite 1800, Sacramento, CA 95814 • +1 916.288.4800 • LIC. #00616335

**+1 916 288 4800**



**CUSHMAN &  
WAKEFIELD**

11344 COLOMA ROAD  
11344 GOLD RIVER, CA



Easy Access to Highway 50



Serene Park-Like Environment



On-Site Amenities Include:  
Fitness Facility, Showers, Cafe,  
Tenant Lounge, Property  
Management Office  
& Shared Conference Room



Ample Amount of Parking



Walking Distance to  
American River Bike Trail



PROPERTY

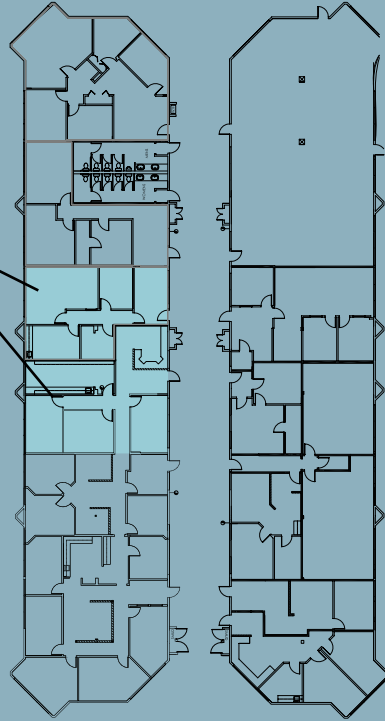
# HIGHLIGHTS

# 1st Floor AVAILABILITIES

BLOCK 100 & 200			
SUITE #	AREA	SUITE #	AREA
112	±1,086 RSF	145	±1,378 RSF
BLOCK 300 & 400			
SUITE #	AREA	SUITE #	AREA
435	±1,480 RSF		
BLOCK 500			
SUITE #	AREA	SUITE #	AREA
545	±1,601		
Available in 30 Days			
BLOCK 700 & 800			
SUITE #	AREA	SUITE #	AREA
708	±1,050 RSF	840	±1,378 RSF
825	±1,300 RSF	845	±1,998 RSF

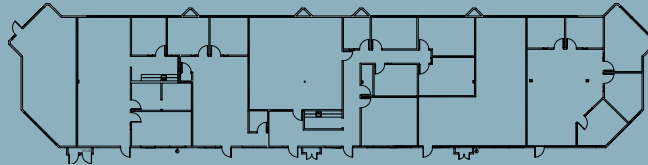
BUILDING 100

SUITE 112  
SUITE 145

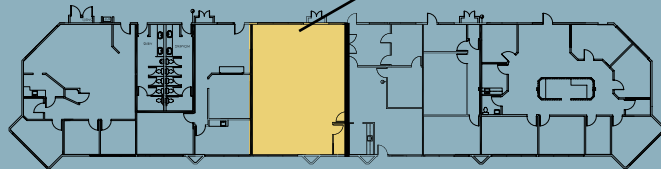


BUILDING 200

BUILDING 300



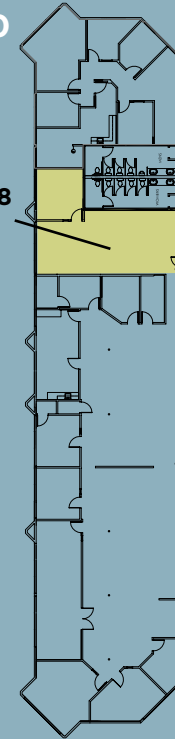
BUILDING 400



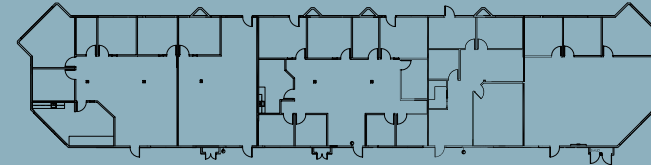
SUITE 435

BUILDING 700

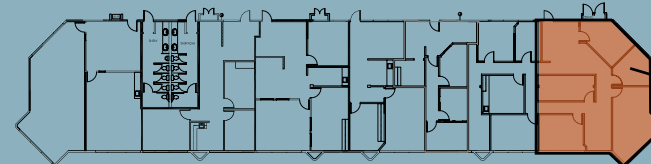
SUITE 708



BUILDING 600



BUILDING 500



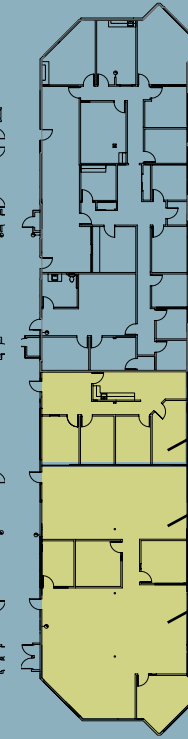
SUITE 545  
Available in 30 Days

BUILDING 800

SUITE 825

SUITE 840

SUITE 845

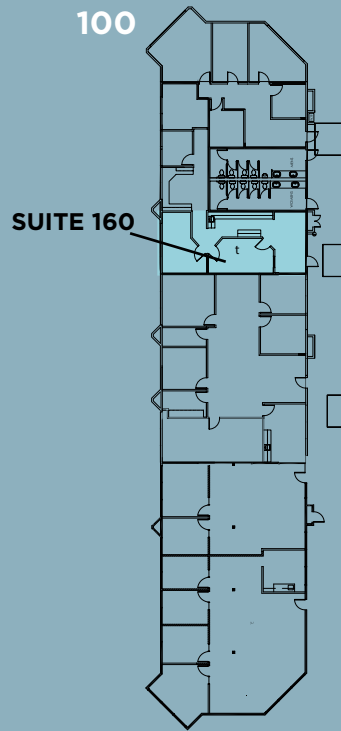


11344 GOLD RIVER, CA  
G O L O M A R O A D

# AVAILABILITIES

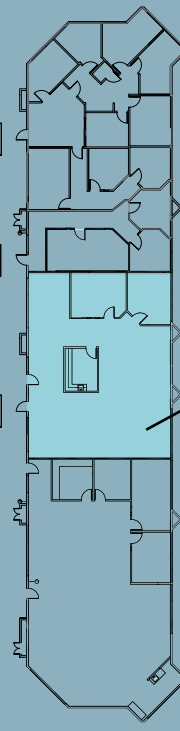
11344 COLOMA ROAD  
GOLD RIVER, CA

BUILDING 100



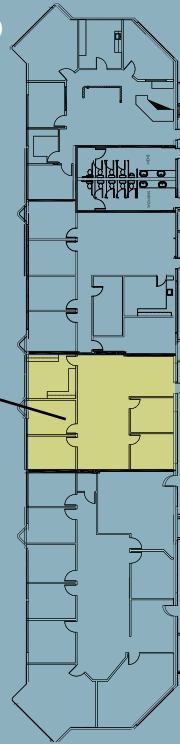
SUITE 160

BUILDING 200



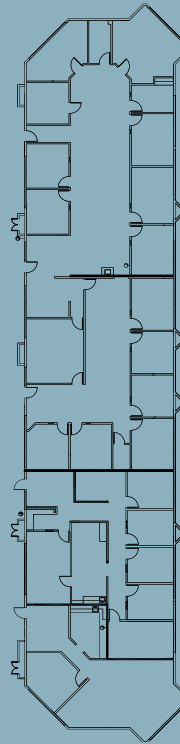
SUITE 270

BUILDING 700

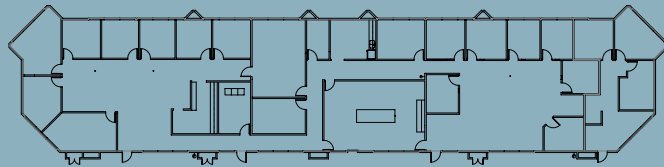


SUITE 750

BUILDING 800

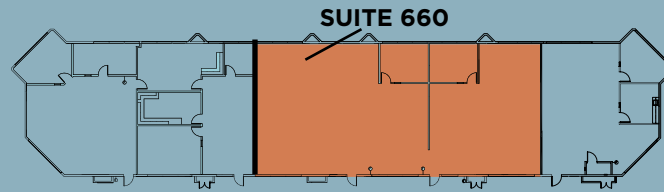


BUILDING 300



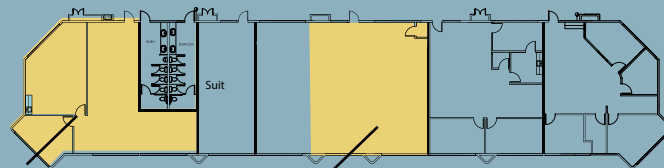
SUITE 450

BUILDING 600



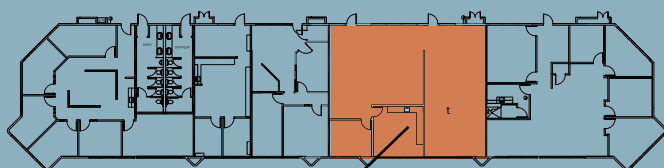
SUITE 660

BUILDING 400



SUITE 470

BUILDING 500



SUITE 580

# 2<sup>ND</sup> Floor AVAILABILITIES

## BLOCK 100 & 200

SUITE #	AREA	SUITE #	AREA
160	±1,167 RSF	270	±2,509 RSF

## BLOCK 300 & 400

SUITE #	AREA	SUITE #	AREA
450	±2,914 RSF	470	±1,640 RSF

## BLOCK 500 & 600

SUITE #	AREA	SUITE #	AREA
580	±2,293 RSF	660	±4,101 RSF

## BLOCK 700 & 800

SUITE #	AREA	SUITE #	AREA
750	±1,520 RSF		

# AVAILABILITIES



REGENTS PARK

# GALLERY



11344 GOLD RIVER, CA

11344 GOLD RIVER, CA

11344 COLOMA ROAD  
GOLD RIVER, CA

ADJACENT TO  
THE AMERICAN RIVER BIKE TRAIL

REGENTS PARK

# NEIGHBORHOOD



CAFES SHOPS & RESTAURANTS  
IN THE AREA



CLOSE TO RESTAURANTS



CLOSE PROXIMITY TO GYMS &  
OTHER FITNESS CENTERS

# REGENTS PARK

## LOCATION



## NEIGHBORHOOD

1	APPLE BEES GRILL + BAR	STARBUCKS
	IL FORNO CLASSICO	OUTBACK STEAKHOUSE
	BANK AMERICA	WELLS FARGO
	BELAIR	JACK'S URBAN EATS
	WELLSFARGO	RITE AID
	CHASE BANK	UPS STORE
	MOUNTAIN MIKE'S PIZZA	ZINFANDEL CALIFORNIA CUISINE
2	CARL'S JR	24 FITNESS
	DOMINIO'S PIZZA	IHOP
	SUBWAY	MEN'S WAREHOUSE
	INDIAN SPICE	BASKIN-ROBBINS
	CHINA STAR	SKY SUSHI
	CHICK-FIL-A	CARL'S JR
	SPORTMAN'S WAREHOUSE	DENNY'S
	DICKEY'S BBQ PIT	THAI SMILE
	IN-N-OUT	PIZZA GUYS
	CALIFORNIA FITNESS	MCDONALDS
AVIS/BUDGET CAR RENTAL	STARBUCKS	

11344 GOLOMA ROAD  
GOLD RIVER, CA

## CONTACT

### SEAN MULLEN

Associate Director

sean.mullen@cushwake.com

LIC #01845406

### KEVIN PARTINGTON

Executive Director

kevin.partington@cushwake.com

LIC #01193241

### SPENCER NIELSEN

Associate

spencer.nielsen@cushwake.com

LIC #01964163



400 Capitol Mall, Suite 1800  
Sacramento, CA 95814

[cushmanwakefield.com](http://cushmanwakefield.com)

**+1 916 288 4800**