



241
FIFTH
AVENUE

SPACE DETAILS

LOCATION

East block between East 27th and 28th Streets

APPROXIMATE SIZE

Ground Floor 3,214 SF

CEILING HEIGHT

Ground Floor 14 FT

FRONTAGE

25 FT on Fifth Avenue

POSSESSION

Immediate

NEIGHBORS

Eataly, PetSmart, Shake Shack, The LEGO Store, The Smith, Chase Bank, SmileDirectClub, Forward, La Pecora Bianca, Sweetgreen and Wagamama

COMMENTS

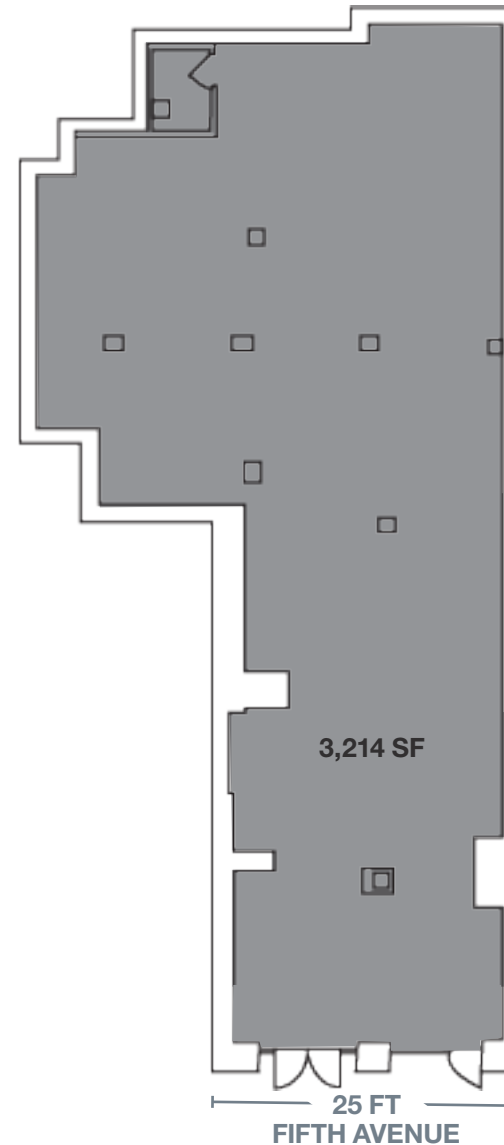
New Construction; brand new all glass facade

Close proximity to hotels, office, and new residential developments

One block from Madison Square Park (60,000 visitors daily)

Non-cooking food uses considered

GROUND FLOOR



AREA RETAIL



CONTACT EXCLUSIVE AGENT

ADAM WEINBLATT
212.372.2103
aweinblatt@ngkf.com



NGKF.COM

© 2020 NEWMARK KNIGHT FRANK RETAIL. The information contained herein has been obtained from sources deemed reliable but has not been verified and no guarantee, warranty or representation, either express or implied, is made with respect to such information. Terms of sale or lease and availability are subject to change or withdrawal without notice.