



## 1031 CAMBRIDGE SQUARE, SUITE “F”

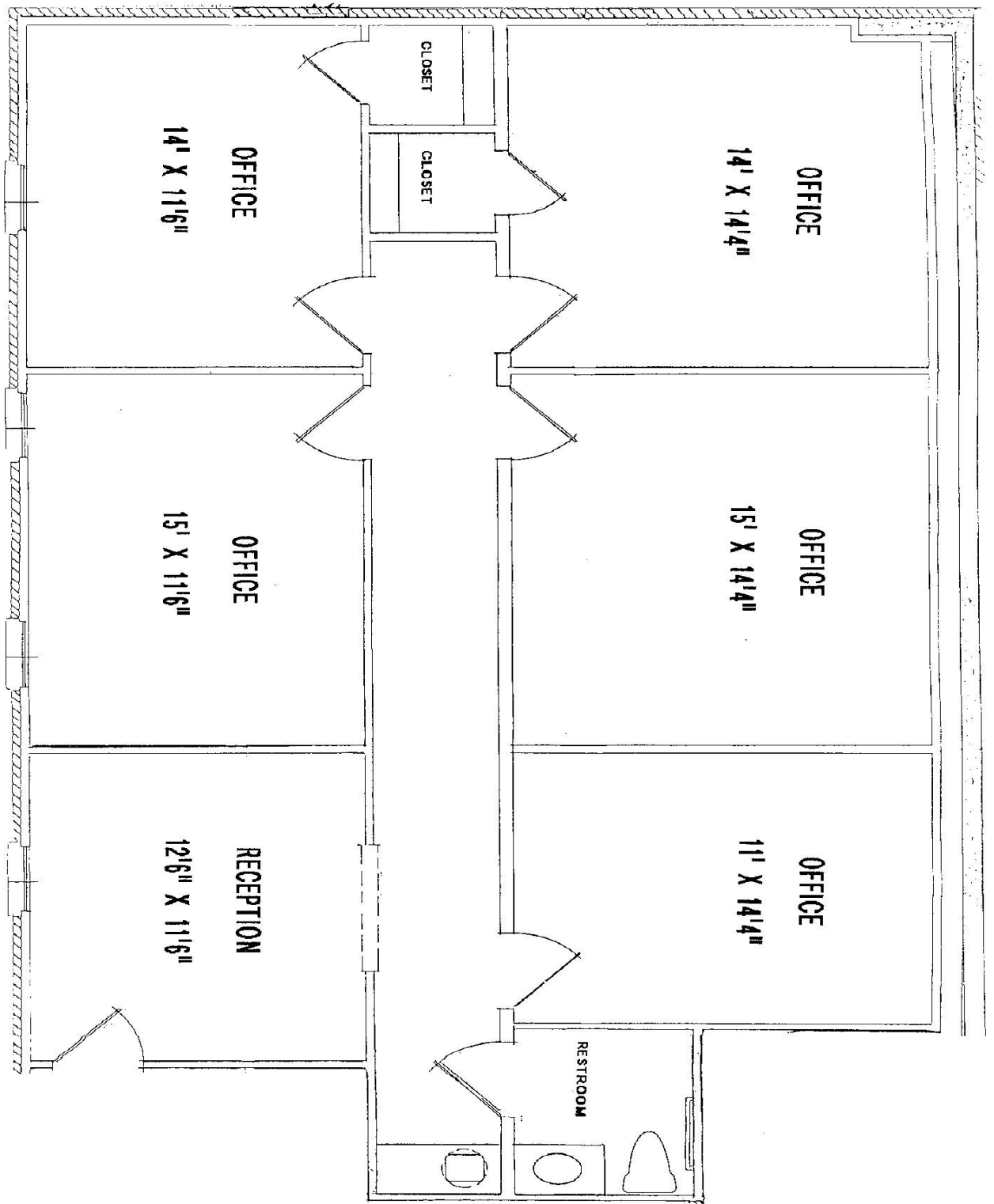
### GENERAL INFORMATION

SIZE	AVAILABLE	RENT	MIN. LEASE TERM	ESCALATION
<b>1500 Sq. Ft. Ground Floor</b>	<b>Immediate</b>	<b>\$1,650.00/Mo</b>	<b>2 Years</b>	<b>3% Annually</b>
<b>!!!!!!!!!!!! JUST RENOVATED !!!!!!!!!!!!!</b>				
<b><i>Premium ground floor suite - handicap accessible.</i></b>				
Suite has its own HVAC system with control located within suite.				
Landlord pays all routine maintenance (HVAC, electric, plumbing) No C.A.M. charge. No “pass through” charges to tenant.				
<b>Hi Speed Internet available - Comcast Cable / Fiber Optic</b>				
<b><i>Professional On-Site Management</i></b>				

↓↓↓ **CLICK “NEXT” TO SEE FLOOR PLAN** ↓↓↓

**For more information contact Wayne Giglia, 770-475-8035**

The information contained herein is believed to be accurate but is not warranted.  
Prices, terms and availability subject to change without notice.



**1031 SUITE "F" - 1500 SF**

**DIMENSIONS ARE APPROXIMATE - ACTUAL SIZES MAY VARY**