

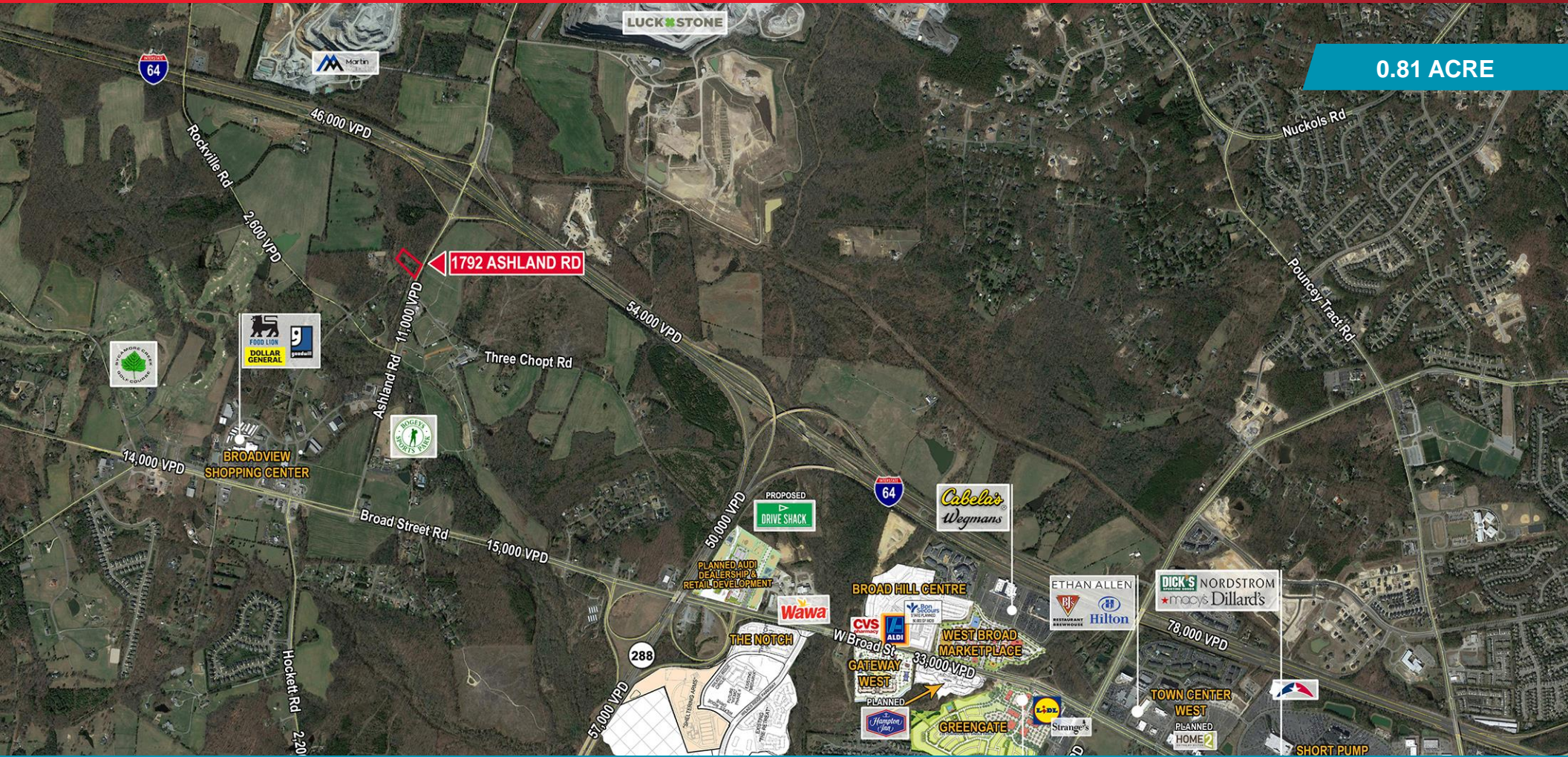


**THALHIMER**

# LAND FOR SALE Development Parcel

1792 Ashland Road | Goochland County, Virginia

**0.81 ACRE**



**Immediate Access to Interstate 64**

For more information, contact:

**MARK DOUGLAS, CCIM, SIOR**  
Senior Vice President  
804 697 3418  
[mark.douglas@thalhimer.com](mailto:mark.douglas@thalhimer.com)

Thalhimer Center  
11100 W. Broad Street  
Glen Allen, VA 23060  
[www.thalhimer.com](http://www.thalhimer.com)

Independently Owned and Operated / A Member of the Cushman & Wakefield Alliance

Cushman & Wakefield | Thalhimer © 2015. No warranty or representation, express or implied, is made to the accuracy or completeness of the information contained herein, and same is submitted subject to errors, omissions, change of price, rental or other conditions, withdrawal without notice, and to any special listing conditions imposed by the property owner(s). As applicable, we make no representation as to the condition of the property (or properties) in question.

# LAND FOR SALE Development Parcel

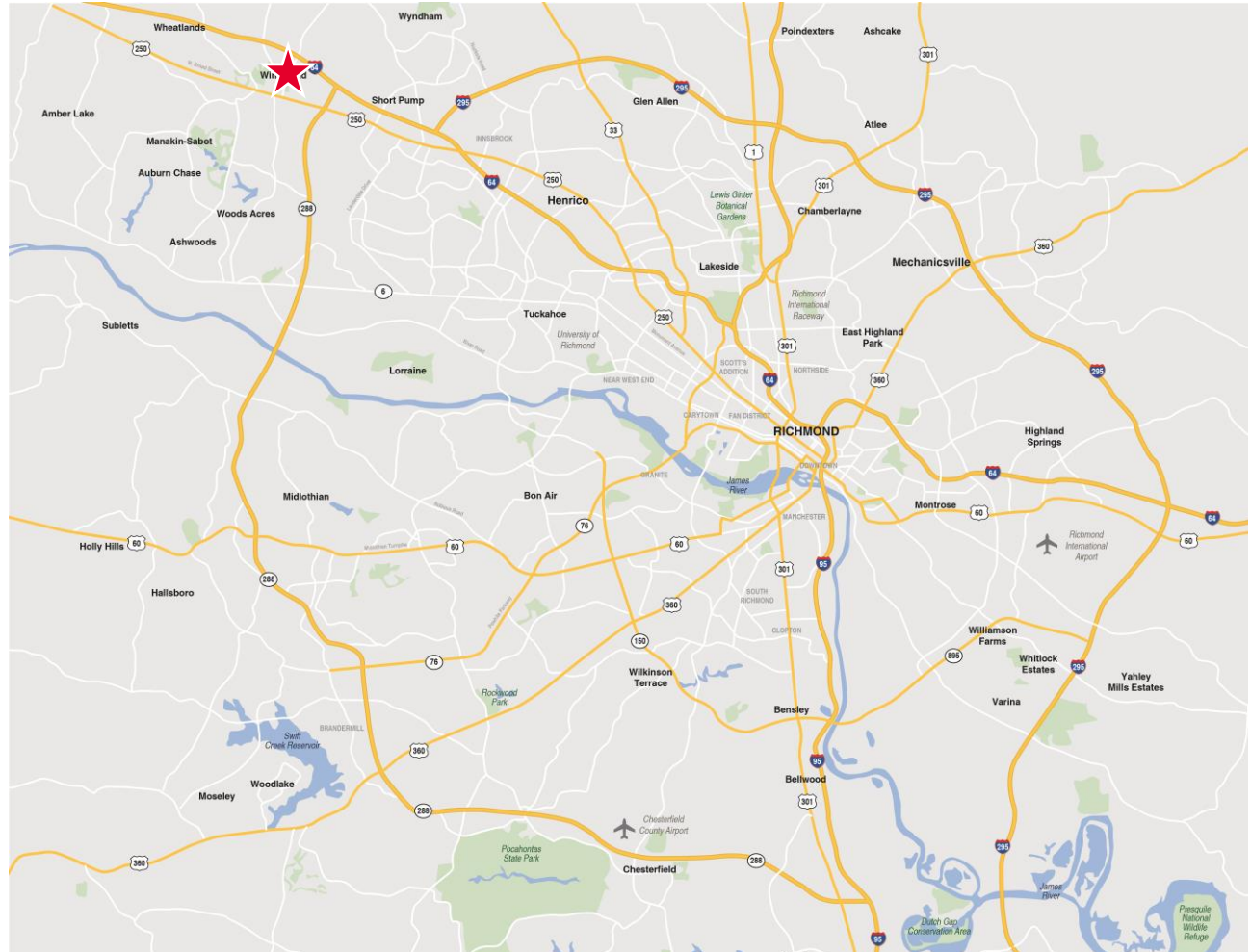
1792 Ashland Road | Goochland County, Virginia

## Property Features

- 0.81 ACRE AVAILABLE
- Immediate access to Interstate 64
- Additional 100' VDOT right of way
- Ideal for QSR development
- Located in Goochland's Commercial Overlay District
- Asking Price - \$500,000

### Demographics

	3 Miles	5 Miles
Estimated Population	14,386	63,419
Est. Households	3,550	22,583
Avg. HH Income	\$172,701	\$138,967
Daytime Population	11,199	28,734



For more information, contact:

**MARK DOUGLAS, CCIM, SIOR**  
Senior Vice President  
804 697 3418  
[mark.douglas@thalhimers.com](mailto:mark.douglas@thalhimers.com)

Thalhimers Center  
11100 W. Broad Street  
Glen Allen, VA 23060  
[www.thalhimers.com](http://www.thalhimers.com)