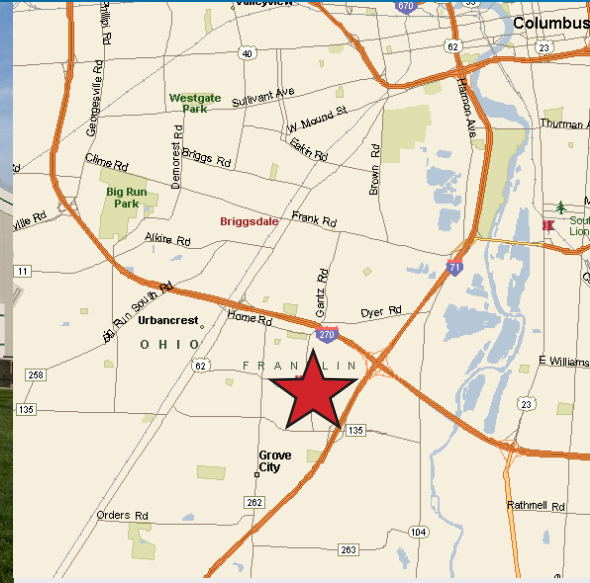


FOR SUBLEASE > INDUSTRIAL SPACE

2141 Southwest Blvd.

GROVE CITY, OH 43123



2141 Southwest Blvd. > Industrial Space

Located in an established industrial park. Ideal for image conscious tenant with good access to I-71 and I-270.

Building Type:	126,714 +/- SF Distribution Building
Available Space:	29,040 +/- SF
Sublease Rate:	\$7.25/SF FSG
Master Lease Expiration:	August 31, 2019

Contact Us

MICHAEL R. LINDER, SIOR

614.410.5628

COLUMBUS, OH

michael.linder@colliers.com

SHANE E. WOLOSHAN, SIOR

614.410.5624

COLUMBUS, OH

shane.woloshan@colliers.com

JOEL R. YAKOVAC

614.410.5654

COLUMBUS, OH

joel.yakovac@colliers.com

JONATHAN R. SCHUEN

614.437.4495

COLUMBUS, OH

jonathan.schuen@colliers.com

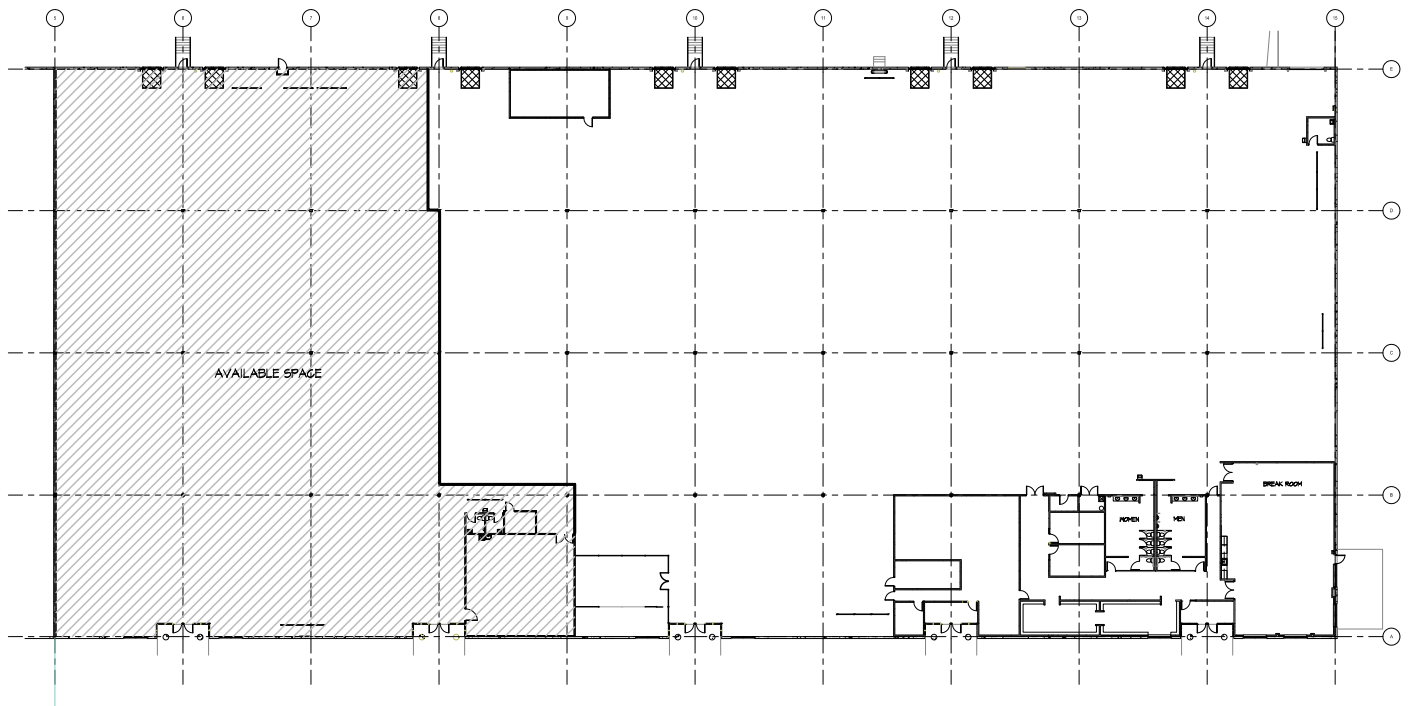
The information contained herein was obtained from sources believed reliable; however, Colliers International makes no guarantees, warranties, or representations as to the completeness or accuracy thereof. The presentation of this property is submitted subject to errors, omissions, change of price or conditions prior to sale or lease, or withdrawal without notice.

**COLLIERS INTERNATIONAL
GREATER COLUMBUS REGION**

Two Miranova Pl, Suite 900
Columbus, OH 43215
www.colliers.com

Building Amenities

- > Air conditioned warehouse
- > 22'-24' clear ceiling height
- > 3 dock doors
- > T5 lighting
- > Wet sprinklered
- > Ideal for image conscious tenant
- > Institutionally owned
- > Easy highway access
- > Zoned: Ind-1 light industrial



MICHAEL R. LINDER, SIOR
614.410.5628
COLUMBUS, OH
michael.linder@colliers.com

SHANE E. WOLOSHAN, SIOR
614.410.5624
COLUMBUS, OH
shane.woloshan@colliers.com

JOEL R. YAKOVAC
614.410.5654
COLUMBUS, OH
joel.yakovac@colliers.com

JONATHAN R. SCHUEN
614.437.4495
COLUMBUS, OH
jonathan.schuen@colliers.com

