



SALE PRICE: \$897,000 | 1.37 ACRES

DEMOGRAPHICS

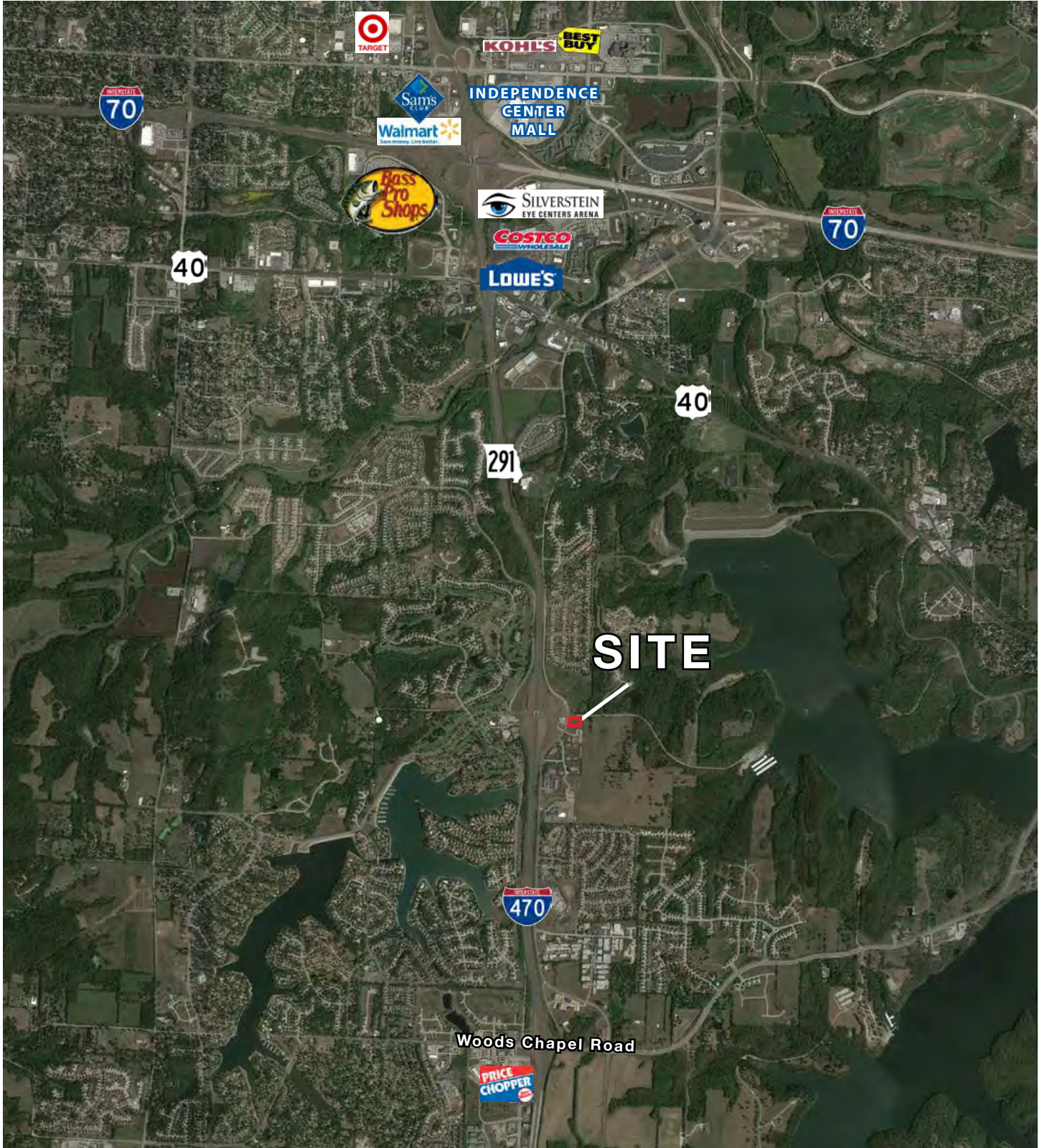
	1 mile	3 miles	5 miles
Estimated Population	5,855	31,542	109,523
Avg. Household Income	\$138,165	\$97,947	\$87,414

- Reduced price pad site in established area
- Located just off I-470 / M-291 Hwy at the Bowlin Rd and Lakewood Blvd exit
- Quick access to I-70, US 40 Hwy. and US 50 Highway

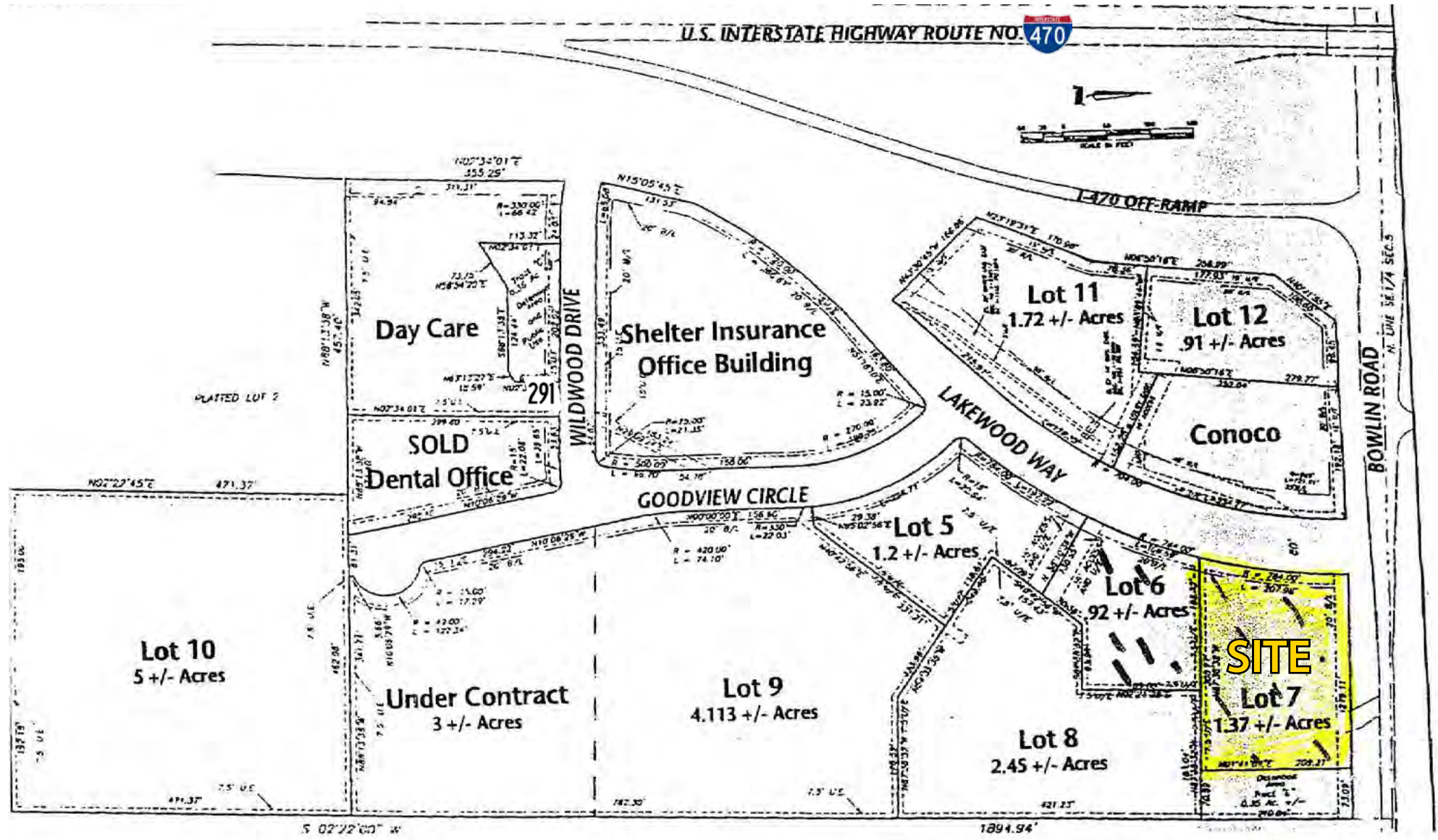
[CLICK HERE TO VIEW MORE LISTING INFORMATION](#)

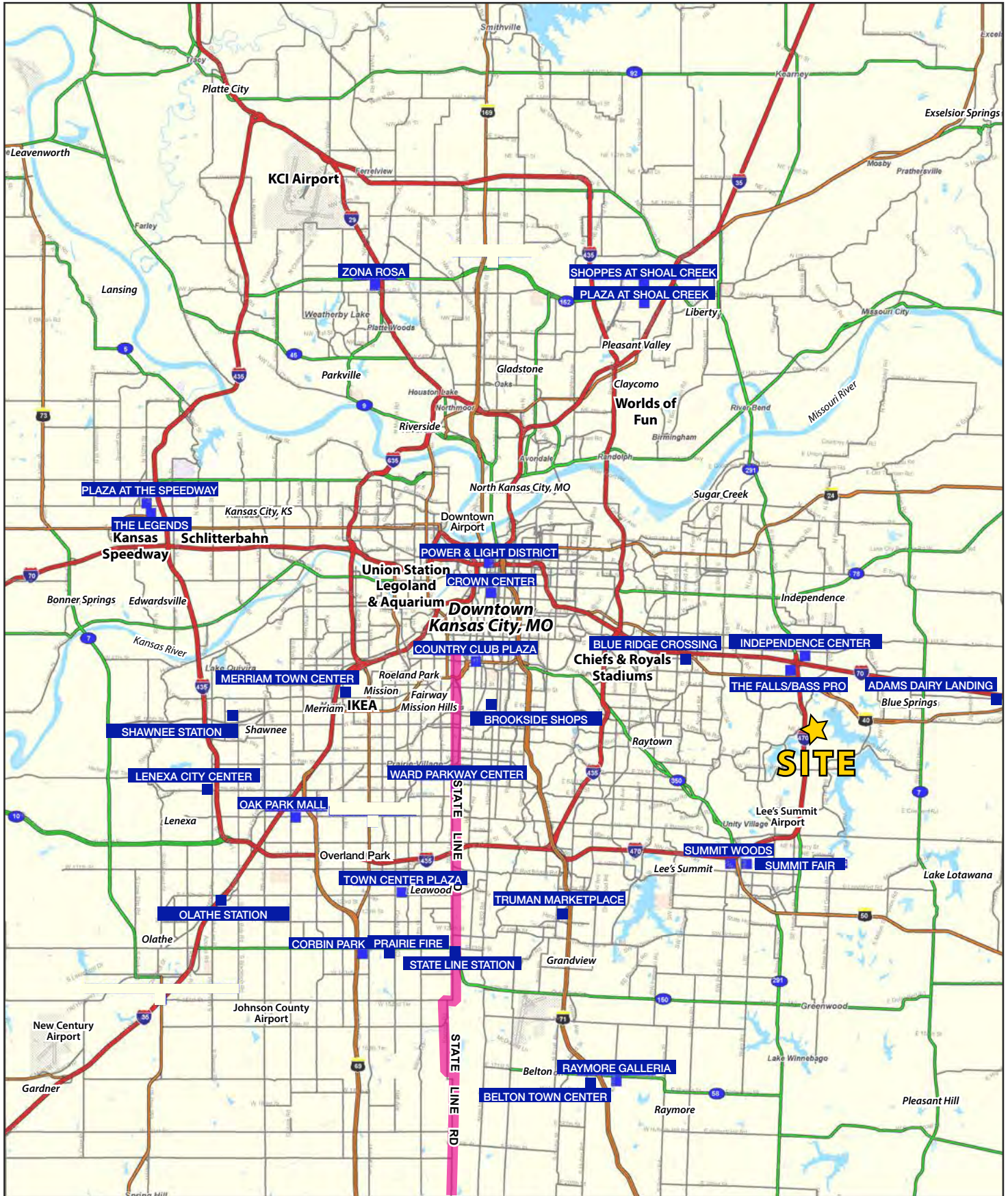
For More Information Contact: *Exclusive Agent*
WILLIAM GLASGOW | 816.412.7394 | wglasgow@blockandco.com

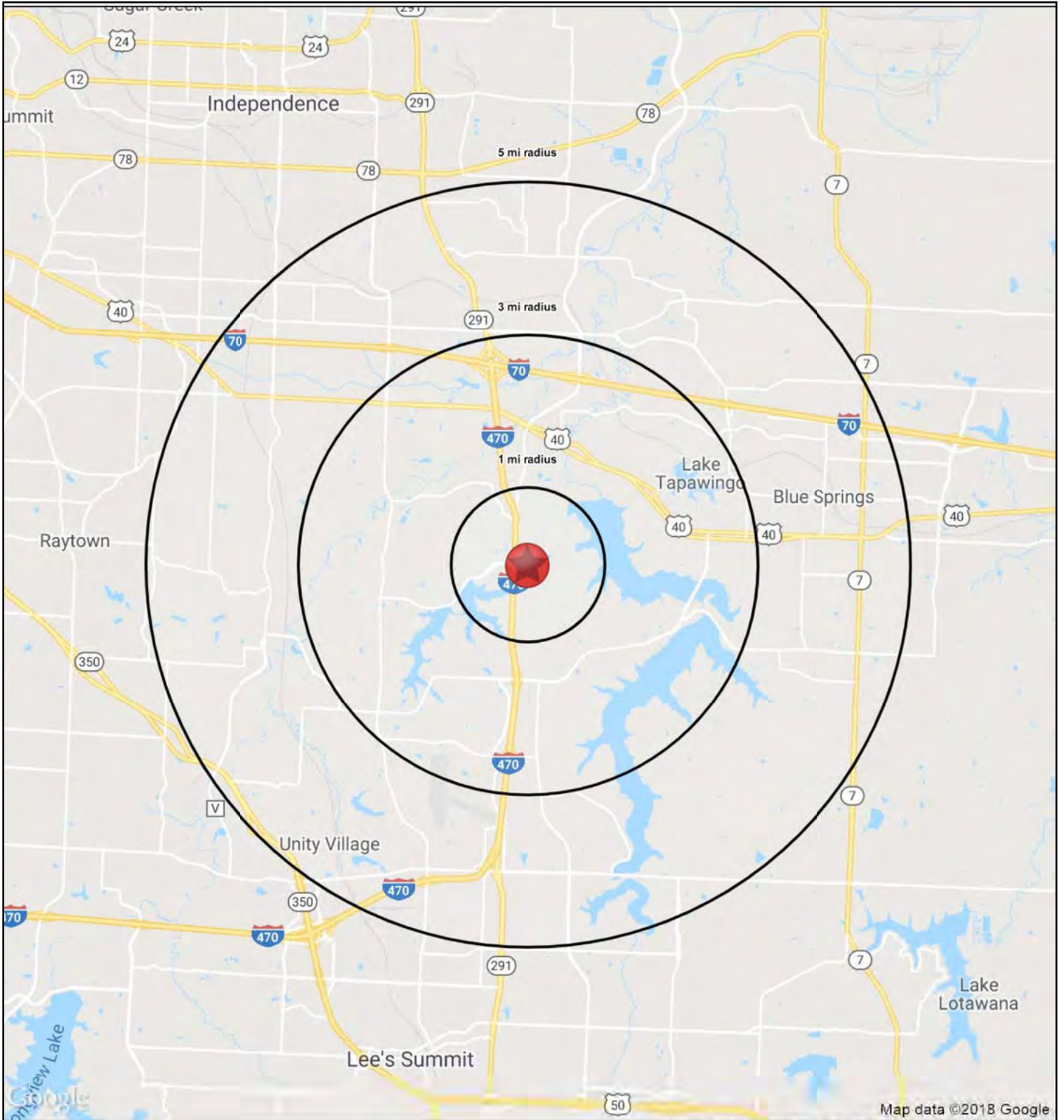
SITE PLAN



SITE PLAN







5051 NE Lakewood Way		1 mi radius	3 mi radius	5 mi radius
Lee's Summit, MO 64064				
POPULATION	2018 Estimated Population	5,855	31,542	109,523
	2023 Projected Population	6,078	32,543	112,672
	2010 Census Population	5,118	29,630	106,160
	2000 Census Population	3,134	22,983	94,885
	Projected Annual Growth 2018 to 2023	0.8%	0.6%	0.6%
	Historical Annual Growth 2000 to 2018	4.8%	2.1%	0.9%
	2018 Median Age	39.1	40.8	39.9
HOUSEHOLDS	2018 Estimated Households	2,256	13,044	45,524
	2023 Projected Households	2,318	13,307	46,259
	2010 Census Households	1,890	11,693	42,146
	2000 Census Households	1,115	8,630	36,400
	Projected Annual Growth 2018 to 2023	0.5%	0.4%	0.3%
	Historical Annual Growth 2000 to 2018	5.7%	2.8%	1.4%
RACE AND ETHNICITY	2018 Estimated White	85.6%	83.9%	83.8%
	2018 Estimated Black or African American	6.1%	9.1%	8.7%
	2018 Estimated Asian or Pacific Islander	5.4%	2.8%	2.2%
	2018 Estimated American Indian or Native Alaskan	0.1%	0.3%	0.4%
	2018 Estimated Other Races	2.7%	3.9%	4.8%
	2018 Estimated Hispanic	3.0%	4.4%	5.6%
INCOME	2018 Estimated Average Household Income	\$138,165	\$97,947	\$87,414
	2018 Estimated Median Household Income	\$116,815	\$83,735	\$71,798
	2018 Estimated Per Capita Income	\$53,244	\$40,577	\$36,384
EDUCATION (AGE 25+)	2018 Estimated Elementary (Grade Level 0 to 8)	0.6%	1.0%	1.5%
	2018 Estimated Some High School (Grade Level 9 to 11)	1.1%	3.0%	4.2%
	2018 Estimated High School Graduate	16.7%	21.7%	26.3%
	2018 Estimated Some College	19.2%	23.8%	25.0%
	2018 Estimated Associates Degree Only	8.5%	8.0%	8.2%
	2018 Estimated Bachelors Degree Only	32.5%	24.4%	22.0%
	2018 Estimated Graduate Degree	21.5%	18.1%	12.9%
BUSINESS	2018 Estimated Total Businesses	249	1,345	4,719
	2018 Estimated Total Employees	2,741	15,875	52,944
	2018 Estimated Employee Population per Business	11.0	11.8	11.2
	2018 Estimated Residential Population per Business	23.5	23.5	23.2