

5820 STONY CREEK ROAD  
YPSILANTI TWP., MICHIGAN

RESIDENTIAL LAND FOR SALE  
141.89 Acres Available



**SIGNATURE  
ASSOCIATES**  
KNOW SIGNATURE | KNOW RESULTS

**GREAT RESIDENTIAL DEVELOPMENT SITE**



## PROPERTY FEATURES

- Unique residential development opportunity of this beautiful scenic 27 hole golf course in Washtenaw County
- 141.89 acres available
- Zoned R-2, Single-Family
- Gas, water, electricity, and sanitary sewer at site
- Quick, easy expressway access via I-94/Huron St. interchange
- Abundant hotels, restaurants, and shops located to the north
- Sale price: \$5,675,000 (\$39,995.77/acre)



For more information, please contact:

**JAY CHAVEY**  
(248) 948 4196  
jchavey@signatureassociates.com

**KEENAN FIELDS**  
(419) 249 6311  
kfields@signatureassociates.com

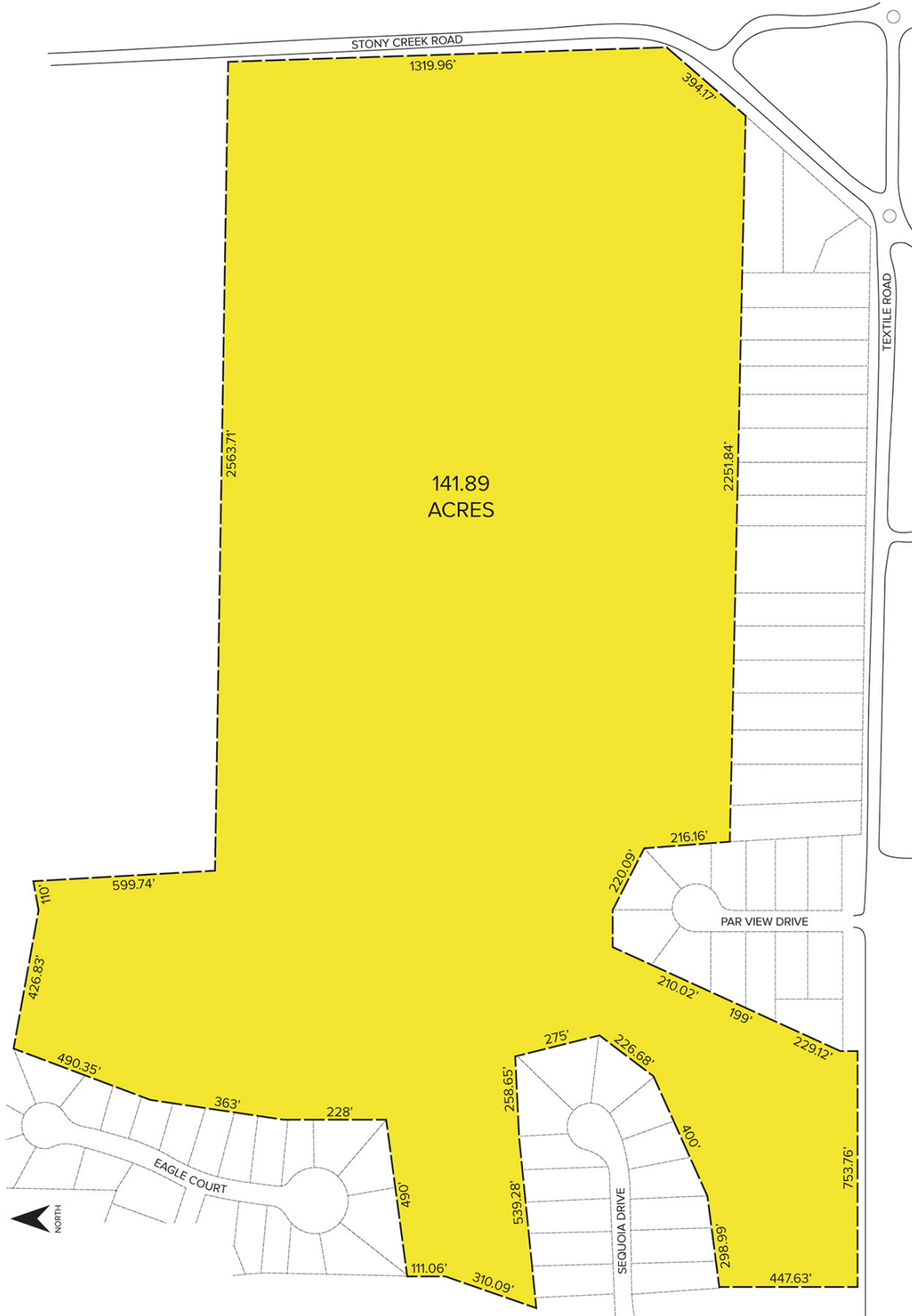
**ROBERT KELEGHAN**  
(419) 249 6323  
rkeleghan@signatureassociates.com

# 5820 Stony Creek – Ypsilanti, Michigan

## Residential Land For Sale

141.89  
Acres  
AVAILABLE

### Site Plan



For more information, please contact:

**JAY CHAVEY**  
(248) 948 4196

**KEENAN FIELDS**  
(419) 249 6311

**ROBERT KELEGHAN**  
(419) 249 6323

**SIGNATURE ASSOCIATES**  
One Towne Square, Suite 1200  
Southfield, MI 48076  
[www.signatureassociates.com](http://www.signatureassociates.com)