

MIDTOWN BUSINESS CENTER

EIGHT MILE ROAD
OAK PARK, MICHIGAN

LAND FOR SALE
27.00 Acres Available

OWNED BY:



SIGNATURE ASSOCIATES
KNOW SIGNATURE | KNOW RESULTS

JOIN BRAND NEW FEDEX DISTRIBUTION CENTER



PROPERTY FEATURES

- 27.00 acres available
- Lt. industrial zoning
- All utilities to the site
- Exceptional redevelopment site
- Build-to-suit available
- Price and taxes TBD



For more information, please contact:

PAUL HOGE
(248) 948 0103
paulhoge@signatureassociates.com

GARY STEPHENS
(248) 948 0104
gstephens@signatureassociates.com

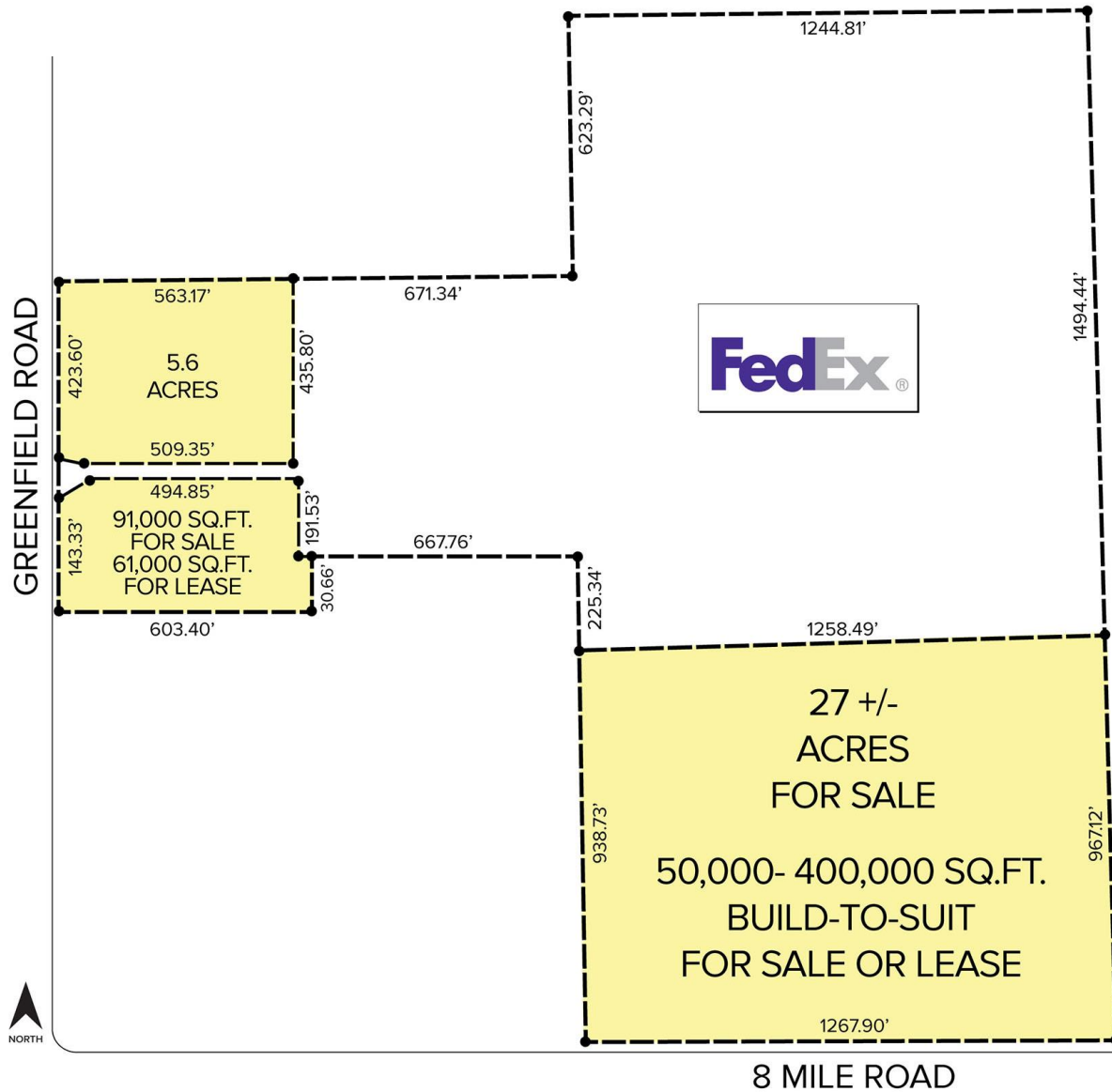
SIGNATURE ASSOCIATES
One Towne Square, Suite 1200
Southfield, MI 48076
www.signatureassociates.com

MIDTOWN BUSINESS CENTER

EIGHT MILE ROAD - OAK PARK, MICHIGAN

27.00
Acres
AVAILABLE

Site Plan



For more information, please contact:

PAUL HOGE
(248) 948 0103
paulhoge@signatureassociates.com

GARY STEPHENS
(248) 948 0104
gstephens@signatureassociates.com

SIGNATURE ASSOCIATES
One Towne Square, Suite 1200
Southfield, MI 48076
www.signatureassociates.com