

7.06 Ac of Industrial Land For Sale (All or Part)



Estrella Crossing Business Park

15660 W Illini St (Lot 12)
3740 & 3790 S 156th Ave (Lots 13 & 14)
Goodyear, Arizona 85338

NAIHorizon

2944 N 44th St, Suite 200, Phoenix, Arizona
+1 602 955 4000
naihorizon.com

NO WARRANTY OR REPRESENTATION, EXPRESS OR IMPLIED, IS MADE AS TO THE ACCURACY OF THE INFORMATION CONTAINED HEREIN, AND THE SAME IS SUBMITTED SUBJECT TO ERRORS, OMISSIONS, CHANGE OF PRICE, RENTAL OR OTHER CONDITIONS, PRIOR SALE, LEASE OR FINANCING, OR WITHDRAWAL WITHOUT NOTICE, AND OF ANY SPECIAL LISTING CONDITIONS IMPOSED BY OUR PRINCIPALS NO WARRANTIES OR REPRESENTATIONS ARE MADE AS TO THE CONDITION OF THE PROPERTY OR ANY HAZARDS CONTAINED THEREIN

For more information:
Mark Wilcke
+1 602 852 3454
mark.wilcke@naihorizon.com

7.06 Ac Industrial Land For Sale (All or Part)

Property & Location Highlights

- Approximately 7.06 Acres total consisting of three (3) lots (12, 13, 14) at Estrella Crossing Business Park
- Utilities available to the property
- Located south of the SWC 156th Ave & Elwood St
- Zoned PAD (Planned Area Development) I-1 (Industrial)
- Foreign trade zone capable
- Surrounded by corporate neighbors
- Located just west of Phoenix Goodyear Airport
- Approximately 3 miles to I-10 freeway
- Possible seller financing
- Combined 3 lots aggressively priced at \$2.95/SF



Lease Rate: Contact Agent

Sale Price: \$907,313 (\$2.95/SF)

Mark Wilcke

+1 602 852 3454

mark.wilcke@naihorizon.com

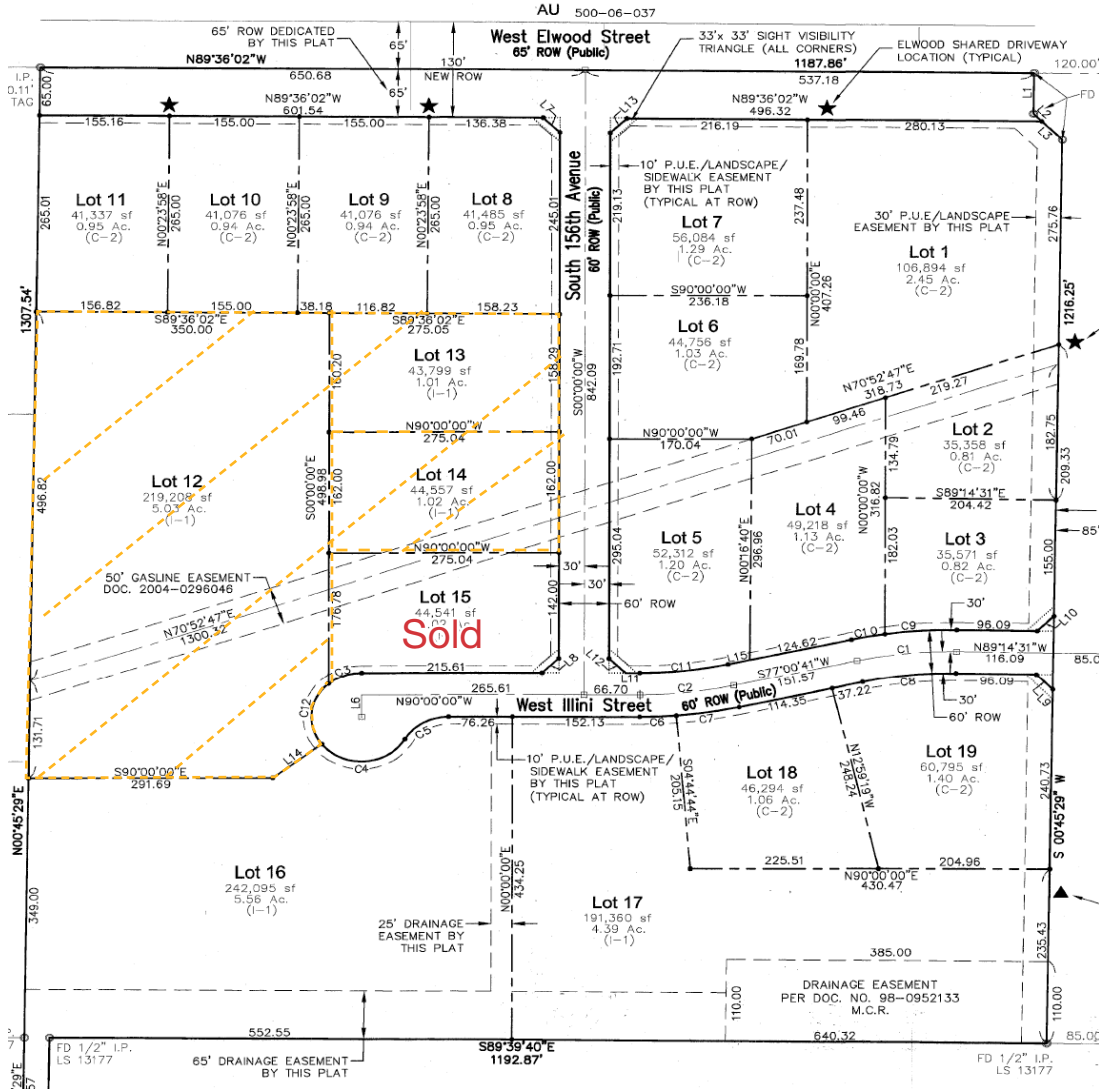
NAIHorizon

7.06 Ac Industrial Land For Sale (All or Part)

Property Plat

Property Description

(All or Part Available)



Address	TPN	Lot #	Acres	SF	Zoning
15660 W Illini St	500-07-247	12	5.03	219,208	I-1 PAD
3740 S 156th Ave	500-07-248	13	1.01	43,799	I-1 PAD
3790 S 156th Ave	500-07-249	14	1.02	44,557	I-1 PAD
TOTAL			7.06	307,564	

Lots can be purchased individually as follows:

Lot 12	\$646,663 or \$2.95/SF
Lot 13	\$175,196 or \$4.00/SF
Lot 14	\$175,196 or \$4.00/SF

Mark Wilcke

+1 602 852 3454

mark.wilcke@naih.com

