

Partnership. Performance.



**OFFICE SPACE FOR LEASE**

## Opportunity

Office building with spacious two-story lobby available for lease, totaling 55,920 square feet. Less than one mile from Duke Regional Hospital. Less than five miles from Duke University Medical Center. Multiple points of ingress and egress. Ample parking and abundant amenities within walking distance. Competitive rental rate of \$17.50/sf, full service.

## Durham Summit IV

**4101 N. Roxboro Street**  
Durham, NC 27704



**Janet Clayton, CCIM**  
**Principal**

919.420.1581

[janet.clayton@avisonyoung.com](mailto:janet.clayton@avisonyoung.com)

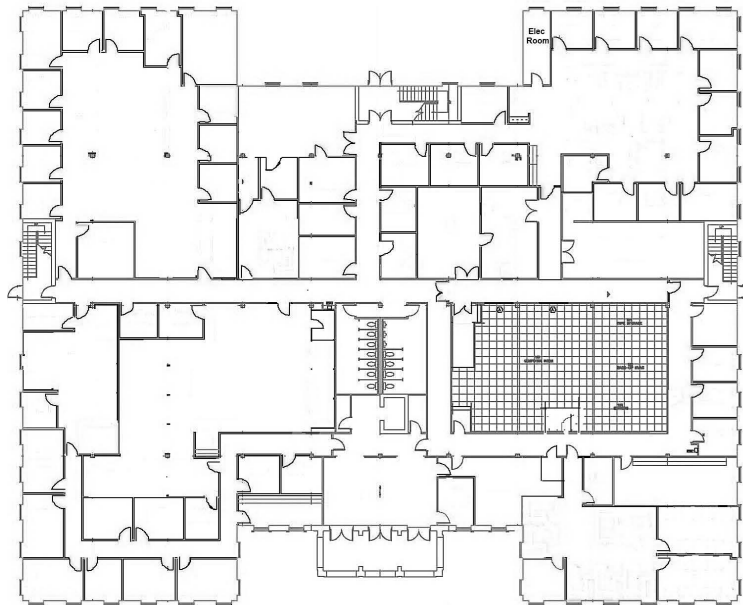


# Durham Summit IV

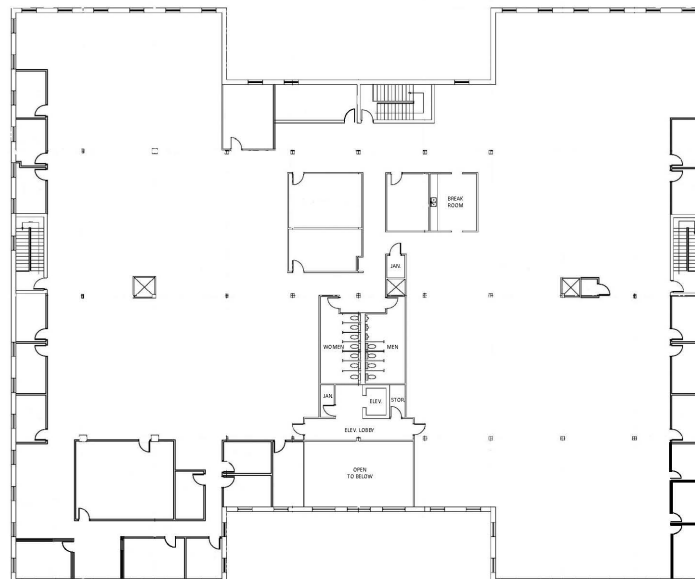
4104 N. Roxboro Street  
Durham, NC 27704

27,960-sf Floor Plates  
(Approximate)

First Floor



Second Floor



**Janet Clayton, CCIM**  
**Principal**  
919.420.1581  
janet.clayton@avisonyoung.com

5440 Wade Park Boulevard, Suite 200 Raleigh, NC 27607 | 919.785.3434 | avisonyoung.com

The information contained herein was obtained from sources believed reliable; however, Avison Young makes no guarantees, warranties, or representations as to the completeness or accuracy thereof. The presentation of this property is submitted subject to errors, omissions, changes of price or conditions prior to sale or lease, or withdrawal without notice.