

# Sanford Industrial Building & Retail Land

700 S French Avenue, Sanford, FL 32771



EQUITY  
INVESTMENT  
SERVICES

## PROPERTY SUMMARY



### PROPERTY HIGHLIGHTS

- 5,000 SF up to 19,000 SF Available for Lease
- Property is currently undergoing major renovations
- Available Space Expected in September 2019
- +/-0.82 Acre Site Available Adjacent to Building Ideal for Retail
- Frontage on S French Ave (US 17-92)
- Close Access to 417 & Orlando Sanford International Airport
- 23,000+ Vehicles Per Day on 17-92

### OFFERING SUMMARY

Lease Rate:	Negotiable
Available SF:	5,000 up to 19,000 SF and +/- 0.82 Acre Retail Site
Building Size:	43,178 SF

DEMOGRAPHICS	1 MILE	3 MILES	5 MILES
Total Households	3,453	17,210	36,810
Total Population	8,579	46,517	97,804
Average HH Income	\$49	\$54	\$66

Rob Keeler  
407.573.0711 x317  
rkeeler@eisre.com



7575 Dr. Phillips Blvd, Ste 390  
Orlando, FL 32819  
www.eisre.com

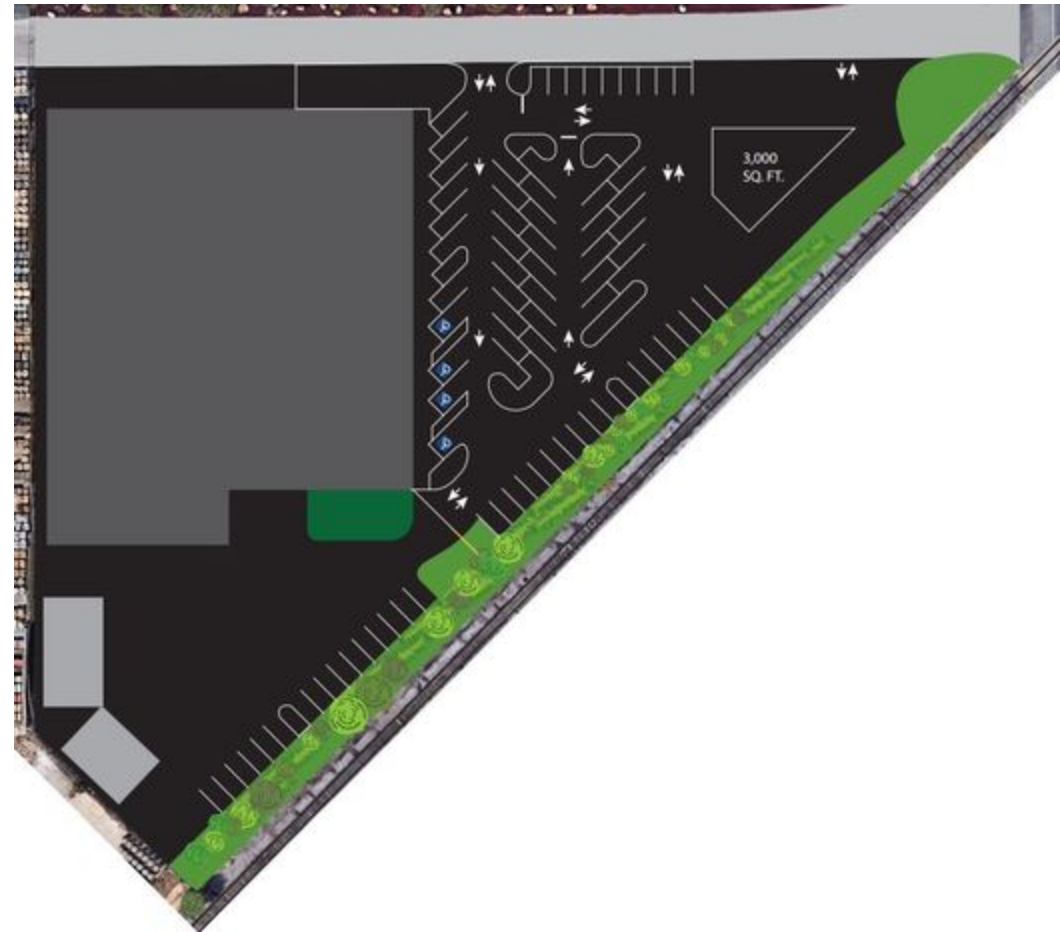
# Sanford Industrial Building & Retail Land

700 S French Avenue, Sanford, FL 32771



EQUITY  
INVESTMENT  
SERVICES

## RENDERINGS & SITE PLAN



Rob Keeler  
407.573.0711 x317  
rkeeler@eisre.com



7575 Dr. Phillips Blvd, Ste 390  
Orlando, FL 32819  
www.eisre.com

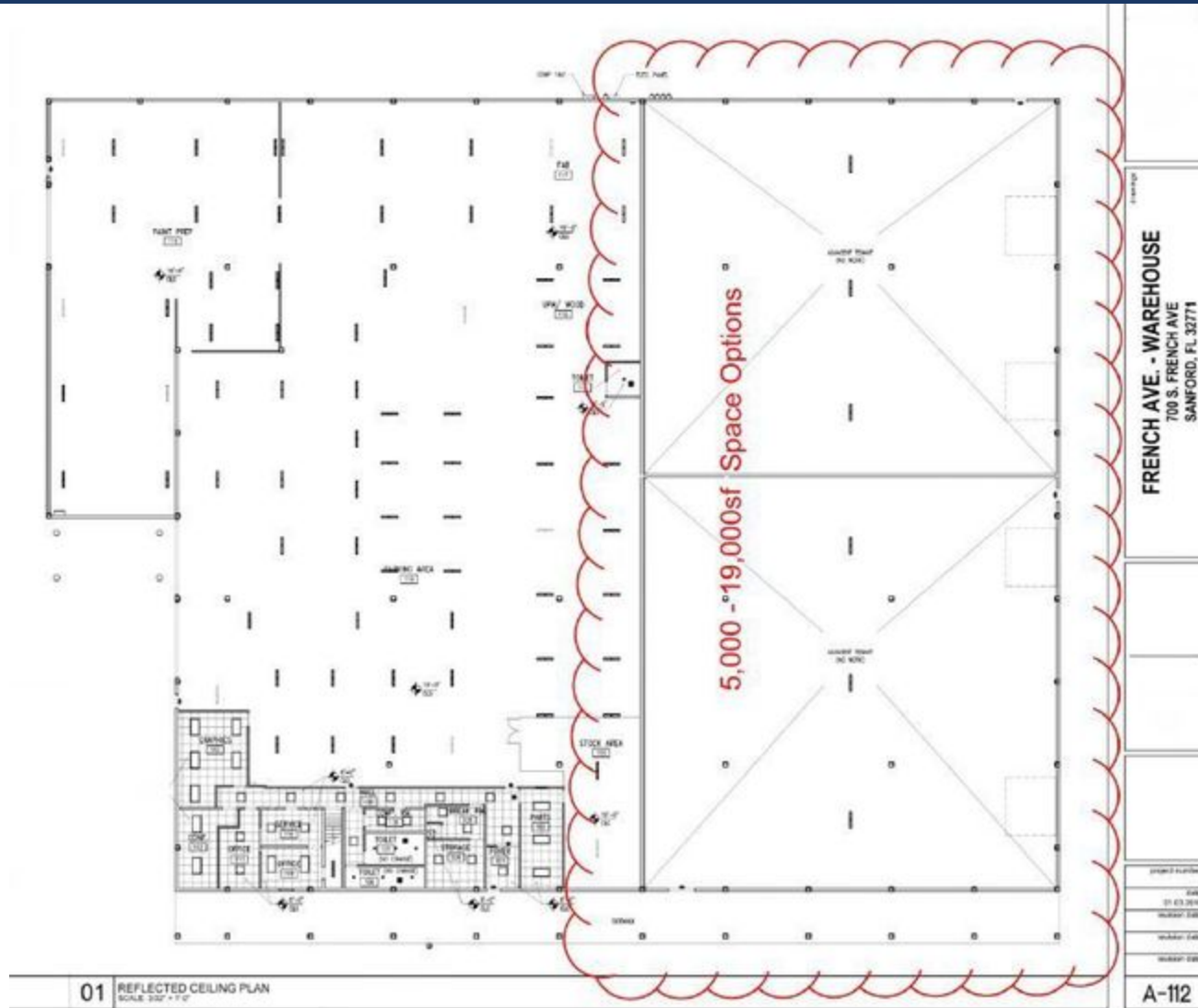
# Sanford Industrial Building & Retail Land

700 S French Avenue, Sanford, FL 32771



EQUITY  
INVESTMENT  
SERVICES

## SITE PLAN



Rob Keeler  
407.573.0711 x317  
rkeeler@eisre.com



7575 Dr. Phillips Blvd, Ste 390  
Orlando, FL 32819  
www.eisre.com

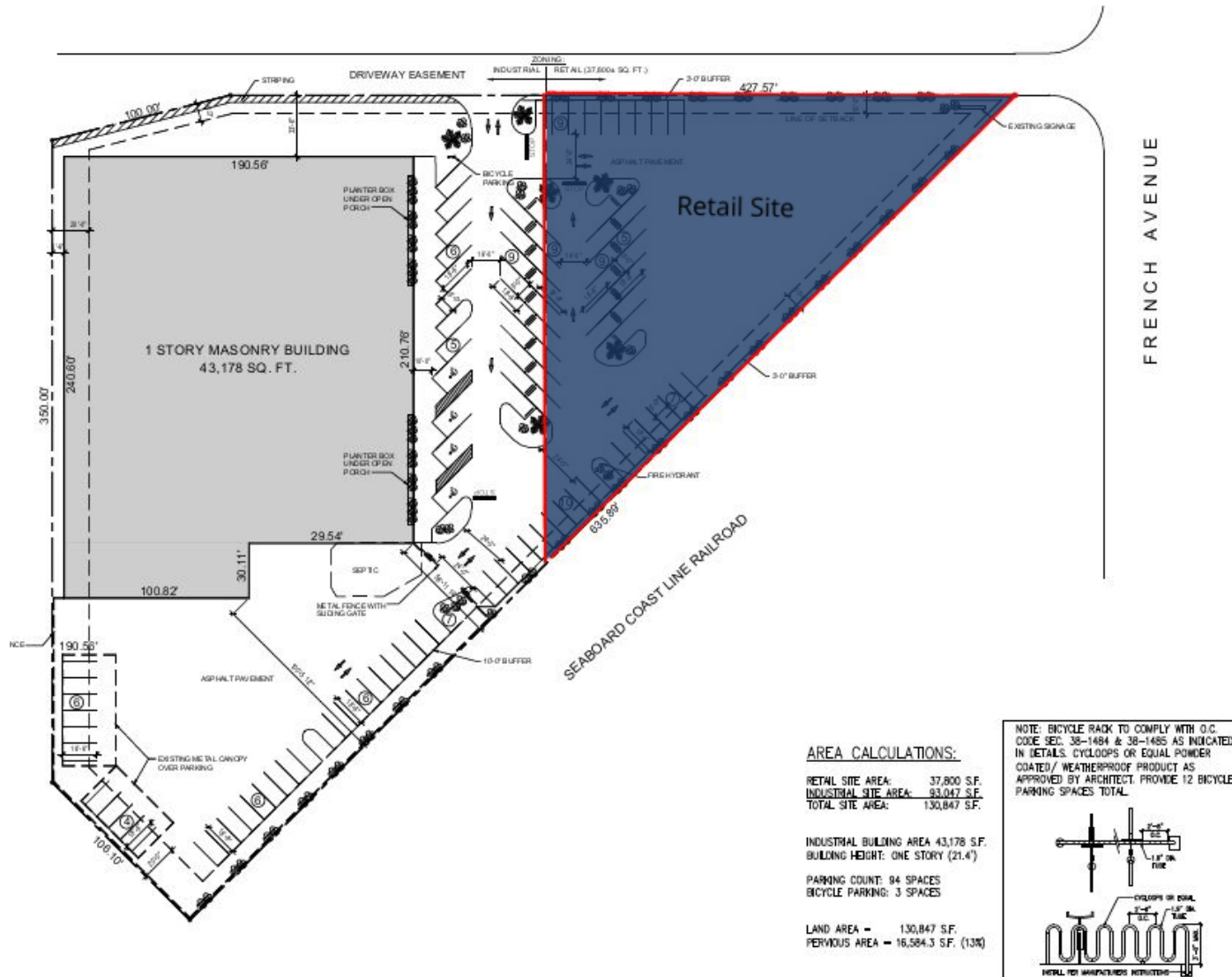
# Sanford Industrial Building & Retail Land

700 S French Avenue, Sanford, FL 32771



EQUITY  
INVESTMENT  
SERVICES

## SITE PLAN



Rob Keeler  
407.573.0711 x317  
rkeeler@eisre.com



7575 Dr. Phillips Blvd, Ste 390  
Orlando, FL 32819  
www.eisre.com

# Sanford Industrial Building & Retail Land

700 S French Avenue, Sanford, FL 32771



EQUITY  
INVESTMENT  
SERVICES

## RETAILER MAP



Rob Keeler  
407.573.0711 x317  
rkeeler@eisre.com



7575 Dr. Phillips Blvd, Ste 390  
Orlando, FL 32819  
www.eisre.com

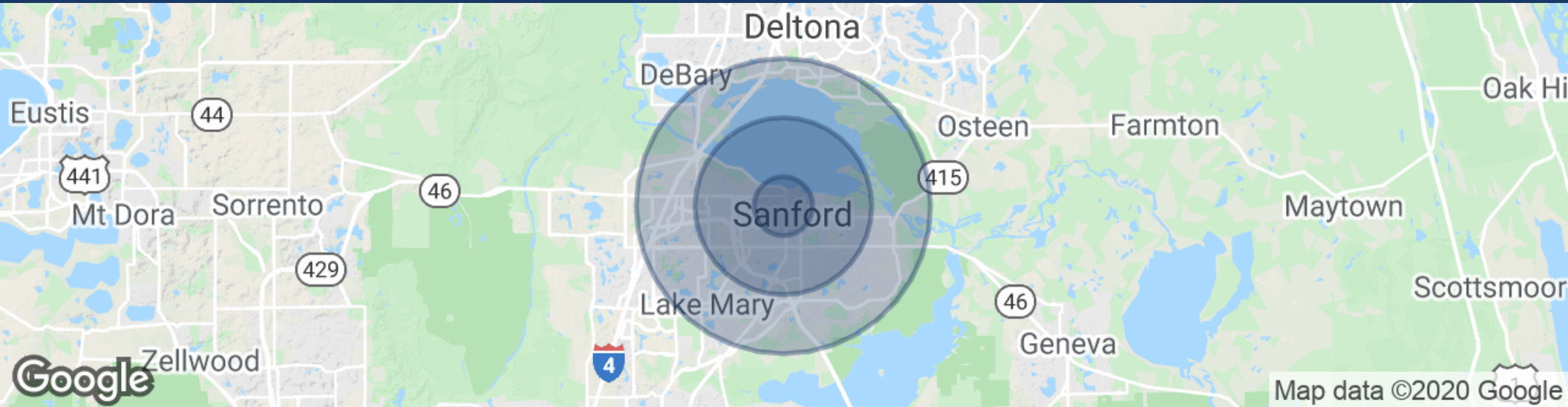
# Sanford Industrial Building & Retail Land

700 S French Avenue, Sanford, FL 32771



EQUITY  
INVESTMENT  
SERVICES

## DEMOGRAPHICS MAP & REPORT



POPULATION	1 MILE	3 MILES	5 MILES
Total population	8,579	46,517	97,804
Median age	33.4	34.0	35.5
Median age (Male)	34.6	33.3	34.8
Median age (Female)	33.7	34.9	36.3
HOUSEHOLDS & INCOME	1 MILE	3 MILES	5 MILES
Total households	3,453	17,210	36,810
# of persons per HH	2.7	2.7	2.7
Average HH income	\$49	\$54	\$66
Average house value	\$215,570	\$219,871	\$237,753

\* Demographic data derived from 2010 US Census

Rob Keeler  
407.573.0711 x317  
rkeeler@eisre.com



7575 Dr. Phillips Blvd, Ste 390  
Orlando, FL 32819  
www.eisre.com