



# 520 Corporate Center Building B

2353 130TH AVE NE, BELLEVUE, WA 98005

## FOR LEASE



For leasing information contact

**TODD GAUTHIER**  
425.450.1118  
todd.gauthier@kidder.com

**JASON BLOOM**  
425.450.1102  
jason.bloom@kidder.com

**15,815 SF Available**  
[www.520CorporateB.com](http://www.520CorporateB.com)

**Kidder Mathews**

This information supplied herein is from sources we deem reliable. It is provided without any representation, warranty, or guarantee, expressed or implied as to its accuracy. Prospective Buyer or Tenant should conduct an independent investigation and verification of all matters deemed to be material, including, but not limited to, statements of income and expenses. Consult your attorney, accountant, or other professional advisor.

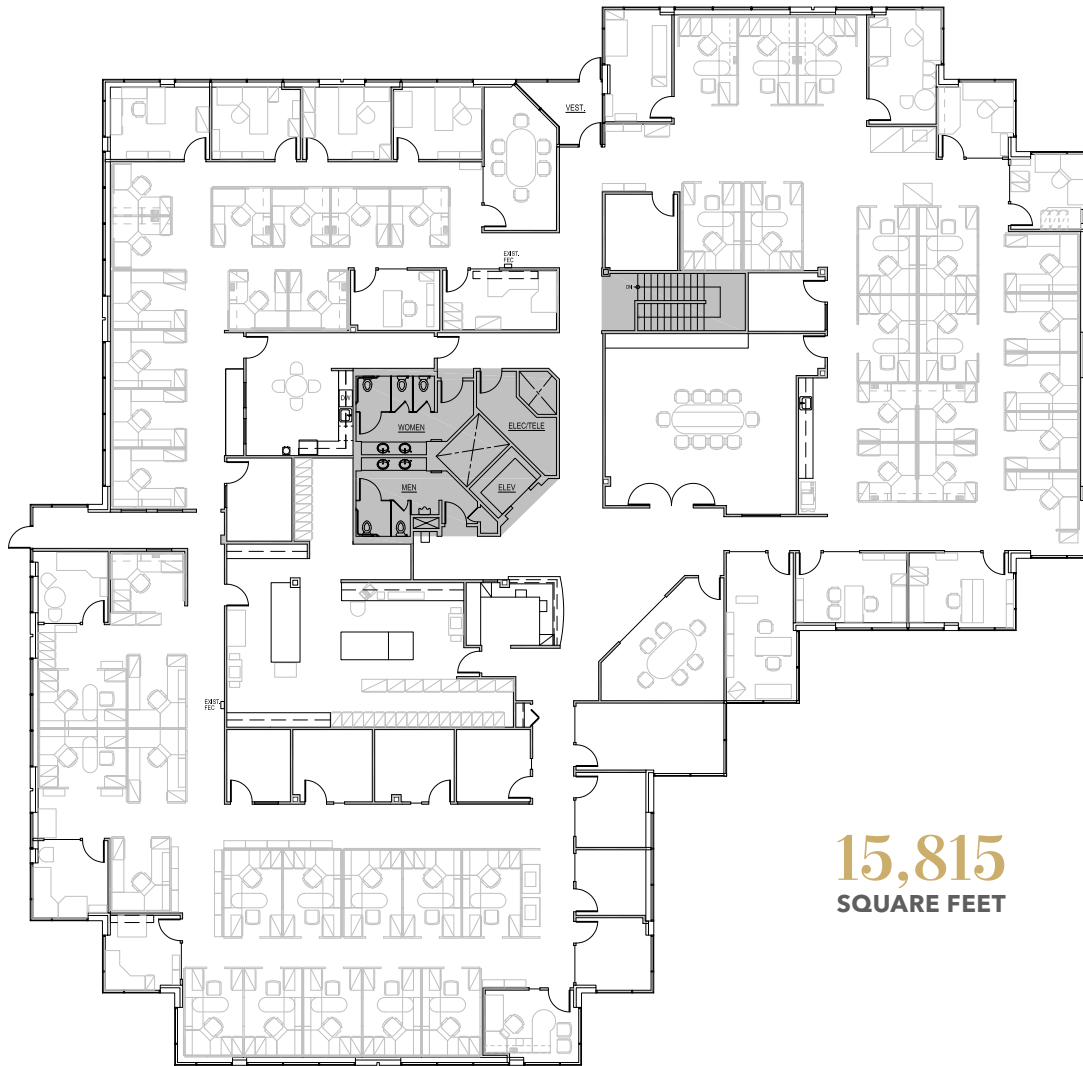
**KIDDER.COM**

**FOR LEASE**

# 520 Corporate Center, Building B

2353 130TH AVE NE, BELLEVUE, WA

## Suite 200



**15,815**  
SQUARE FEET

**ENTIRE** second floor available for lease

**HIGH-IMAGE**, two-story office building

**PARKING** ratio of 3.5 stalls per 1,000 SF

**EXTENSIVE** window lines with natural light

**DIRECT** access to suite via building elevator

**TWO** second floor entrances to the suite

**GOOD MIX** of open area and window line private offices

**DIRECT** access to outdoor patio area

**CLOSE** proximity to Spring District, Light Rail, Bellevue CBD, I-405, SR-520 and Microsoft Campus

**ADDITIONAL** 2,458 SF storage space available

**CALL** listing broker for lease rates

**AVAILABLE** Spring of 2020

[KIDDER.COM](http://KIDDER.COM)

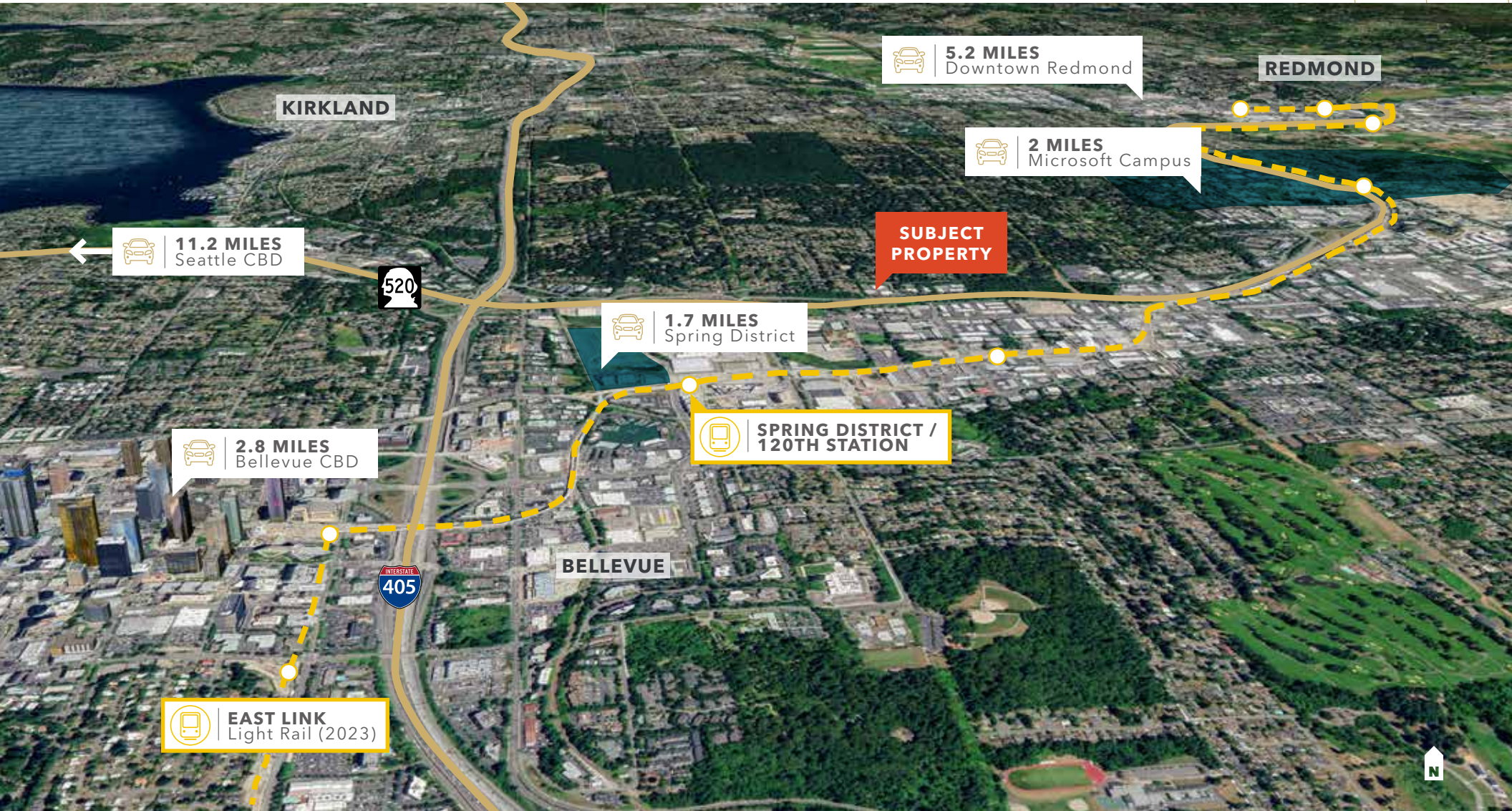
This information supplied herein is from sources we deem reliable. It is provided without any representation, warranty, or guarantee, expressed or implied as to its accuracy. Prospective Buyer or Tenant should conduct an independent investigation and verification of all matters deemed to be material, including, but not limited to, statements of income and expenses. Consult your attorney, accountant, or other professional advisor.

**km** Kidder Mathews

FOR LEASE

# 520 Corporate Center, Building B

2353 130TH AVE NE, BELLEVUE, WA



KIDDER.COM

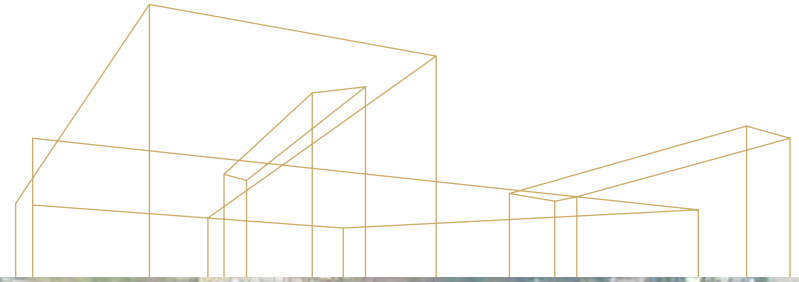
This information supplied herein is from sources we deem reliable. It is provided without any representation, warranty, or guarantee, expressed or implied as to its accuracy. Prospective Buyer or Tenant should conduct an independent investigation and verification of all matters deemed to be material, including, but not limited to, statements of income and expenses. Consult your attorney, accountant, or other professional advisor.

**km** Kidder Mathews



# 520 Corporate Center Building B

2353 130TH AVE NE, BELLEVUE, WA 98005



For leasing  
information  
contact

**TODD GAUTHIER**

Executive Vice President  
Shareholder  
425.450.1118  
[todd.gauthier@kidder.com](mailto:todd.gauthier@kidder.com)

**JASON BLOOM**

Executive Vice President  
Shareholder  
425.450.1102  
[jason.bloom@kidder.com](mailto:jason.bloom@kidder.com)

[www.520CorporateB.com](http://www.520CorporateB.com)

