

For Sale

4650 Route 9
Howell, New Jersey
±4.6 Acres Zoned HD-1
Former "Moon Motel" Site

**Flat, Level Site w/All Utilities
All Structures Have Been Demolished**



SPECIFICATIONS

Lot Size:	± 4.6 Acres
Block/Lot:	Block 78.10; Lot 26
Zoning:	HD-1. Covers Variety of Uses. Most Commercial Uses Permitted in Zoning.
Lot Coverage:	70% Maximum Impervious Coverage
Traffic Count:	Over 37,000+
Utilities:	All Utilities Available on Route 9
Taxes:	\$ 50,984.00 (2017)
Sale Price:	\$ 3,600,000.00

LOGISTIC REALTY
COMMERCIAL REAL ESTATE SERVICES

Bill Hettler
732.738.8880 office
whettler@logisticrealty.com

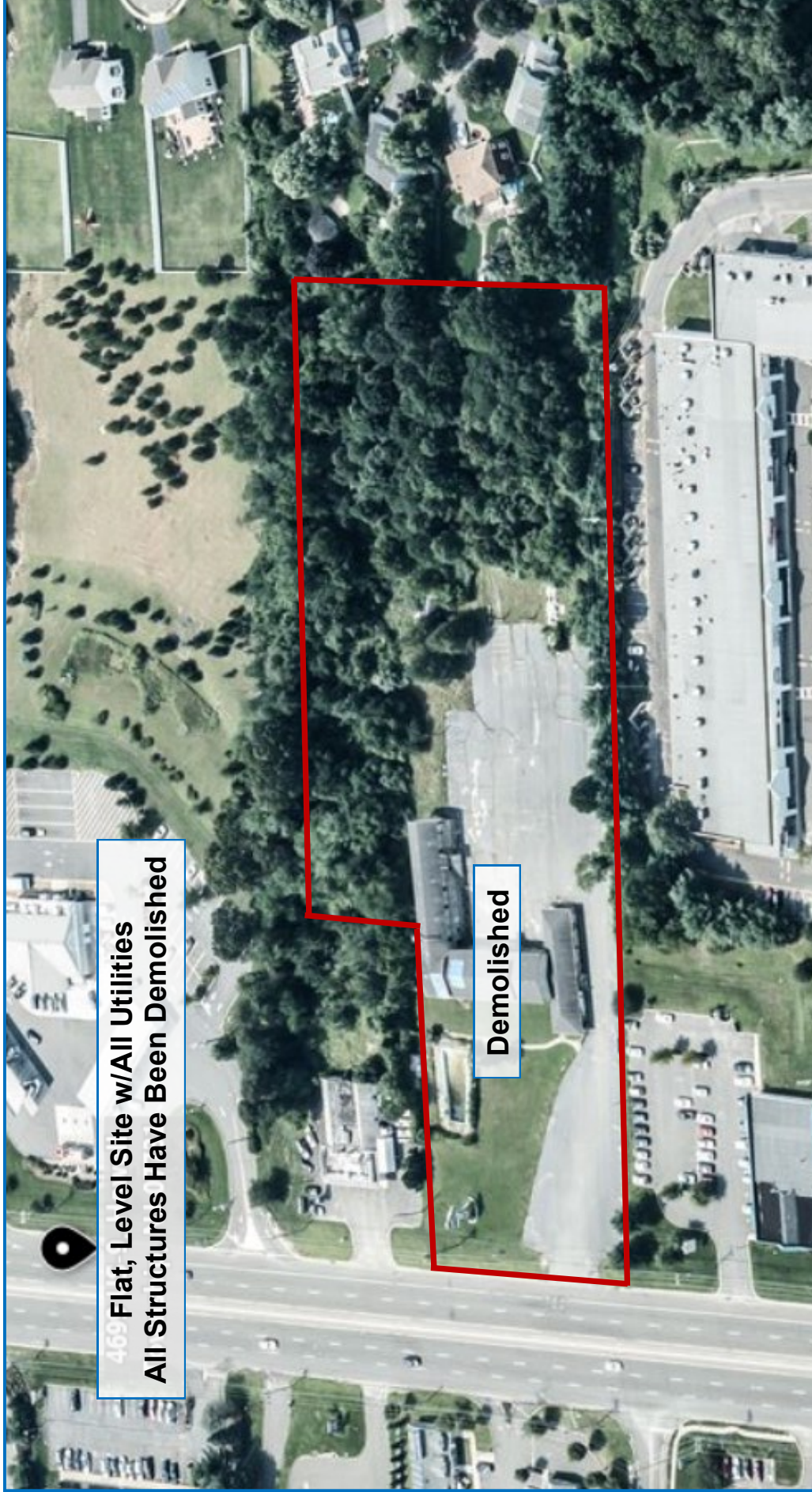
For Sale

4650 Route 9

Howell, New Jersey

±4.6 Acres Zoned HD-1

Former "Moon Motel" Site



4650
Flat, Level Site w/All Utilities
All Structures Have Been Demolished

Demolished

LOGISTIC REALTY
COMMERCIAL REAL ESTATE SERVICES

Bill Hettler
732.738.8880 office
whettler@logisticreality.com