

ST. GABRIEL, LOUISIANA

**377.60 ACRES | VACANT LAND**

LA-HWY 75, SAINT GABRIEL, LA 70776

**SAINT GABRIEL, LA**

---

**\$16,992,000**

- \$45,000 Per Acre
- 377.60 Total Acres Available
- 1,432 Ft. Deep Draft River Frontage
- Rail Available to Site
- Easy Access to LA-Highway 30 and Interstate 10

**EXCLUSIVELY MARKETED BY:**

---

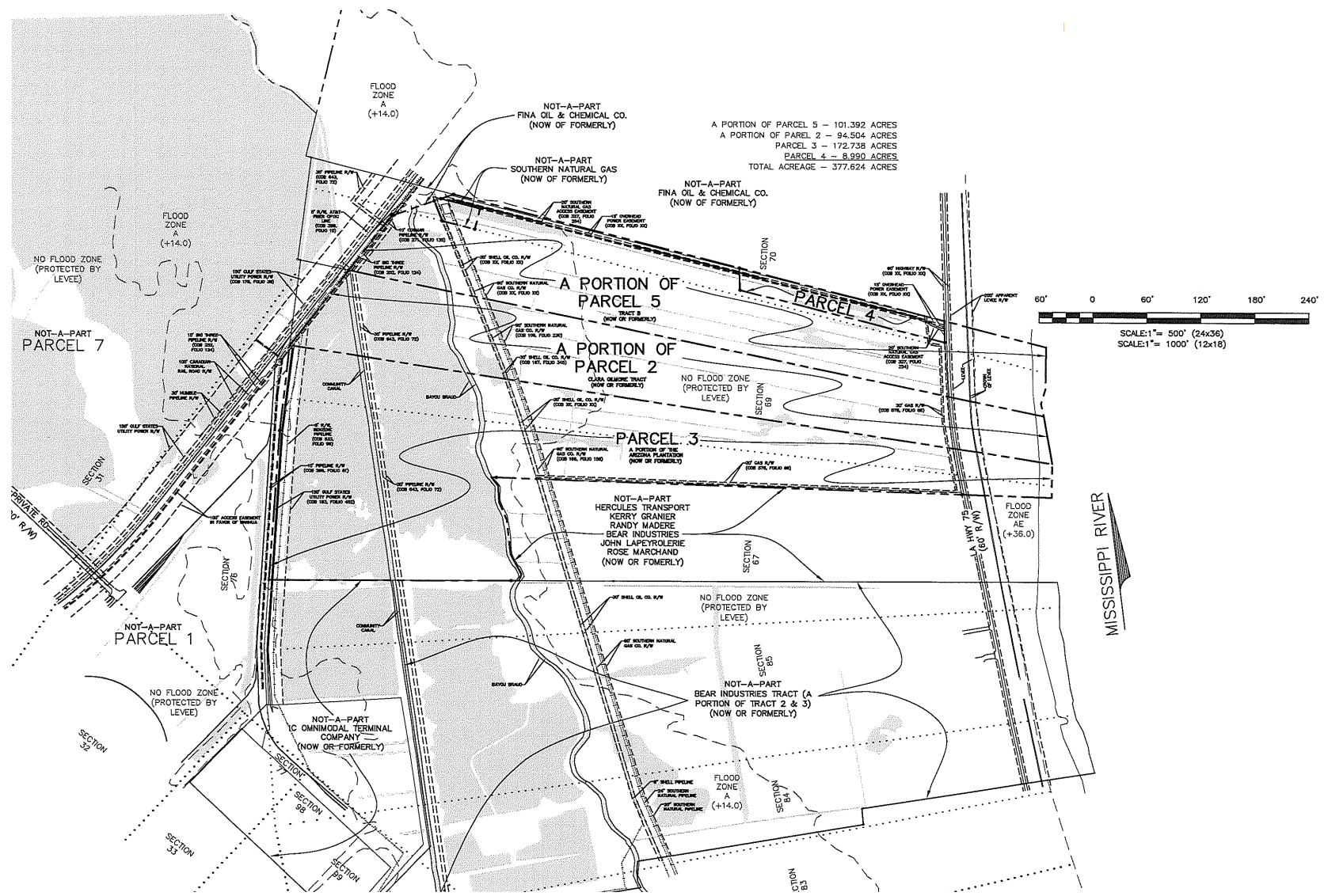
**BOB KIRBY**

225.413.6162 | [Bob@sr-cre.com](mailto:Bob@sr-cre.com)

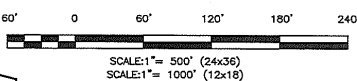
# LOCATION MAP

LA-HWY 75, SAINT GABRIEL, LA 70776

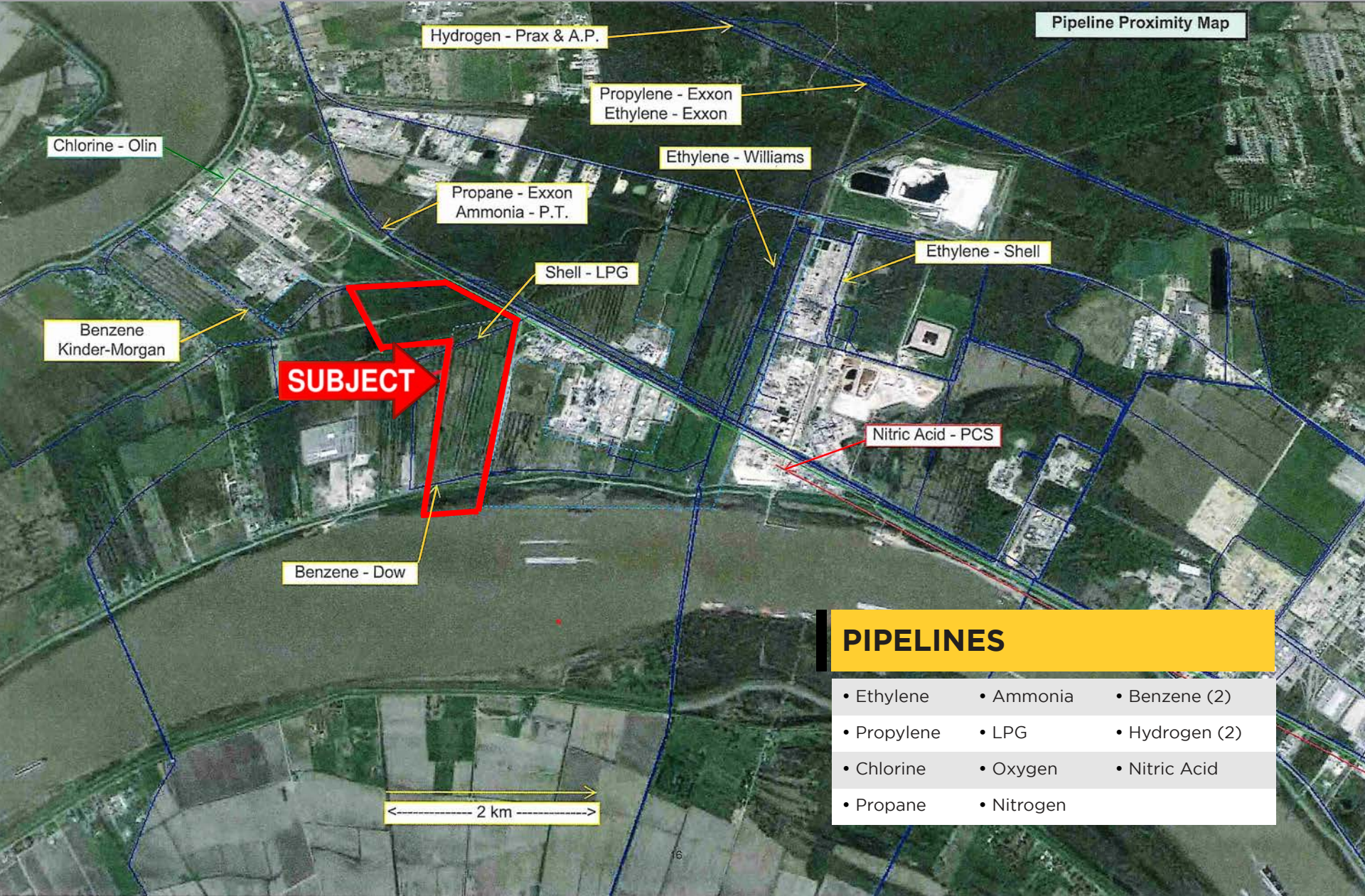




A PORTION OF PARCEL 5 - 101.392 ACRES  
A PORTION OF PARCEL 2 - 94.504 ACRES  
PARCEL 3 - 172.738 ACRES  
PARCEL 4 - 8.990 ACRES  
TOTAL ACREAGE - 377.624 ACRES



LA-HWY 75, SAINT GABRIEL, LA 70776



Pipeline Proximity Map

Hydrogen - Prax & A.P.

Propylene - Exxon  
Ethylene - Exxon

Chlorine - Olin

Ethylene - Williams

Propane - Exxon  
Ammonia - P.T.

Ethylene - Shell

Shell - LPG

Benzene  
Kinder-Morgan

**SUBJECT**

Nitric Acid - PCS

Benzene - Dow

## PIPELINES

- Ethylene
- Ammonia
- Benzene (2)
- Propylene
- LPG
- Hydrogen (2)
- Chlorine
- Oxygen
- Nitric Acid
- Propane
- Nitrogen

2 km

LA-HWY 75, SAINT GABRIEL, LA 70776



## COMPANIES

- BASF
- Carville Energy
- Crossstex Fractionation
- Huntsman
- Kinder Morgan
- Methanex
- Mexichem
- Momentive
- OLIN
- OXY-Geismar
- PCS
- Praxair
- Shell
- Syngenta
- Total Styrene
- Westlake
- Williams

For more information, please contact:

**BOB KIRBY**

**MOBILE:** +1 225 413 6162

**OFFICE:** +1 225 766 0000

**EMAIL:** BOB@SR-CRE.COM



**SAURAGE ROTENBERG**  
COMMERCIAL REAL ESTATE

SAURAGE ROTENBERG COMMERCIAL REAL ESTATE, LLC

5135 BLUEBONNET BLVD  
BATON ROUGE, LA 70809

TEL +1 225 766 0000

WEB SAURAGEROTENBERG.COM

FAX +1 225 766 2229

The information contained herein has either been given to us by property owners or is from sources deemed reliable and is believed to be correct, it is not in any way warranted or guaranteed by Saurage Rotenberg Commercial Real Estate. This information is submitted subject to errors, omissions, changes in price, rental or other conditions, withdrawal without notice, and to any special listing conditions imposed by the principals. Licensed in Louisiana.

