



**CUSHMAN &
WAKEFIELD**

FOR LEASE

CAPITAL CORPORATE CENTER

3320 & 3330 DATA DRIVE & 10680 WHITE ROCK RD
RANCHO CORDOVA, CA



**5 BUILDING COMPLEX
ON THE CORNER OF WHITE
ROCK RD & DATA DRIVE**

BUILDING HIGHLIGHTS

- Move in ready suites with immediate availability
- Multiple buildings allow for easy expansion or downsizing capabilities
- Multiple Suites from ±1,658 RSF
- Abundant Free Parking
- Easy Access to Highway 50 from Zinfandel Drive
- On-site Deli at 3320 Data Drive
- Mature Landscaping provides plenty of shade and outdoor seating, plus soothing water features

LEASING STRENGTHS

- Economic lease rates in a quality project
- Sophisticated ownership with over 500,000 SF in surrounding corridor
- Professionally managed by KCM Property Management

LEASE TERMS

LEASE RATES	\$1.65 - \$1.75/RSF Full Service Gross
TENANT IMPROVEMENTS	Negotiable on a suite by suite basis
PARKING	Free, 4/1000 SF

RON THOMAS, SIOR
Executive Director
+1 916 288 4801
ron.thomas@cushwake.com
LIC #01193241

CHRIS SCHWARZE
Executive Director
+1 916 288 4803
chris.schwarze@cushwake.com
LIC #01291261

ZACH MOSLE, CCIM
Senior Associate
+1 916 329 1543
zach.mosle@cushwake.com
LIC #01924595

400 Capitol Mall, Suite 1800
Sacramento, California 95814
main +1 916 288 4800
cushmanwakefield.com



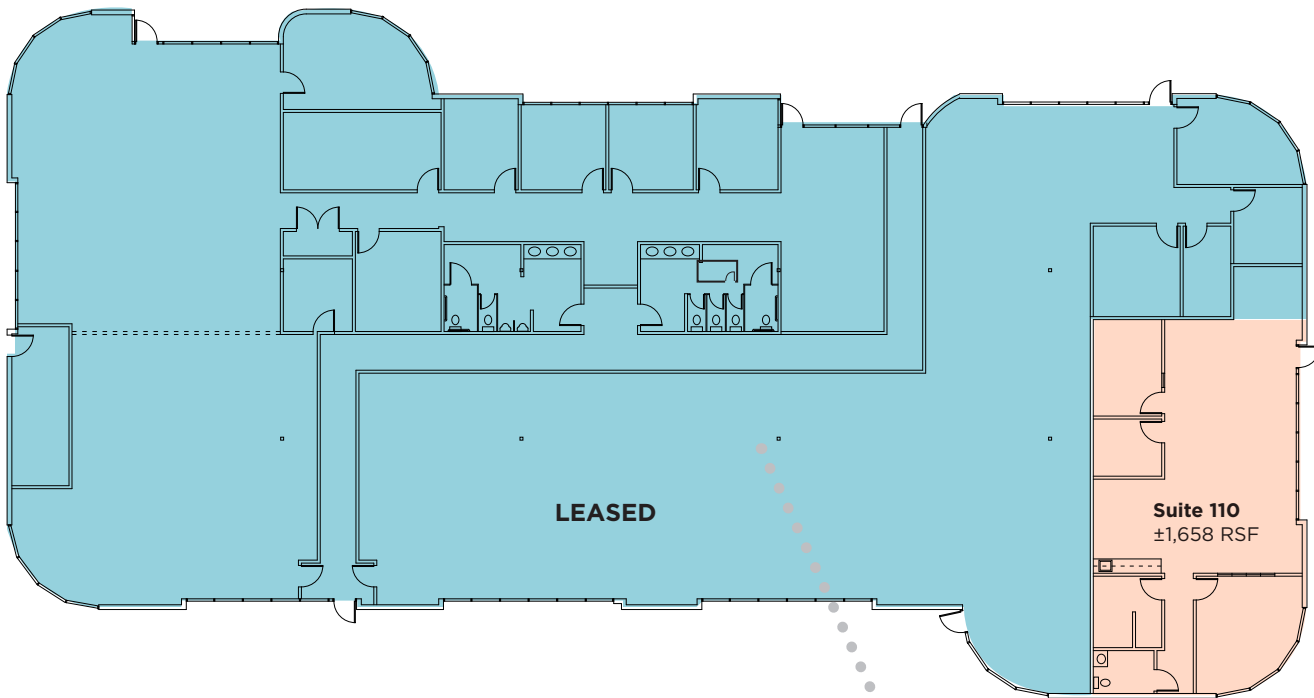
**CUSHMAN &
WAKEFIELD**

FOR LEASE

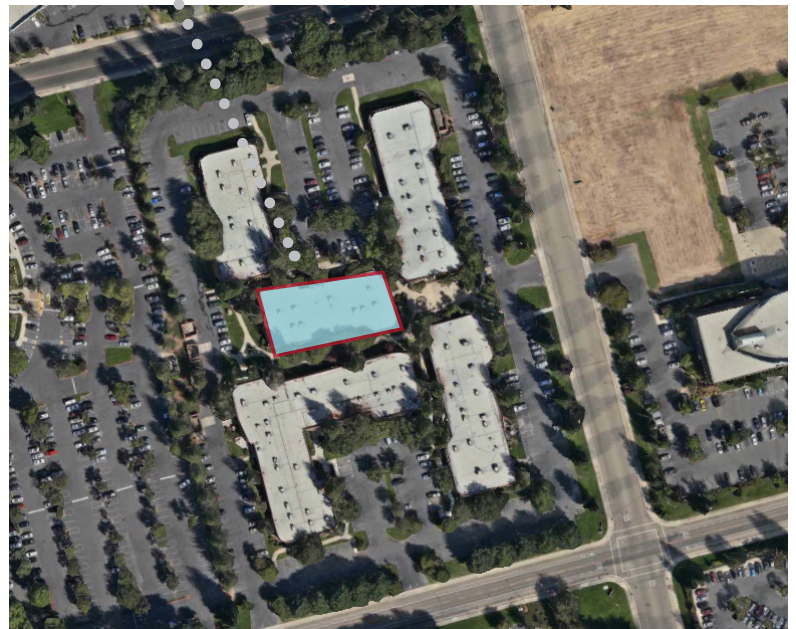
CAPITAL CORPORATE CENTER

3320 & 3330 DATA DRIVE & 10680 WHITE ROCK RD
RANCHO CORDOVA, CA

10680 WHITE ROCK ROAD



10680 WHITE ROCK SUITE 110 ±1,658 rsf

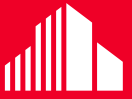


RON THOMAS, SIOR
Executive Director
+1 916 288 4801
ron.thomas@cushwake.com
LIC #01193241

CHRIS SCHWARZE
Executive Director
+1 916 288 4803
chris.schwarze@cushwake.com
LIC #01291261

ZACH MOSLE, CCIM
Senior Associate
+1 916 329 1543
zach.mosle@cushwake.com
LIC #01924595

400 Capitol Mall, Suite 1800
Sacramento, California 95814
main +1 916 288 4800
cushmanwakefield.com

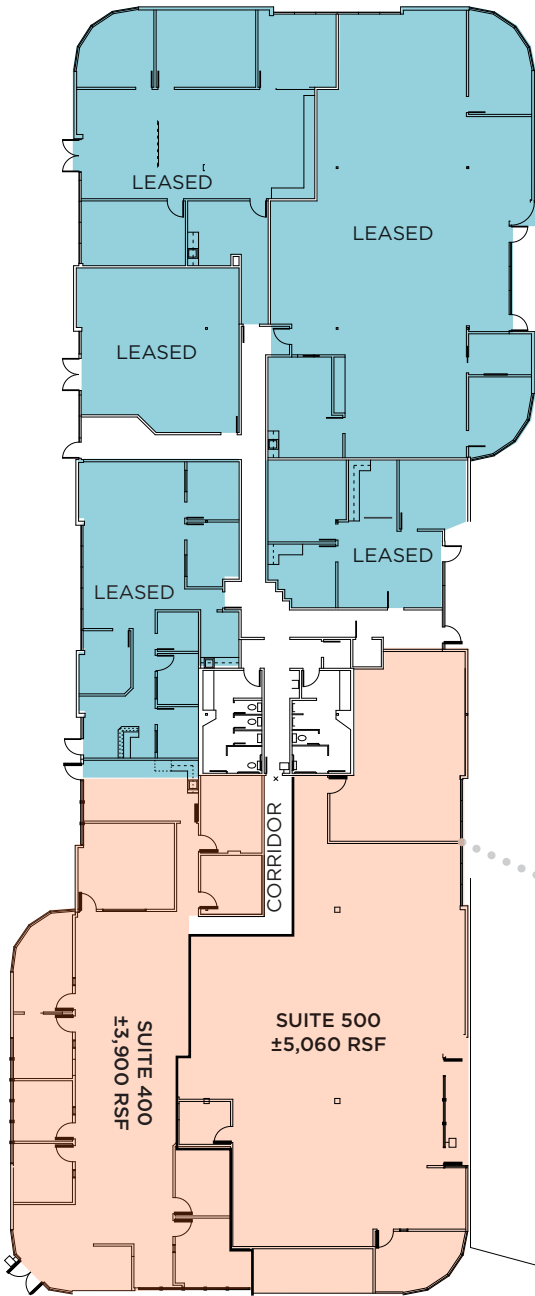


**CUSHMAN &
WAKEFIELD**

FOR LEASE

CAPITAL CORPORATE CENTER

3320 & 3330 DATA DRIVE & 10680 WHITE ROCK RD
RANCHO CORDOVA, CA



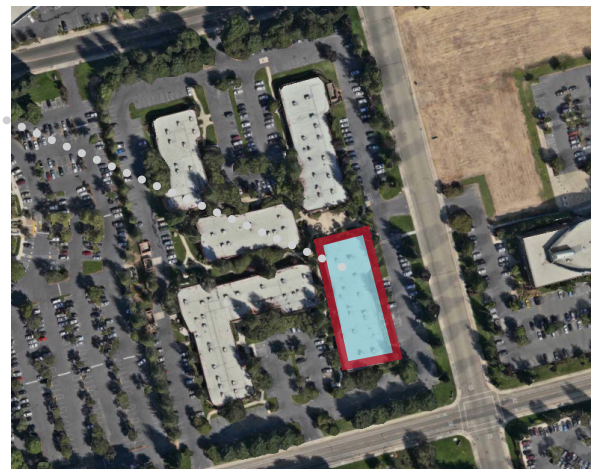
3320 DATA DRIVE

3320 DATA ±8,960 rsf Available

SUITE 400 ±3,900 rsf Available*

SUITE 500 ±5,060 rsf Available*

*Can be combined for a total of ±8,960 SF



RON THOMAS, SIOR
Executive Director
+1 916 288 4801
ron.thomas@cushwake.com
LIC #01193241

CHRIS SCHWARZE
Executive Director
+1 916 288 4803
chris.schwarze@cushwake.com
LIC #01291261

ZACH MOSLE, CCIM
Senior Associate
+1 916 329 1543
zach.mosle@cushwake.com
LIC #01924595

400 Capitol Mall, Suite 1800
Sacramento, California 95814
main +1 916 288 4800
cushmanwakefield.com



**CUSHMAN &
WAKEFIELD**

FOR LEASE

CAPITAL CORPORATE CENTER

3320 & 3330 DATA DRIVE & 10680 WHITE ROCK RD
RANCHO CORDOVA, CA

GALLERY



RON THOMAS, SIOR
Executive Director
+1 916 288 4801
ron.thomas@cushwake.com
LIC #01193241

CHRIS SCHWARZE
Executive Director
+1 916 288 4803
chris.schwarze@cushwake.com
LIC #01291261

ZACH MOSLE, CCIM
Senior Associate
+1 916 329 1543
zach.mosle@cushwake.com
LIC #01924595

400 Capitol Mall, Suite 1800
Sacramento, California 95814
main +1 916 288 4800
cushmanwakefield.com



**CUSHMAN &
WAKEFIELD**

FOR LEASE

CAPITAL CORPORATE CENTER

3320 & 3330 DATA DRIVE & 10680 WHITE ROCK RD
RANCHO CORDOVA, CA

AERIAL

ZINFANDEL SQUARE SHOPPING CENTER

TARGET	KOHL'S
PET'S MART	RED ROOF INN
HOOTERS	GROCERY OUTLET
PANDA EXPRESS	ROSS
GOLDEN 1 CREDIT UNION	JAMBA JUICE

SHOPPING CENTER AT 3101 ZINFANDEL DR.

SALA THAI
SOHO SUSHI
BANK OF AMERICA

BDX AT CAPITAL VILLAGE

STARBUCKS
WINGSTOP
CHILI'S
NOODLES & COMPANY
THE HABIT BURGER GRILL

LOCATION

BDX AT CAPITAL VILLAGE

PANERA BREAD
LOWES
SUBWAY
RUBIO'S COASTAL GRILL
POKE CUBE
ANYTIME FITNESS
MIMOSA HOUSE

HOTELS

1	EXTENDED STAY
2	BEST WESTERN PLUS
3	COURTYARD

STORE

4	CVS
---	-----

MEDICAL

5	UC DAVIS MEDICAL GROUP RANCHO CORDOVA
---	---------------------------------------

RON THOMAS, SIOR
Executive Director
+1 916 288 4801
ron.thomas@cushwake.com
LIC #01193241

CHRIS SCHWARZE
Executive Director
+1 916 288 4803
chris.schwarze@cushwake.com
LIC #01291261

ZACH MOSLE, CCIM
Senior Associate
+1 916 329 1543
zach.mosle@cushwake.com
LIC #01924595

400 Capitol Mall, Suite 1800
Sacramento, California 95814
main +1 916 288 4800
cushmanwakefield.com