

FOR SALE OR LEASE

CENTER PLAZA

BUILD-TO-SUIT WAREHOUSE SPACE

CENTER DRIVE & STEILACOOM DUPONT HIGHWAY
DUPONT, WASHINGTON 98327



PROPERTY INFORMATION

- + Located on Center Drive, just off Steilacoom-DuPont Hwy and 1 mile from Interstate 5
- + Easy freeway access – 15 minutes from downtown Tacoma and Olympia
- + Home to: Distribution Centers for Amazon, FedEx, Dania, IKEA and Pier 1 Imports
- + Immediate access to Joint Base Lewis-McChord (JBLM) makes it ideal for military related companies



CONTACT US

MONTE DECKER, CCIM

First Vice President
+1 253 596 0041
monte.decker@cbre.com

CHRIS COWLES

Associate
+1 253 596 0048
chris.cowles@cbre.com

AVAILABLE SPACE

BLDG	WAREHOUSE (±RSF)	OFFICE	DOORS (LOADING)
5	34,300	BTS	±8 DH ±14 GL
6	PENDING		

www.cbre.us/tacoma



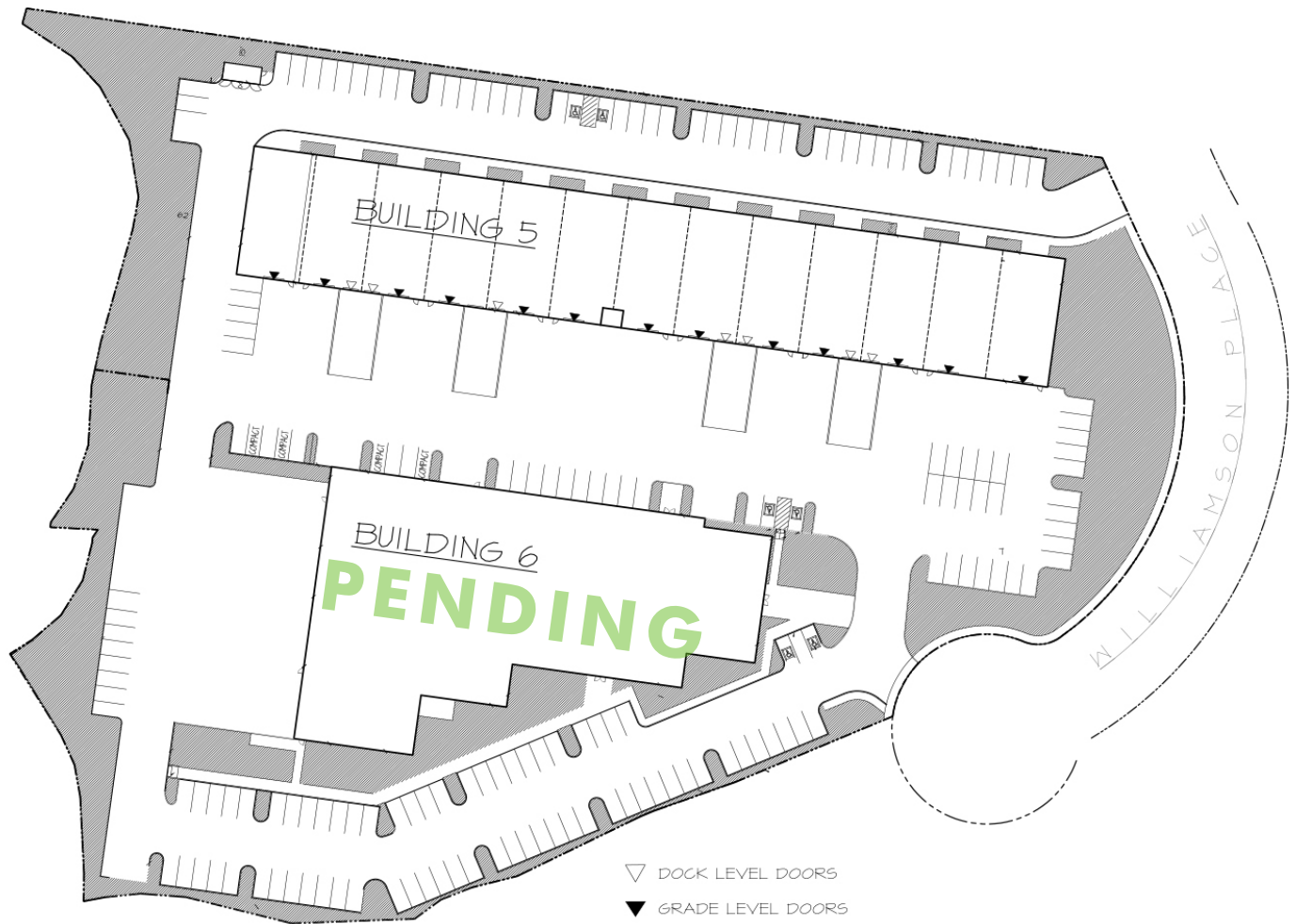
CBRE

FOR SALE OR LEASE CENTER PLAZA

BUILD-TO-SUIT
WAREHOUSE SPACE
CENTER DRIVE & STEILACOOM DUPONT
HIGHWAY DUPONT, WA 98327



SITE PLAN



 **SITE PLAN**
SCALE: 1" = 30'-0"



CONTACT US

MONTE DECKER, CCIM

First Vice President
+1 253 596 0041
monte.decker@cbre.com

CHRIS COWLES

Associate
+1 253 596 0048
chris.cowles@cbre.com

www.cbre.us/tacoma



CBRE

FOR SALE OR LEASE CENTER PLAZA

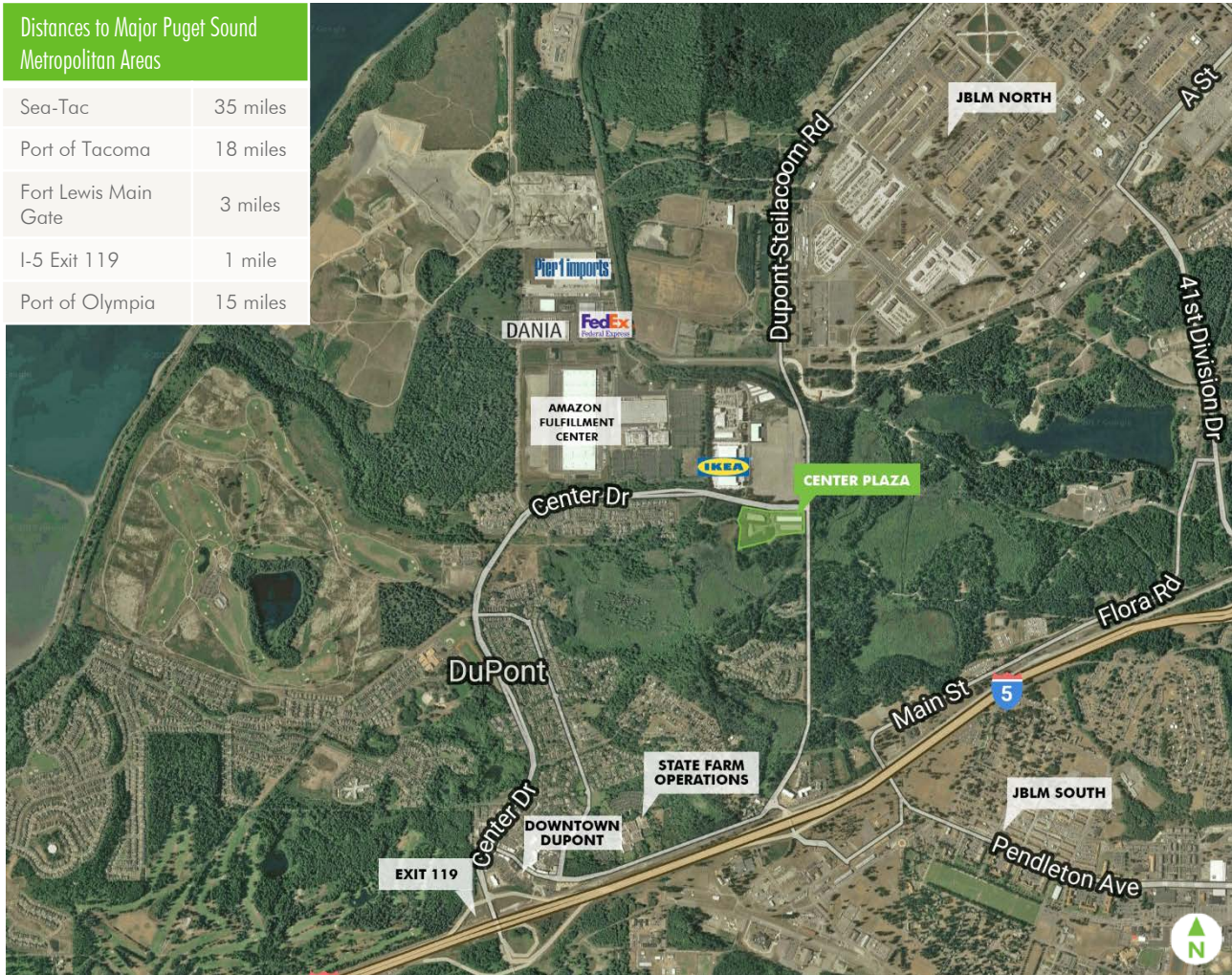
**BUILD-TO-SUIT
WAREHOUSE SPACE
CENTER DRIVE & STEILACOOM DUPONT
HIGHWAY DUPONT, WA 98327**



LOCATION OVERVIEW

Distances to Major Puget Sound Metropolitan Areas

Sea-Tac	35 miles
Port of Tacoma	18 miles
Fort Lewis Main Gate	3 miles
I-5 Exit 119	1 mile
Port of Olympia	15 miles



CONTACT US

MONTE DECKER, CCIM

First Vice President
+1 253 596 0041
monte.decker@cbre.com

CHRIS COWLES

Associate
+1 253 596 0048
chris.cowles@cbre.com

© 2017 CBRE, Inc. This information has been obtained from sources believed reliable. We have not verified it and make no guarantee, warranty or representation about it. Any projections, opinions, assumptions or estimates used are for example only and do not represent the current or future performance of the property. You and your advisors should conduct a careful, independent investigation of the property to determine to your satisfaction the suitability of the property for your needs. Photos herein are the property of their respective owners and use of these images without the express written consent of the owner is prohibited. CBRE and the CBRE logo are service marks of CBRE, Inc. and/or its affiliated or related companies in the United States and other countries. All other marks displayed on this document are the property of their respective owners. nlh 07/05/17

www.cbre.us/tacoma



CBRE