



139

WEST 14TH STREET

Between 6th & 7th Avenues

SIGNIFICANT PRICE DROP
RESTAURANT READY SPACE ON
THE VIADUCT TO MEATPACKING,
WEST VILLAGE, & CHELSEA

DETAILS:

Ground Level: **2,150 SF** | Basement: **1,200 SF** | Possible Garden: **500 SF** | Frontage: **22'**
Ceiling Height: **11'** | Term: **10-15 Yrs** | Possession: **Arranged** | Price: ~~\$22,000~~ **\$19,750/Month**

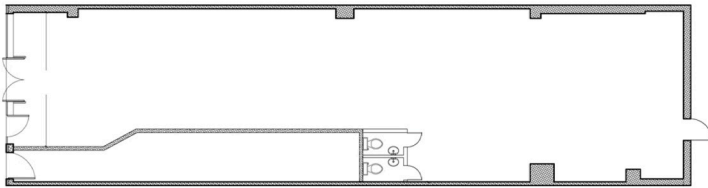
SPACE FEATURES:

- Perfect for restaurant or any use
- Venting, grease trap, gas, and walk-in are all there
- HVAC for both the ground and lower level
- Column free space with interior access to basement
- Garden seating possible
- 14th Street is the viaduct to The Meatpacking District, The West Village, and Chelsea
- Heavily trafficked, major two-way street, busy 24/7, and close to all transportation
- Currently Chelsea Bagel & Cafe
- Please use absolute discretion and do not discuss anything inside the store

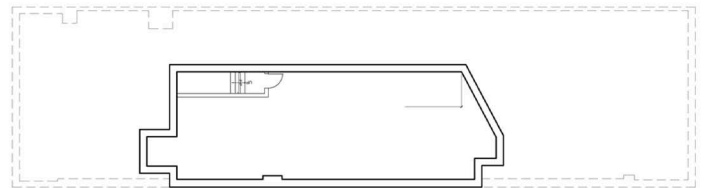
NEIGHBORS INCLUDE:

- WeWork
- Chama Mama
- Westside Market
- Bareburger
- Good Stuff Diner
- Gemini 14
- Duane Reade
- Vitamin Shoppe
- Pratt Institute

GROUND LEVEL



BASEMENT



PLEASE CONTACT:

Steve Rappaport | 646.673.8750 | steve@sinvin.com