

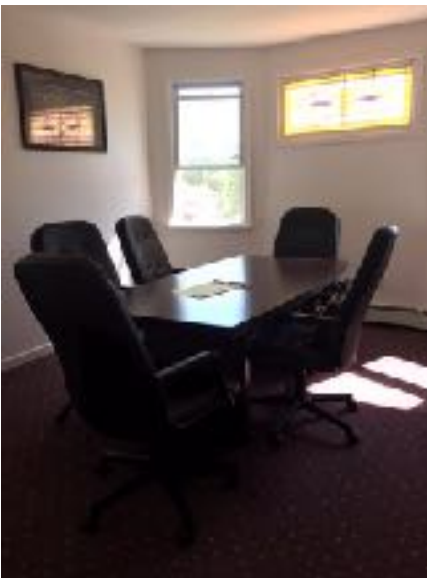
# Commercial Property For Sale

28 Marshall Hill Rd, West Milford, NJ 07480

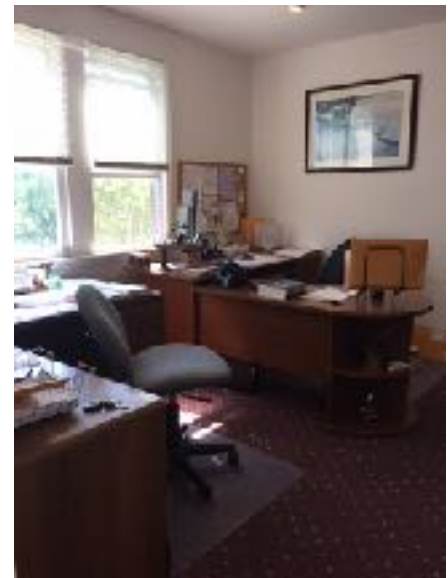


BEAUTIFUL CORNER LOT PROFESSIONAL PROPERTY IN THE HEART OF WEST MILFORD! LISTING PRICE: \$450,000 TAXES: \$5,890

---



- LARGE PROPERTY WITH 2 SEPARATE OFFICES AND ENTRANCES.
- RENOVATED IN 2004. 1ST FLOOR OFFERS A WAITING ROOM LEADING INTO A CONFERENCE ROOM, TWO SEPARATE OFFICES, AND A FULL BATH.
- 2ND FLOOR OFFERS CENTRAL AC, SKYLIGHTS, HALF BATH WITH TWO SMALLER OFFICE SPACES.
- CURRENT LAW BUSINESS CAN ALSO BE FOR SALE WITH THE PROPERTY FOR \$600,000. THIS BUSINESS IS A MUST SEE!!!
- RETAIL ACROSS THE STREET WITH SEVERAL BUSINESSES.
- GSMLS: 3388296



THIS PROPERTY IS A MUST SEE!! CONTACT ME TODAY!

IZABELA PASEK  
SALES-ASSOCIATE  
CENTURY 21 JR GOLD TEAM REALTY  
352 LANZA AVE  
GARFIELD, NJ 07026  
OFFICE: 973-772-9454  
**CELL: 201-936-6531**  
EMAIL: IZABELAPASEK@HOTMAIL.COM