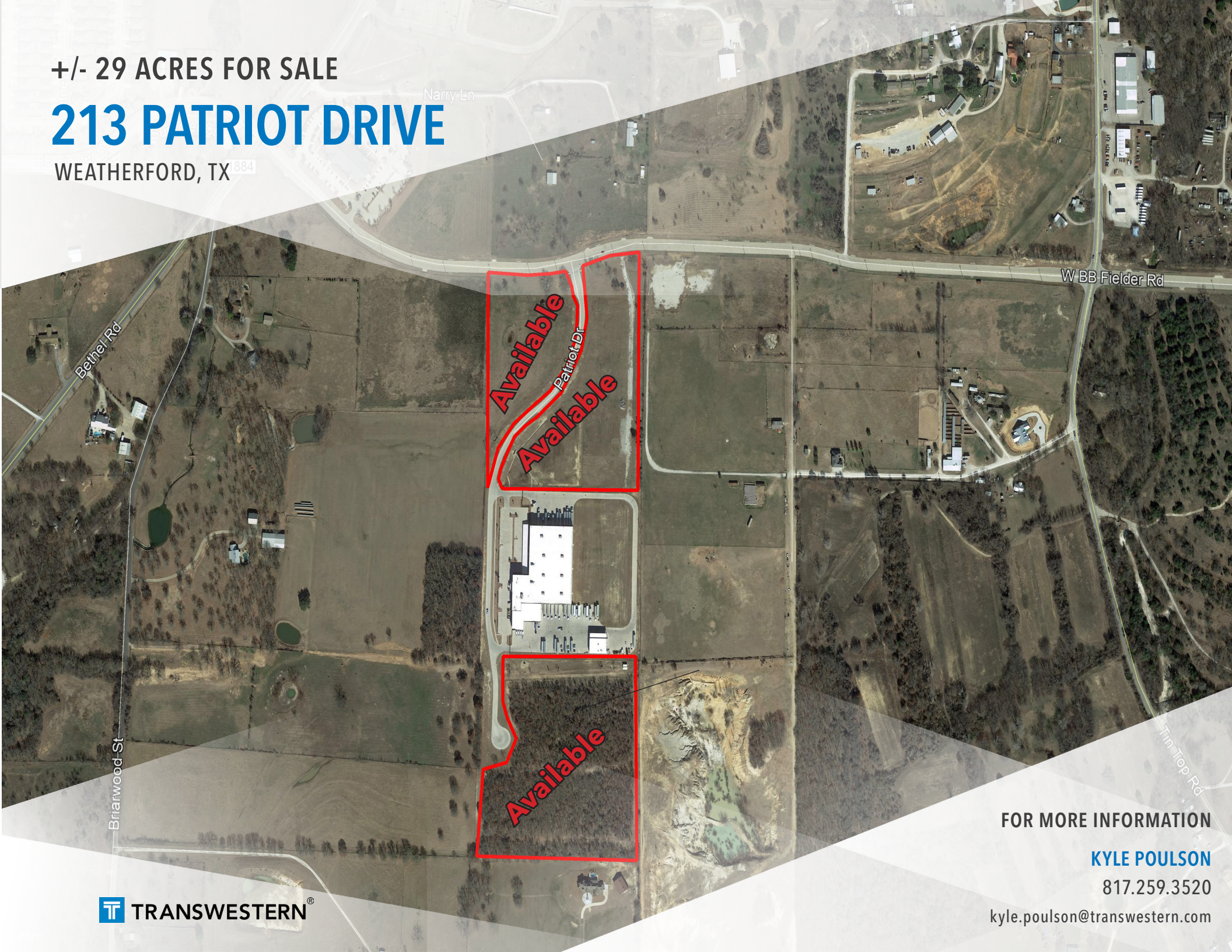


+/- 29 ACRES FOR SALE

213 PATRIOT DRIVE

WEATHERFORD, TX 7884



Available
Patriot Dr
Available

Available

Briarwood St

Bethel Rd

Narry Ln

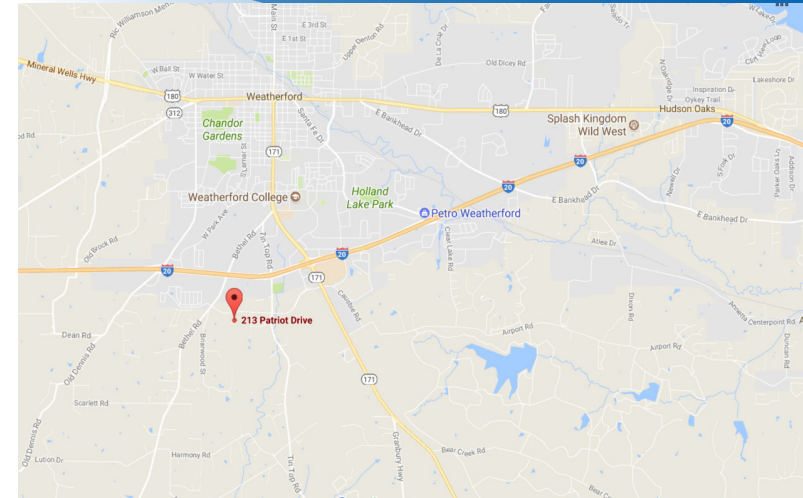
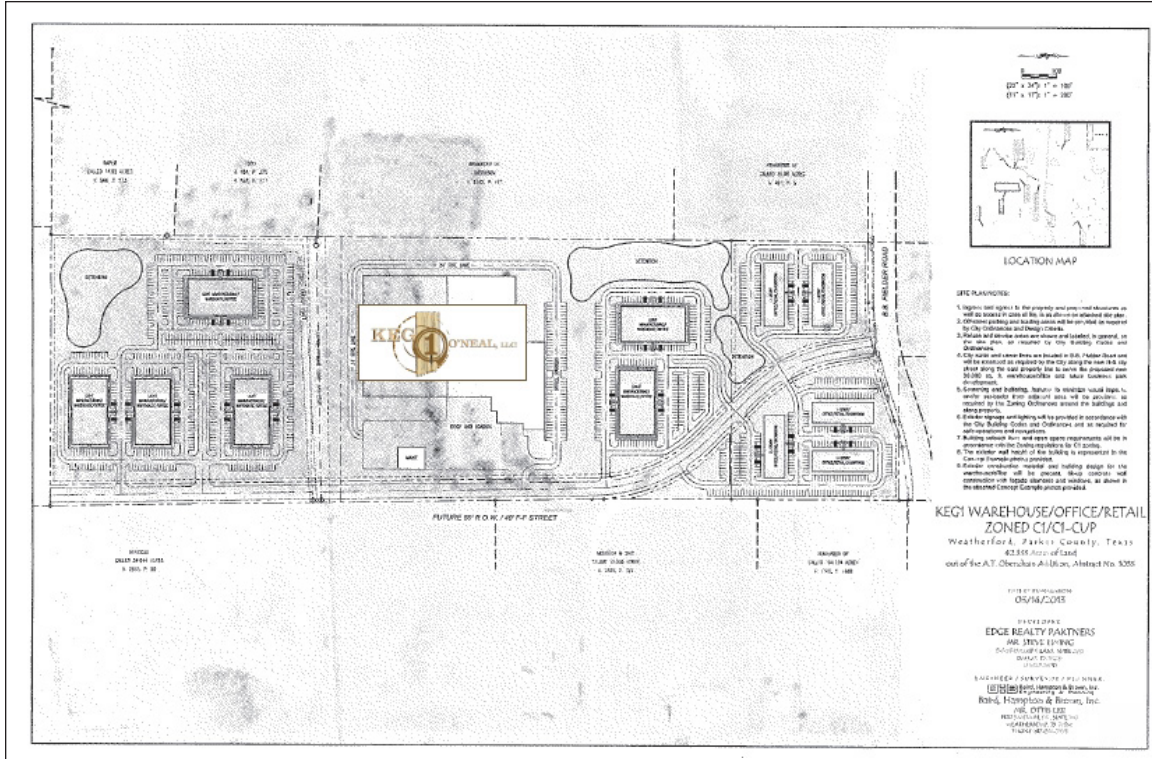
W BB Fielder Rd

Tin-Top Rd

+/- 29 ACRES FOR SALE

213 PATRIOT DRIVE

WEATHERFORD, TX



PROPERTY INFORMATION:

- Located in the SEQ of Bethel Road and BB Fielder Road in Weatherford, Texas
- KEG 1 O'Neal Office and Warehouse on site
- Office, retail, flex and industrial opportunities available
- Will divide
- Build to suit available
- Traffic Counts:
I-20 @ Bethel Road: 35,480 VPD
Bethel Road @ I-20: 5,900 VPD
- **SALES PRICE: CONTACT AGENT**

FOR MORE INFORMATION

Kyle Poulson

817.259.3520

kyle.poulson@transwestern.com



The information provided herein was obtained from sources believed reliable; however, Transwestern makes no guarantees, warranties or representations as to the completeness or accuracy thereof. The presentation of this property is submitted subject to errors, omissions, change of price or conditions, prior sale or lease, or withdrawal without notice.
Copyright © 2018 Transwestern.

+/- 29 ACRES FOR SALE

213 PATRIOT DRIVE

WEATHERFORD, TX



FOR MORE INFORMATION

Kyle Poulson

817.259.3520

kyle.poulson@transwestern.com

 **TRANSWESTERN**[®]

The information provided herein was obtained from sources believed reliable; however, Transwestern makes no guarantees, warranties or representations as to the completeness or accuracy thereof. The presentation of this property is submitted subject to errors, omissions, change of price or conditions, prior sale or lease, or withdrawal without notice. Copyright © 2018 Transwestern.

