

the**Labs**
by Sterling Bay



Introducing
theLabs
by Sterling Bay
Future Defining Space, Today.



A black and white photograph of a modern laboratory. The foreground shows a workstation with a sink, a faucet, and a large, adjustable overhead light fixture. The lab is equipped with various scientific instruments and storage units. The background shows more workstations and equipment, creating a sense of a large, well-equipped facility.

- # Highly Refined Space. Unprecedented Immediacy.
- Cooperational shared workplace and amenities
 - Overhead service carriers
 - Easy connect/disconnects for fast hook up of equipment
 - Flexible partitions
 - Highly secure lab environment
 - Secured underground parking for 58 cars
 - Renovated lobby and common areas

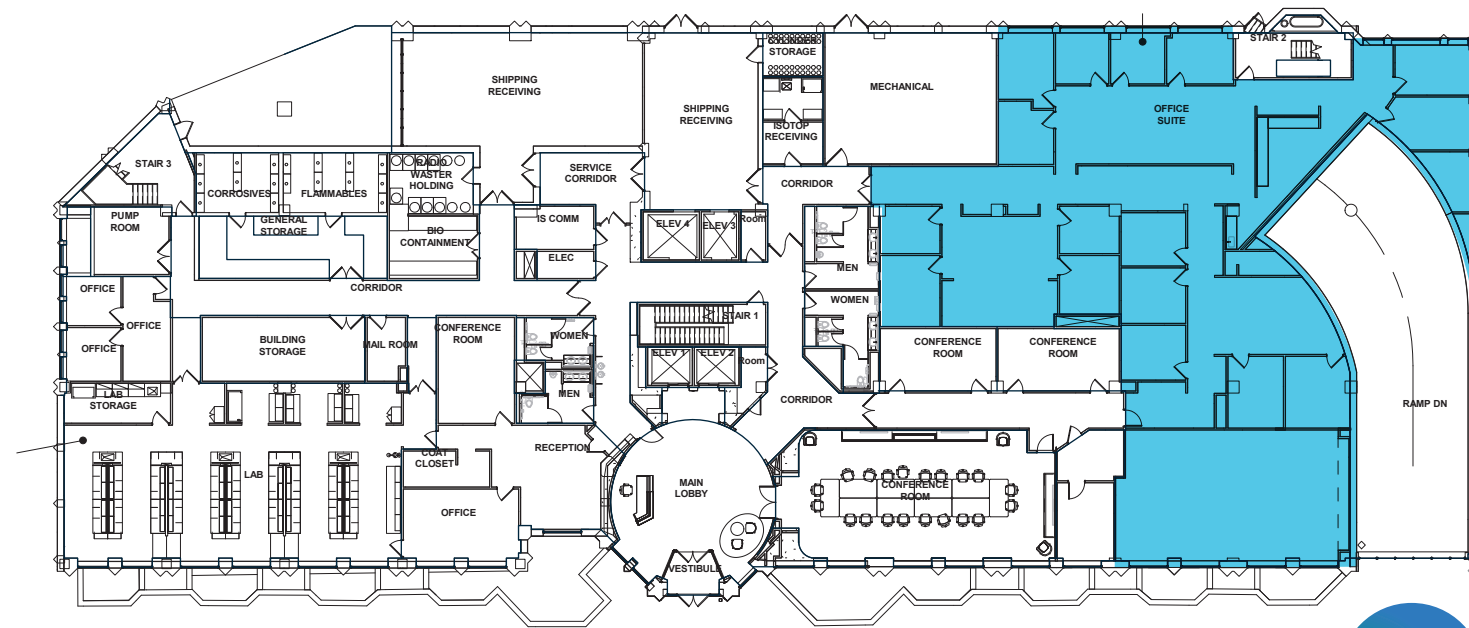


Unprecedented Immediacy. A Prosperous location.
Technically Extensive Facilities. Proven Infrastructure.
Diverse Capabilities. 2430 North Halsted. Highly
Defined Space. Unparalleled
Prosperous location. Technically extensive facilities.
Proven Infrastructure. Diverse Capabilities. 2430 North

Technically equipped facilities for the wide spectrum of Life Science disciplines

Biology, pharmacology, genetics, ecology, animals, neuroscience.
There's no crucial study 2430 North Halsted is incapable of.

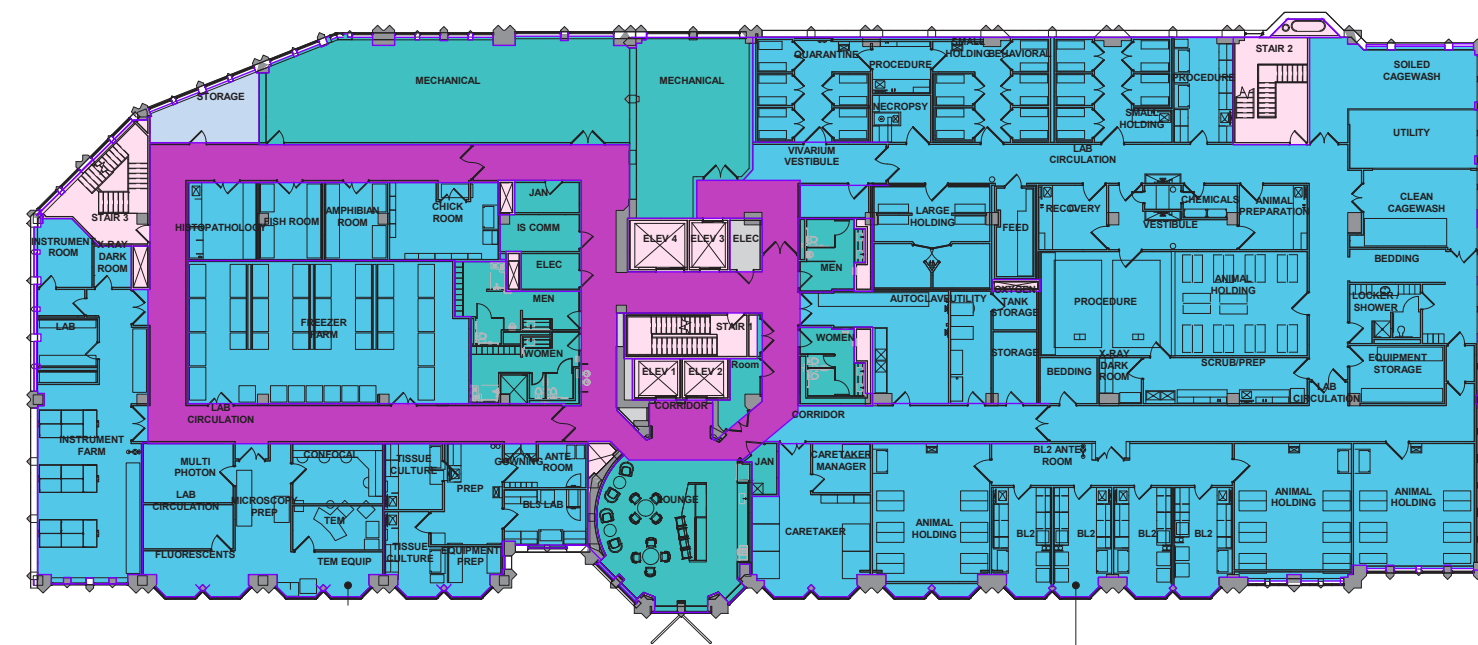
Ground Floor 8,574 RSF Available



VACANT SPACE



2nd Floor 31,599 RSF Available

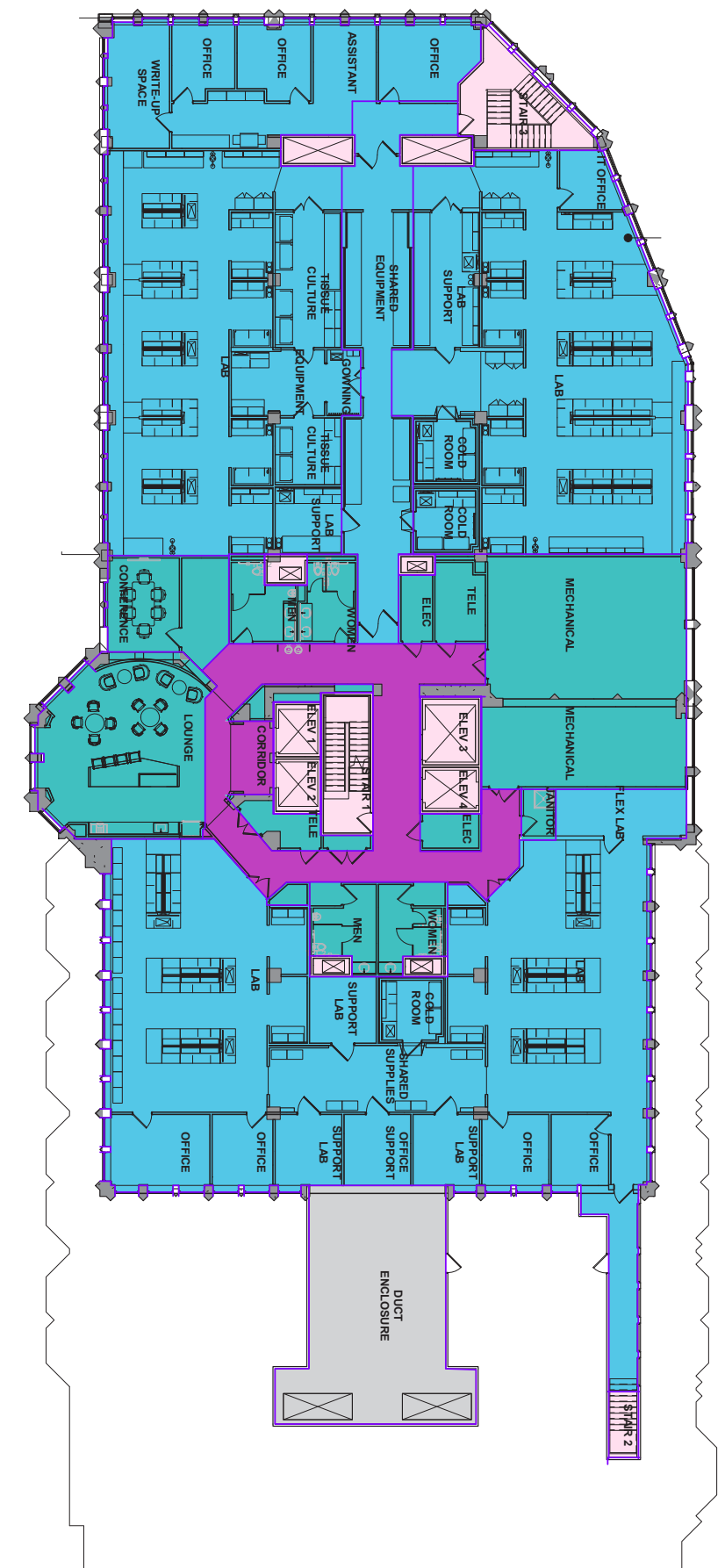


VACANT SPACE

5th Floor 20,585 RSF Available

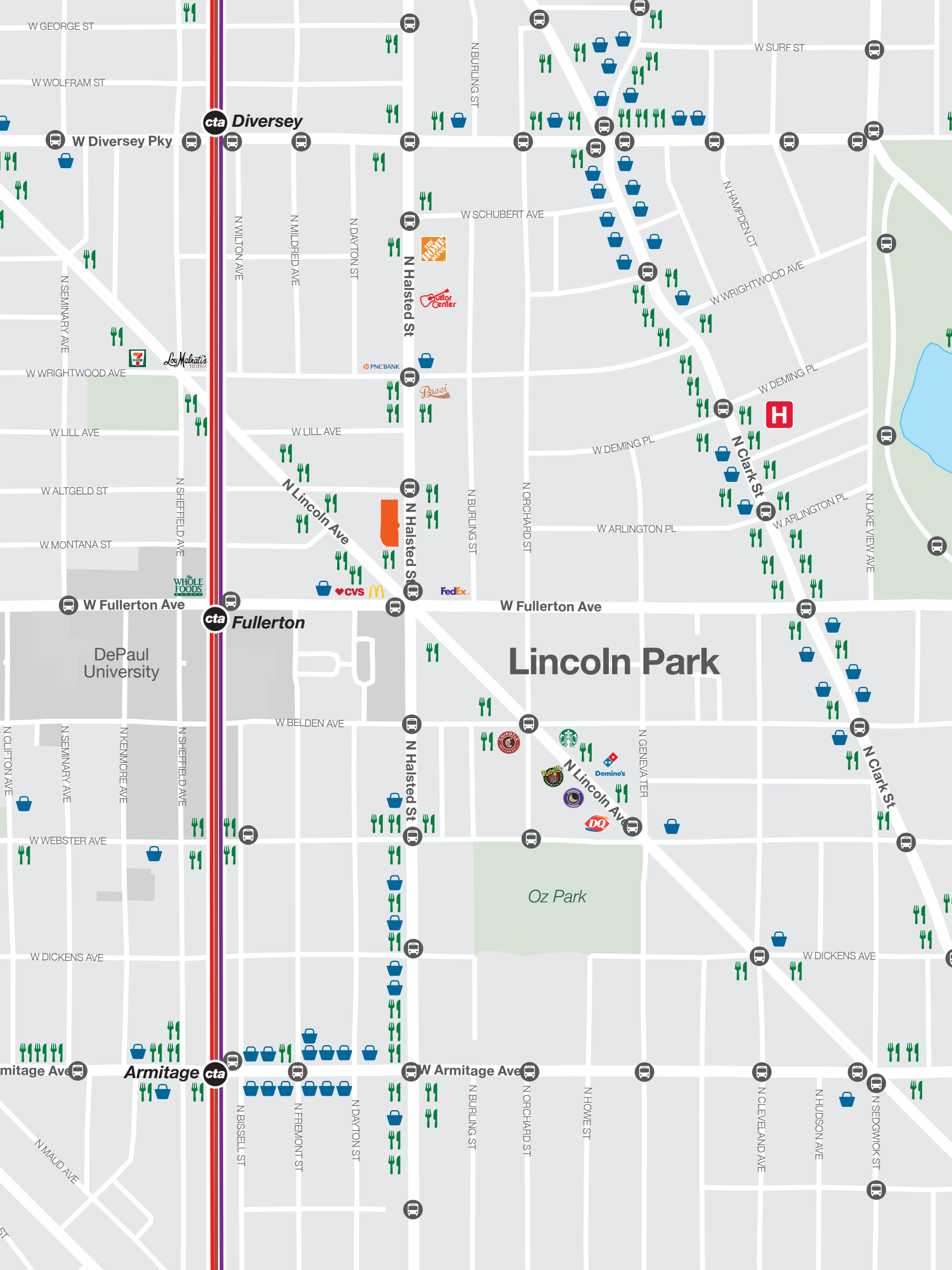
Wet lab space with vacuum, air and natural gas throughout, separate exhaust systems, and 6'0" fume hoods

Typical 11'x25' module with center island casework



VACANT SPACE





Access to a prosperous community

- 1 block to Fullerton Red/Brown/Purple line "L" station
- 2 blocks to DePaul University Campus
- 15 minute drive to The Loop
- Underground secured parking on-site
- Easy access to all major hospitals in the area



For Leasing Info



sterlingbay.com
leasing@sterlingbay.com
312.466.4110



David Saad
david.saad@cbre.com
1.312.935.1489