

Noble Professional Center

OFFICE SUITES FOR LEASE

15060 Ventura Blvd, Sherman Oaks



FEATURES

- Time Warner Cable and AT&T Business Fiber in Building
- Surrounded by Food and Other Retail Amenities
- Abundant Subterranean Parking - All Single Spaces!
- Convenient Visitor Parking Lot



AVAILABLE

Suite	Size (SF)	Rate	Description
Ground Floor	3,099	\$3.20/SF MG	Great use for gym, food, retail or medical. Private bathrooms.
400 SUBLEASE	3,266	Contact Broker	Top floor, double corner suite overlooking Ventura, private bathroom, L/X 10/31/17 (longer term available), partial glass offices (6 windowed offices).

PARKING *(per stall)*

Rate	Type
\$130	Unreserved
\$190	Reserved

For more information please contact:

Scott Romick
Principal
818.933.0305
sromick@lee-re.com
BRE# 01323527

Darren Casamassima
Principal
818.933.0303
dc@lee-re.com
BRE# 01425638



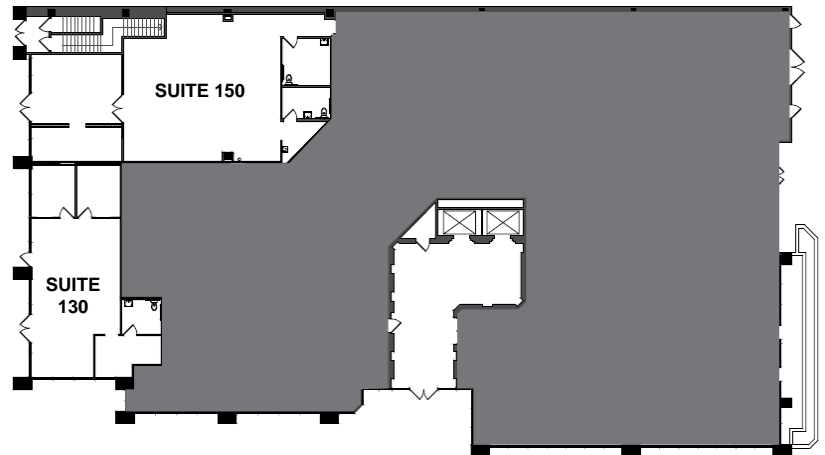
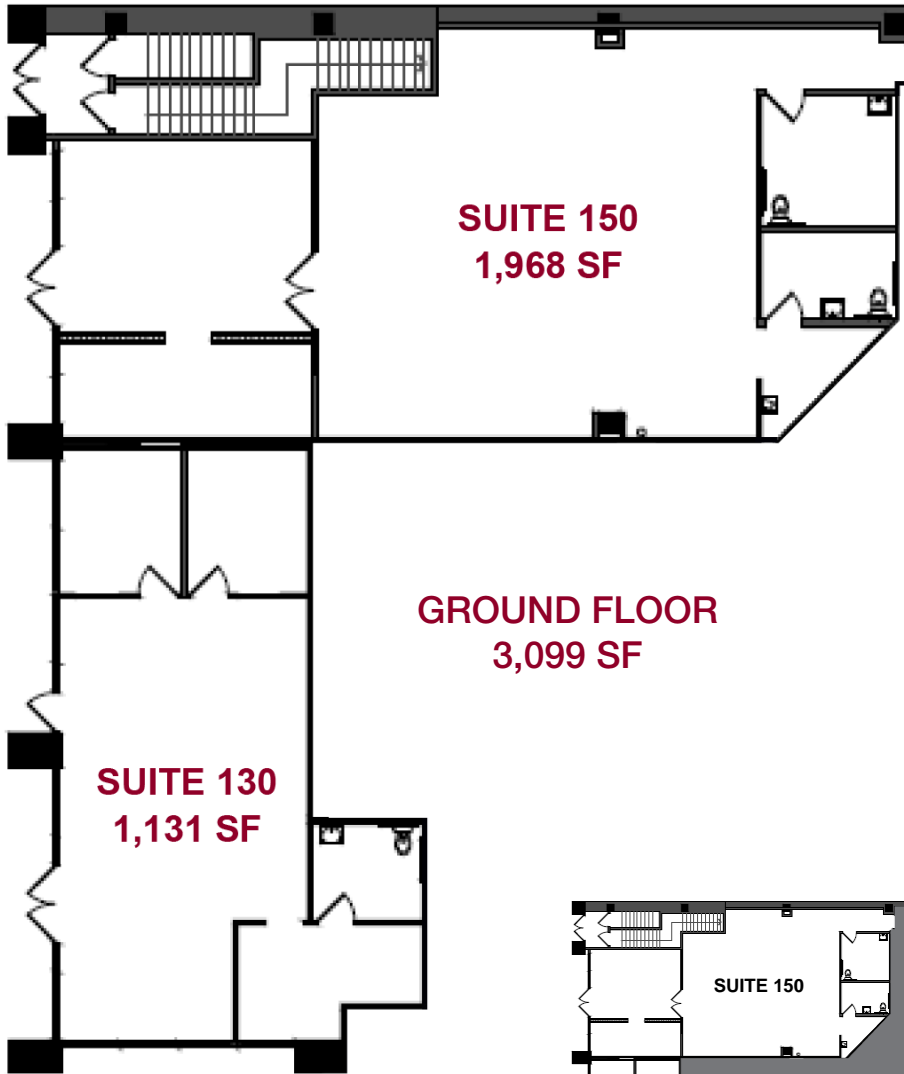
Lee & Associates® - LA North Ventura, Inc. • Corporate ID #01191898
A Member of the Lee & Associates® Group of Companies
15250 Ventura Blvd., Suite 100 • Sherman Oaks, CA 91403
P:818.986.9800 F:818.933.0405 • www.lee-associates.com

No warranty or representation is made to the accuracy of the foregoing information. Terms of sale or lease and availability are subject to change or withdrawal without notice.

Noble Professional Center

OFFICE SUITES FOR LEASE

15060 Ventura Blvd, Sherman Oaks



NOT TO SCALE

For more information please contact:

Scott Romick
Principal
818.933.0305
sromick@lee-re.com
BRE# 01323527

Darren Casamassima
Principal
818.933.0303
dc@lee-re.com
BRE# 01425638

LEE & ASSOCIATES
COMMERCIAL REAL ESTATE SERVICES

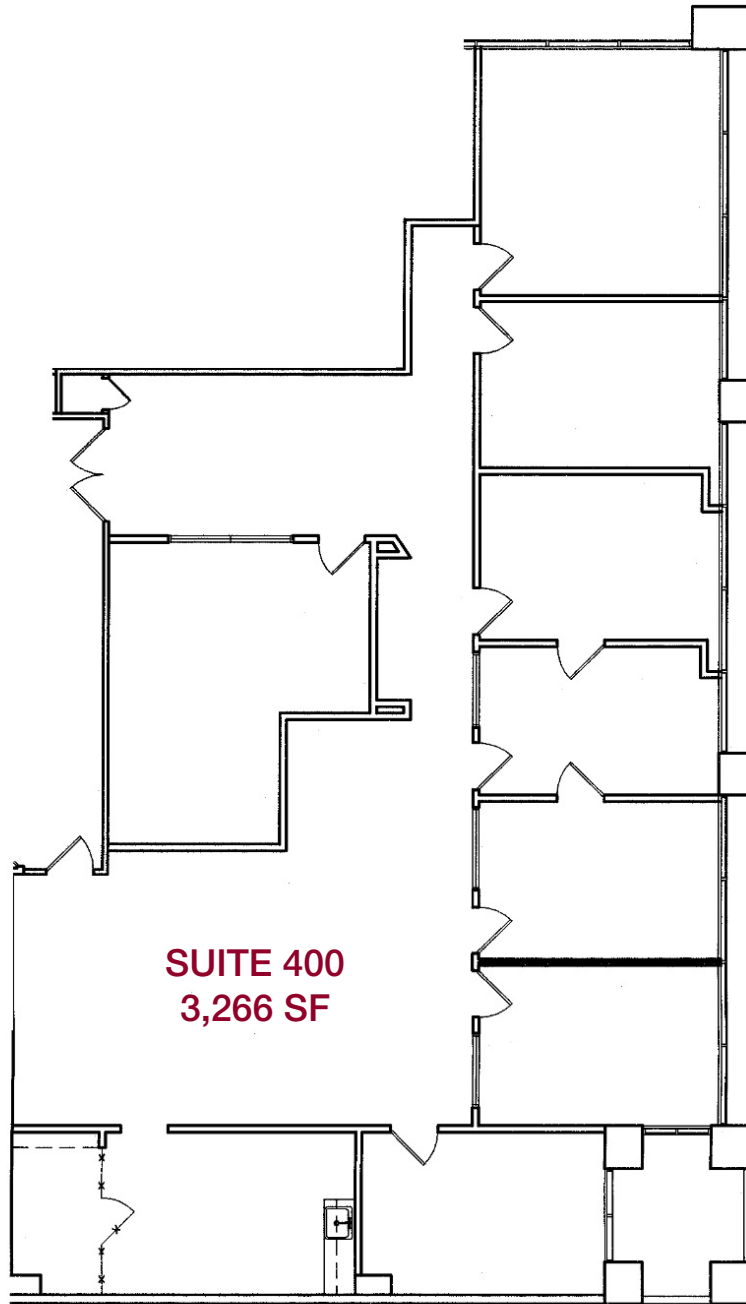
Lee & Associates® - LA NorthVentura, Inc. • Corporate ID #01191898
A Member of the Lee & Associates® Group of Companies
15250 Ventura Blvd., Suite 100 • Sherman Oaks, CA 91403
P:818.986.9800 F:818.933.0405 • www.lee-associates.com

No warranty or representation is made to the accuracy of the foregoing information. Terms of sale or lease and availability are subject to change or withdrawal without notice.

Noble Professional Center

OFFICE SUITES FOR LEASE

15060 Ventura Blvd, Sherman Oaks



NOT TO SCALE

For more information please contact:

Scott Romick
Principal
818.933.0305
sromick@lee-re.com
BRE# 01323527

Darren Casamassima
Principal
818.933.0303
dc@lee-re.com
BRE# 01425638



Lee & Associates® - LA North Ventura, Inc. • Corporate ID #01191898
A Member of the Lee & Associates® Group of Companies
15250 Ventura Blvd., Suite 100 • Sherman Oaks, CA 91403
P:818.986.9800 F:818.933.0405 • www.lee-associates.com

No warranty or representation is made to the accuracy of the foregoing information. Terms of sale or lease and availability are subject to change or withdrawal without notice.