

INLAND TERRACE CORPORATE CENTER PROFESSIONAL OFFICE FOR LEASE

27368 VIA INDUSTRIA - TEMECULA, CA 92590



PROPERTY HIGHLIGHTS:

- » Class A office building
- » First floor suites available
- » Elevator served
- » Views of the Temecula Valley
- » Ample parking
- » Two story lobby
- » Outdoor patio
- » New ownership
- » Low lease rates



JIM NADAL, CCIM, SIOR • 951.445.4520 • jnadal@leetemecula.com • Lic. ID#01040679

INLAND TERRACE CORPORATE CENTER PROFESSIONAL OFFICE FOR LEASE

27368 VIA INDUSTRIA - TEMECULA, CA 92590

AVAILABLE SPACE - 1ST FLOOR

Suite	SF (±)	Rate/SF	Description
114	1,227	\$1.40	Reception, 3 private offices, work area, coffee bar/break area and file storage area. Immediate occupancy.

Revised: 04/14/17

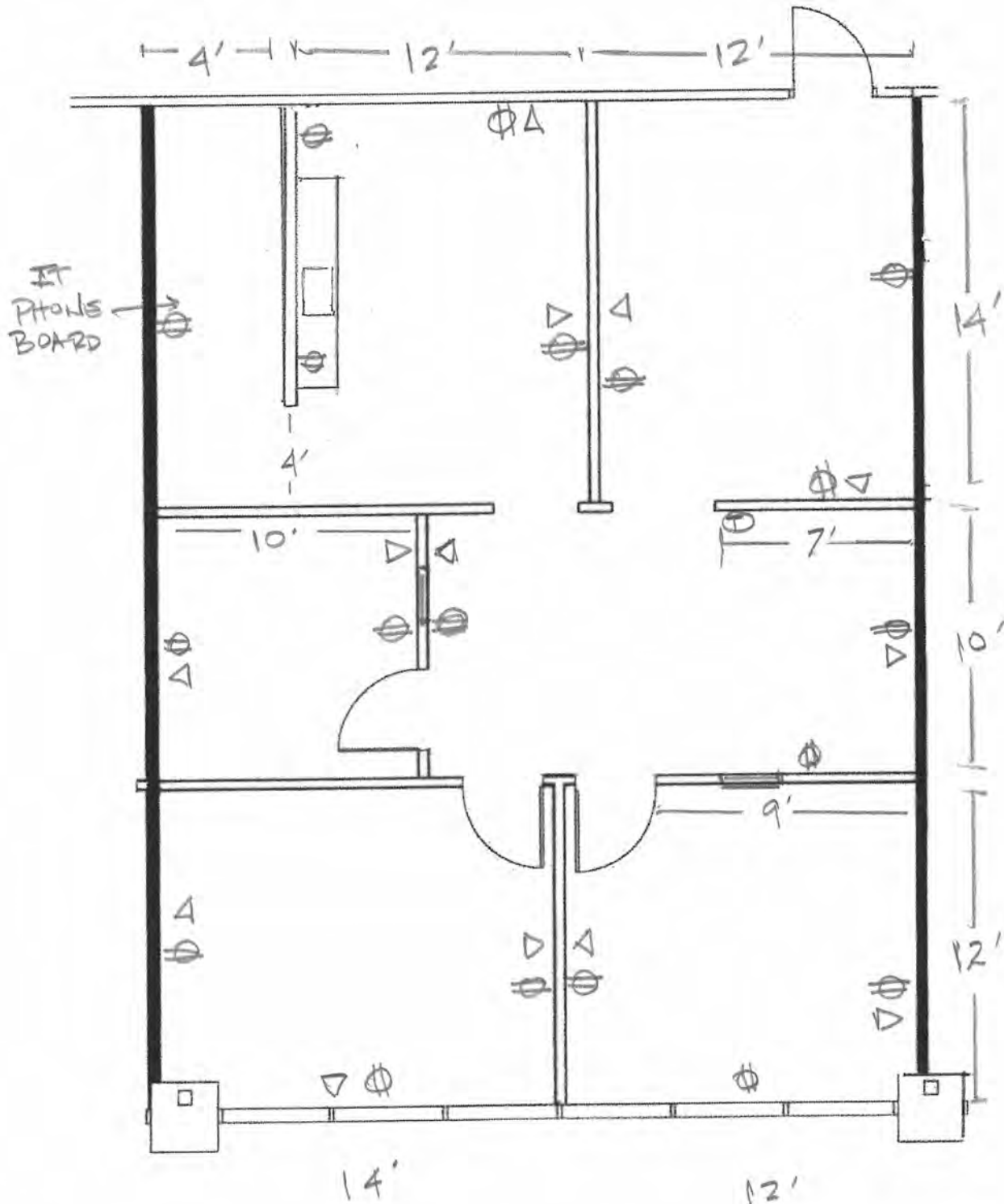


JIM NADAL, CCIM, SIOR • 951.445.4520 • jnadal@leetemecula.com • Lic. ID#01040679

INLAND TERRACE CORPORATE CENTER PROFESSIONAL OFFICE FOR LEASE

27368 VIA INDUSTRIA - TEMECULA, CA 92590

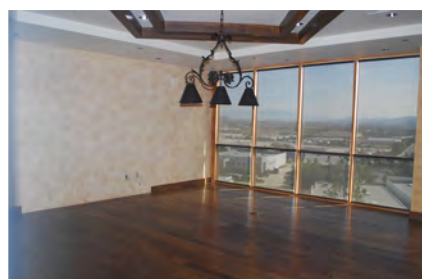
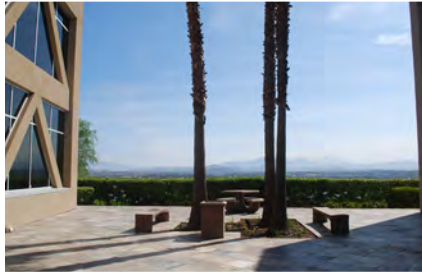
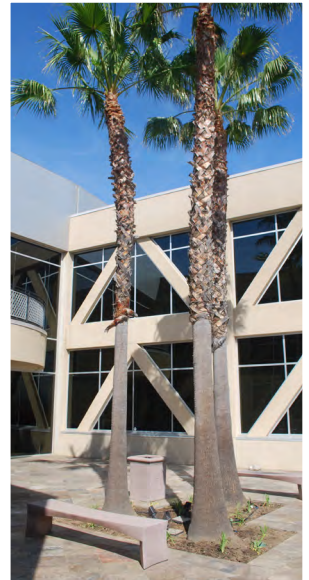
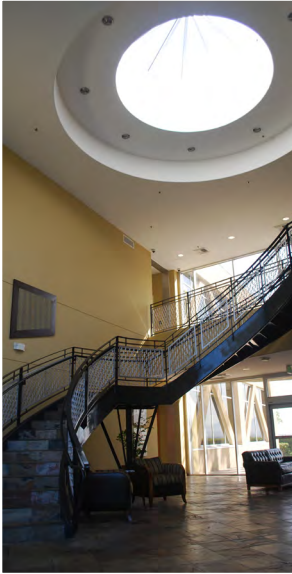
Suite 114



JIM NADAL, CCIM, SIOR • 951.445.4520 • jnadal@leetemecula.com • Lic. ID#01040679

INLAND TERRACE CORPORATE CENTER PROFESSIONAL OFFICE FOR LEASE

27368 VIA INDUSTRIA - TEMECULA, CA 92590



JIM NADAL, CCIM, SIOR • 951.445.4520 • jnadal@leetemecula.com • Lic. ID#01040679