

412 N 10th St 66.36 Acres

Ridgefield, WA

Two parcels: 39 acres, and
27.36 acres

66 acres of vacant farmland
all inside Urban Growth Area

Current zoning:

North 39 acres Ag-20
Unincorporated Clark County,
South 27 acres Office Park in
City of Ridgefield

Topo; flat to gentle rolling

Two single family residences

Solid barn, fields regularly
leased to farmers

Well water on site, Irrigation
District water rights, and CPU
water in the street

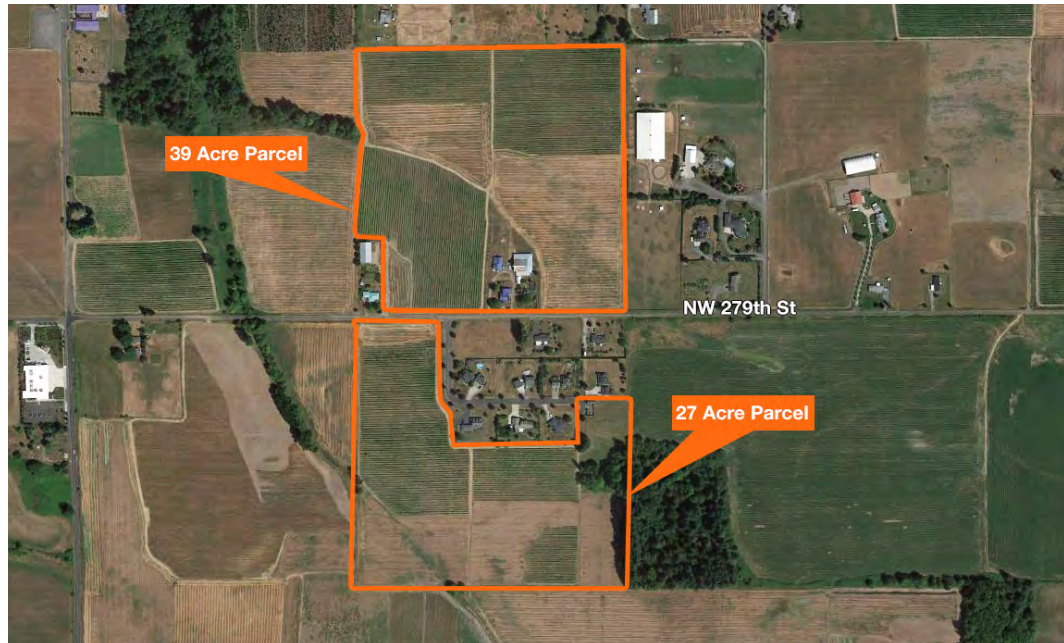
Owner will consider built to suit

Close to I-5 freeway exit 14

Neighbors PeaceHealth Hospital
development land, and
Tri-Mountain 18-hole Golf
Course

Spectacular mountain views

Price: \$80,000 Per Usable Acres



Location



Contact

Scott Fraser, SIOR

Senior Vice President

503.221.2268

sfraser@kiddermathews.com

Jones Trust 66 Acres Ridgefield



Contact

Scott Fraser, SIOR
Senior Vice President
503.221.2268
sfraser@kiddermathews.com