



**FOR  
LEASE**

**OUTSIDE STORAGE YARDS AVAILABLE**

12560 HIGHWAY 67  
LAKESIDE, CALIFORNIA 92040

±1-20 ACRES AVAILABLE FOR LEASE

**TIM GOSSELIN**

Vice President

(760) 822-3730

[tgosselin@lee-associates.com](mailto:tgosselin@lee-associates.com)

CalBRE Lic#: 01495432

# PROPERTY OVERVIEW

## OUTSIDE STORAGE YARDS AVAILABLE

12560 HIGHWAY 67  
LAKESIDE, CALIFORNIA 92040

±1-20 ACRES AVAILABLE FOR LEASE

- 1 to 20 acres available for lease
- Flat pad fully compacted laydown yard
- Graded to drain
- Will break up from 1 to 20 acres
- Lakeside Industrial Market
- Zoning: Heavy Industrial, M-58
- Shown by appointment only
- Lease rate: \$0.17 per square foot IG

[VIEW ZONING ORDINANCE](#)

(Click to view M-58 Zoning Ordinance)



**LEE &  
ASSOCIATES**  
COMMERCIAL REAL ESTATE SERVICES

1900 Wright Place, Suite 200 Carlsbad, CA 92008 P: 760-929-9700 F: 760-929-9977 [www.lee-associates.com](http://www.lee-associates.com)

All information furnished regarding property for sale, rental or financing is from sources deemed reliable, but no warranty or representation is made to the accuracy thereof and same is submitted to errors, omissions, change of price, rental or other conditions prior to sale, lease or financing or withdrawal without notice. No liability of any kind is to be imposed on the broker herein.

**TIM GOSSELIN**  
(760) 822-3730  
[tgosselin@lee-associates.com](mailto:tgosselin@lee-associates.com)  
CalBRE Lic#: 01495432



CARLTON OAKS GOLF COURSE  
→

**SUBJECT PROPERTY**  
±1-20 ACRES  
AVAILABLE  
FOR LEASE

**LEE & ASSOCIATES**  
COMMERCIAL REAL ESTATE SERVICES

**TIM GOSSELIN**  
(760) 822-3730  
tgosselin@lee-associates.com  
CalBRE Lic#: 01495432

1900 Wright Place, Suite 200 Carlsbad, CA 92008 P: 760-929-9700 F: 760-929-9977 www.lee-associates.com

All information furnished regarding property for sale, rental or financing is from sources deemed reliable, but no warranty or representation is made to the accuracy thereof and same is submitted to errors, omissions, change of price, rental or other conditions prior to sale, lease or financing or withdrawal without notice. No liability of any kind is to be imposed on the broker herein.



EL CAJON

San Vicente Reserve



Slaughterhouse Canyon Rd

POWAY



LEE & ASSOCIATES

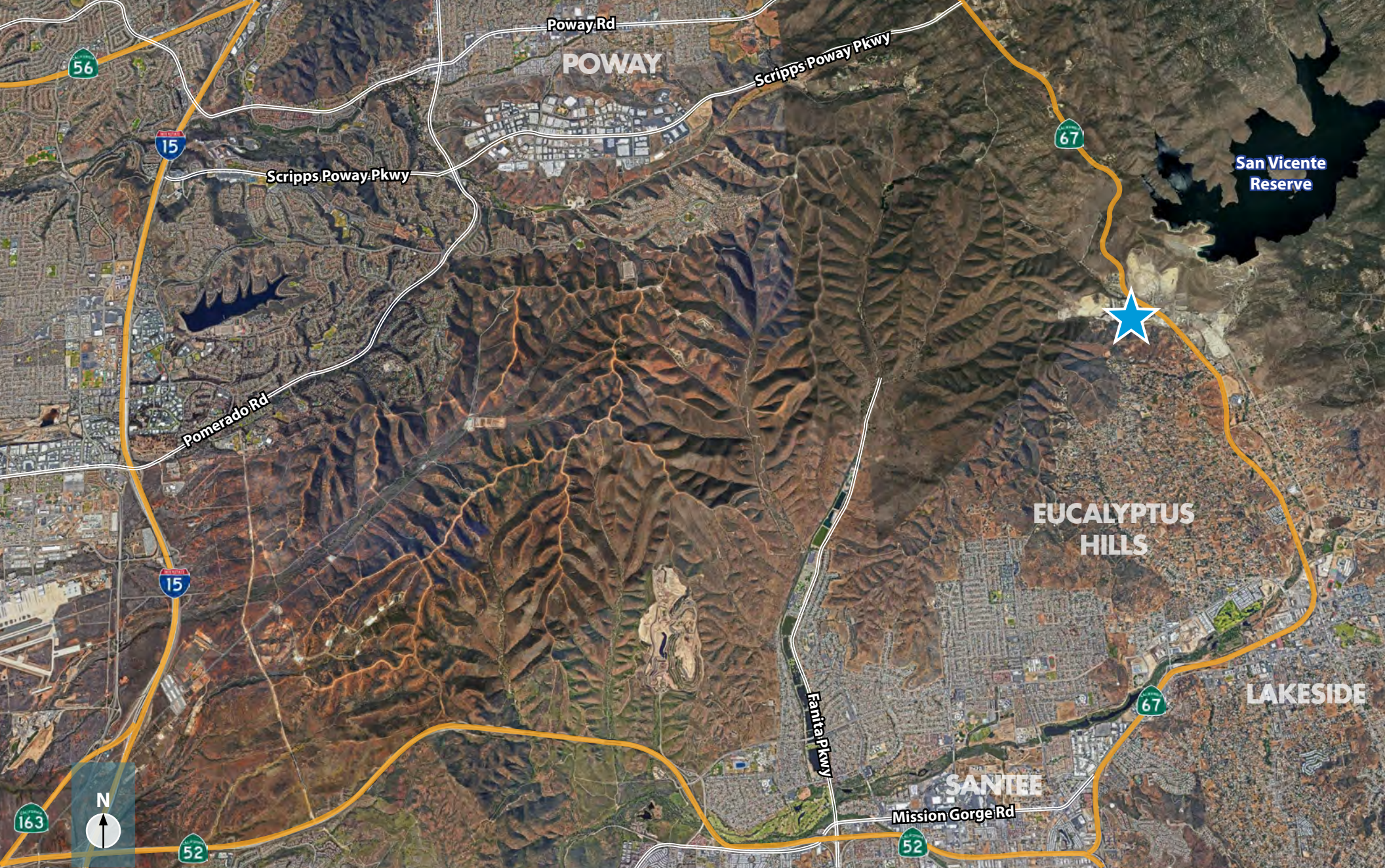
COMMERCIAL REAL ESTATE SERVICES

TIM GOSSELIN

(760) 822-3730  
tgosselin@lee-associates.com  
CalBRE Lic#: 01495432

1900 Wright Place, Suite 200 Carlsbad, CA 92008 P: 760-929-9700 F: 760-929-9977 www.lee-associates.com

All information furnished regarding property for sale, rental or financing is from sources deemed reliable, but no warranty or representation is made to the accuracy thereof and same is submitted to errors, omissions, change of price, rental or other conditions prior to sale, lease or financing or withdrawal without notice. No liability of any kind is to be imposed on the broker herein.



**LEE & ASSOCIATES**  
COMMERCIAL REAL ESTATE SERVICES

**TIM GOSSELIN**  
(760) 822-3730  
tgosselin@lee-associates.com  
CalBRE Lic#: 01495432

1900 Wright Place, Suite 200 Carlsbad, CA 92008 P: 760-929-9700 F: 760-929-9977 [www.lee-associates.com](http://www.lee-associates.com)

All information furnished regarding property for sale, rental or financing is from sources deemed reliable, but no warranty or representation is made to the accuracy thereof and same is submitted to errors, omissions, change of price, rental or other conditions prior to sale, lease or financing or withdrawal without notice. No liability of any kind is to be imposed on the broker herein.

# AERIAL MAP

## OUTSIDE STORAGE YARDS AVAILABLE

12560 HIGHWAY 67  
LAKESIDE, CALIFORNIA 92040

±1-20 ACRES AVAILABLE FOR LEASE



COMMERCIAL REAL ESTATE SERVICES

**TIM GOSSELIN**

Vice President

(760) 822-3730

tgosselin@lee-associates.com

CalBRE Lic#: 01495432

1900 Wright Place, Suite 200 Carlsbad, CA 92008

P: 760-929-9700 F: 760-929-9977 [www.lee-associates.com](http://www.lee-associates.com)

All information furnished regarding property for sale, rental or financing is from sources deemed reliable, but no warranty or representation is made to the accuracy thereof and same is submitted to errors, omissions, change of price, rental or other conditions prior to sale, lease or financing or withdrawal without notice. No liability of any kind is to be imposed on the broker herein.

**PRIOR TO TOUR**  
the following link to be  
printed and signed.

**DOWNLOAD DOCUMENT**

**ALL PROPOSALS**  
to include the following  
confidentiality agreement.

**DOWNLOAD DOCUMENT**

# 12560 HIGHWAY 67

LAKEVILLE, CALIFORNIA 92040

**TIM GOSSELIN**  
Vice President  
(760) 822-3730  
tgosselin@lee-associates.com  
CalBRE Lic#: 01495432



COMMERCIAL REAL ESTATE SERVICES

1900 Wright Place, Suite 200 Carlsbad, CA 92008 P: 760-929-9700 F: 760-929-9977 [www.lee-associates.com](http://www.lee-associates.com)

All information furnished regarding property for sale, rental or financing is from sources deemed reliable, but no warranty or representation is made to the accuracy thereof and same is submitted to errors, omissions, change of price, rental or other conditions prior to sale, lease or financing or withdrawal without notice. No liability of any kind is to be imposed on the broker herein.