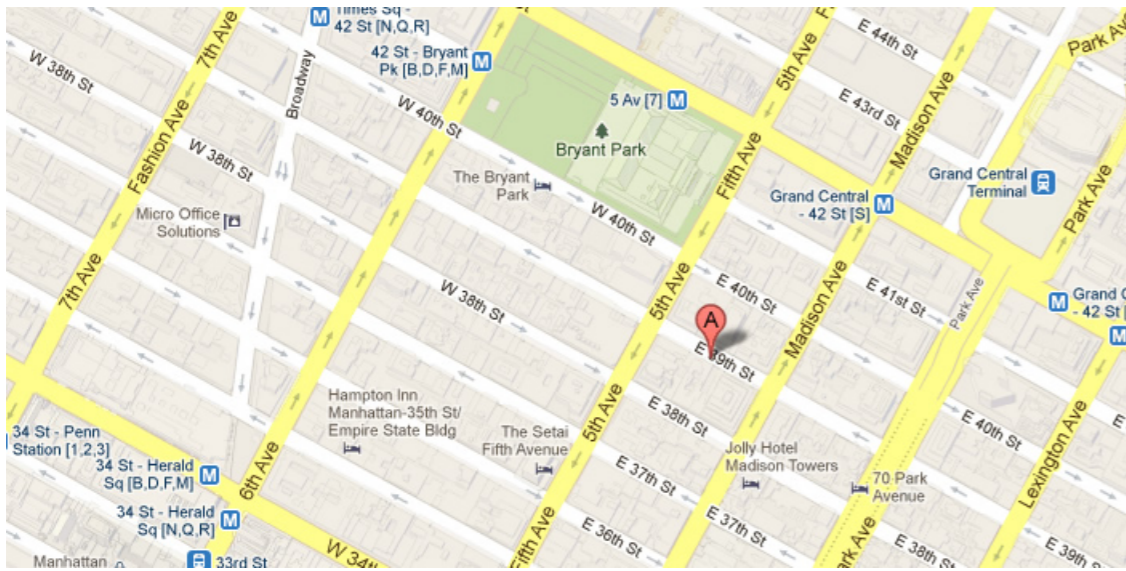




10 EAST 39TH STREET, New York, NY 10016



95,364.00 SF

Up To 1,606 and 4,791 SF Available

Office building with street level retail

Lobby renovated and new elevator cabs installed in 2011

Built: 1915 Architect: Herman Lee Meader

Tenants

CROWN TROPHY

Asia Food, LLC

MRMD CORP.

GZB Realty LLC

10 EAST COPIER INC.

For more information call

1- 212- 249- 1550

KOEPEL ROSEN

40 East 69th Street

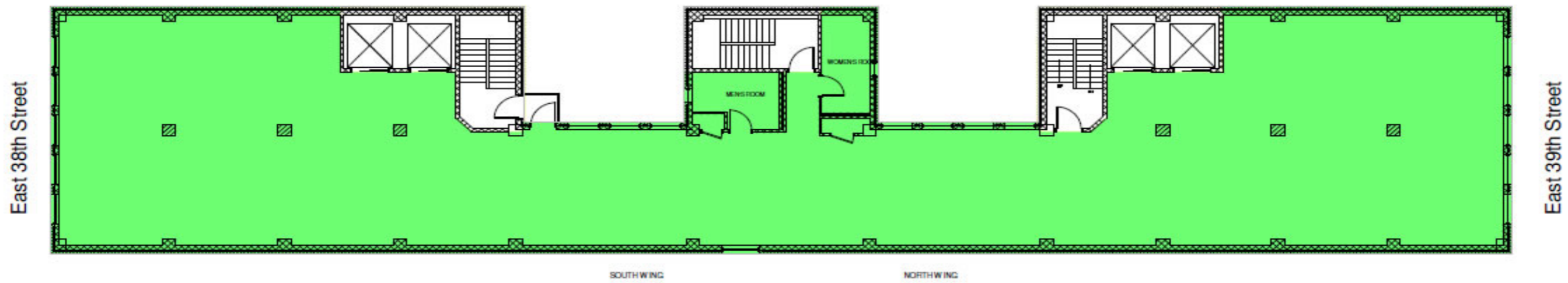
New York, NY 10021

dkoepfel@koeppelrosen.com

10 East 39th Street



Typical Floor Plan



For more information call
1-212-249-1550
KOEPEL ROSEN
40 East 69th Street
New York, NY 10021
dkoeppe@koeppe Rosen.com