

OAKRIDGE BUSINESS CENTER

FOR LEASE
4,980 SF

1209 W N CARRIER PKWY, SUITE 301
GRAND PRAIRIE, TX 75050



BUILDING SPECIFICATIONS

Address:	1209 W N Carrier Pkwy, Suite 301 Grand Prairie, TX 75050
Suite size:	4,890 SF
Office:	4,089 SF
Warehouse	720 SF
Clear Height	16'
Truck Loading:	1 Dock door
Comments:	Oakridge Business Center offers excellent, high visibility, front park/rear load, office/flex space located on Carrier Pkwy in the Great Southwest Industrial Park. Space sizes range from 3,000-100,000 SF in a four building project totaling 328,243 SF providing dock high and ramped loading door configurations

FOR MORE INFORMATION,
PLEASE CONTACT:

Mark Graybill, SIOR, CCIM
Principal
O: 972.934.4000
C: 214.914.5537
mgraybill@lee-associates.com

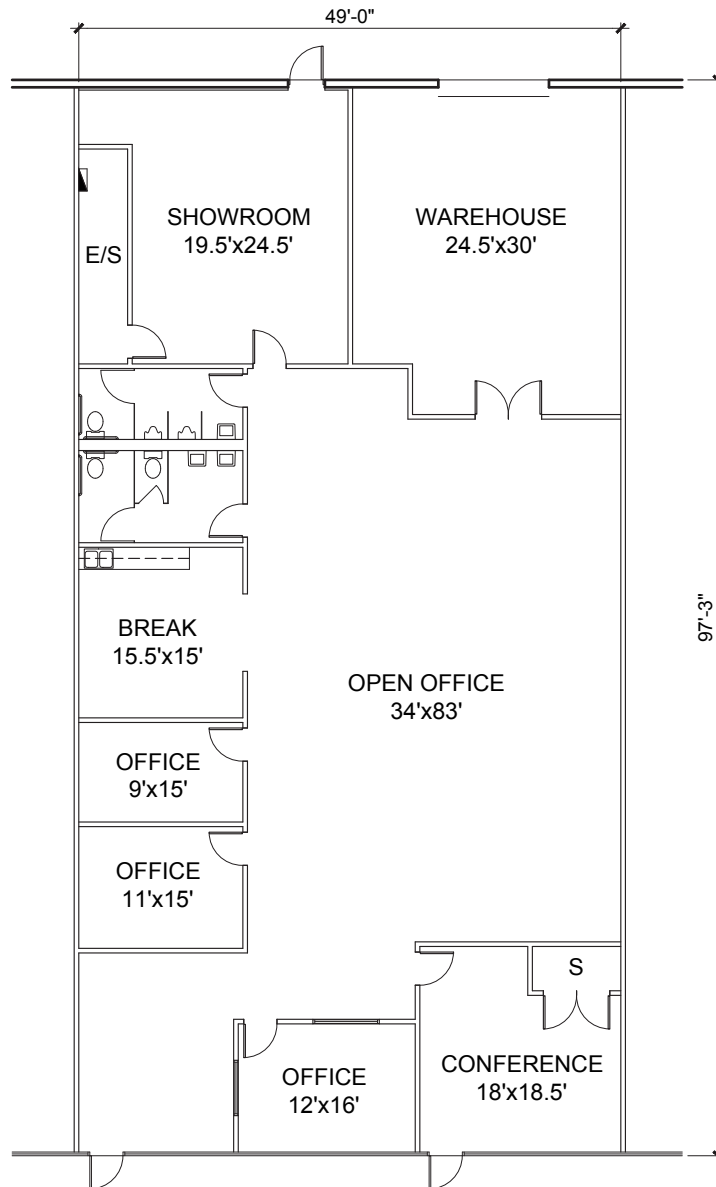
Colton Rhodes
Associate
O: 972.934.4017
C: 325.660.2636
crhodes@lee-associates.com



LEASED BY:



For Lease



FOR MORE INFORMATION,
PLEASE CONTACT:

Mark Graybill, SIOR, CCIM
Principal
O: 972.934.4000
C: 214.914.5537
mgraybill@lee-associates.com

Colton Rhodes
Associate
O: 972.934.4017
C: 325.660.2636
crhodes@lee-associates.com

