



**VIEW INSIDE**

**1600-1634  
E Grand Blvd**

**Mt Elliott St**

**E Grand Blvd**



# 1600-1634 E. GRAND BLVD DETROIT, MICHIGAN

For more information, contact:

**PETER VANDERKAAY**

(248) 359 3837

[pvanderkaay@signatureassociates.com](mailto:pvanderkaay@signatureassociates.com)

**PAUL SAAD**

(248) 359 0652

[psaad@signatureassociates.com](mailto:psaad@signatureassociates.com)



**SIGNATURE  
ASSOCIATES**

KNOW SIGNATURE | KNOW RESULTS

# PROPERTY OVERVIEW

**FOR SALE //**  
**2-BUILDING PROPERTY**  
**TOTALING 184,738 SQ. FT.**

## AVAILABILITY FOR LEASE

SUITE	SQ. FT.
107	3,189
201	5,000
300N	462
302	1,525
304	1,006
4 <sup>TH</sup> FL	2,108
4 <sup>TH</sup> FL	4,098
4 <sup>TH</sup> FL	1,121
4 <sup>TH</sup> FL	909

## 1600 E. GRAND BLVD – OFFICE

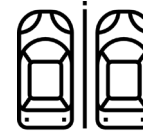
- 462-5,000 office square feet available for lease
- 80,479 total building square feet available for sale
- 4-story office building
- Turn-key office space
- 4<sup>th</sup> floor is available with great views
- Elevator access with additional full freight elevator
- Potential to add roof deck space

## 1634 E. GRAND BLVD – WAREHOUSE/INDUSTRIAL

- 104,259 total building square feet available for sale
- 3,189 sq. ft. first floor warehouse available for lease
- Secure gated parking
- Space includes grade level doors and truckwells



**IMMEDIATE ACCESS  
TO I-94 & JUST EAST  
OF I-75**



**SECURED GATED  
PARKING**



**CLOSE TO NEW FCA  
PLANT, DAKKOTA  
INTEGRATED SYSTEMS  
AND GM DETROIT-  
HAMTRAMCK  
ASSEMBLY PLANT**

# ENTIRE SITE FOR SALE // 1600-1634 E. GRAND BLVD



1600-1634  
E Grand Blvd

Mt Elliott St

E Grand Blvd

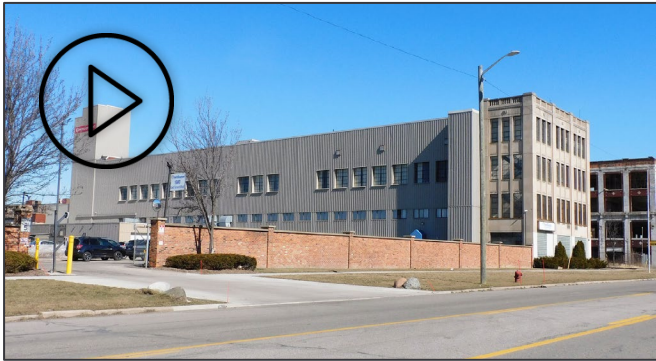


NORTH

# ENTIRE SITE FOR SALE // 1600-1634 E. GRAND BLVD

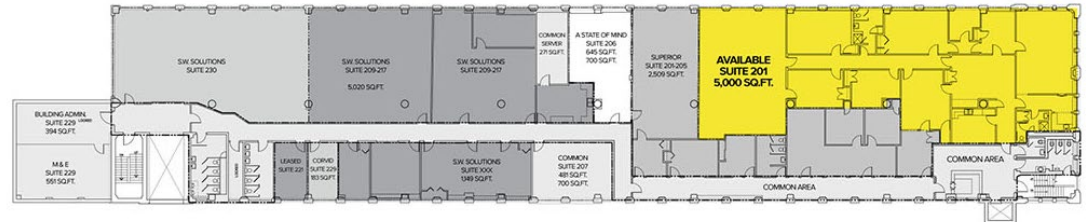


# OFFICE // 1600 E. GRAND BLVD

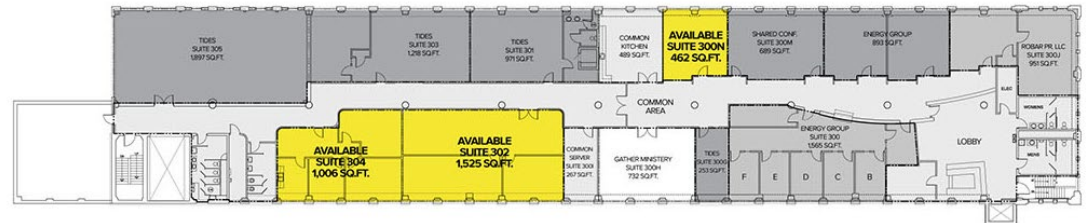


- 197-6,900 office square feet
- 3,189 warehouse square feet
- 80,479 total building square feet
- 4-story office building
- Turn-key office space
- 4th floor is available with great views
- Elevator access with additional full freight elevator
- Potential to add roof deck space

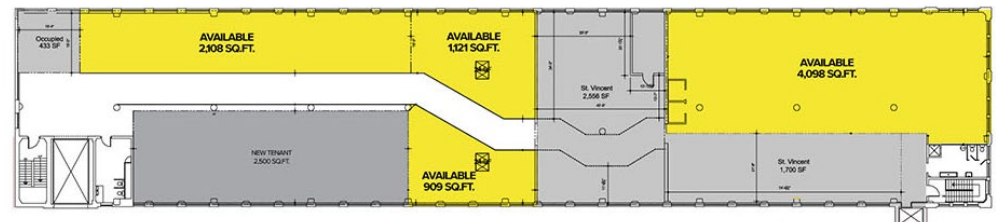
## 1600 SECOND FLOOR



## 1600 THIRD FLOOR



## 1600 FOURTH FLOOR





**FOURTH FLOOR // 8,236 SQ. FT. AVAILABLE**



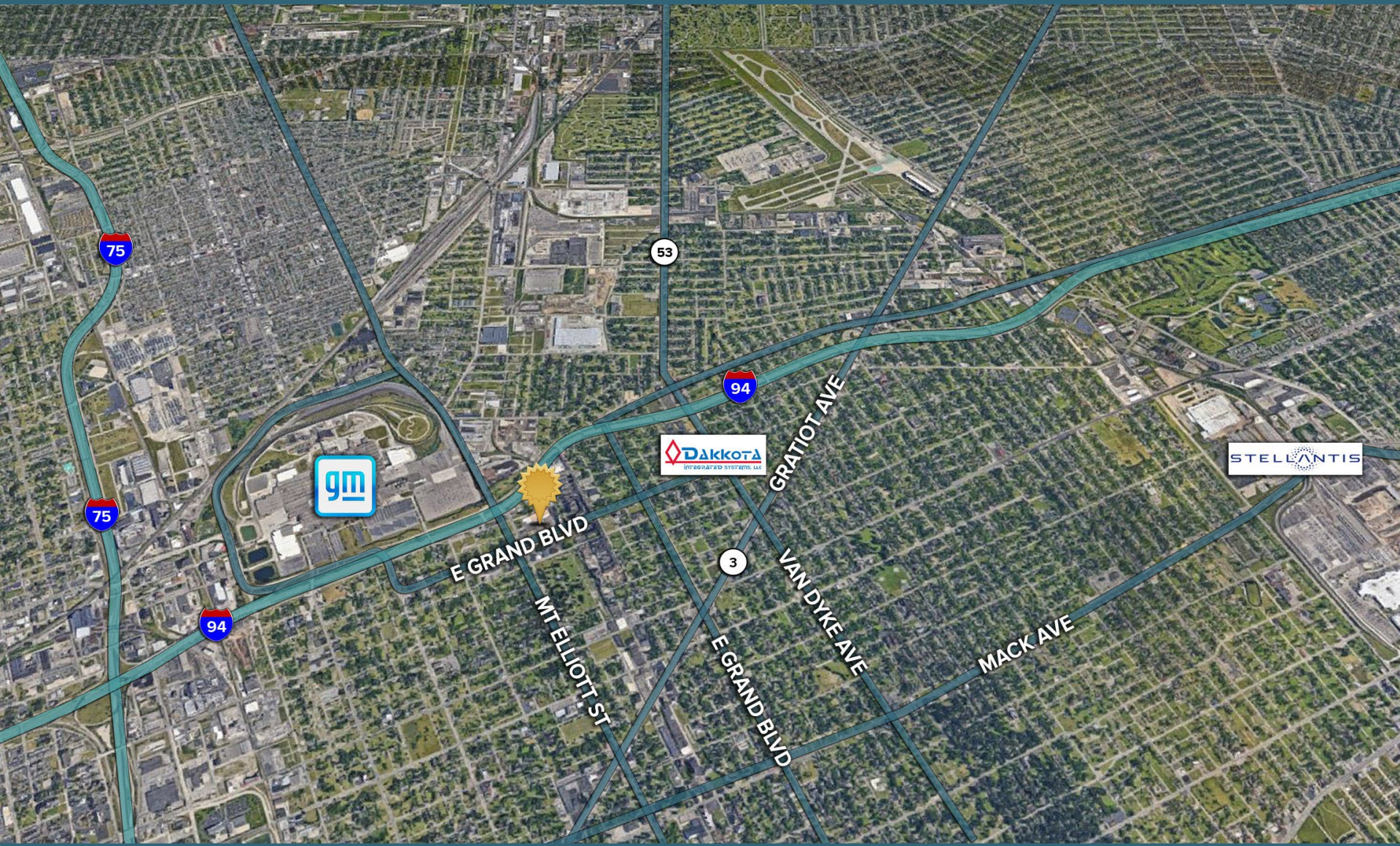


LOBBY AREA ON THIRD FLOOR



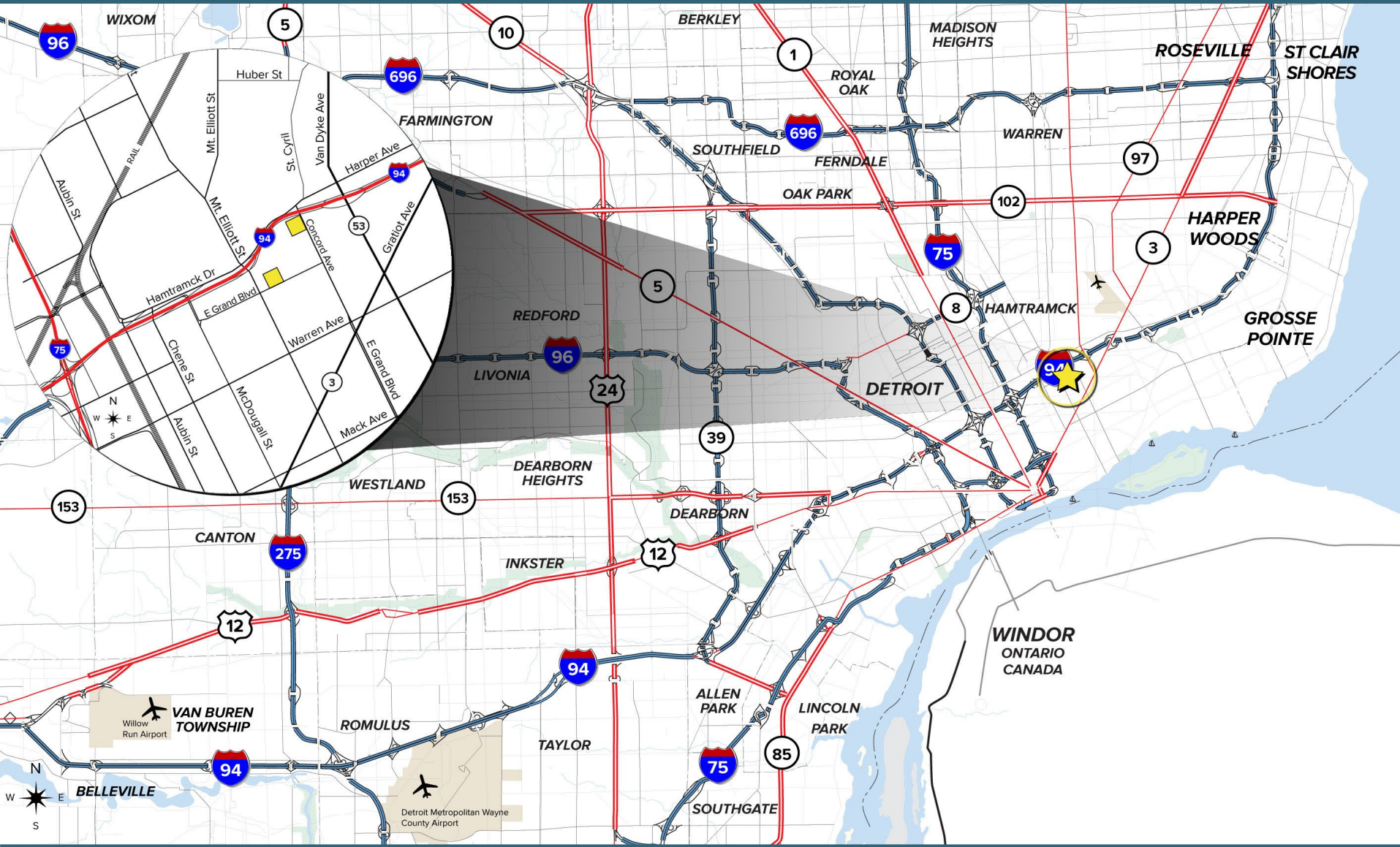
COMMON KITCHEN AREA

# CLOSE TO LARGE MANUFACTURERS





# EASY ACCESS TO ALL MAJOR FREEWAYS



For more information, contact:

**PETER VANDERKAAY**

(248) 359 3837

[pvanderkaay@signatureassociates.com](mailto:pvanderkaay@signatureassociates.com)

**PAUL SAAD**

(248) 359 0652

[psaad@signatureassociates.com](mailto:psaad@signatureassociates.com)

**SIGNATURE ASSOCIATES**

One Towne Square, Suite 1200

Southfield, Michigan 48076

(248) 948 9000

[www.signatureassociates.com](http://www.signatureassociates.com)



**SIGNATURE  
ASSOCIATES**

KNOW SIGNATURE | KNOW RESULTS