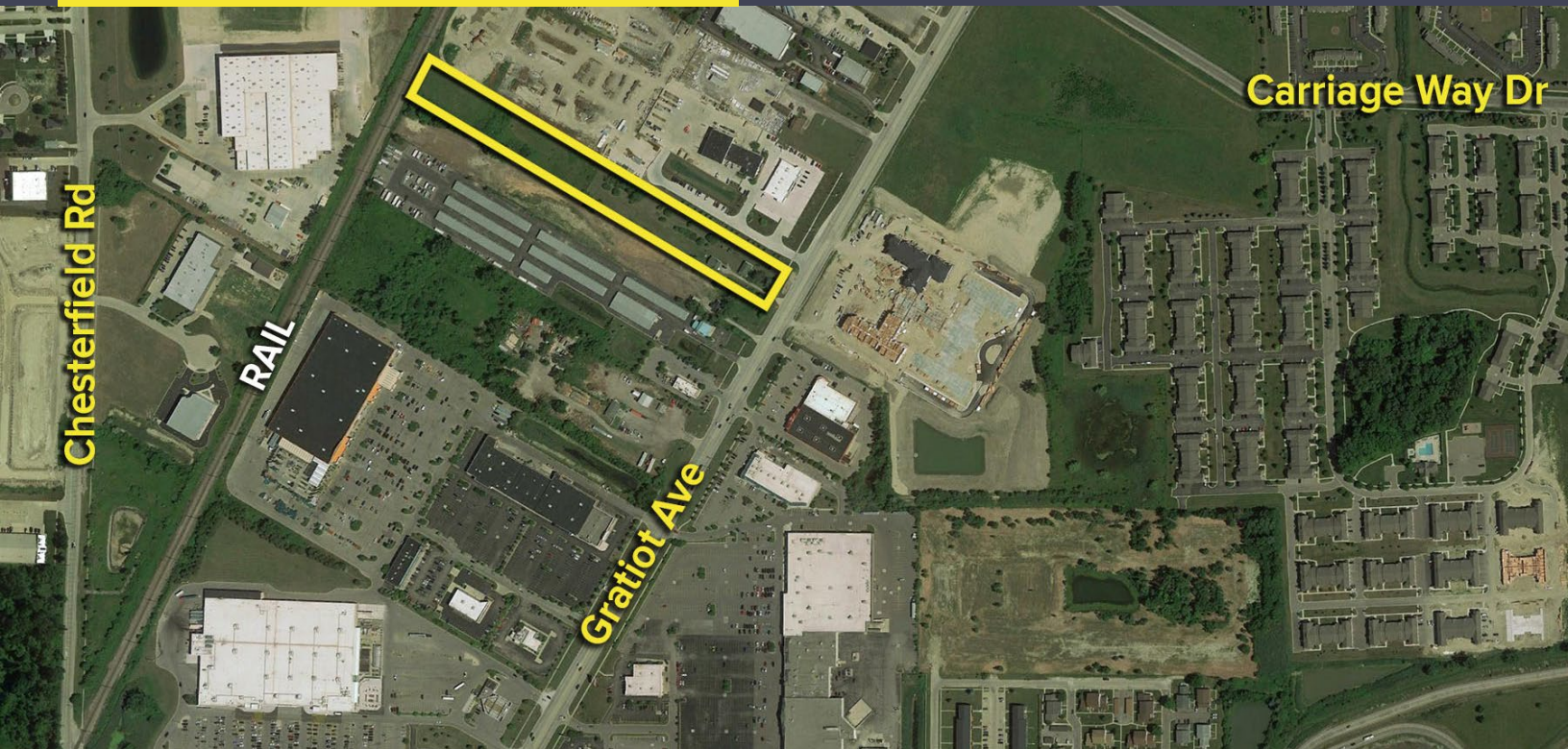


51705 GRATIOT AVENUE
CHESTERFIELD TWP., MICHIGAN

VACANT LAND FOR SALE
5 Acres Available



**SIGNATURE
ASSOCIATES**
KNOW SIGNATURE | KNOW RESULTS



PROPERTY FEATURES

- 5 acres available
- Zoned M2. General Manufacturing
- All utilities available at site
- Industrial land or possible retail/commercial
- Adjacent site is also available for a total of 5-10 acres.
- Fronts on Gratiot
- Sale price: \$499,900 (\$99,980/acre)



For more information, please contact:

PAUL SAAD

(248) 359 0652

psaad@signatureassociates.com

PETER VANDERKAAY

(248) 359 3837

pvanderkaay@signatureassociates.com

SIGNATURE ASSOCIATES

One Towne Square, Suite 1200

Southfield, MI 48076

www.signatureassociates.com