

# OFFICE SPACE FOR LEASE

14201 Kentwood Blvd | Victorville, CA



## PROPERTY OVERVIEW

- ▶ ±1,142 SF Quality Office Space Available
- ▶ Prime Office Location
- ▶ Easy Access to Interstate 15
- ▶ Located in the Victorville Civic Center Area
- ▶ Close Proximity to Victorville Court House and the City Hall
- ▶ Close to Restaurants and Shopping



**LEASE RATE \$1.25 PSF|MG**



RONALD J. BARBIERI  
760.684.8048  
rb@cbcdesert.com  
BRE 00344191



NICK DICOSOLA  
760.684.8070  
ND@cbcdesert.com  
BRE 00875137



STEVEN THOMPSON  
760.684-8065  
Steven.Thompson@CBCinland.com  
BRE 01963261

# FOR LEASE

14201 Kentwood Blvd | Victorville, CA



- Tenant will be able to place a sign on building façade fronting on Kentwood Blvd.
- All Public Areas of the office building including bathrooms and lobby have been remodeled.
- Office Suite has both private offices and a common work area. Additionally, a partitioning is possible.
- An allowance for tenant improvements may be available.
- The office building is less than 3 miles north of the regional mall for the High Desert.
- It is also 4 miles north of Restaurant Row adjacent to the I-15 Freeway
- There are a substantial number of professional service companies in the immediate area.



RONALD J. BARBIERI  
760.684.8048  
rb@cbcdesert.com  
BRE 00344191



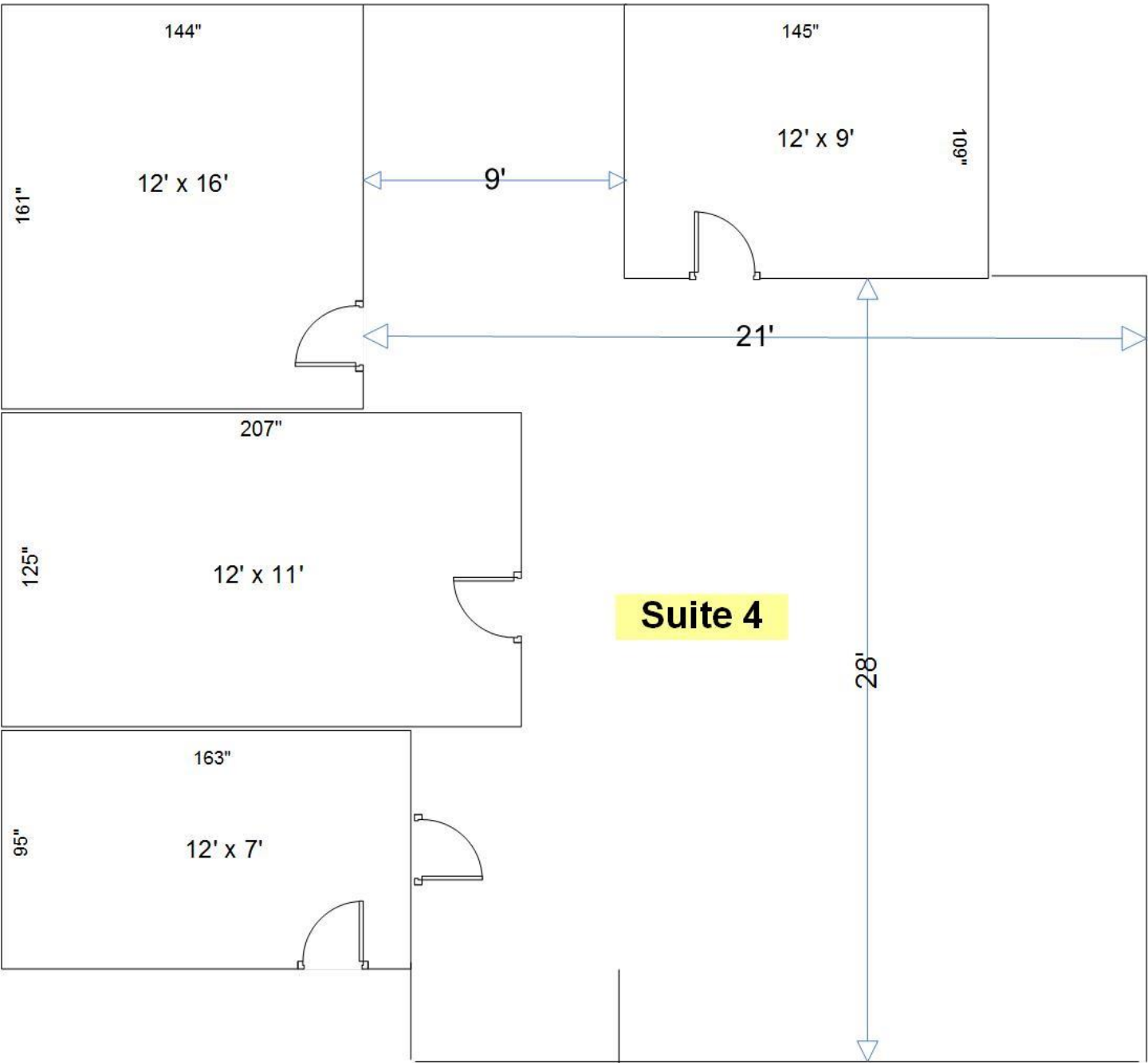
NICK DICOSOLA  
760.684.8070  
ND@cbcdesert.com  
BRE 00875137



STEVEN THOMPSON  
760.684-8065  
Steven.Thompson@CBCinland.com  
BRE 01963261

# FOR LEASE

14201 Kentwood Blvd | Victorville, CA



PLOT PLAN SCALE: 1" = 10' 0"



RONALD J. BARBIERI  
760.684.8048  
rb@cbcdesert.com  
BRE 00344191



NICK DICOSOLA  
760.684.8070  
ND@cbcdesert.com  
BRE 00875137



STEVEN THOMPSON  
760.684-8065  
Steven.Thompson@CBCinland.com  
BRE 01963261

# FOR LEASE

14201 Kentwood Blvd | Victorville, CA



RONALD J. BARBIERI  
760.684.8048  
rb@cbcdesert.com  
BRE 00344191



NICK DICOSOLA  
760.684.8070  
ND@cbcdesert.com  
BRE 00875137



STEVEN THOMPSON  
760.684-8065  
Steven.Thompson@CBCinland.com  
BRE 01963261