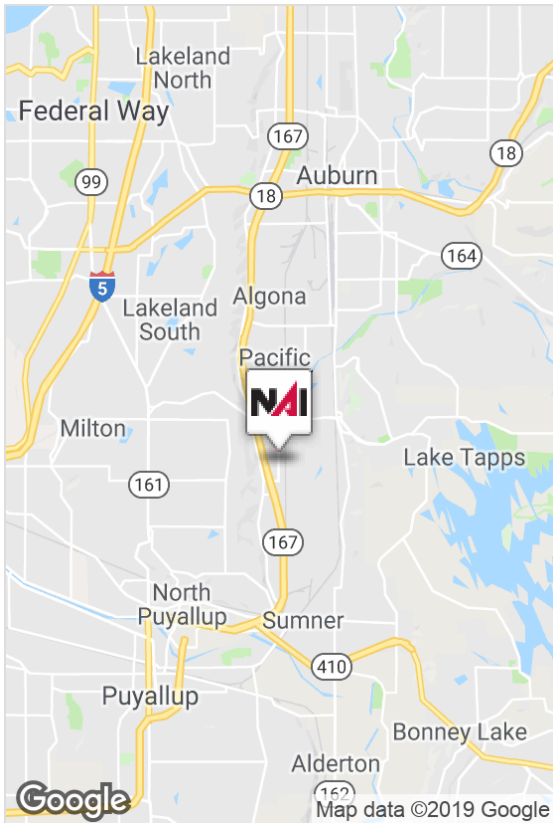


For Lease

# 3.37 Acre Yard Available



Sumner, WA 98390

- 3.37 acre parcel
- Fully developed paved yard, underground retention system, fencing & landscaping
- Zoned: M-1, City of Sumner
- One block from Highway 167 / 24th Street E Interchange
- Excellent site for truck/trailer parking
- \$0.18/SF + NNN

**\*Available for occupancy estimated to be April 2019**

For more information:

**Bruce Goldstein**

+1 425 586 5632 • [bgoldstein@nai-psp.com](mailto:bgoldstein@nai-psp.com)



BELLEVUE | SEATTLE | TACOMA

600 108th Avenue NE, Suite 340

Bellevue, WA 98004

+1 425 586 5600

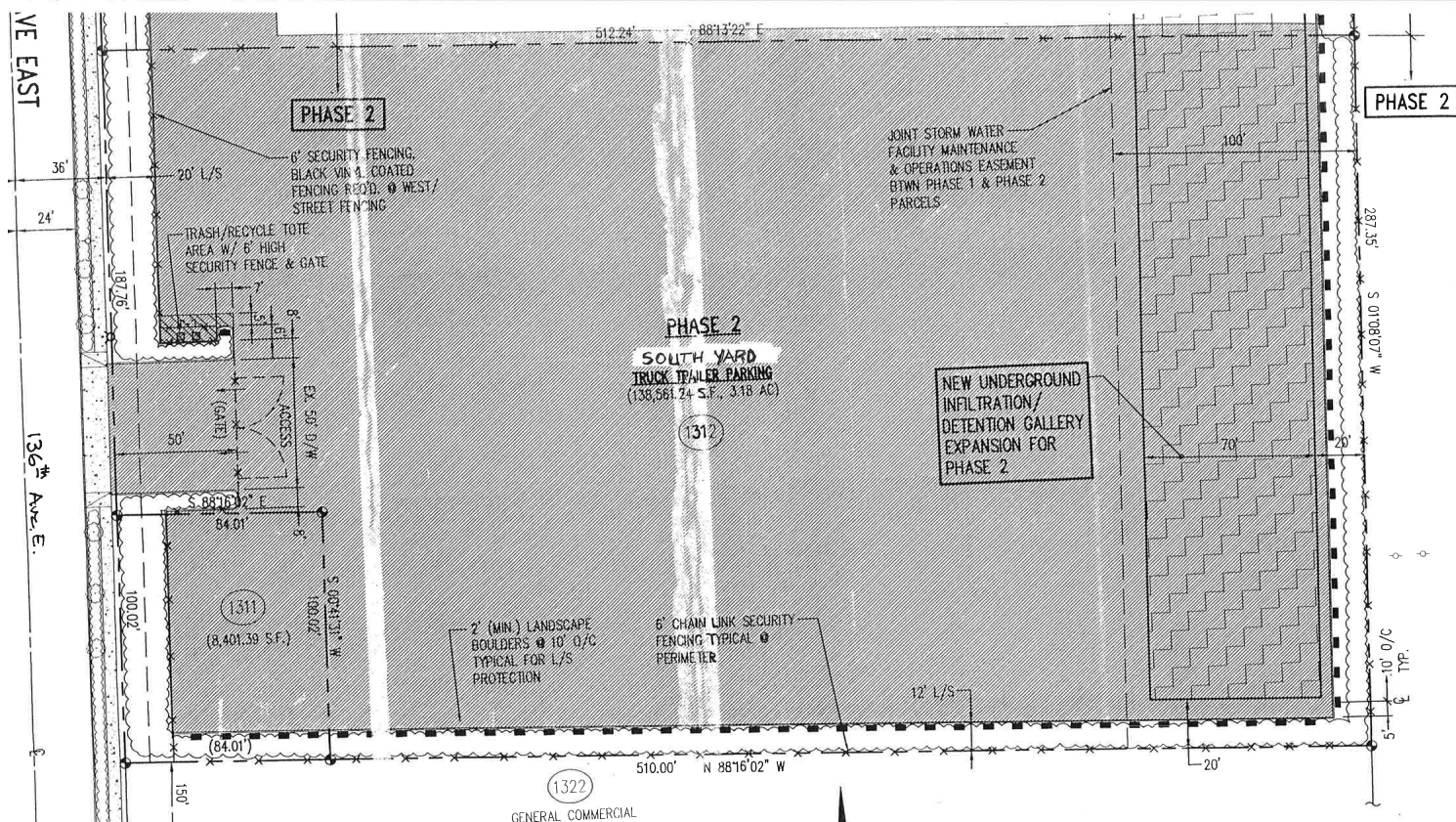
[nai-psp.com](http://nai-psp.com)

THE INFORMATION CONTAINED HEREIN HAS BEEN GIVEN TO US BY THE OWNER OF THE PROPERTY OR OTHER SOURCES WE DEEM RELIABLE, WE HAVE NO REASON TO DOUBT ITS ACCURACY, BUT WE DO NOT GUARANTEE IT. ALL INFORMATION SHOULD BE VERIFIED PRIOR TO PURCHASE OR LEASE.



For Lease

# 1905 136th Ave E



BELLEVUE | SEATTLE | TACOMA

600 108th Avenue NE, Suite 340

Bellevue, WA 98004

+1 425 586 5600

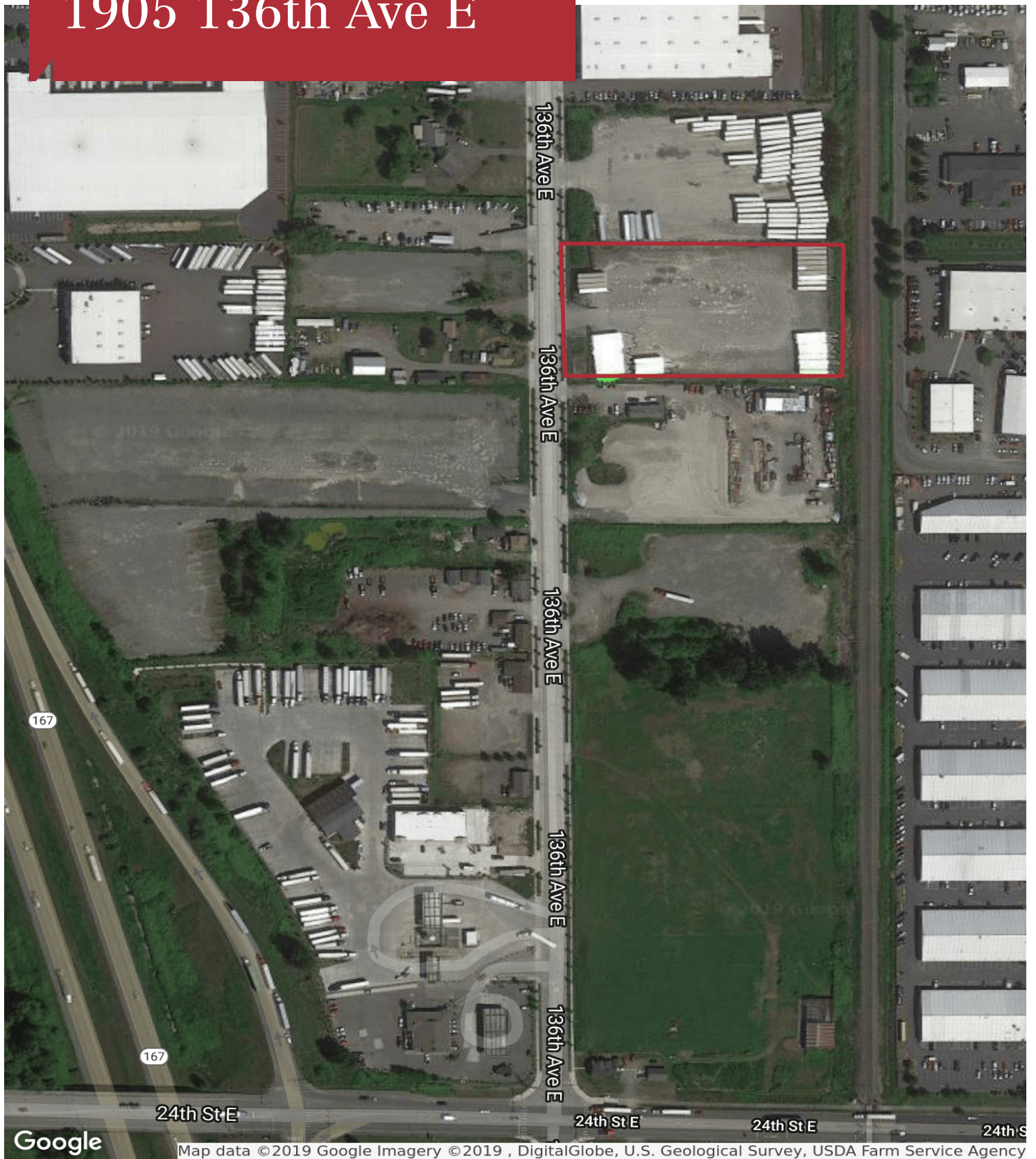
[nai-psp.com](http://nai-psp.com)

THE INFORMATION CONTAINED HEREIN HAS BEEN GIVEN TO US BY THE OWNER OF THE PROPERTY OR OTHER SOURCES WE DEEM RELIABLE, WE HAVE NO REASON TO DOUBT ITS ACCURACY, BUT WE DO NOT GUARANTEE IT. ALL INFORMATION SHOULD BE VERIFIED PRIOR TO PURCHASE OR LEASE.



For Lease

# 1905 136th Ave E



BELLEVUE | SEATTLE | TACOMA

600 108th Avenue NE, Suite 340  
Bellevue, WA 98004  
+1 425 586 5600  
[nai-psp.com](http://nai-psp.com)

THE INFORMATION CONTAINED HEREIN HAS BEEN GIVEN TO US BY THE OWNER OF THE PROPERTY OR OTHER SOURCES WE DEEM RELIABLE, WE HAVE NO REASON TO DOUBT ITS ACCURACY, BUT WE DO NOT GUARANTEE IT. ALL INFORMATION SHOULD BE VERIFIED PRIOR TO PURCHASE OR LEASE.