

OFFICE FOR SALE

850 Wade Hampton Blvd. Greenville, SC 29609

NAI Earle Furman

\$1,025,000



Ideal for Owner Occupant Investment

Property Features

- Convenient location on Wade Hampton Blvd less than a mile from Downtown Greenville
- ±10,501 SF of fully renovated space situated on 0.98 acres
- Lease information available upon request
- Greenville County TMS #0189020205100 & 0189020205104
- Serene park-like setting overlooking lake in the rear of property
- Recent improvements include: new roof, all new extensive paint, new retaining wall, select interior improvements, all new steel doors, etc.
- Six (6) tenants - most long term occupants
- Owner is occupying ±4,425 SF and would relocate
- Ideal for owner occupant and additional tenants subsidizing mortgage payments
- ±59 parking spaces
- Sale Price: \$1,025,000 (\$97.60/SF)
- Contact Agents for Full Offering Memorandum
- DRONE FOOTAGE: <https://vimeo.com/470584659>



John Gray, Jr., CCIM

O: +1 864 232 9040
C: +1 864 414 1440

jgray@naiearlefurman.com



Michael Roth

O: +1 864 232 9040 x5946

mroth@naiearlefurman.com

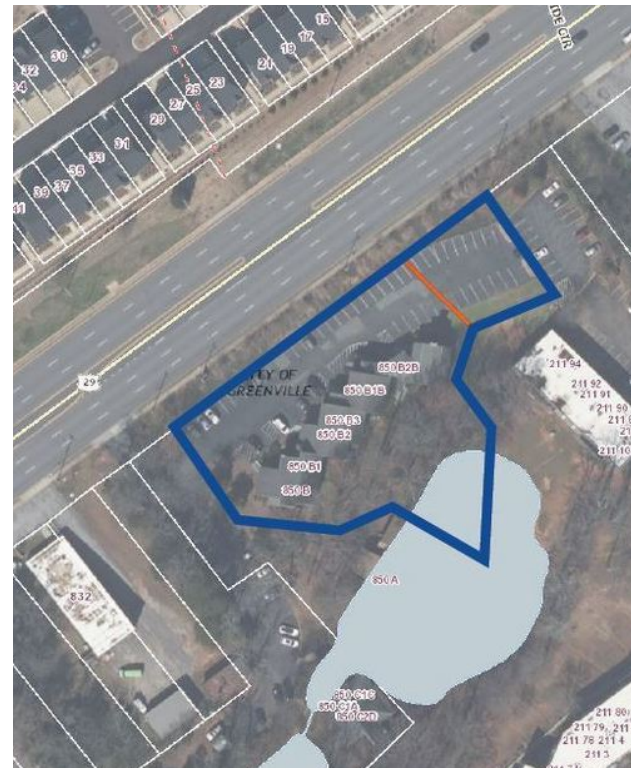
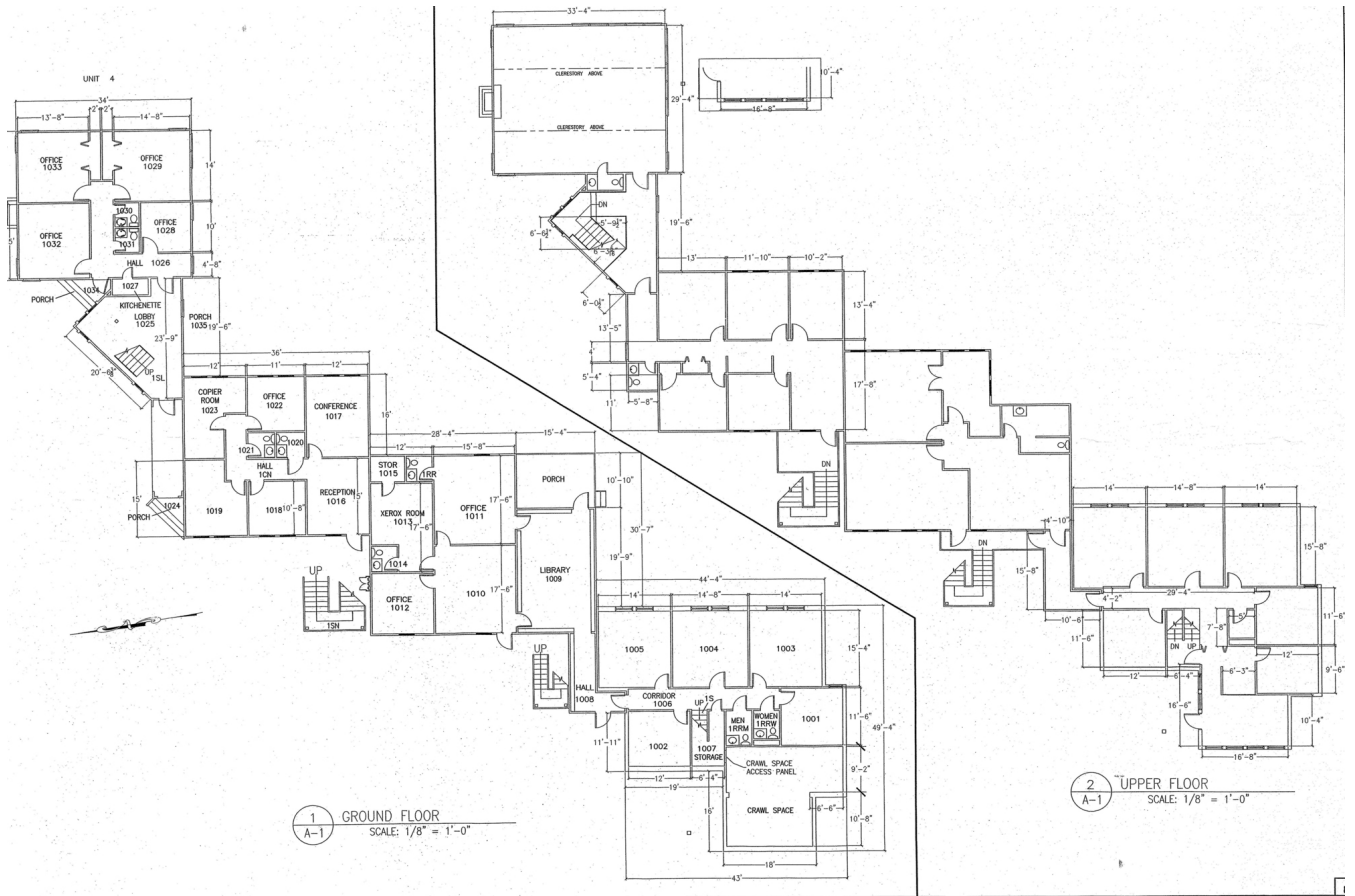
No Warranty Or Representation, Express Or Implied, Is Made As To The Accuracy Of The Information Contained Herein, And The Same Is Submitted Subject To Errors, Omissions, Change Of Price, Rental Or Other Conditions, Prior Sale, Lease Or Financing, Or Withdrawal Without Notice, And Of Any Special Listing Conditions Imposed By Our Principals. No Warranties Or Rep- resentations Are Made As To The Condition Of The Property Or Any Hazards Contained Therein Are Any To Be Implied.



101 E Washington St
Greenville, SC 29601
naiearlefurman.com

Floor Plan

850 Wade Hampton Blvd. Greenville, SC 29609



✉ **John Gray, Jr., CCIM**
O: +1 864 232 9040
C: +1 864 414 1440
jgray@naiearlefurman.com

✉ **Michael Roth**
O: +1 864 232 9040 x5946
mroth@naiearlefurman.com

No Warranty Or Representation, Express Or Implied, Is Made As To The Accuracy Of The Information Contained Herein, And The Same Is Submitted Subject To Errors, Omissions, Change Of Price, Rental Or Other Conditions, Prior Sale, Lease Or Financing, Or Withdrawal Without Notice, And Of Any Special Listing Conditions Imposed By Our Principals. No Warranties Or Representations Are Made As To The Condition Of The Property Or Any Hazards Contained Therein. Any To Be Implied.

NAI Earle Furman

Property Photos

850 Wade Hampton Blvd. Greenville, SC 29609



✉ **John Gray, Jr., CCIM**
O: +1 864 232 9040
C: +1 864 414 1440
jgray@naiearlefurman.com

✉ **Michael Roth**
O: +1 864 232 9040 x5946
mroth@naiearlefurman.com

No Warranty Or Representation, Express Or Implied, Is Made As To The Accuracy Of The Information Contained Herein, And The Same Is Submitted Subject To Errors, Omissions, Change Of Price, Rental Or Other Conditions, Prior Sale, Lease Or Financing, Or Withdrawal Without Notice, And Of Any Special Listing Conditions Imposed By Our Principals. No Warranties Or Representations Are Made As To The Condition Of The Property Or Any Hazards Contained Therein As Any To Be Implied.

NAI Earle Furman