



For Lease

±26,735 SF

Office/Warehouse



# 739 Old Clemson Road

Columbia, South Carolina

For more information:

**Lee Bussell, Jr.**

+1 803 744 9865  
lbussell@naiavant.com

**John Gregory, PE**

+1 803 744 9896  
jgregory@naiavant.com

THE INFORMATION CONTAINED HEREIN HAS BEEN GIVEN TO US BY THE OWNER OF THE PROPERTY OR OTHER SOURCES WE DEEM RELIABLE. WE HAVE NO REASON TO DOUBT ITS ACCURACY, BUT WE DO NOT GUARANTEE IT. ALL INFORMATION SHOULD BE VERIFIED PRIOR TO PURCHASE OR LEASE.

807 Gervais Street, Suite 301  
Columbia, South Carolina 29201  
+1 803.254.0100  
[www.naiavant.com](http://www.naiavant.com)

## Executive Summary

739 Old Clemson Road - Columbia, South Carolina

### Building Information

- Location: Northeast Columbia
- Available: ±25,735 SF
- Office: ±5,959 SF
- Warehouse: ±19,776 SF
- Eave Height: 14'
- Center Height: 16'
- Electric: 3 Phase / 208 Volt Power
- Sprinkler: 100%
- Parking Spaces: 25

### Loading

- Docks: 1, with leveler
- Drive in Doors: 5 total

### Site Information

- Zoning: M1, Richland County
- Site Size: ±2.5 AC
- Interstate Distances: I-20 ±2.5 Miles  
I-77 ±7 Miles

### Pricing:

- Lease Rate: \$4.25 NNN

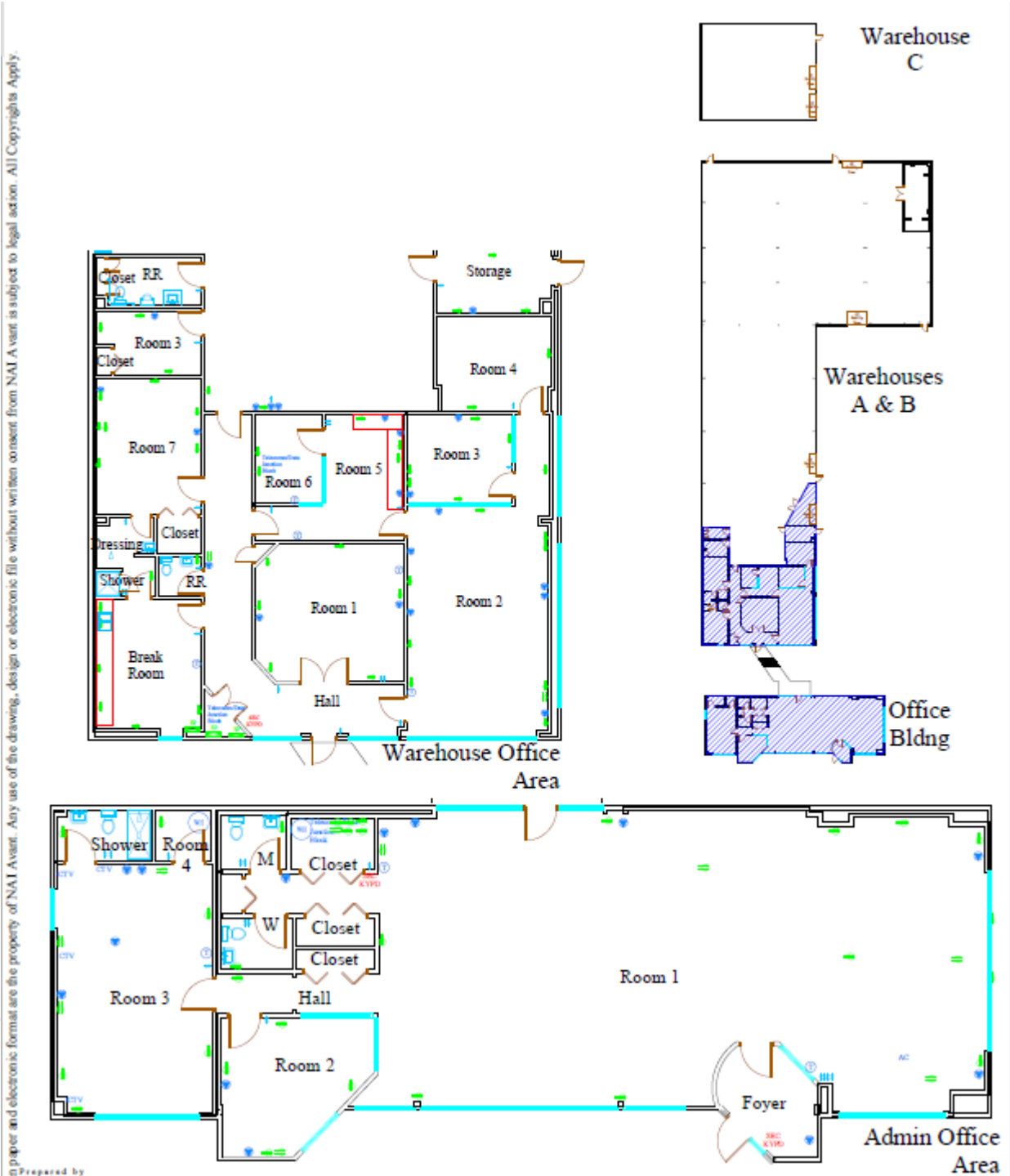
## Property Pictures

739 Old Clemson Road - Columbia, South Carolina



## Floor Plan

739 Old Clemson Road - Columbia, South Carolina



This paper and electronic format are the property of NAI Avant. Any use of the drawing, design or electronic file without written consent from NAI Avant is subject to legal action. All Copyrights Apply.

## Aerial Map

739 Old Clemson Road - Columbia, South Carolina

