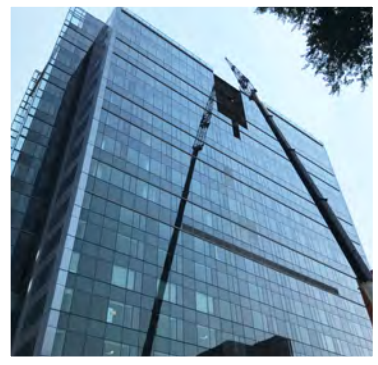


1455 SW BROADWAY

BT

BROADWAY
TOWER



16

14

Now Open

Only 3 spaces left!

Leasing Information

Kevin Joshi

Senior Vice President, Partner

503.221.2282

kjoshi@kiddermathews.com

1455broadway.com

kiddermathews.com

All contents herein are subject to change based on final approved plans by City of Portland. This information supplied herein is from sources we deem reliable. It is provided without any representation, warranty or guarantee, expressed or implied as to its accuracy. Prospective Buyer or Tenant should conduct an independent investigation and verification of all matters deemed to be material, including, but not limited to, statements of income and expenses. Consult your attorney, accountant, or other professional advisor.



Portland's newest skyrise office tower

Premier office space with mountain
and river views

11 floors of office above an 8-floor
luxury hotel

Adjacent to retail, restaurants, and
other amenities

Four floors of lower level parking
(1/1,000)

Pursuing LEED Gold

Office rates: \$31.50-\$33.50 NNN

Opened: November 2018



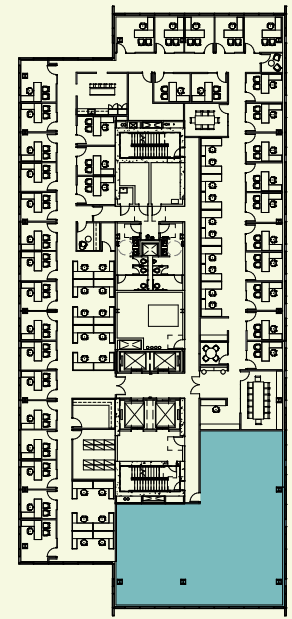
Convenient access and great on-site amenities

Extensive bike storage with showers/lockers and
conference rooms in addition to a high-end downtown
hotel with a bar and restaurant.

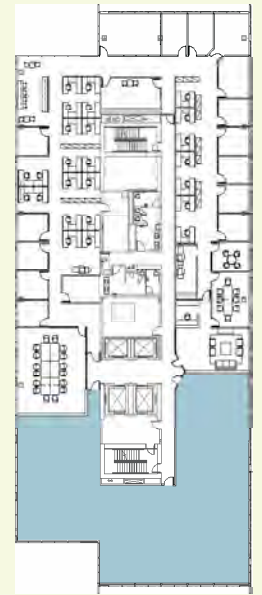
Broadway Tower is a quick walk to nearby hotels,
restaurants, mass transit, museums, art district,
Portland State University and South Park Blocks.



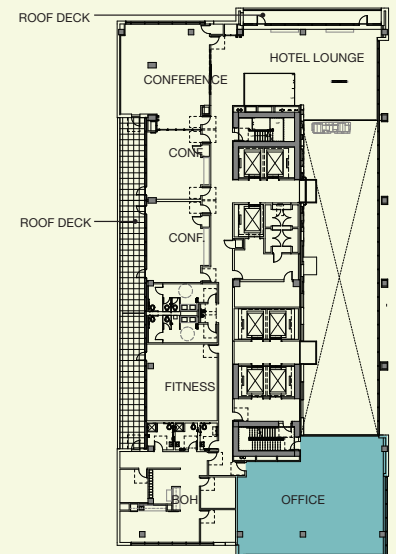
Floor	RSF	Rent
19	9,128	Leased
18	10,296	Leased
17	17,106	Leased
16	3,245	\$33.50 NNN
15	17,106	Leased
14	5,509	\$32.50 NNN
13	17,106	Leased
12	17,106	Leased
11	17,106	Leased
10	17,106	Leased
9	17,106	Leased
8	HOTEL	
7		
6		
5		
4		
3		
2	1,721	\$31.50 NNN
1	LOBBY	
Ground retail level	2,113	Leased



Office
Level 16



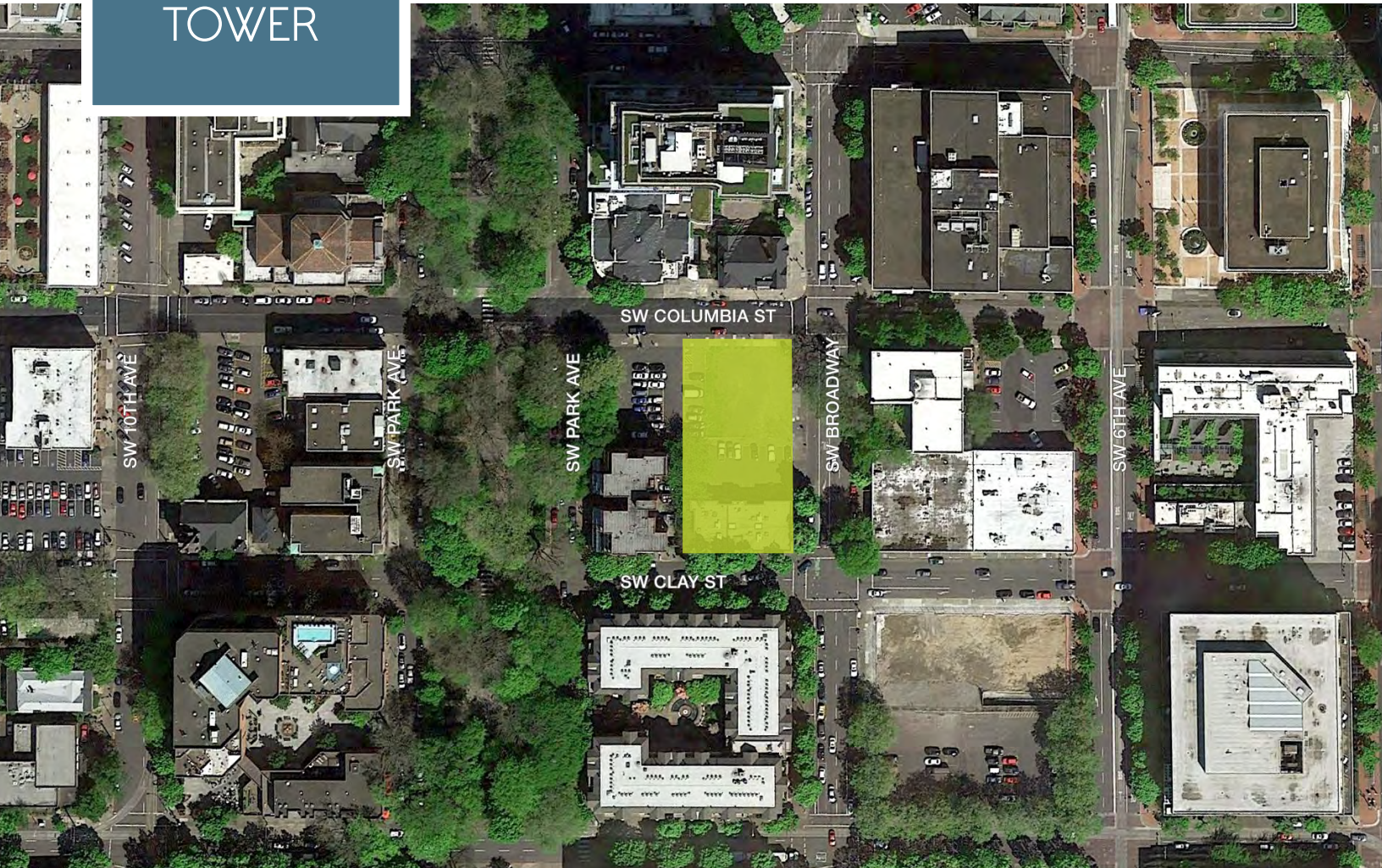
Office
Levels 14



Office
Level 2

BT

BROADWAY
TOWER



Leasing Information

Kevin Joshi
Senior Vice President, Partner
503.221.2282
kjoshi@kiddermathews.com

1455broadway.com
kiddermathews.com

All contents herein are subject to change based on final approved plans by City of Portland. This information supplied herein is from sources we deem reliable. It is provided without any representation, warranty or guarantee, expressed or implied as to its accuracy. Prospective Buyer or Tenant should conduct an independent investigation and verification of all matters deemed to be material, including, but not limited to, statements of income and expenses. Consult your attorney, accountant, or other professional advisor.