

1685 Fleetwood Drive, Elgin IL.

± 15,200 - 32,750 SF FOR SALE OR LEASE



Truck Maintenance Facility

SPECIFICATIONS

SIZE: 15,200 SF- 32,750 SF

Office: 2,155 SF – 4,310 SF

LAND AREA: 1.8 Acre

ZONING: General Industrial

CEILING HEIGHT: 16' Clear

LOADING: 5 Drive in Doors (12'x14')/ 1 Ext Dock

POWER: 400A/480V 3-phase

Tractor Repair Stations: 12 positions

Trailer Repair Stations: 3

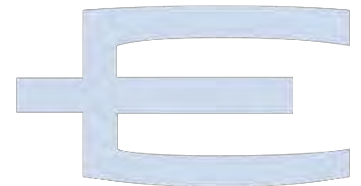
RE Taxes: \$1.06 PSF (Paid 2019)

LEASE RATE: \$8.00 PSF MG

SALE PRICE: \$2,300,000

- Outside Storage
- Trench Drains and floor drains throughout
- Triple Catch Basin
- Electric Gated/Fenced/Lit Lot
- 21 Trailer positions
- Immediate Access to Route 20
- Completely remodeled in 2018

Contact:



Mike DeSerto
224-588-3026
mdeserto@entrecommercial.com

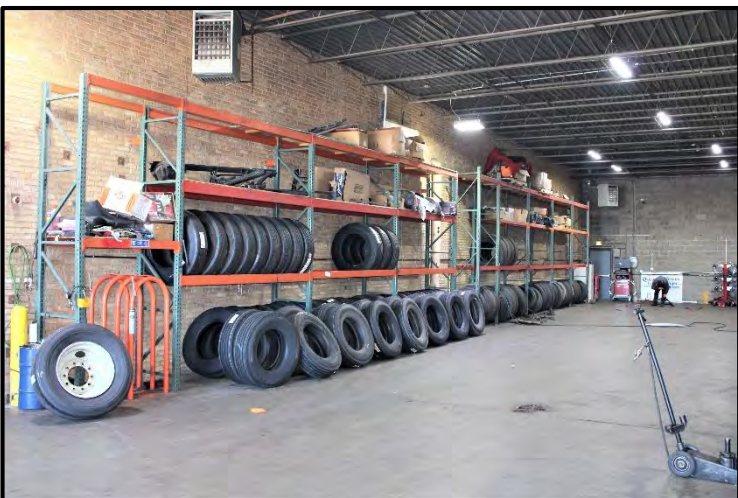
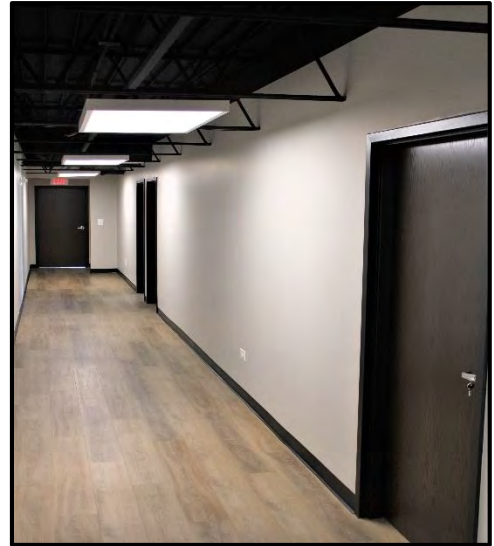
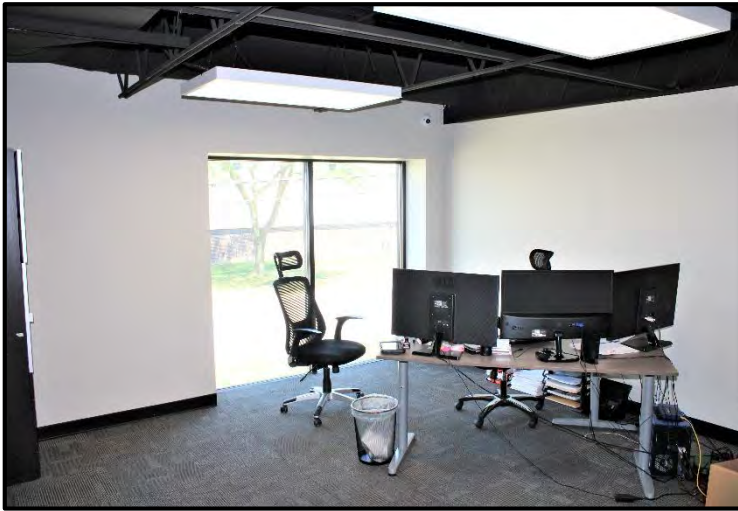
Cory Kay
224-532-2497
ckay@entrecommercial.com

www.entrecommercial.com

3550 Salt Creek Lane, Suite 104, Arlington Heights, IL. 60005

ENTRE
Commercial Realty LLC

1685 Fleetwood Drive, Elgin IL.



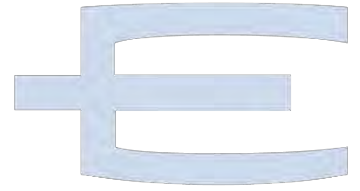
www.entrecommercial.com

3550 Salt Creek Lane, Suite 104, Arlington Heights, IL. 60005

ENTRE
Commercial Realty LLC

1685 Fleetwood Drive, Elgin IL.

± 15,200 - 32,750 SF FOR SALE OR LEASE



Contact:

Mike DeSerto
 224-588-3026
 mdeserto@entrecmercial.com

Cory Kay
 224-532-2497
 ckay@entrecmercial.com

www.entrecmercial.com

3550 Salt Creek Lane, Suite 104, Arlington Heights, IL. 60005

