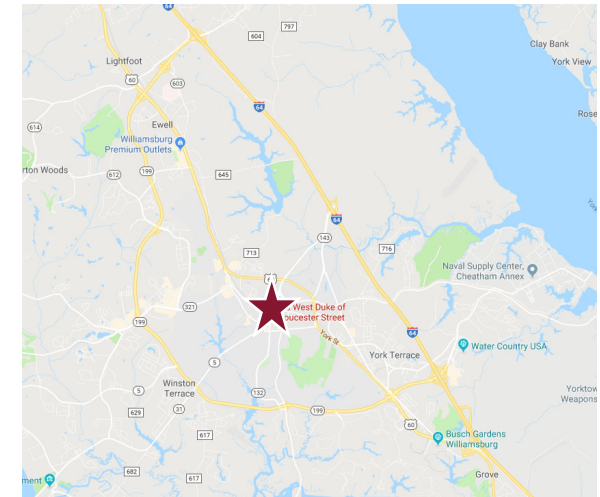




Property Features

- Available Space:
 - Suite 215: 397 RSF (\$695/month)
 - Suite 218: 879 RSF (\$1,540/month)
 - Suite 218-A: 271 RSF (\$485/month)
- Utilities included
- Enjoy doing business in historical Colonial Williamsburg's Merchants Square
- Located in the heart of Williamsburg with restaurants, banks and the College of William & Mary



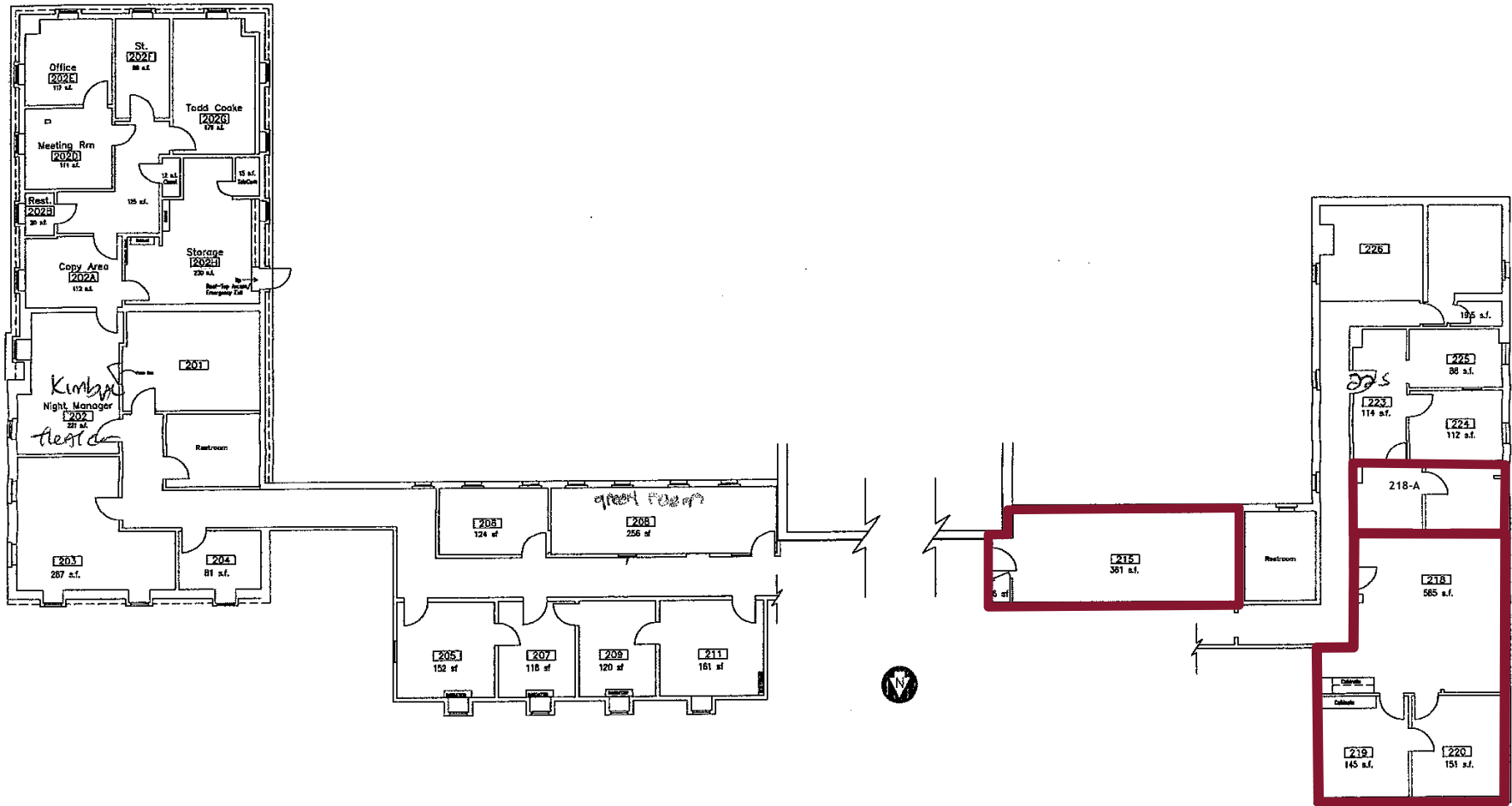
For more information, contact:

DAWN GRIGGS, SIOR
First Vice President
757 873 1210
dawn.griggs@thalhimer.com

DREW HAYNIE
First Vice President
757 873 9004
drew.haynie@thalhimer.com

One BayPort Way, Suite 100
Newport News, VA 23606
www.thalhimer.com

SECOND FLOOR



For more information, contact:

DAWN GRIGGS, SIOR
First Vice President
757 873 1210
dawn.griggs@thalhimer.com

DREW HAYNIE
First Vice President
757 873 9004
drew.haynie@thalhimer.com

One BayPort Way, Suite 100
Newport News, VA 23606
www.thalhimer.com