

PARK PLACE NORTH

FOR SALE or LEASE

Office Condo 1,478 Square Feet

950 Boardwalk Street, Suite 303
San Marcos, California 92078



- For Sale \$425,000
- 1,478 Rentable Square Feet
- 1,274 Usable Square Feet
- Elevator
- Kitchen w/Refrigerator
- 3 Offices, Reception, Open Area,
- High End Furniture Included
- Top Floor with premium views
- For Lease \$1.80 +Utilities & Janitorial
- Close to Highway 78 & access via Las Posas
- Walking Distance to Shops, Restaurant Row & Theater
- Lots of glass and natural light
- Ample surface parking
- Lush Landscaping
- Back door exit.



C. E. SANDERS & COMPANY, INC.
COMMERCIAL REAL ESTATE SERVICES

CRAIG E. SANDERS
858-395-6438 (M)
csanders@cesandcompany.com
www.cesandcompany.com

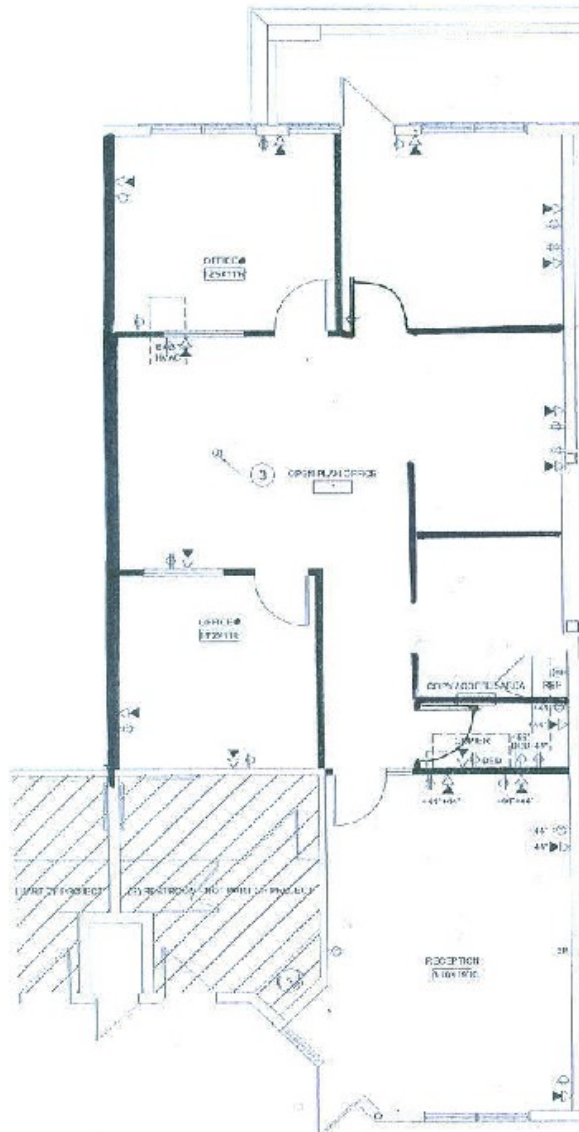
PARK PLACE NORTH

FOR SALE or LEASE

\$425,000 or \$1.80 + Util.

950 Boardwalk Street, Suite 303
San Marcos, California 92078

Available:
1,478 Rentable and 1,274 Usable Square Feet



C. E. SANDERS & COMPANY, INC.
COMMERCIAL REAL ESTATE SERVICES

CRAIG E. SANDERS
858-395-6438 (M)
csanders@cesandcompany.com
www.cesandcompany.com

PARK PLACE NORTH

FOR SALE or LEASE

\$425,000 or \$1.80 + Util.

950 Boardwalk Street, Suite 303
San Marcos, California 92078



C. E. SANDERS & COMPANY, INC.
COMMERCIAL REAL ESTATE SERVICES

CRAIG E. SANDERS
858-395-6438 (M)
csanders@cesandcompany.com
www.cesandcompany.com