

# 4200 Wisconsin Avenue, NW



Floor	Space Available (SF)	Rent (FS PSF)	Notes
5	1,462	\$44.00	Top floor, elevator lobby entry, nice view, great small suite
2	2,699-5,806	\$38.50	Cost effective office space
2	2,322	\$39.50	2 Sides of Glass

## Building

- Garage and Surface Parking
- Bourbon Coffee
- UPS Store
- Surfside coming soon

## Neighborhood

- Tenley/AU Metro - Redline
- CAVA
- Chipotle
- Nando's

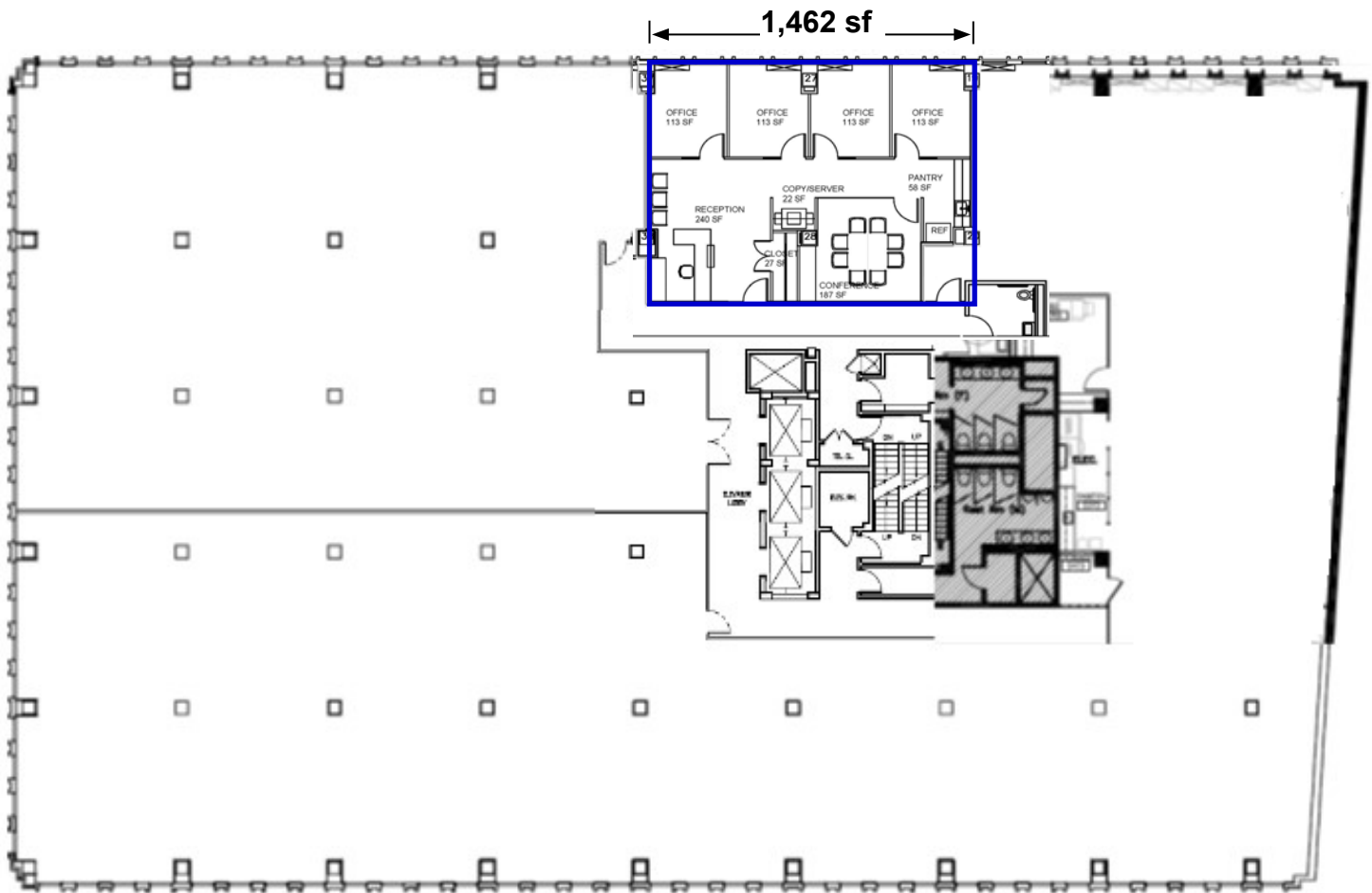
### Leasing Information:

John Duffy      202.682.9114  
 Wes Herr        202.470.2820  
 Paul DeFilippes   202.682.9113

jduffy@summitcre.com  
 wherr@summitcre.com  
 paul@summitcre.com

## 5th Floor

Hypothetical plan - Space is in shell condition



**Wisconsin Avenue**

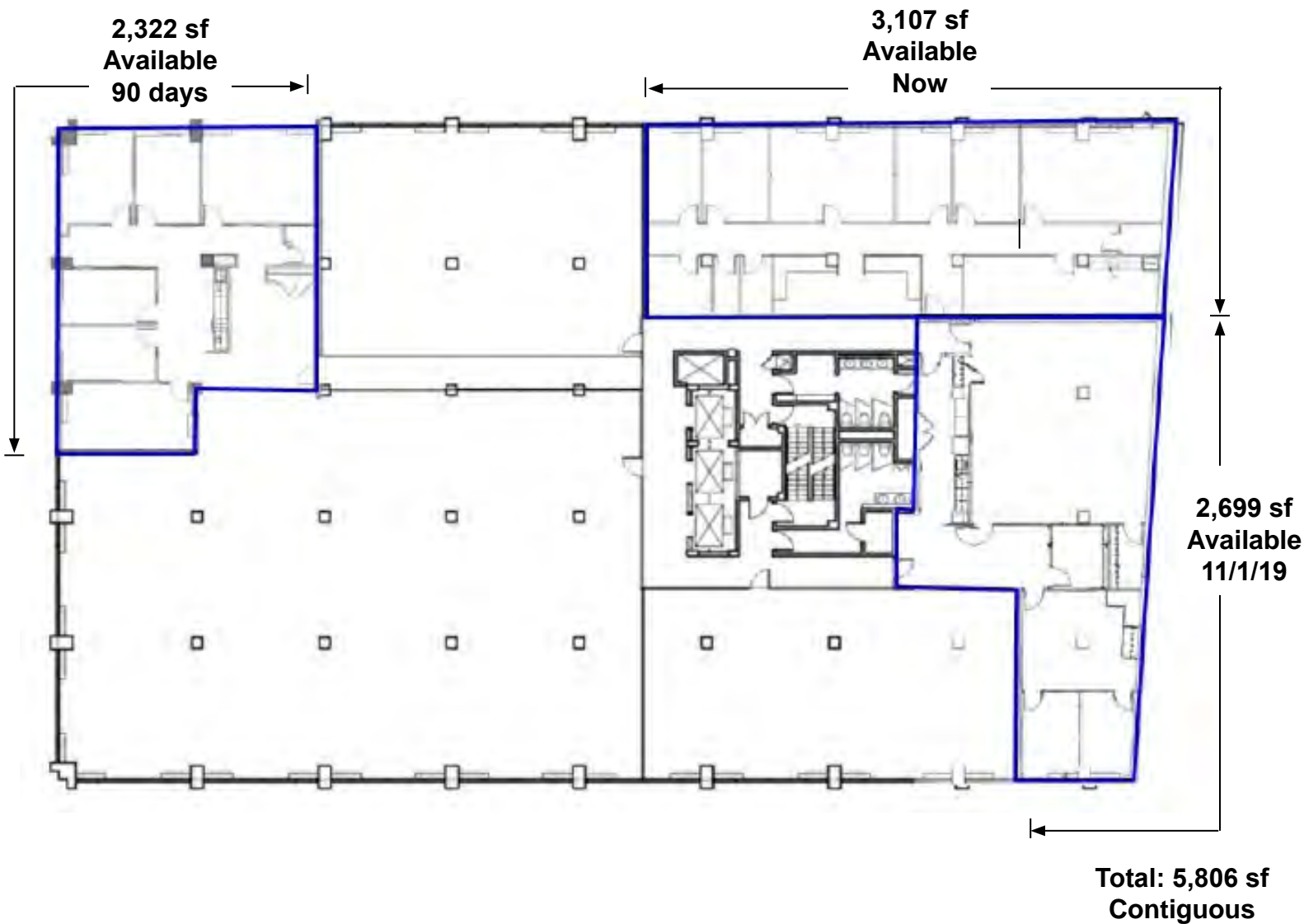
**Leasing Information:**

**John Duffy**  
**Wes Herr**  
**Paul DeFilippes**

**202.682.9114**  
**202.470.2820**  
**202.682.9113**

**[jduffy@summitcre.com](mailto:jduffy@summitcre.com)**  
**[wherr@summitcre.com](mailto:wherr@summitcre.com)**  
**[paul@summitcre.com](mailto:paul@summitcre.com)**

## 2nd Floor



**Wisconsin Avenue**

**Leasing Information:**

John Duffy  
Wes Herr  
Paul DeFilippes

202.682.9114  
202.470.2820  
202.682.9113

[jduffy@summitcre.com](mailto:jduffy@summitcre.com)  
[wherr@summitcre.com](mailto:wherr@summitcre.com)  
[paul@summitcre.com](mailto:paul@summitcre.com)





**Leasing Information:**

**John Duffy**  
**Wes Herr**  
**Paul DeFilippes**

**202.682.9114**  
**202.470.2820**  
**202.682.9113**

**[jduffy@summitcre.com](mailto:jduffy@summitcre.com)**  
**[wherr@summitcre.com](mailto:wherr@summitcre.com)**  
**[paul@summitcre.com](mailto:paul@summitcre.com)**