

66 BOVET

66 BOVET ROAD, SAN MATEO, CA

66

Anderson & Greenway LLP
Cheney & Pratt, LLP
DZH Phillips LLP
San Mateo Surgery Center

**Kidder
Mathews**

JAMES LEES
650.769.3520
james.lees@kidder.com
LIC #00683028

SANDY RODRIGUEZ
650.769.3528
sandy.rodriguez@kidder.com
LIC #01249030

This information supplied herein is from sources we deem reliable. It is provided without any representation, warranty, or guarantee, expressed or implied as to its accuracy. Prospective Buyer or Tenant should conduct an independent investigation and verification of all matters deemed to be material, including, but not limited to, statements of income and expenses. Consult your attorney, accountant, or other professional advisor.

FOR LEASE

66 Bovet

66 BOVET ROAD, SAN MATEO, CA



The building exterior was renovated with new hardscape and landscape, paint and stonework, a new monument sign, exterior lighting, and a deck with seating and wi-fi. The building lobby was completely renovated with new flooring, ceiling, lighting, new electronic tenant directory, seating, water feature and artwork.

The final touch was the upgrades to the corridors, including new lighting, carpet, paint, doors and signage.

JAMES LEES
650.769.3520
james.lees@kidder.com
LIC #00683028

SANDY RODRIGUEZ
650.769.3528
sandy.rodriguez@kidder.com
LIC #01249030

KIDDER.COM

This information supplied herein is from sources we deem reliable. It is provided without any representation, warranty, or guarantee, expressed or implied as to its accuracy. Prospective Buyer or Tenant should conduct an independent investigation and verification of all matters deemed to be material, including, but not limited to, statements of income and expenses. Consult your attorney, accountant, or other professional advisor.



FOR LEASE

66 Bovet

66 BOVET ROAD, SAN MATEO, CA



66 Bovet is located in the heart of the San Francisco Peninsula office market, in a highly desirable area known as the "92/101 corridor". Companies located here have the ability to attract and retain employees from a wide labor pool. This location provides immediate access to Highway 101 and Interstate 280 via Highway 92, which provides access from the East Bay (San Mateo Bridge) and the coast. San Francisco International Airport is a short 15 minute drive away. The Hayward Park CalTrain station is within easy walking distance. Numerous dining and other amenities are within walking distance or a short drive.

JAMES LEES
650.769.3520
james.lees@kidder.com
LIC #00683028

SANDY RODRIGUEZ
650.769.3528
sandy.rodriguez@kidder.com
LIC #01249030

KIDDER.COM

This information supplied herein is from sources we deem reliable. It is provided without any representation, warranty, or guarantee, expressed or implied as to its accuracy. Prospective Buyer or Tenant should conduct an independent investigation and verification of all matters deemed to be material, including, but not limited to, statements of income and expenses. Consult your attorney, accountant, or other professional advisor.



FOR LEASE

66 Bovet

66 BOVET ROAD, SAN MATEO, CA

AVAILABILITIES

Suite	Size	Rate	Available	Description
100	±8,139 RSF	\$4.50 FS	Now	Plug 'n Play Suite! Updated suite with double door entry, 15 windowline private offices, large conference room, 2 interior offices or small conference rooms, kitchen, team room, storage and some open area. Fully furnished and wired (CAT 6), server rack, patch panel, move & cool unit, refrigerator, microwave, dishwasher and disposal all included
320	±2,005 RSF	\$4.50 FS	Now	2 private offices, conference room, kitchen, storage and open area
380	±2,413 RSF	\$4.50 FS	Now	Corner suite with 6 private offices/conference rooms, a coffee bar and open area



KIDDER.COM

This information supplied herein is from sources we deem reliable. It is provided without any representation, warranty, or guarantee, expressed or implied as to its accuracy. Prospective Buyer or Tenant should conduct an independent investigation and verification of all matters deemed to be material, including, but not limited to, statements of income and expenses. Consult your attorney, accountant, or other professional advisor.

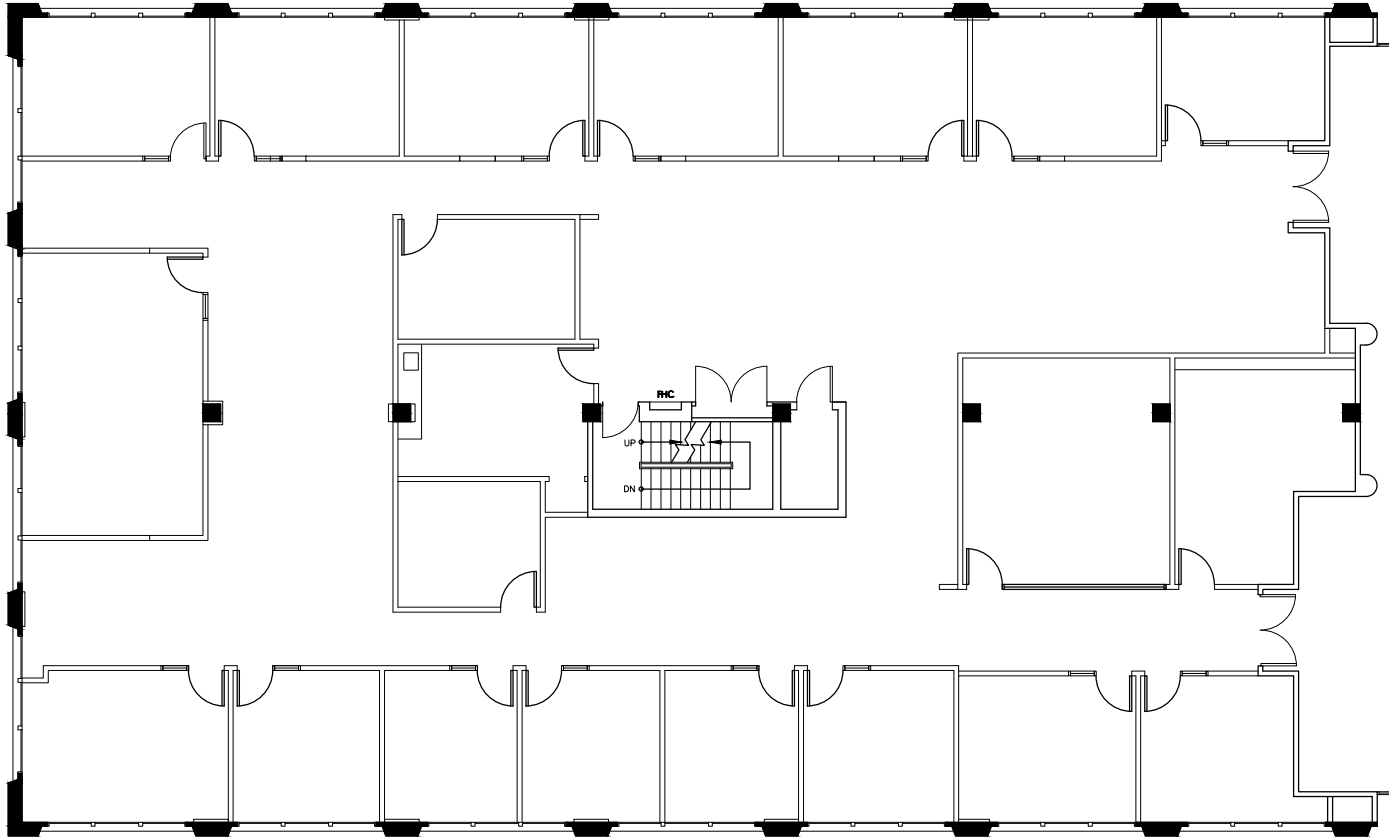
 **Kidder
Mathews**

FOR LEASE

66 Bovet

66 BOVET ROAD, SAN MATEO, CA

Suite 100



JAMES LEES
650.769.3520
james.lees@kidder.com
LIC #00683028

SANDY RODRIGUEZ
650.769.3528
sandy.rodriguez@kidder.com
LIC #01249030

KIDDER.COM

This information supplied herein is from sources we deem reliable. It is provided without any representation, warranty, or guarantee, expressed or implied as to its accuracy. Prospective Buyer or Tenant should conduct an independent investigation and verification of all matters deemed to be material, including, but not limited to, statements of income and expenses. Consult your attorney, accountant, or other professional advisor.

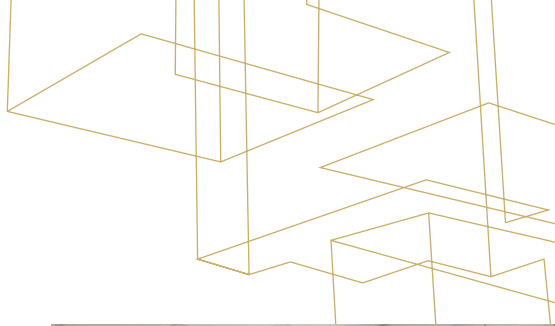
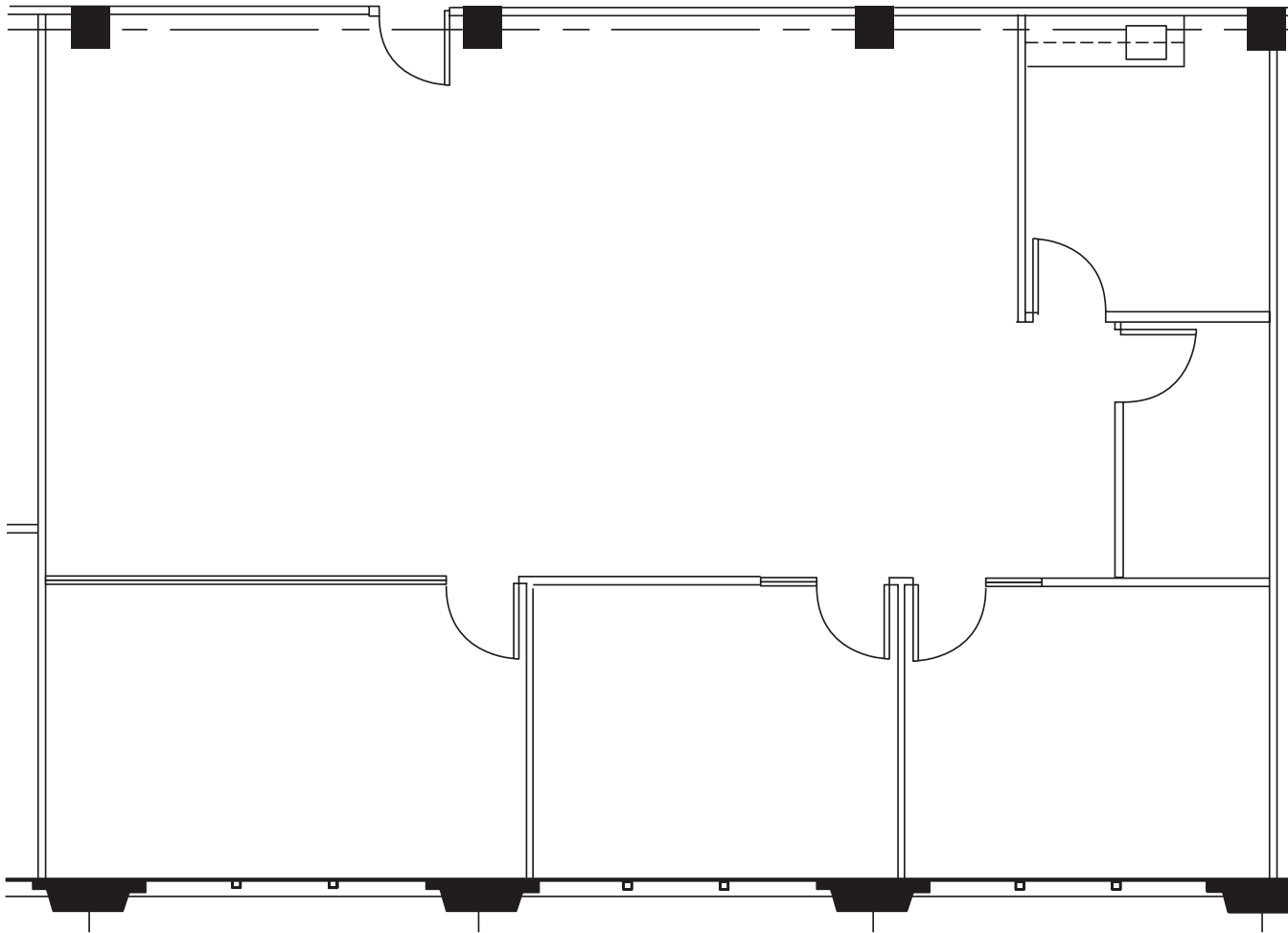


FOR LEASE

66 Bovet

66 BOVET ROAD, SAN MATEO, CA

Suite 320



JAMES LEES
650.769.3520
james.lees@kidder.com
LIC #00683028

SANDY RODRIGUEZ
650.769.3528
sandy.rodriguez@kidder.com
LIC #01249030

KIDDER.COM

This information supplied herein is from sources we deem reliable. It is provided without any representation, warranty, or guarantee, expressed or implied as to its accuracy. Prospective Buyer or Tenant should conduct an independent investigation and verification of all matters deemed to be material, including, but not limited to, statements of income and expenses. Consult your attorney, accountant, or other professional advisor.

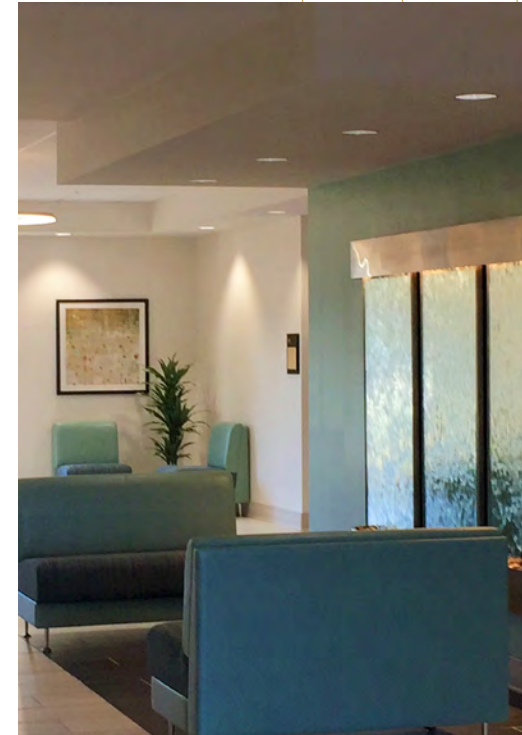
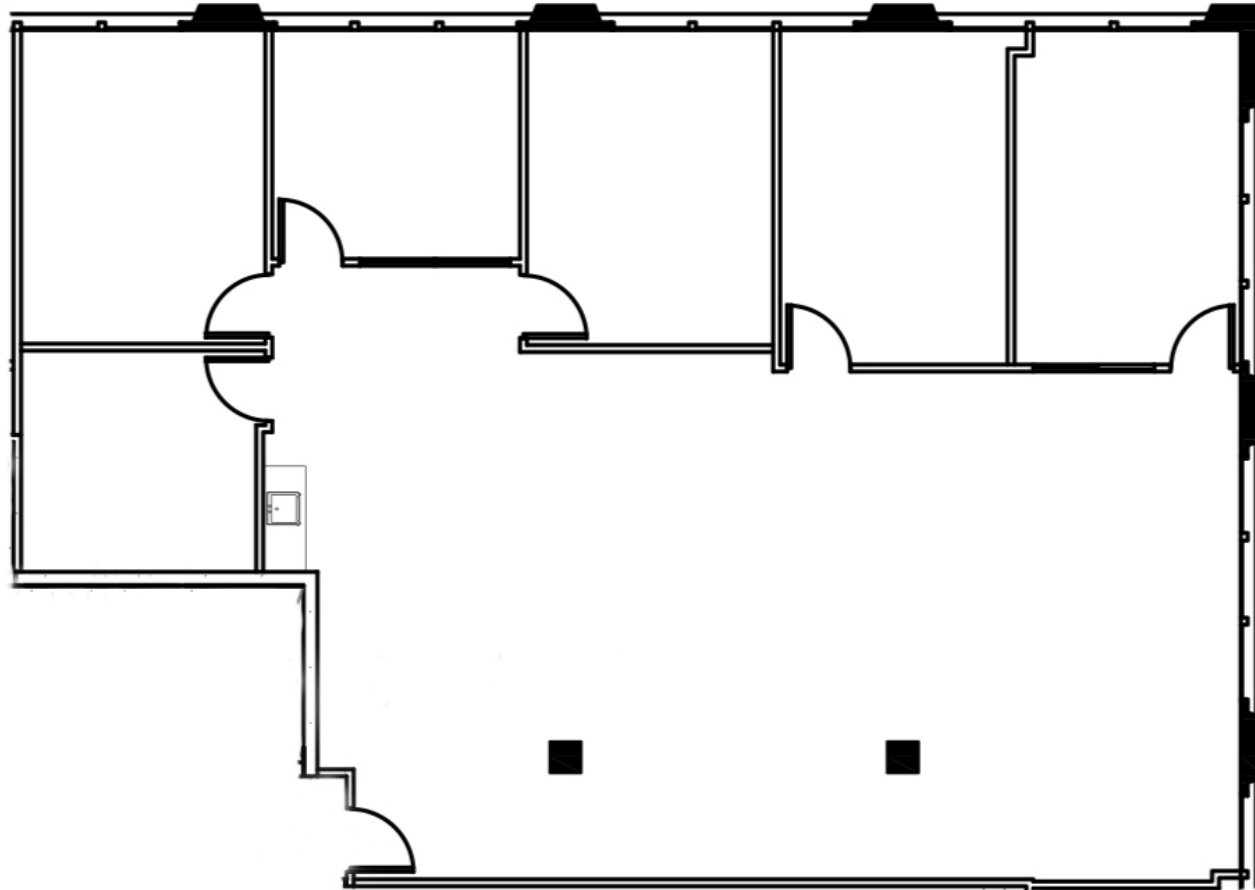


FOR LEASE

66 Bovet

66 BOVET ROAD, SAN MATEO, CA

Suite 380



JAMES LEES
650.769.3520
james.lees@kidder.com
LIC #00683028

SANDY RODRIGUEZ
650.769.3528
sandy.rodriguez@kidder.com
LIC #01249030

KIDDER.COM

This information supplied herein is from sources we deem reliable. It is provided without any representation, warranty, or guarantee, expressed or implied as to its accuracy. Prospective Buyer or Tenant should conduct an independent investigation and verification of all matters deemed to be material, including, but not limited to, statements of income and expenses. Consult your attorney, accountant, or other professional advisor.

 **Kidder
Mathews**