



LEVITAN

400 7TH AVENUE

12th and 13th - Park Slope, BK



400 7th Avenue

12th and 13th Streets



GROUND: 620 sf

POSSESSION: Immediate

BASEMENT: 620 sf

NEIGHBORS: Union Market, Brooklyn Industries, Fonda, Hanco's, Bank of America.

PATIO: Available

NOTES: Will consider food.

FRONT: 10'

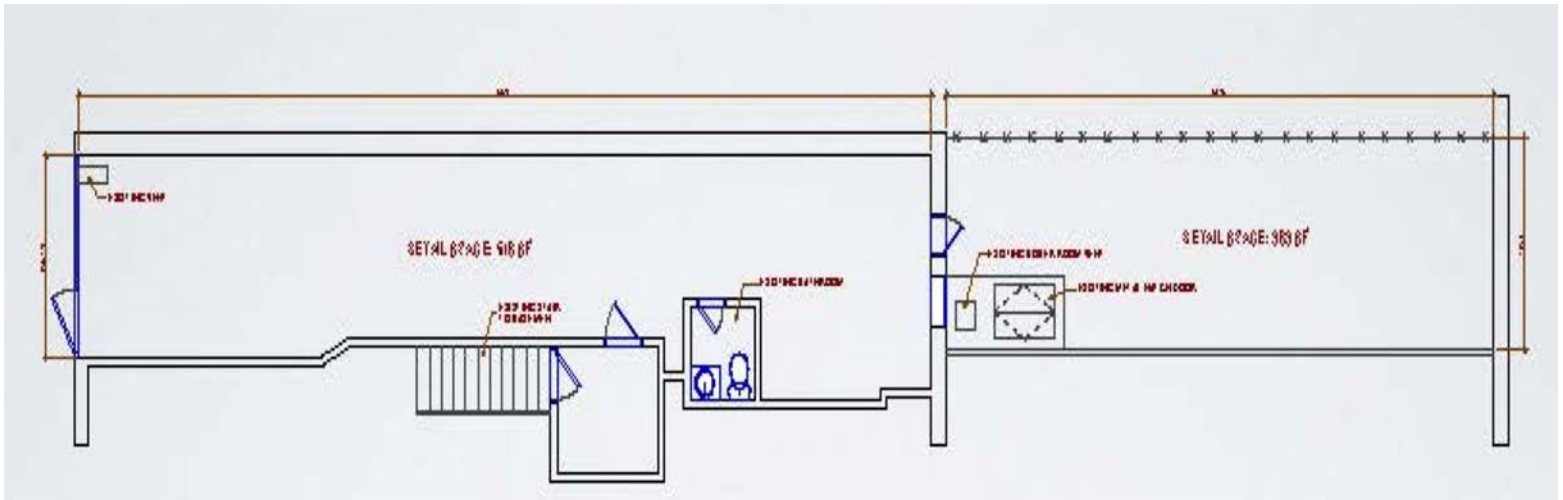
Currently built out as a turn-key office.

LEVITAN

Jeffrey Kessler | Cell: 914.391.7689 | Email: jeff@levitanrealestate.com

400 7th Avenue

12th and 13th Streets



LEVITAN

www.levitanrealestate.com