



DRIVE-THRU RESTAURANT

I-35 at 1808 E. Santa Fe St, Olathe, KS

INVESTMENT
PROPERTY
FOR SALE



SALE PRICE: \$600,000 | CAP RATE: 6.4%

DEMOGRAPHICS

	1 mile	3 miles	5 miles
Estimated Population	11,908	104,472	181,167
Avg. Household Income	\$59,697	\$92,642	\$107,270

- Highly visible drive-thru restaurant
- 6.4% capitalization rate
- Five year lease term
- 20,500 SF lot
- Just off Interstate 35
- 135th Street carries over 41,000 cars per day



CLICK HERE TO VIEW MORE LISTING INFORMATION

For More Information Contact:

TONY DETOMMASO | 816.412.7308 | tdetommaso@blockandco.com

LARRY GAINES | 816.412.7387 | lgaines@blockandco.com

DAVID BLOCK | 816.412.7400 | dblock@blockandco.com

Exclusive Agents



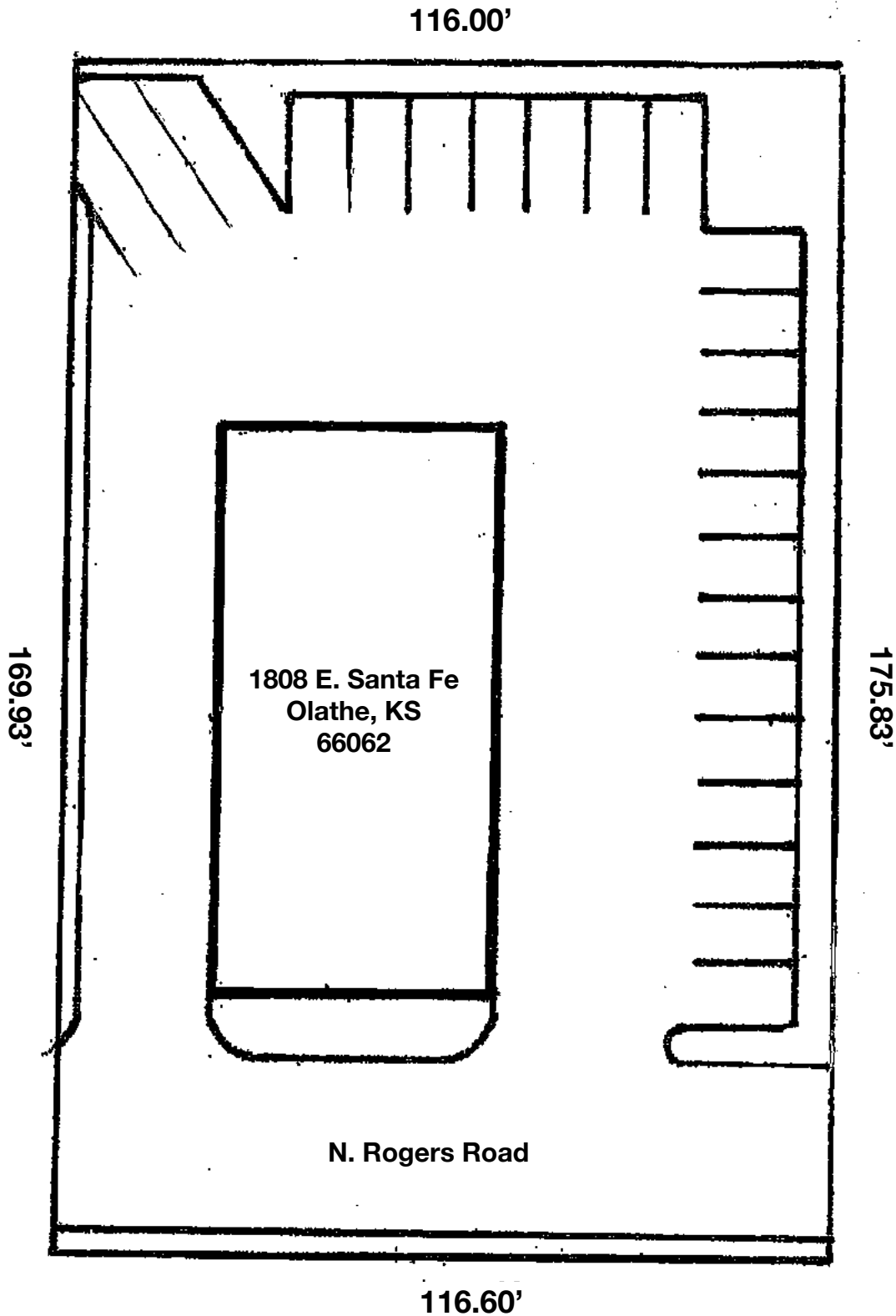
AERIAL

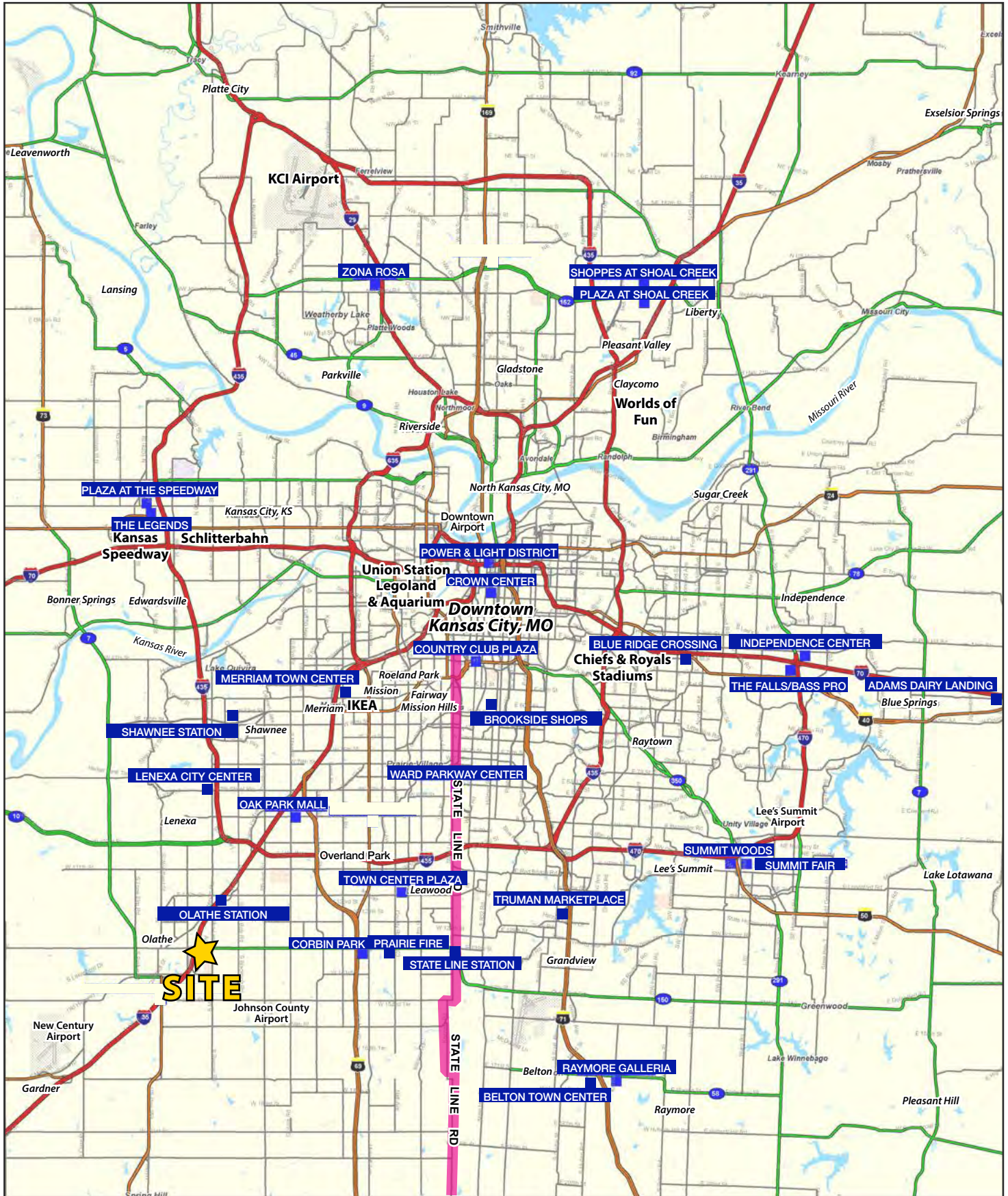


AERIAL



SITE PLAN



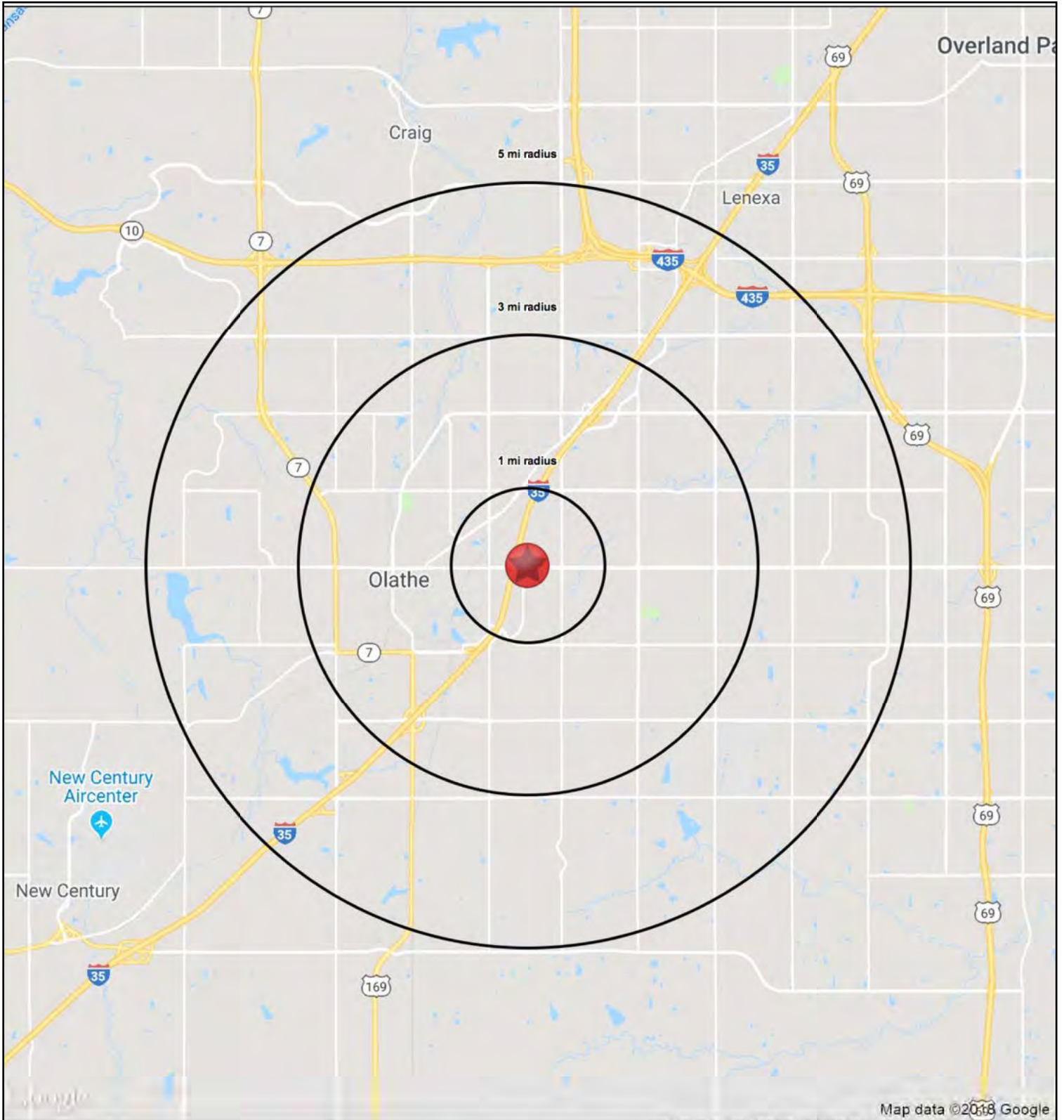




DRIVE-THRU RESTAURANT

I-35 at 1808 E. Santa Fe St, Olathe, KS

INVESTMENT
PROPERTY
FOR SALE





DRIVE-THRU RESTAURANT

I-35 at 1808 E. Santa Fe St, Olathe, KS

INVESTMENT
PROPERTY
FOR SALE

1808 E. Santa Fe Street		1 mi radius	3 mi radius	5 mi radius
Olathe, KS 66062				
POPULATION	2017 Estimated Population	13,088	105,084	182,007
	2022 Projected Population	13,710	110,010	180,589
	2010 Census Population	11,270	98,041	164,209
	2000 Census Population	10,484	83,871	124,778
	Projected Annual Growth 2017 to 2022	0.9%	0.9%	0.9%
	Historical Annual Growth 2000 to 2017	1.5%	1.5%	2.7%
	2017 Median Age	30.5	33.2	34.7
HOUSEHOLDS	2017 Estimated Households	4,821	37,580	65,841
	2022 Projected Households	4,861	40,080	70,159
	2010 Census Households	4,311	35,452	58,388
	2000 Census Households	3,887	29,270	43,958
	Projected Annual Growth 2017 to 2022	1.5%	1.3%	1.3%
	Historical Annual Growth 2000 to 2017	1.1%	1.7%	2.9%
RACE AND ETHNICITY	2017 Estimated White	75.3%	79.9%	81.9%
	2017 Estimated Black or African American	9.2%	6.4%	5.7%
	2017 Estimated Asian or Pacific Islander	3.4%	5.2%	5.7%
	2017 Estimated American Indian or Native Alaskan	0.0%	0.4%	0.4%
	2017 Estimated Other Races	11.5%	8.0%	6.3%
	2017 Estimated Hispanic	18.0%	11.8%	8.0%
INCOME	2017 Estimated Average Household Income	\$59,080	\$82,413	\$104,785
	2017 Estimated Median Household Income	\$53,324	\$80,828	\$83,958
	2017 Estimated Per Capita Income	\$21,851	\$33,221	\$38,083
EDUCATION (AGE 25+)	2017 Estimated Elementary (Grade Level 0 to 8)	6.0%	3.1%	2.3%
	2017 Estimated Some High School (Grade Level 9 to 11)	5.8%	3.4%	2.7%
	2017 Estimated High School Graduate	22.5%	18.5%	15.2%
	2017 Estimated Some College	25.8%	21.9%	18.5%
	2017 Estimated Associates Degree Only	9.7%	8.9%	8.4%
	2017 Estimated Bachelors Degree Only	21.8%	28.2%	33.5%
	2017 Estimated Graduate Degree	8.5%	14.9%	18.5%
BUSINESS	2017 Estimated Total Businesses	823	3,895	6,893
	2017 Estimated Total Employees	10,470	54,058	100,878
	2017 Estimated Employee Population per Business	11.3	13.9	14.8
	2017 Estimated Residential Population per Business	14.2	27.0	26.4

