



# FREESTANDING OFFICE WITH YARD SPACE FOR LEASE








2876 SOUTH 460 WEST, SALT LAKE CITY, UTAH 84115



## PROPERTY INFORMATION

- 5,194 SF Freestanding Office Building
- 0.51 Acre Secure, Fenced Yard
- Site Size: 0.76 Acres
- Secured Parking
- ADA Accessible
- Billboard Signage with Freeway Frontage
- Solar Panels
- Easy Access to I-15, I-80 and S.R. 201

## TRAVEL TIMES

-  I-15 ACCESS 2 MINS
-  I-80 ACCESS 3 MINS
-  STATE ROAD 201 5 MINS
-  TRAX STATION 5 MINS
-  I-215 ACCESS 7 MINS
-  DOWNTOWN SALT LAKE 13 MINS
-  SALT LAKE INTERNATIONAL AIRPORT 14 MINS

**LEASE RATE : \$20.00/SF MODIFIED GROSS**

DEREK KLOPFER  
DEREK.KLOPFER@CRCNATIONWIDE.COM

**801.617.1700**

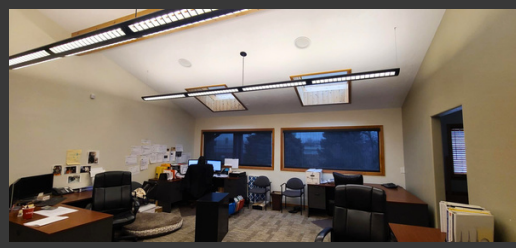
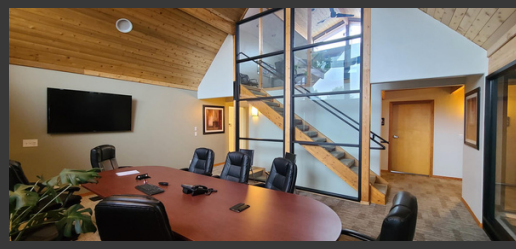
COLTER SMITH  
COLTER.SMITH@CRCNATIONWIDE.COM



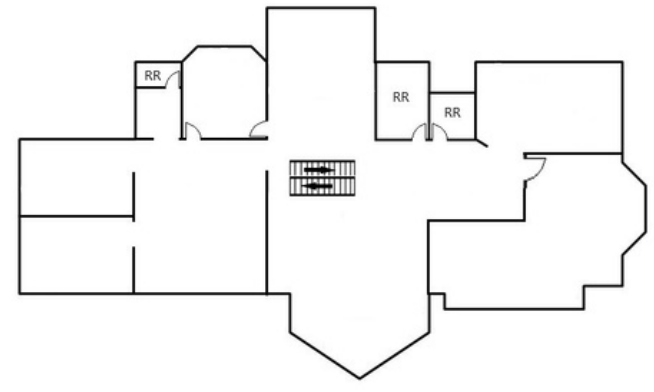


# FREESTANDING OFFICE WITH YARD SPACE FOR LEASE

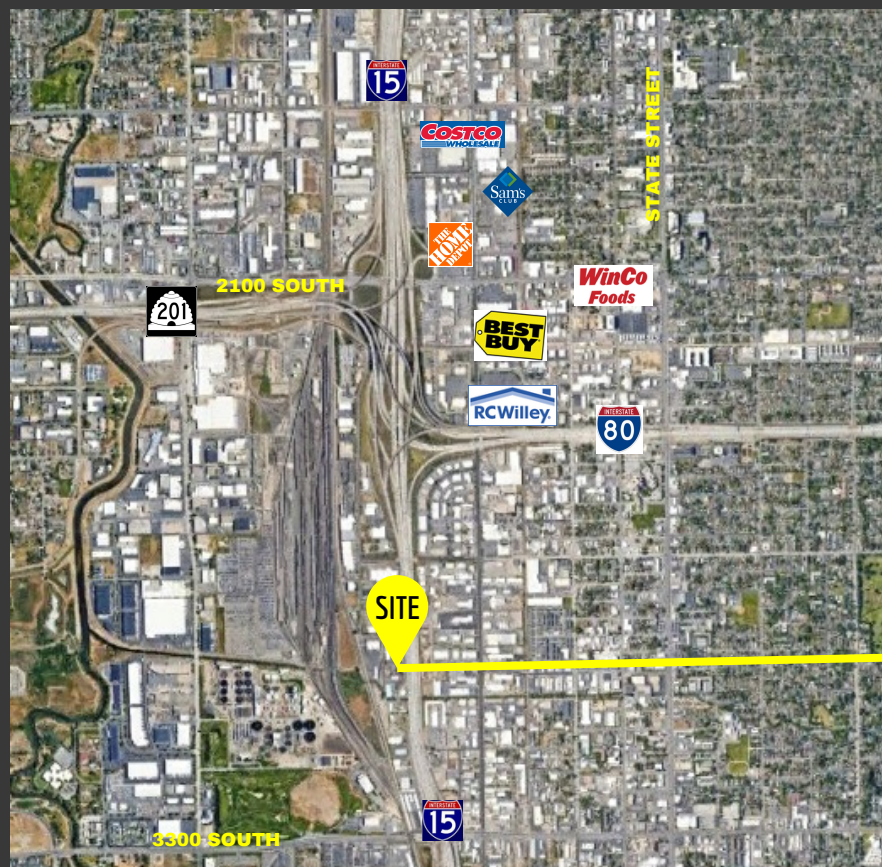
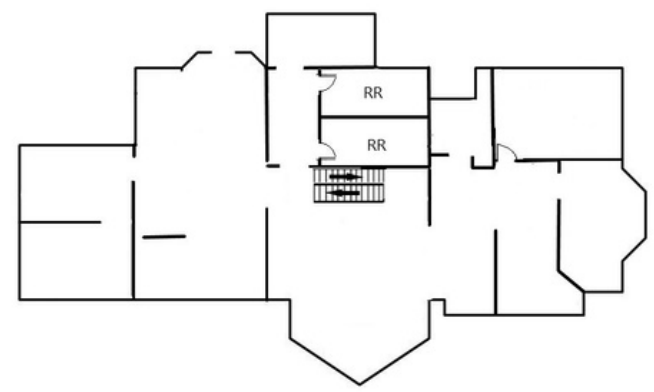
2876 SOUTH 460 WEST, SALT LAKE CITY, UTAH 84115



### Main Level Floor Plan



### Garden Level Floor Plan



This information is given with the understanding that all negotiations and/or real estate activity related to the property described above shall be conducted through this cRc Nationwide office. The information while not guaranteed, was obtained from sources we believe to be reliable.

DEREK KLOPFER  
DEREK.KLOPFER@CRCNATIONWIDE.COM

801.617.1700

COLTER SMITH  
COLTER.SMITH@CRCNATIONWIDE.COM