



# For Lease

## Office space available

- Availability: 3,600 SF
- Rate: \$9.75/SF Modified Gross
- Second floor suite offers reception area with large open space, offices, conference room, kitchen, restroom, and two entrances
- Ample on-site parking
- Easy access and visibility from 86<sup>th</sup> Street
- Close proximity to shopping, entertainment and restaurants

**8865 Harbach Boulevard  
Clive, IA**

---

**Aaron Hyde**

Vice President

Jones Lang LaSalle Brokerage, Inc.

+1 515 953 8834

[aaron.hyde@am.jll.com](mailto:aaron.hyde@am.jll.com)

**Justin Lossner**

Managing Director

Jones Lang LaSalle Brokerage, Inc.

+1 515 371 0846

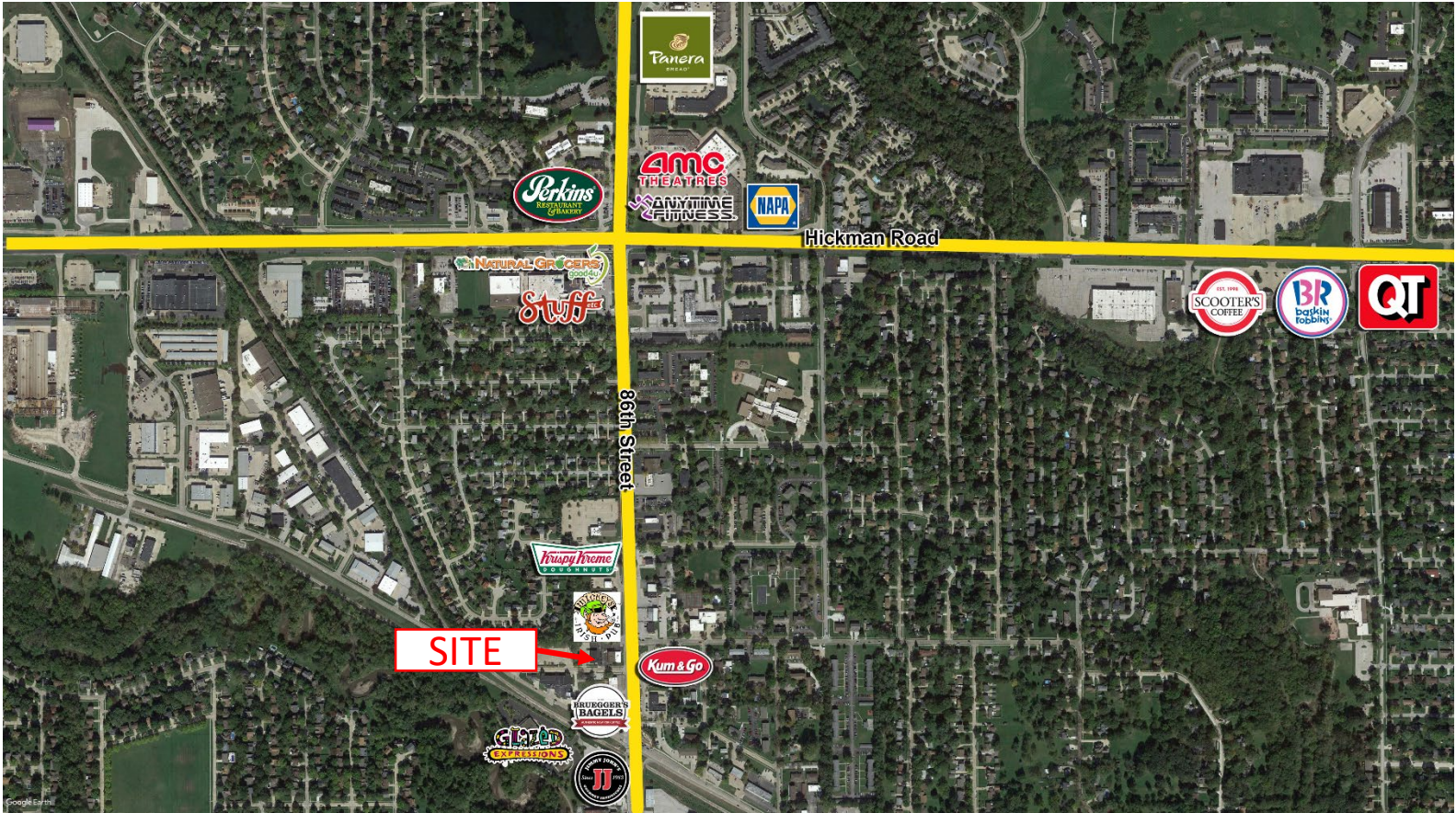
[justin.lossner@am.jll.com](mailto:justin.lossner@am.jll.com)

---

[jll.com/des-moines](http://jll.com/des-moines)



# Location



# Demographics

|                   | 1 Mile   | 3 Miles  | 5 Miles  |
|-------------------|----------|----------|----------|
| Population        | 9,733    | 92,953   | 211,676  |
| Households        | 4,350    | 39,788   | 87,429   |
| Average HH Income | \$88,491 | \$93,218 | \$98,829 |

The information contained herein has been given to us by the owner of the property or other sources we deem reliable. We have no reason to doubt its accuracy, but we do not guarantee it. All information should be verified prior to purchase or lease. Jones Lang LaSalle Brokerage, Inc. is a licensed broker in the State of Iowa.

