



MEDICAL OFFICE SPACE FOR LEASE

MAINLAND MEDICAL PLAZA

6807 EMMETT F. LOWRY EXPWY | TEXAS CITY, TEXAS 77591

CONTACT

ASHLEY CASSEL, SVP

713.490.3785

ashley.cassel@transwestern.com

DANIELLE LANZA, ASSOCIATE

713.231.1605

danielle.lanza@transwestern.com



MEDICAL OFFICE SPACE FOR LEASE

MAINLAND MEDICAL PLAZA

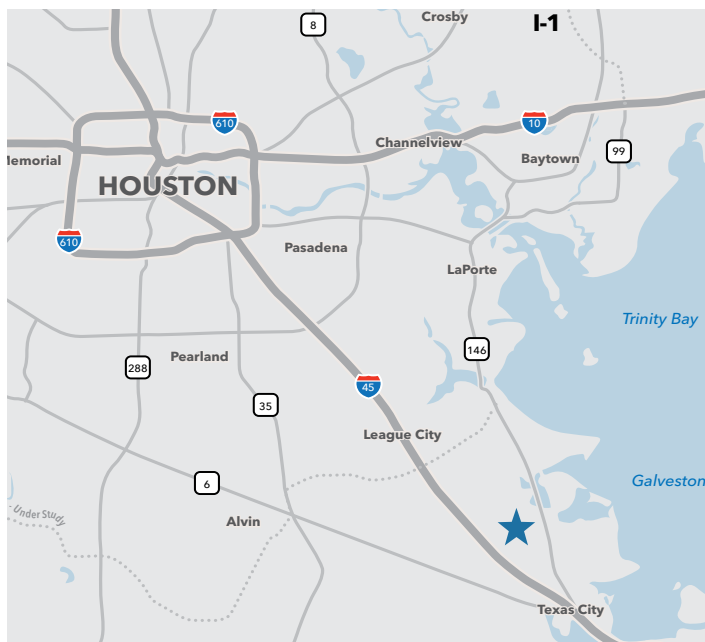
6807 EMMETT F. LOWRY EXPWY | TEXAS CITY, TEXAS 77591

AMENITIES

- Connected to Mainland Medical, an HCA Hospital
- Excellent Existing Physician Tenancy
- Card Key Access
- Owned by Healthpeak, Inc., the Largest Healthcare REIT in the USA

BUILDING SPECS

- 3-Story Class A Office Building
- 53,923 Gross Square Feet
- Parking Ratio: 5:1,000
- Generous TI's



DANIELLE LANZA, ASSOCIATE

713.231.1605

danielle.lanza@transwestern.com

ASHLEY CASSEL, SVP

713.490.3785

ashley.cassel@transwestern.com



MEDICAL OFFICE SPACE FOR LEASE

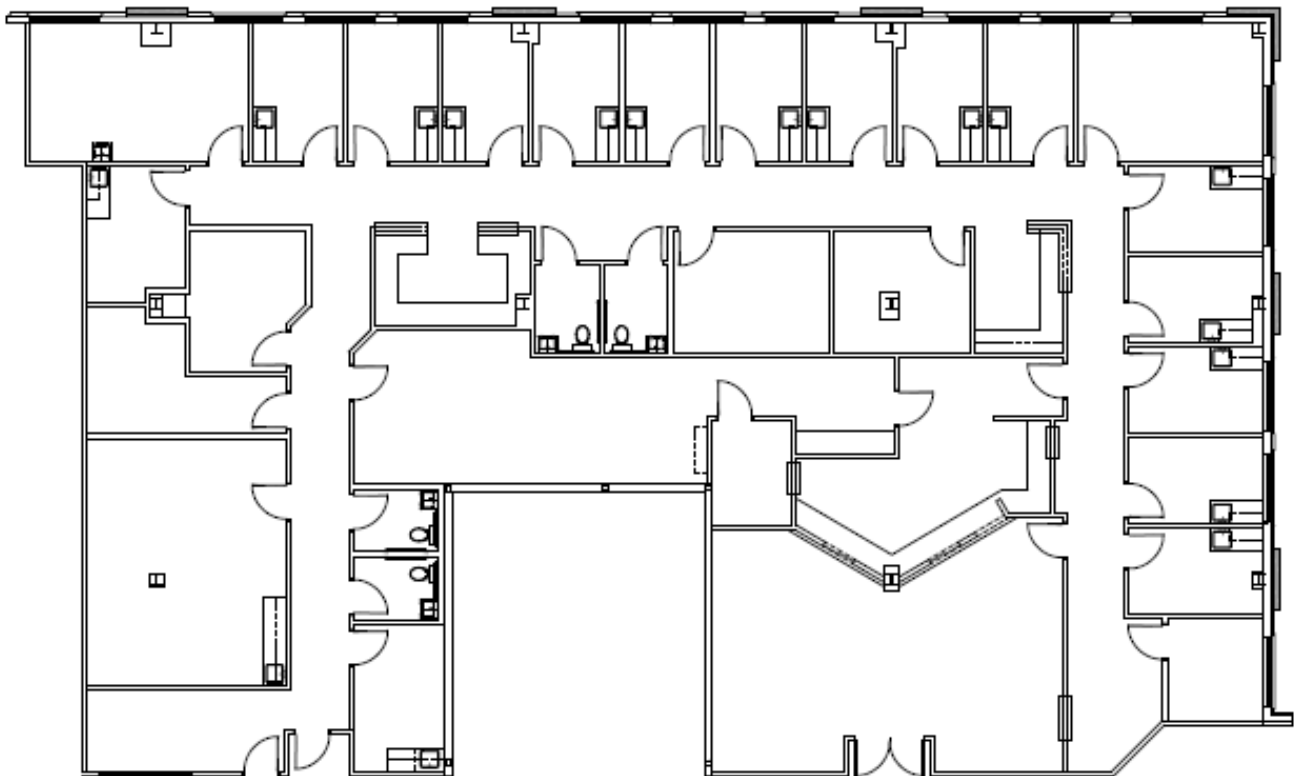
MAINLAND MEDICAL PLAZA

6807 EMMETT F. LOWRY EXPWY | TEXAS CITY, TEXAS 77591

1900 West Loop S
Suite 1300
Houston, TX 77027
T 713.270.7700
F 713.270.6285
transwestern.com

FLOOR PLAN

SUITE 103: 4,447 SF



CONTACT

ASHLEY CASSEL, SVP

713.490.3785

ashley.cassel@transwestern.com

DANIELLE LANZA, ASSOCIATE

713.231.1605

danielle.lanza@transwestern.com

The information provided herein was obtained from sources believed reliable; however, Transwestern makes no guarantees, warranties or representations as to the completeness or accuracy thereof. The presentation of this property is submitted subject to errors, omissions, change of price or conditions, prior sale or lease, or withdrawal without notice. Copyright © 2018 Transwestern.

MEDICAL OFFICE SPACE FOR LEASE

MAINLAND MEDICAL PLAZA

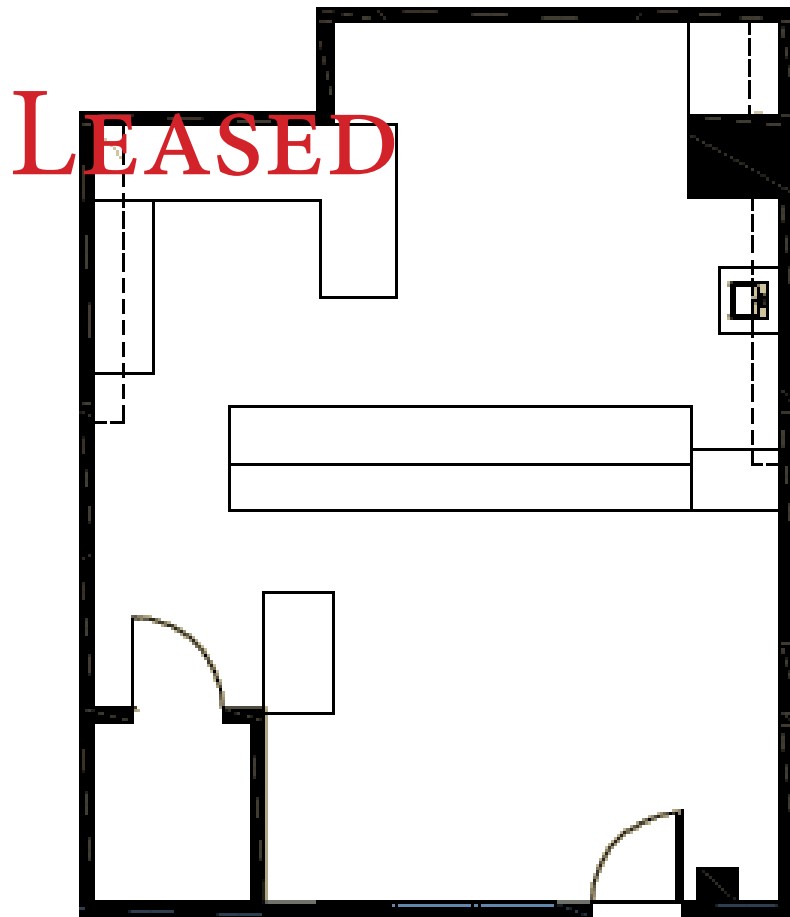
6807 EMMETT F. LOWRY EXPWY | TEXAS CITY, TEXAS 77591

1900 West Loop S
Suite 1300
Houston, TX 77027

T 713.270.7700
F 713.270.6285
transwestern.com

FLOOR PLAN

SUITE 104: 732 SF



CONTACT

ASHLEY CASSEL, SVP
713.490.3785
ashley.cassel@transwestern.com

DANIELLE LANZA, ASSOCIATE
713.231.1605
danielle.lanza@transwestern.com

The information provided herein was obtained from sources believed reliable; however, Transwestern makes no guarantees, warranties or representations as to the completeness or accuracy thereof. The presentation of this property is submitted subject to errors, omissions, change of price or conditions, prior sale or lease, or withdrawal without notice. Copyright © 2018 Transwestern.

MEDICAL OFFICE SPACE FOR LEASE

MAINLAND MEDICAL PLAZA

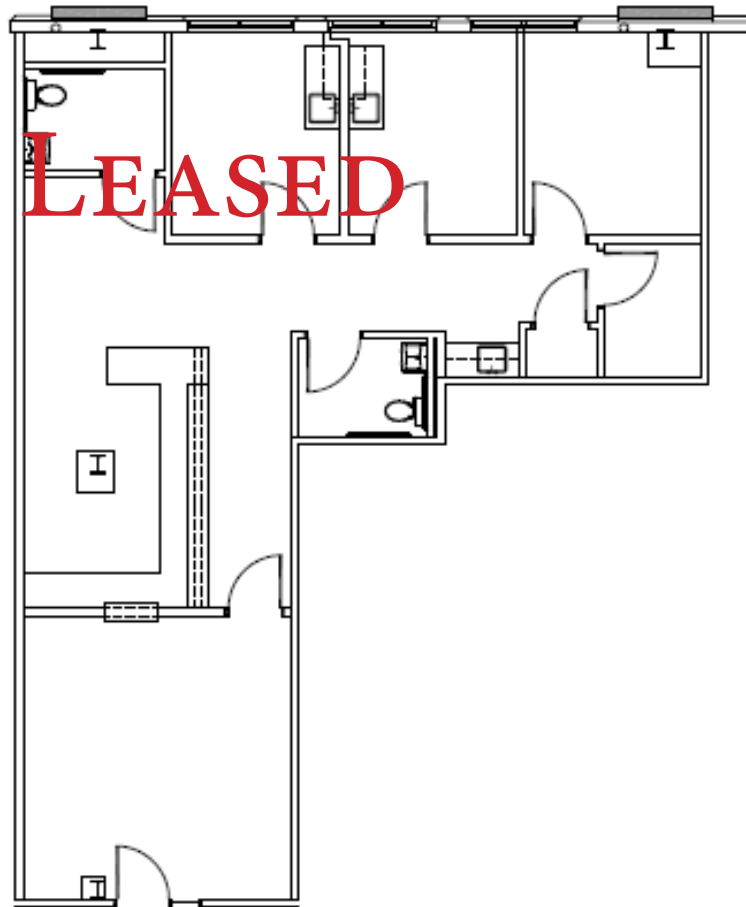
6807 EMMETT F. LOWRY EXPWY | TEXAS CITY, TEXAS 77591

1900 West Loop S
Suite 1300
Houston, TX 77027

T 713.270.7700
F 713.270.6285
transwestern.com

FLOOR PLAN

SUITE 106: 1,397 SF



CONTACT

ASHLEY CASSEL, SVP

713.490.3785

ashley.cassel@transwestern.com

DANIELLE LANZA, ASSOCIATE

713.231.1605

danielle.lanza@transwestern.com

The information provided herein was obtained from sources believed reliable; however, Transwestern makes no guarantees, warranties or representations as to the completeness or accuracy thereof. The presentation of this property is submitted subject to errors, omissions, change of price or conditions, prior sale or lease, or withdrawal without notice. Copyright © 2018 Transwestern.

MEDICAL OFFICE SPACE FOR LEASE

MAINLAND MEDICAL PLAZA

6807 EMMETT F. LOWRY EXPWY | TEXAS CITY, TEXAS 77591

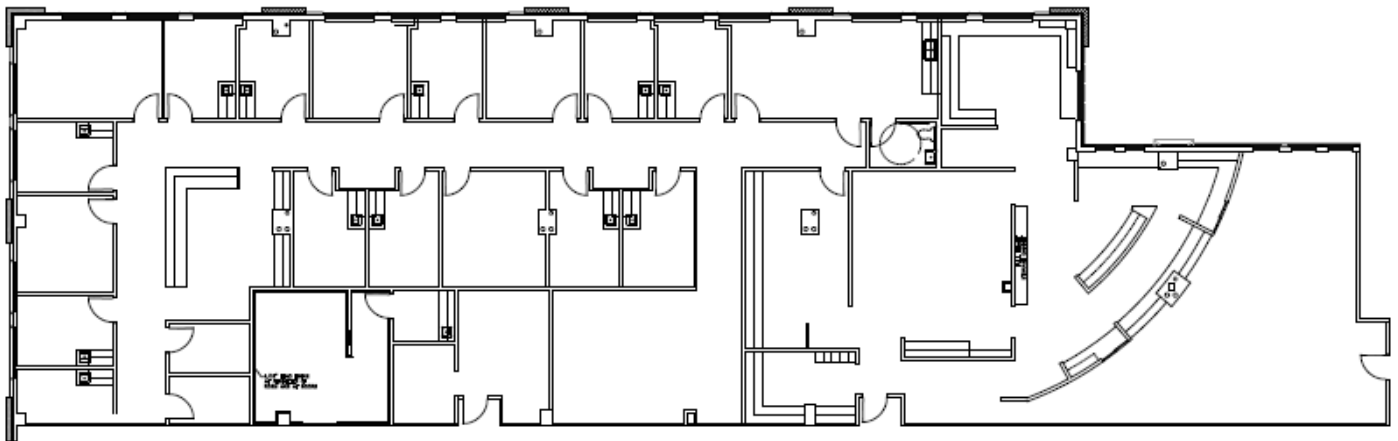
1900 West Loop S
Suite 1300
Houston, TX 77027

T 713.270.7700
F 713.270.6285
transwestern.com

FLOOR PLAN

SUITE 250: 8,096 SF

LEASED



CONTACT

ASHLEY CASSEL, SVP

713.490.3785

ashley.cassel@transwestern.com

DANIELLE LANZA, ASSOCIATE

713.231.1605

danielle.lanza@transwestern.com

The information provided herein was obtained from sources believed reliable; however, Transwestern makes no guarantees, warranties or representations as to the completeness or accuracy thereof. The presentation of this property is submitted subject to errors, omissions, change of price or conditions, prior sale or lease, or withdrawal without notice. Copyright © 2018 Transwestern.

MEDICAL OFFICE SPACE FOR LEASE

MAINLAND MEDICAL PLAZA

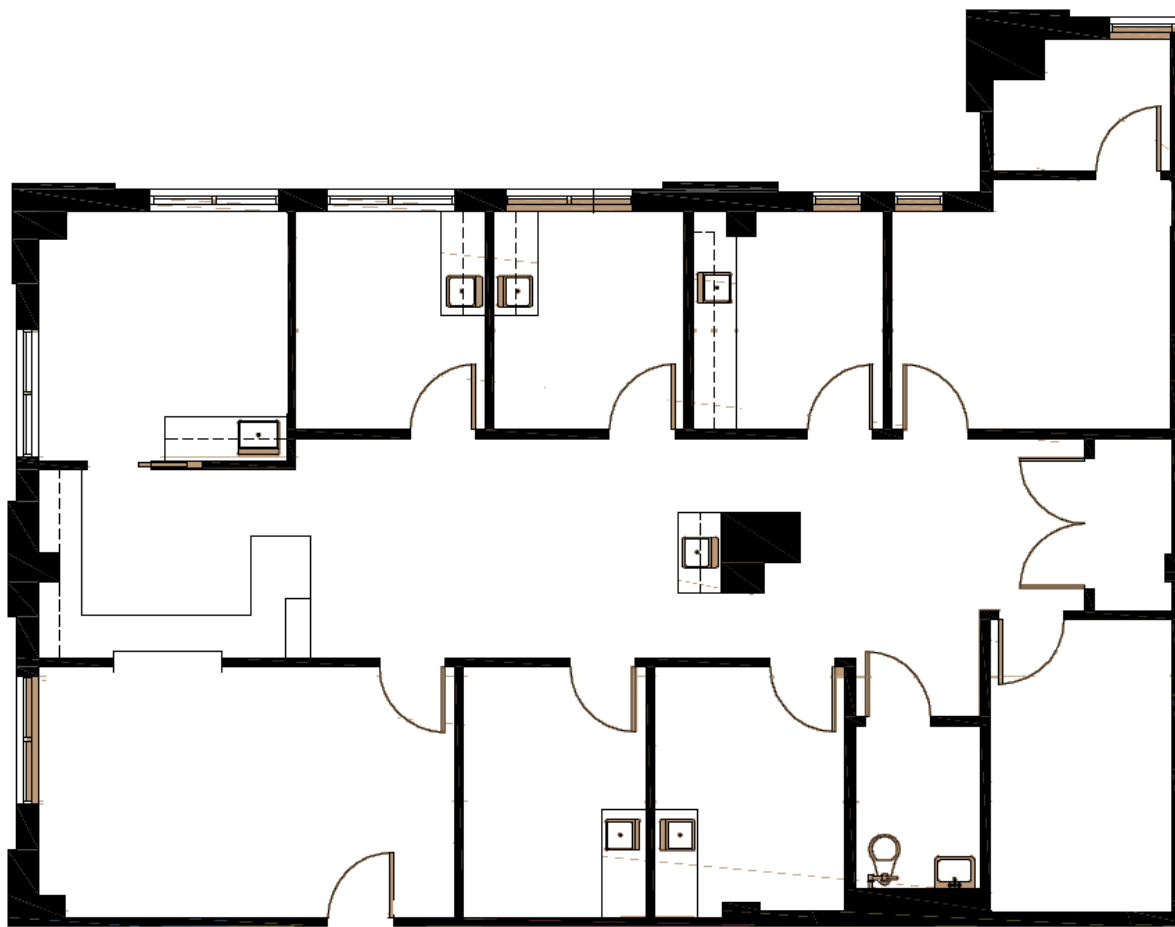
6807 EMMETT F. LOWRY EXPWY | TEXAS CITY, TEXAS 77591

1900 West Loop S
Suite 1300
Houston, TX 77027

T 713.270.7700
F 713.270.6285
transwestern.com

FLOOR PLAN

SUITE 300: 1,990 SF



CONTACT

ASHLEY CASSEL, SVP

713.490.3785

ashley.cassel@transwestern.com

DANIELLE LANZA, ASSOCIATE

713.231.1605

danielle.lanza@transwestern.com

The information provided herein was obtained from sources believed reliable; however, Transwestern makes no guarantees, warranties or representations as to the completeness or accuracy thereof. The presentation of this property is submitted subject to errors, omissions, change of price or conditions, prior sale or lease, or withdrawal without notice. Copyright © 2018 Transwestern.

MEDICAL OFFICE SPACE FOR LEASE

MAINLAND MEDICAL PLAZA

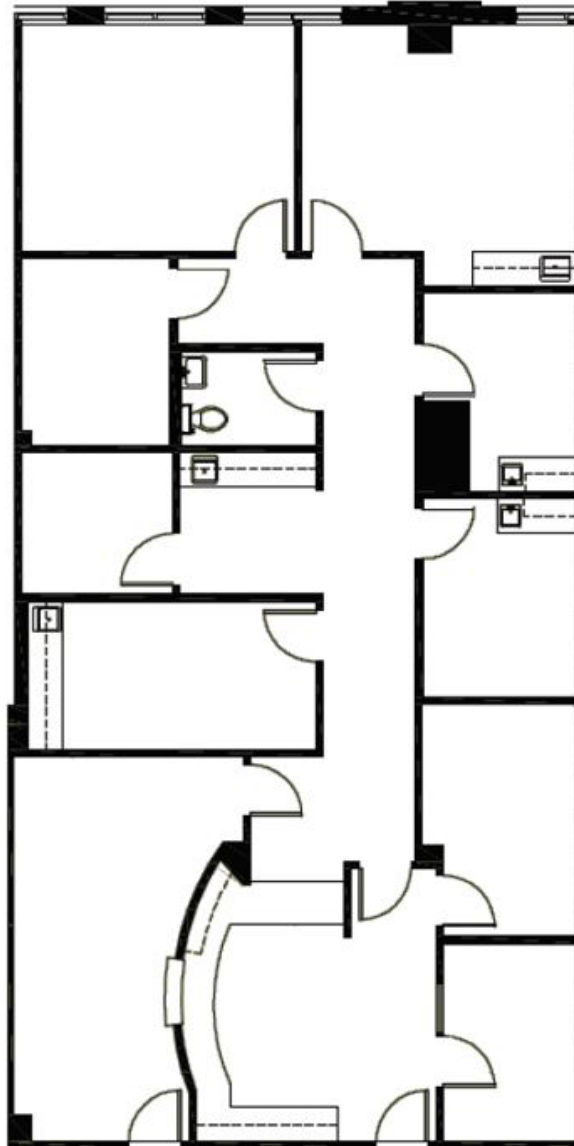
6807 EMMETT F. LOWRY EXPWY | TEXAS CITY, TEXAS 77591

T TRANSWESTERN®

1900 West Loop S
Suite 1300
Houston, TX 77027
T 713.270.7700
F 713.270.6285
transwestern.com

FLOOR PLAN

SUITE 303: 2,400 SF



CONTACT

ASHLEY CASSEL, SVP

713.490.3785

ashley.cassel@transwestern.com

DANIELLE LANZA, ASSOCIATE

713.231.1605

danielle.lanza@transwestern.com

The information provided herein was obtained from sources believed reliable; however, Transwestern makes no guarantees, warranties or representations as to the completeness or accuracy thereof. The presentation of this property is submitted subject to errors, omissions, change of price or conditions, prior sale or lease, or withdrawal without notice. Copyright © 2018 Transwestern.

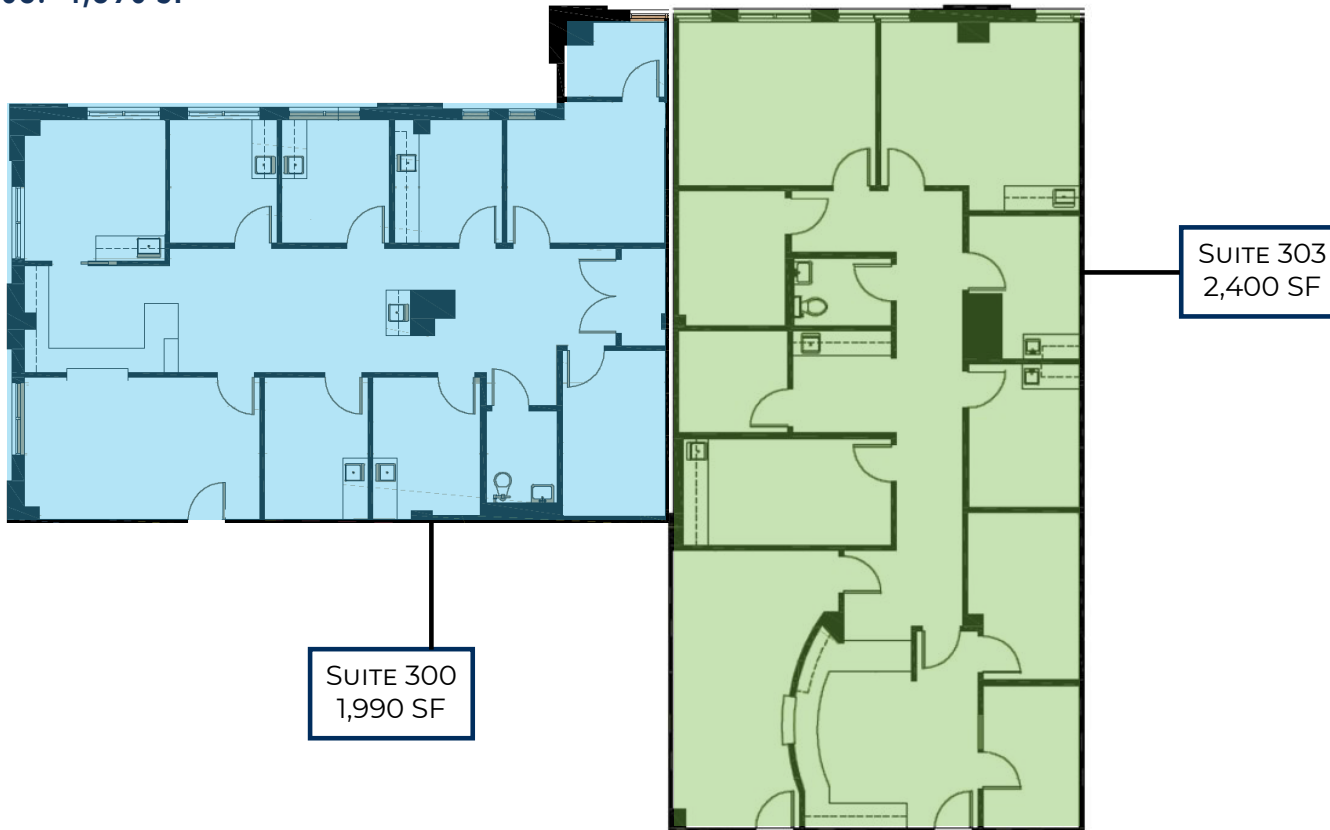
MEDICAL OFFICE SPACE FOR LEASE

MAINLAND MEDICAL PLAZA

6807 EMMETT F. LOWRY EXPWY | TEXAS CITY, TEXAS 77591

FLOOR PLAN

SUITE 300 + 303: 4,390 SF



CONTACT

ASHLEY CASSEL, SVP

713.490.3785

ashley.cassel@transwestern.com

DANIELLE LANZA, ASSOCIATE

713.231.1605

danielle.lanza@transwestern.com

The information provided herein was obtained from sources believed reliable; however, Transwestern makes no guarantees, warranties or representations as to the completeness or accuracy thereof. The presentation of this property is submitted subject to errors, omissions, change of price or conditions, prior sale or lease, or withdrawal without notice. Copyright © 2018 Transwestern.

MEDICAL OFFICE SPACE FOR LEASE

MAINLAND MEDICAL PLAZA

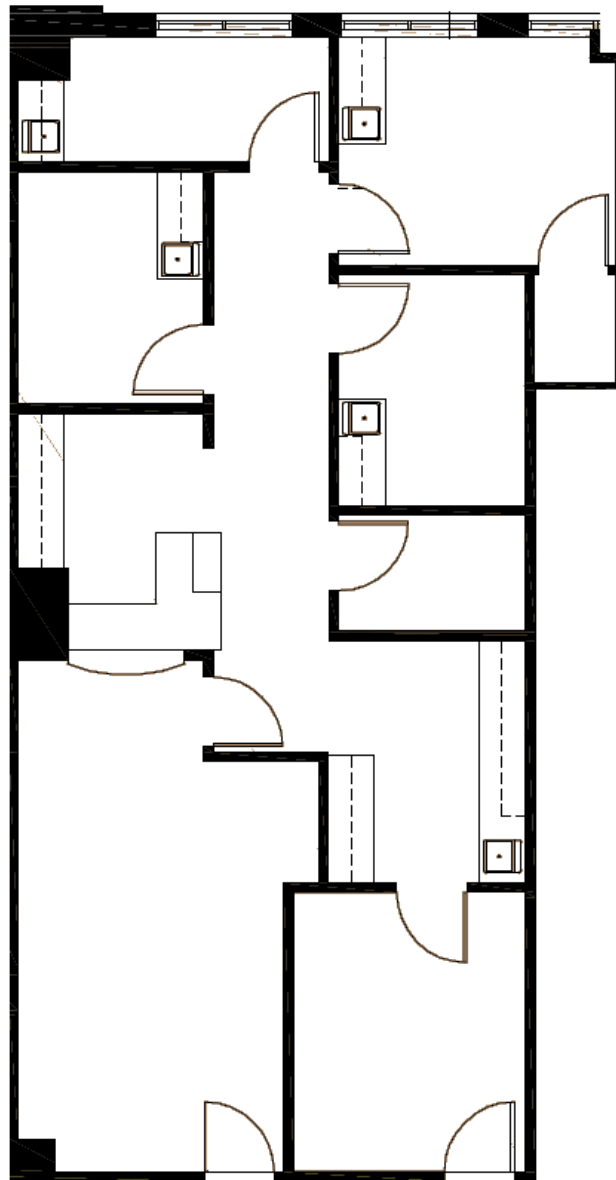
6807 EMMETT F. LOWRY EXPWY | TEXAS CITY, TEXAS 77591

 **TRANSWESTERN®**

1900 West Loop S
Suite 1300
Houston, TX 77027
T 713.270.7700
F 713.270.6285
transwestern.com

FLOOR PLAN

SUITE 306: 1,240 SF



CONTACT

ASHLEY CASSEL, SVP

713.490.3785

ashley.cassel@transwestern.com

DANIELLE LANZA, ASSOCIATE

713.231.1605

danielle.lanza@transwestern.com

The information provided herein was obtained from sources believed reliable; however, Transwestern makes no guarantees, warranties or representations as to the completeness or accuracy thereof. The presentation of this property is submitted subject to errors, omissions, change of price or conditions, prior sale or lease, or withdrawal without notice. Copyright © 2018 Transwestern.

MEDICAL OFFICE SPACE FOR LEASE

MAINLAND MEDICAL PLAZA

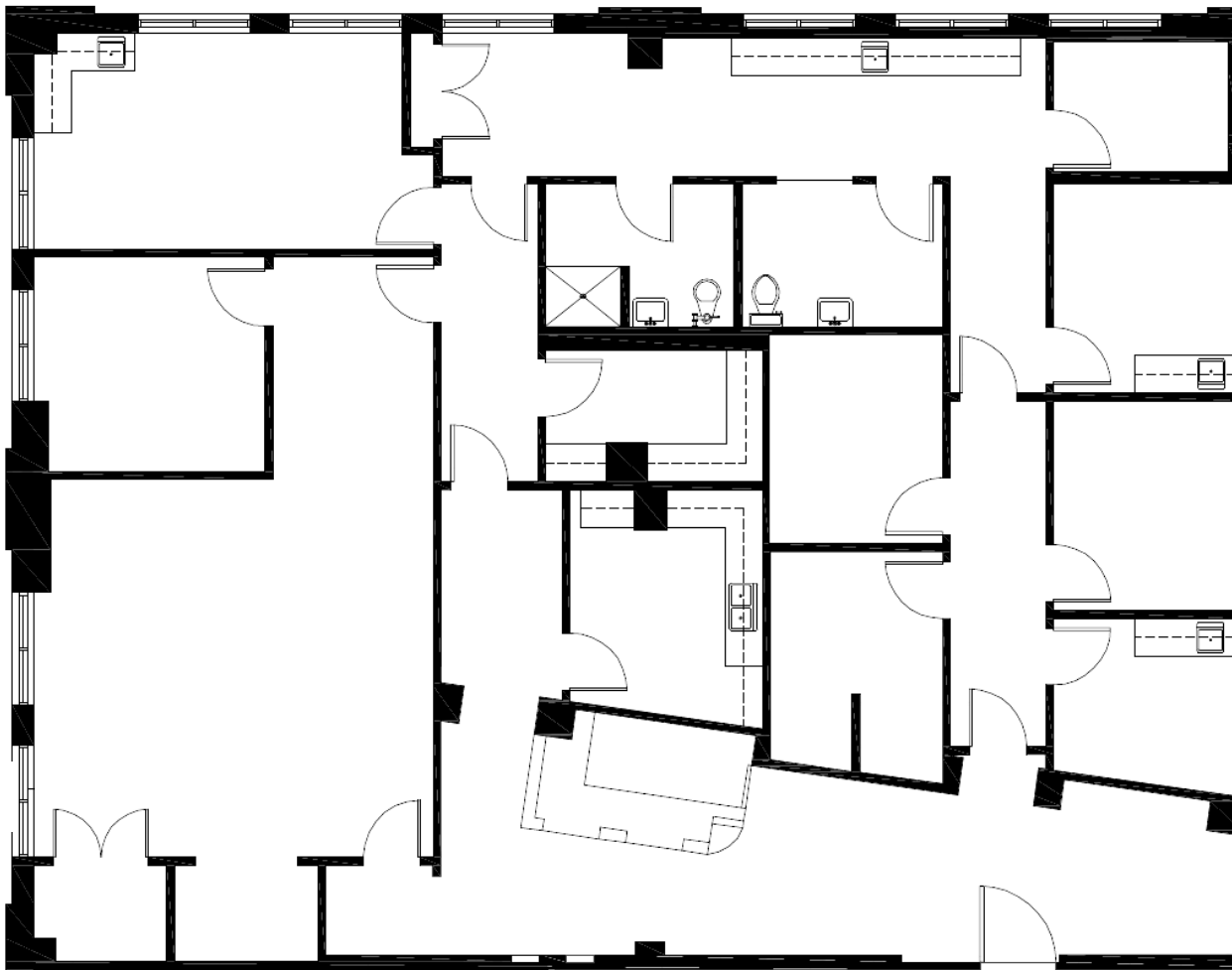
6807 EMMETT F. LOWRY EXPWY | TEXAS CITY, TEXAS 77591

1900 West Loop S
Suite 1300
Houston, TX 77027

T 713.270.7700
F 713.270.6285
transwestern.com

FLOOR PLAN

SUITE 308: 3,553 SF



CONTACT

ASHLEY CASSEL, SVP

713.490.3785

ashley.cassel@transwestern.com

DANIELLE LANZA, ASSOCIATE

713.231.1605

danielle.lanza@transwestern.com

The information provided herein was obtained from sources believed reliable; however, Transwestern makes no guarantees, warranties or representations as to the completeness or accuracy thereof. The presentation of this property is submitted subject to errors, omissions, change of price or conditions, prior sale or lease, or withdrawal without notice. Copyright © 2018 Transwestern.

MEDICAL OFFICE SPACE FOR LEASE



MAINLAND MEDICAL PLAZA

1900 West Loop S
Suite 1300
Houston, TX 77027
T 713.270.7700
F 713.270.6285
transwestern.com

6807 EMMETT F. LOWRY EXPWY | TEXAS CITY, TEXAS 77591

FLOOR PLAN

SUITE 306 + 308: 4,793 SF



CONTACT

ASHLEY CASSEL, SVP

713.490.3785

ashley.cassel@transwestern.com

DANIELLE LANZA, ASSOCIATE

713.231.1605

danielle.lanza@transwestern.com

The information provided herein was obtained from sources believed reliable; however, Transwestern makes no guarantees, warranties or representations as to the completeness or accuracy thereof. The presentation of this property is submitted subject to errors, omissions, change of price or conditions, prior sale or lease, or withdrawal without notice. Copyright © 2018 Transwestern.

MEDICAL OFFICE SPACE FOR LEASE

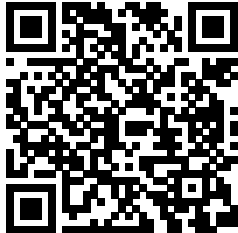
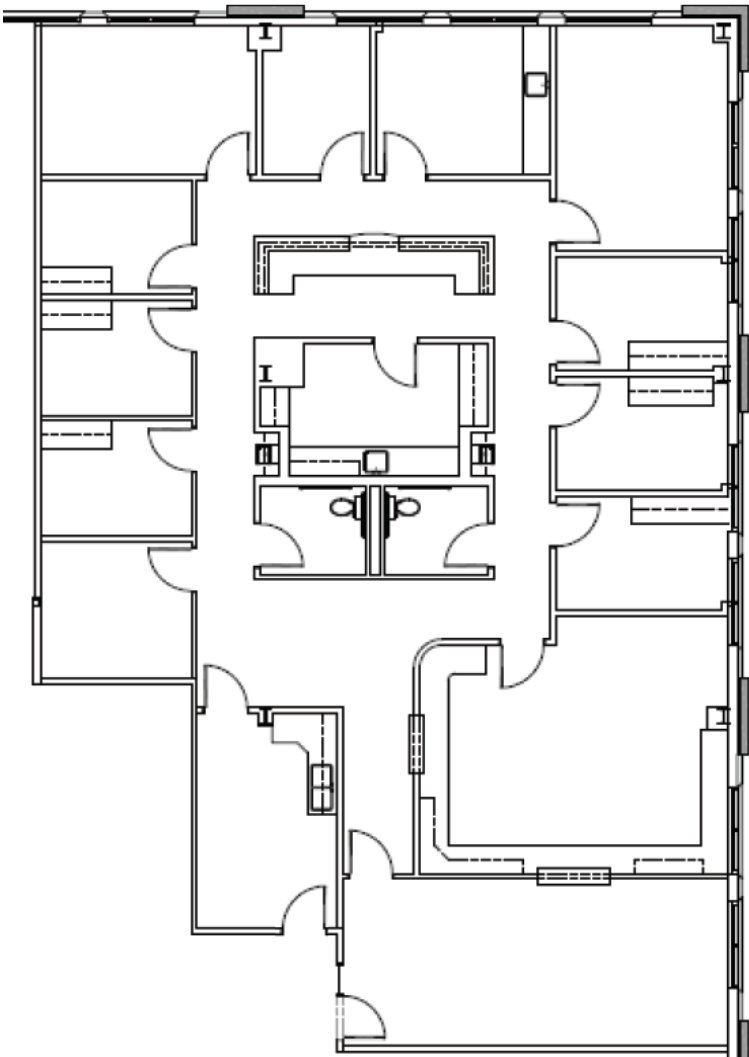
MAINLAND MEDICAL PLAZA

6807 EMMETT F. LOWRY EXPWY | TEXAS CITY, TEXAS 77591

1900 West Loop S
Suite 1300
Houston, TX 77027
T 713.270.7700
F 713.270.6285
transwestern.com

FLOOR PLAN

SUITE 310: 3,511 SF



CONTACT

ASHLEY CASSEL, SVP
713.490.3785
ashley.cassel@transwestern.com

DANIELLE LANZA, ASSOCIATE
713.231.1605
danielle.lanza@transwestern.com

The information provided herein was obtained from sources believed reliable; however, Transwestern makes no guarantees, warranties or representations as to the completeness or accuracy thereof. The presentation of this property is submitted subject to errors, omissions, change of price or conditions, prior sale or lease, or withdrawal without notice. Copyright © 2018 Transwestern.