

# NOKOMIS PLAZA | Nokomis, Florida

## SIZE

BUILDING: 90,000 s.f.

PARCEL: 17 acres

## LOCATION

Northeast and southeast quadrants of Tamiami Trail (US-41) and Roberts Road in Nokomis, Sarasota County, Florida

## TRAFFIC COUNTS

US-41 - 45,000

## KEY TENANTS

Burger King, Dunkin Donuts, Heartland Dental

## KEY DEMOGRAPHICS

3-MILE RADIUS

### POPULATION

Current Estimated Population	25,459
Projected Population (5 Years)	27,222
2010 Census Population	23,779

### HOUSEHOLDS

Current Estimated Households	13,282
Projected Households (5 Years)	13,930
2010 Census Households	12,286

### INCOME

Average Household Income	\$85,707
Household Income \$50,000+	55.2%

### MEDIAN AGE

61.6 years

### DAYTIME DEMOGRAPHICS

Number of Businesses	1,102
Number of Employees	7,766
Total Daytime Population	21,791

### CONSUMER EXPENDITURES

Total Retail Expenditures	\$837 M
Per Household per Month	\$2,510

## LEASING CONTACT

**Massimo Rastrelli**

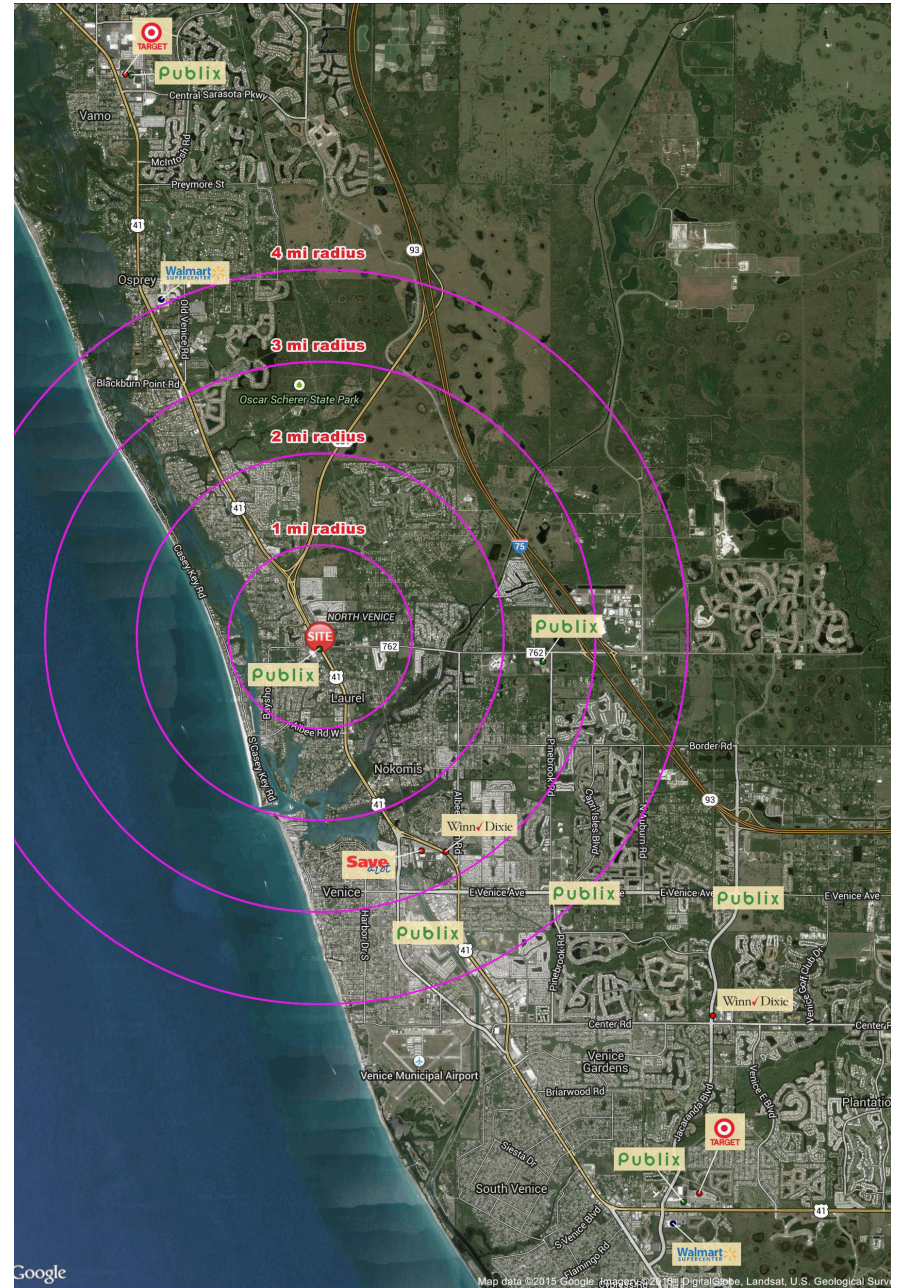
941.552.4336 OFFICE

941.806.0636 FAX

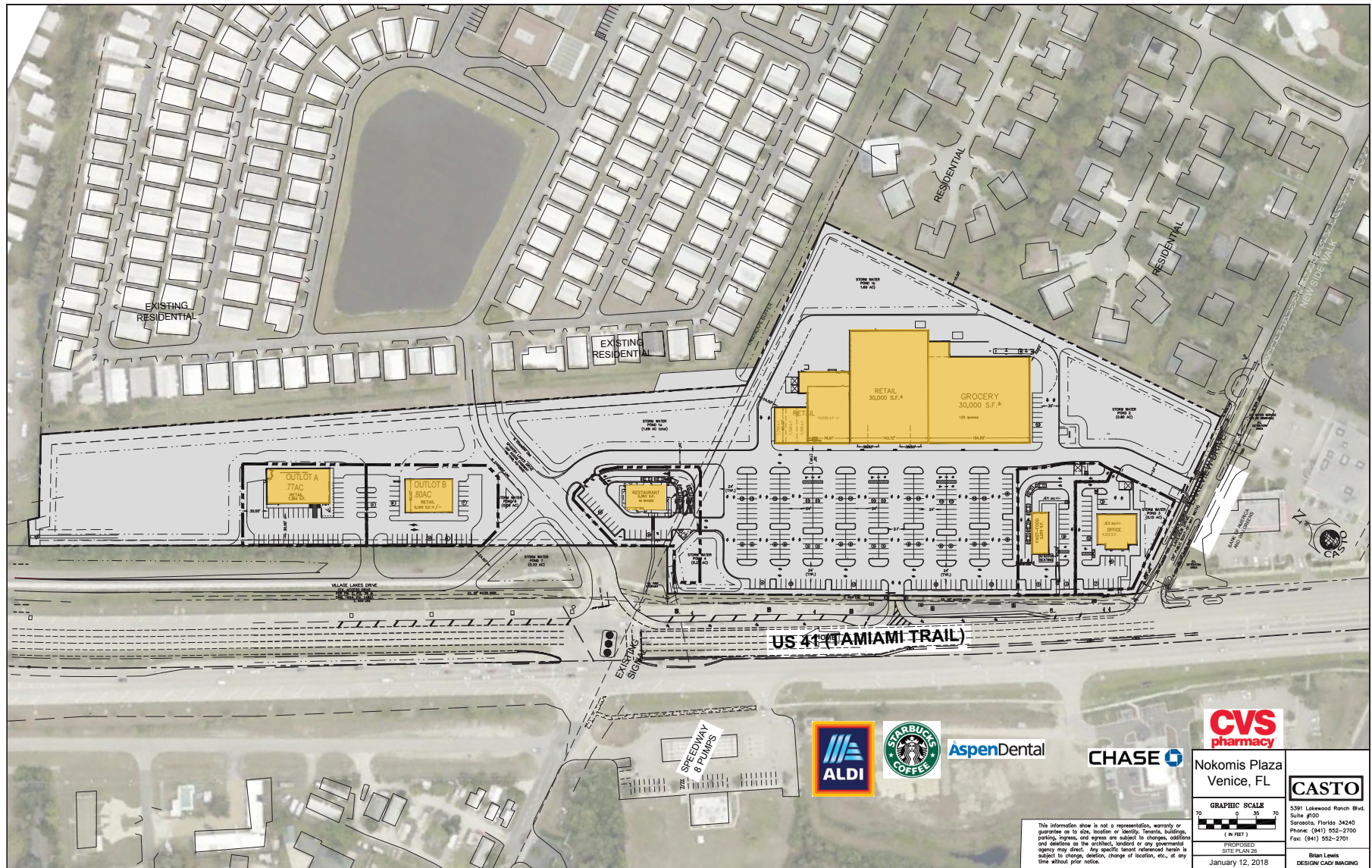
MRastrelli@castoinfo.com



5391 Lakewood Ranch Blvd., Suite 100  
Sarasota, Florida 34240  
[www.castoinfo.com](http://www.castoinfo.com)







<b>CVS</b> pharmacy	
Nokomis Plaza Venice, FL	
<b>CASTO</b>	
<small>5391 Lakewood Ranch Blvd. Suite #100 Sarasota, Florida 34240 Phone: (941) 552-2700 Fax: (941) 552-2701</small>	
<small>Brian Lewis DESIGN CAD IMAGING</small>	

This information shall not be a representation, warranty or guarantee as to size, location or identity. Tenants, buildings, parking, signage, site access are subject to change. Additions and deletions as the architect, landlord or any governmental agency may direct. Any specific tenant referenced herein is subject to change, deletion, change of location, etc., at any time without prior notice.

*Site plan is conceptual; building sizes and shopping center configuration are subject to change without notice.*

