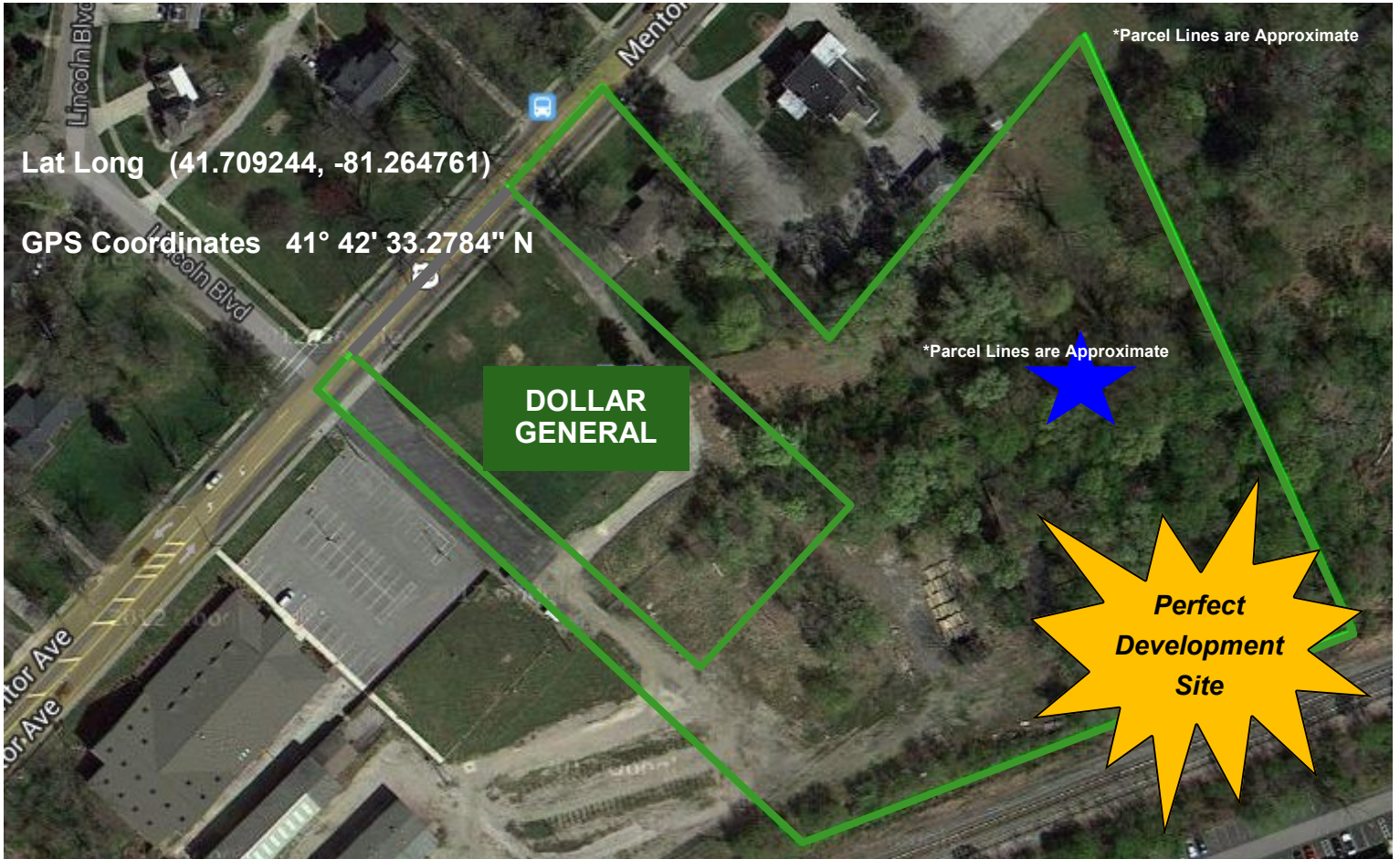


1025/1083 Mentor Avenue (US RT 20)

Development Site For Sale or Land Contract

Painesville, Ohio 44077 (Lake County)



Property Details:

- 4.81± Acres
- Commercial Zoning
- 325' ± of US RT 20 Frontage
- Utilities at Site
- Economic Incentives Available
- Adjacent to Lake County YMCA
- Easy Access to SR 44 & I-90



www.GlobalCommercialRE.com

8585 East Ave., Mentor, Ohio 44060

Real Estate Advisors Inc.
BROKER

**Global Real Estate
Advisors, Inc.**

Neil Sawicki, SIOR, Broker

440.255.5552 x 221

Neil@GlobalCommercialRE.com

440.339.8585 Cell



GLOBAL

This information has been secured from sources we believe are reliable, but we make no representations or warranties, expressed or implied, as to the accuracy of the information. References to condition, square footage or age are approximate. Buyer or Tenant acknowledges that they are relying on their own investigations and are not relying on Broker provided information. Procuring broker shall only be entitled to a commission, calculated in accordance with the rates approved by our principal only if such procuring broker executes a brokerage agreement acceptable to us and our principal and the conditions as set forth in the brokerage agreement are fully and unconditionally satisfied. Although all information furnished regarding property for sale, rental, or financing is from sources deemed reliable, such information has not been verified and no express representation is made nor is any to be implied as to the accuracy thereof and it is submitted subject to errors, omissions, change of price, rental or other conditions, prior sale, lease or financing, or withdrawal without notice and to any special conditions imposed by our principal.

1025/1083 Mentor Avenue (US RT 20)

Development Site For Sale or Land Contract

Painesville, Ohio 44077 (Lake County)



2013 Demographics	1 Mile	3 Mile	5 Mile
Population	9,144	16,396	92,135
Average Household Income	\$54,259	64,448	\$71,372
Households	3,352	18,022	36,381

2013 Traffic Count	
Mentor Ave. & SR 44	23,240
Fairgrounds Rd.	5,550



www.GlobalCommercialRE.com
8585 East Ave., Mentor, Ohio 44060

Real Estate Advisors Inc.
BROKER

**Global Real Estate
Advisors, Inc.**

Neil Sawicki, SIOR, Broker
440.255.5552 x 221
Neil@GlobalCommercialRE.com
440.339.8585 Cell

This information has been secured from sources we believe are reliable, but we make no representations or warranties, expressed or implied, as to the accuracy of the information. References to condition, square footage or age are approximate. Buyer or Tenant acknowledges that they are relying on their own investigations and are not relying on Broker provided information. Procuring broker shall only be entitled to a commission, calculated in accordance with the rates approved by our principal only if such procuring broker executes a brokerage agreement acceptable to us and our principal and the conditions as set forth in the brokerage agreement are fully and unconditionally satisfied. Although all information furnished regarding property for sale, rental, or financing is from sources deemed reliable, such information has not been verified and no express representation is made nor is any to be implied as to the accuracy thereof and it is submitted subject to errors, omissions, change of price, rental or other conditions, prior sale, lease or financing, or withdrawal without notice and to any special conditions imposed by our principal.