

**939 - 2,339 RSF  
AVAILABLE**



**WOODS MILL OFFICE BUILDING**  
**884 WOODS MILL ROAD | ST. LOUIS, MO 63011**

LEASED BY:

 **Newmark Grubb**  
Zimmer



Lease Rate: \$23.00/RSF, FS

## property highlights



Conveniently located at Interstate 141 & Clayton Road.



Located within 5 miles of St. Luke's Hospital, Mercy Hospital St. Louis, and Missouri Baptist Medical Center.



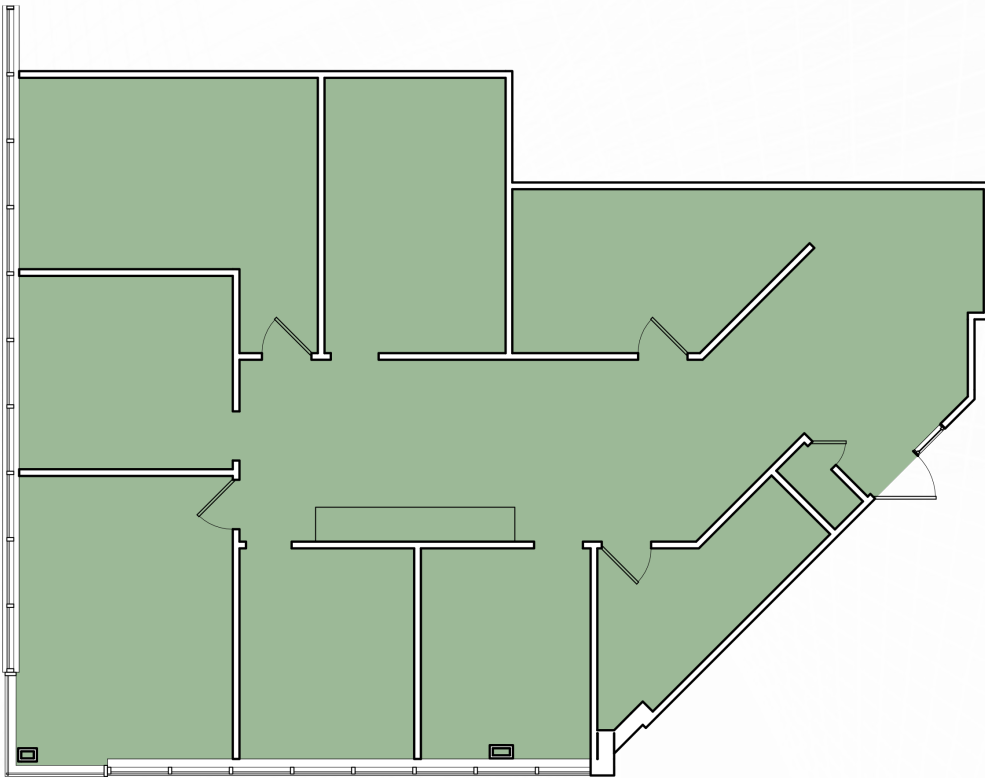
4/1,000 surface lot parking



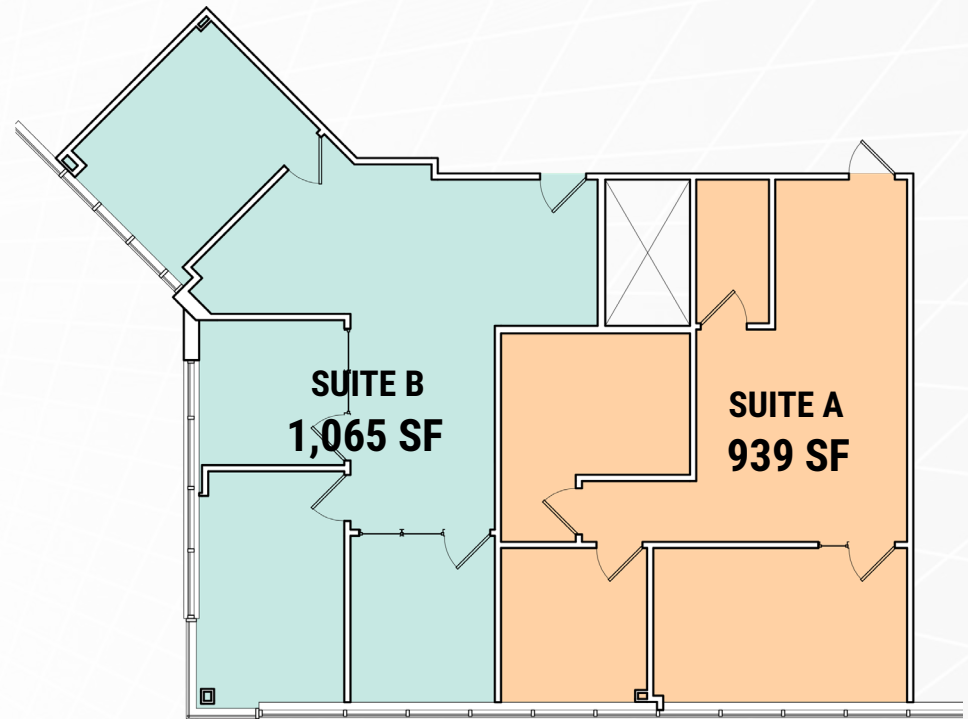
Medical office building with great tenant mix



**FIRST FLOOR: 2,339 SF AVAILABLE**



**SECOND FLOOR: 939 SF - 2,004 SF AVAILABLE**



\* Suites can be combined





**St. Luke's HOSPITAL**  
2.25 miles from Site

**Mercy**  
4 miles from Site

**Missouri Baptist MEDICAL CENTER**  
3.75 miles from Site

**SITE**

**Panera BREAD**  
**McDonald's**  
**ACE Hardware**  
**The Melting Pot FONDUE RESTAURANT**  
**Rich & Charlie's**  
**SUBWAY**

**Schnucks**

**TARGET**  
**QDOBA MEXICAN EATS**  
**HomeGoods**  
**WHOLE FOODS MARKET**  
**NAPOLI RESTAURANT**

Leasing Information:

**KEVIN McLAUGHLIN, SIOR**  
Executive Managing Director, Principal  
314.628.0436  
kmcLaughlin@ngzimmer.com

**BEN ALBERS**  
Managing Director - Office Brokerage  
314.628.0439  
balbers@ngzimmer.com

**DAN LESINSKI**  
Director  
314.628.0449  
dlesinski@ngzimmer.com

