

MULTIPLE PAD SITES AVAILABLE FOR SALE

DEMOGRAPHICS

	1 mile	3 miles	5 miles
Estimated Population	7,473	43,762	61,860
Avg. Household Income	\$73,662	\$80,295	\$79,514

- 400,000 SF Power Center anchored by Lowe's, OfficeMax, NTB, Steak 'n Shake, and new Sam's Club
- Adjacent to Walmart Supercenter, KFC, Wendy's, Pizza Hut, and Taco Bell
- Signalized intersection with great visibility and access
- Large trade area that draws from many surrounding communities, one of the fastest growing suburbs in Missouri
- 79 new residential building permits issued by May of 2016, highest totals in Cass County
- High traffic counts

[CLICK HERE TO VIEW MORE LISTING INFORMATION](#)

For More Information Contact:

DAVID BLOCK | 816.412.7400 | dblock@blockandco.com

MARK MCCONAHAY | 816.412.7386 | mmcconahay@blockandco.com

Exclusive Agents



RAYMORE GALLERIA NORTH

58 Highway & Kentucky Road (NEC), Raymore, MO

**MULTIPLE PAD
SITES AVAILABLE
FOR SALE**

DRONE AERIAL



KEY	
1	Firestone
2	Baffert's CARWASH
3	.80 acres
4	1.11 acres
5	.69 acres
6	.73 acres
7	.79 acres
8	1.3 acres
9	1.3 acres
10	1.3 acres
A	.48 acres
B	.38 acres



All information furnished regarding property for sale or lease is from sources deemed reliable, but no warranty or representation is made as to the accuracy thereof and the same is subject to errors, omissions, changes of prices, rental or other conditions, prior sale or lease or withdrawal without notice.



RAYMORE GALLERIA NORTH

58 Highway & Kentucky Road (NEC), Raymore, MO

**MULTIPLE PAD
SITES AVAILABLE
FOR SALE**

SITE PLAN

KEY	
1	Firestone
2	Bayhills CARWASH
3	.80 acres
4	1.11 acres
5	.69 acres
6	.73 acres
7	.79 acres
8	1.3 acres
9	1.3 acres
10	1.3 acres
A	.48 acres
B	.38 acres



SITE PLAN V60.c (2)
SCALE: 1" = 200'-0"
08/21/07



All information furnished regarding property for sale or lease is from sources deemed reliable, but no warranty or representation is made as to the accuracy thereof and the same is subject to errors, omissions, changes of prices, rental or other conditions, prior sale or lease or withdrawal without notice.

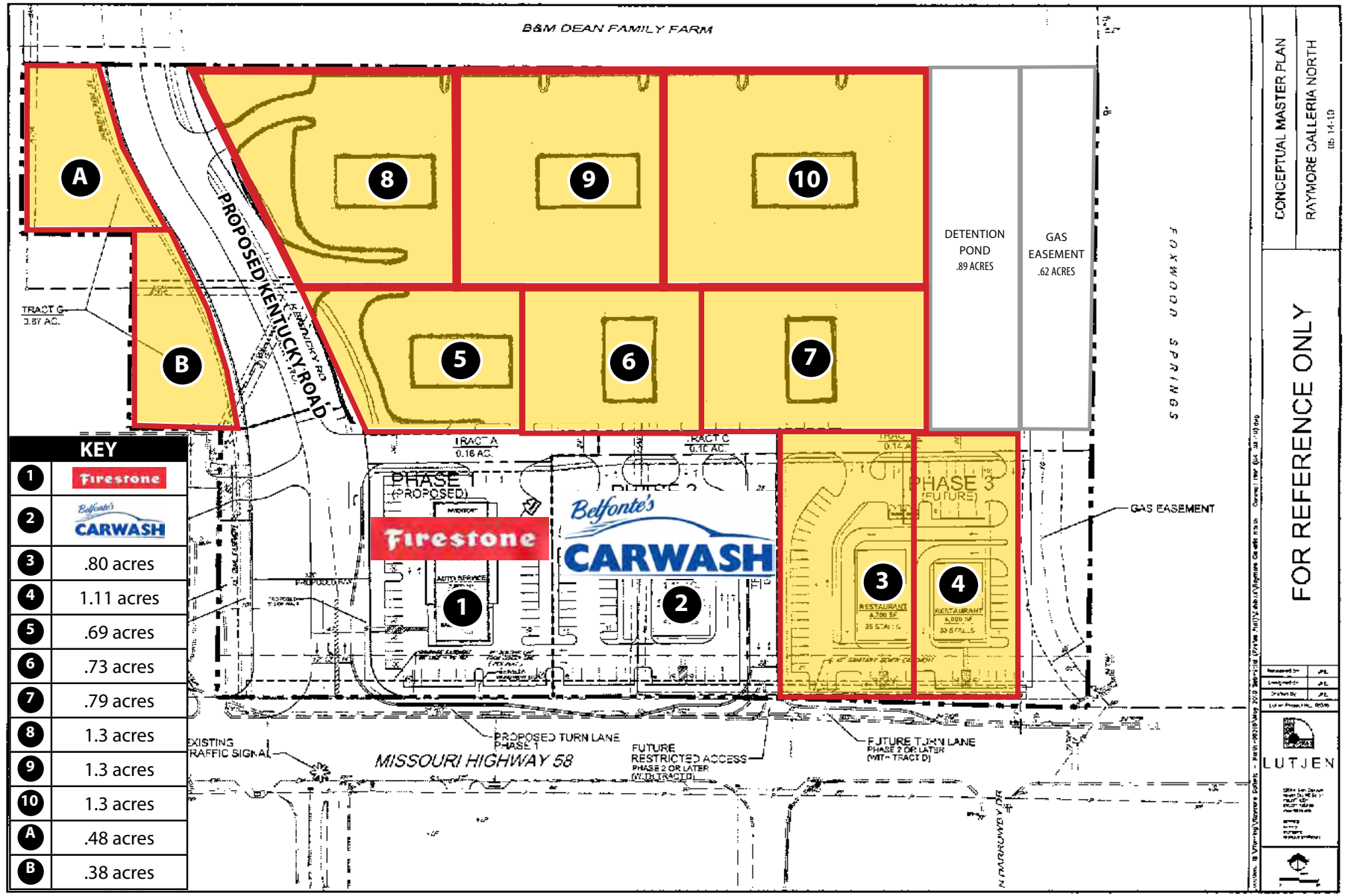


RAYMORE GALLERIA NORTH

58 Highway & Kentucky Road (NEC), Raymore, MO

**MULTIPLE PAD
SITES AVAILABLE
FOR SALE**

SITE PLAN



All information furnished regarding property for sale or lease is from sources deemed reliable, but no warranty or representation is made as to the accuracy thereof and the same is subject to errors, omissions, changes of prices, rental or other conditions, prior sale or lease or withdrawal without notice.



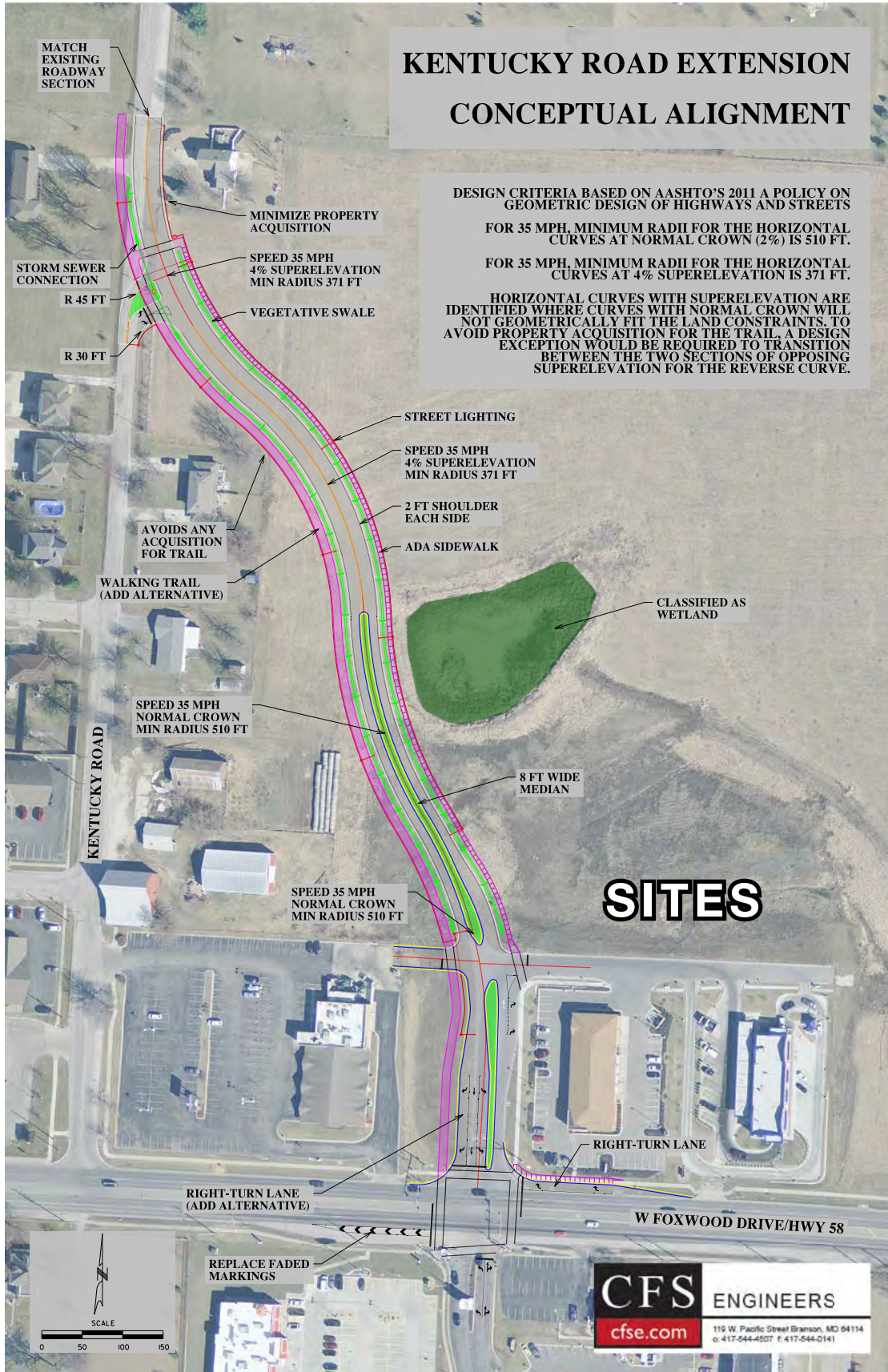
RAYMORE GALLERIA NORTH

58 Highway & Kentucky Road (NEC), Raymore, MO

**MULTIPLE PAD
SITES AVAILABLE
FOR SALE**

DRONE AERIAL



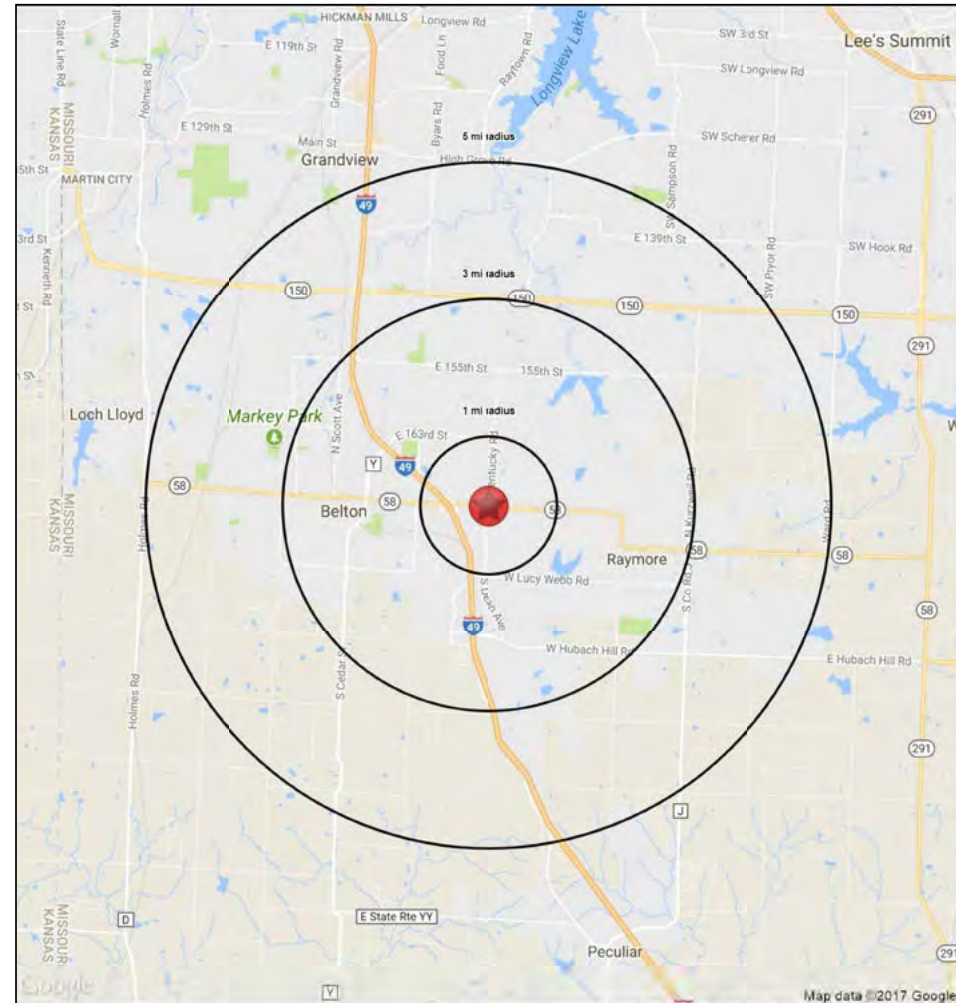
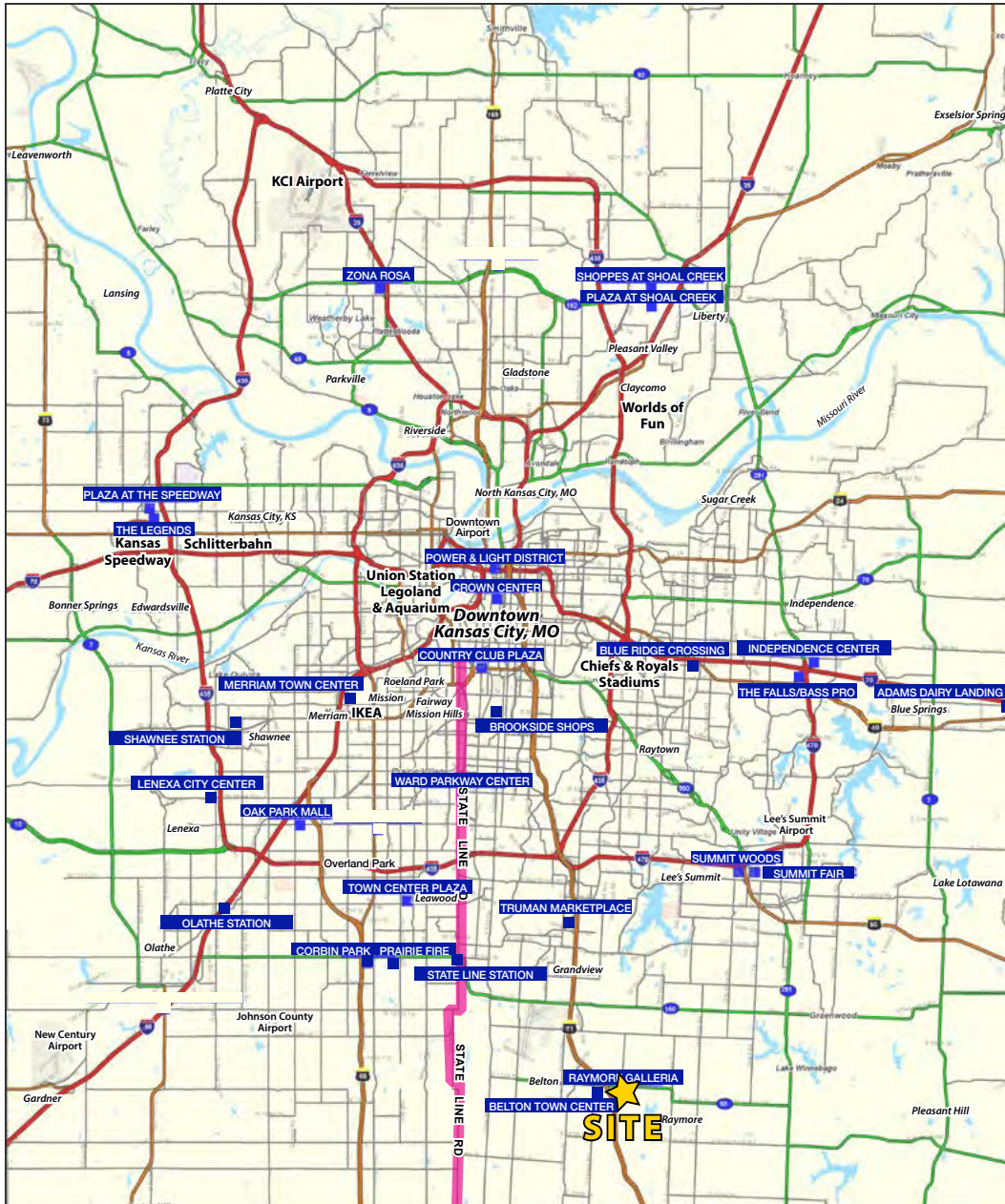




RAYMORE GALLERIA NORTH

58 Highway & Kentucky Road (NEC), Raymore, MO

MULTIPLE PAD SITES AVAILABLE FOR SALE





RAYMORE GALLERIA NORTH

58 Highway & Kentucky Road (NEC), Raymore, Missouri

58 Highway & Kentucky Rd		1 mi radius	3 mi radius	5 mi radius
Raymore, Missouri				
POPULATION	2018 Estimated Population	7,473	43,762	61,860
	2023 Projected Population	7,818	45,869	64,778
	2010 Census Population	6,458	40,875	58,389
	2000 Census Population	4,030	31,319	47,497
	Projected Annual Growth 2018 to 2023	0.9%	1.0%	0.9%
	Historical Annual Growth 2000 to 2018	4.7%	2.2%	1.7%
	2018 Median Age	38.3	37.2	36.7
HOUSEHOLDS	2018 Estimated Households	3,044	17,333	24,226
	2023 Projected Households	3,166	18,035	25,174
	2010 Census Households	2,514	15,392	21,763
	2000 Census Households	1,585	11,662	17,430
	Projected Annual Growth 2018 to 2023	0.8%	0.8%	0.8%
	Historical Annual Growth 2000 to 2018	5.1%	2.7%	2.2%
RACE AND ETHNICITY	2018 Estimated White	82.9%	83.1%	79.1%
	2018 Estimated Black or African American	9.6%	8.6%	12.4%
	2018 Estimated Asian or Pacific Islander	1.9%	1.4%	1.4%
	2018 Estimated American Indian or Native Alaskan	0.4%	0.6%	0.6%
	2018 Estimated Other Races	5.2%	6.2%	6.6%
	2018 Estimated Hispanic	7.0%	7.1%	7.3%
INCOME	2018 Estimated Average Household Income	\$73,662	\$80,295	\$79,514
	2018 Estimated Median Household Income	\$72,739	\$73,081	\$72,013
	2018 Estimated Per Capita Income	\$30,037	\$31,842	\$31,195
EDUCATION (AGE 25+)	2018 Estimated Elementary (Grade Level 0 to 8)	1.0%	1.7%	1.7%
	2018 Estimated Some High School (Grade Level 9 to 11)	7.0%	5.2%	5.3%
	2018 Estimated High School Graduate	30.4%	31.8%	31.6%
	2018 Estimated Some College	25.1%	26.7%	26.5%
	2018 Estimated Associates Degree Only	6.0%	6.9%	7.3%
	2018 Estimated Bachelors Degree Only	18.6%	17.2%	17.3%
	2018 Estimated Graduate Degree	11.9%	10.5%	10.1%
BUSINESS	2018 Estimated Total Businesses	311	1,221	1,520
	2018 Estimated Total Employees	3,699	12,287	19,327
	2018 Estimated Employee Population per Business	11.9	10.1	12.7
	2018 Estimated Residential Population per Business	24.0	35.8	40.7





OCTOBER 2018

	Single Family Units ^A	Multi-Family Units [%]	Total Units	S-F Units YTD	M-F Units YTD	Total Units YTD		Single Family Units ^A	Multi-Family Units [%]	Total Units	S-F Units YTD	M-F Units YTD	Total Units YTD		
CASS COUNTY							LEAVENWORTH COUNTY								
Archie	0	0	0	0	0	0	Basehor	26	0	26	121	0	121		
Belton	2	0	2	56	0	56	Lansing	0	0	0	1	0	1		
Cass County	10	0	10	68	0	68	Leav. County	0	0	0	65	0	65		
Cleveland	0	0	0	0	0	0	Leavenworth	2	0	2	27	0	27		
Garden City	0	0	0	1	0	1	Tonganoxie	4	0	4	29	0	29		
Harrisonville	0	0	0	8	0	8		32	0	32	243	0	243		
Lake Winnebago	3	0	3	13	0	13	WYANDOTTE COUNTY								
Lee's Summit	1	0	1	34	0	34	Bonner Springs	0	0	0	7	0	7		
Peculiar	7	0	7	58	0	58	Edwardsville	0	0	0	1	0	1		
Pleasant Hill	1	0	1	16	0	16	KCK/Wyandotte Co	15	0	15	167	0	167		
Raymore	10	0	10	167	12	179		15	0	15	175	0	175		
Village of Loch Lloyd	3	0	3	13	0	13	MIAMI COUNTY								
	37	0	37	434	12	446	Louisburg	0	0	0	13	0	13		
CLAY COUNTY							Miami County	4	0	4	49	0	49		
Clay County	7	0	7	38	0	38	Osawatomie	0	0	0	0	0	0		
Excelsior Springs	1	0	1	13	0	13	Paola	1	0	1	6	0	6		
Gladstone	2	0	2	14	0	14	Spring Hill	0	0	0	19	0	19		
Kansas City	16	0	16	433	0	433		5	0	5	87	0	87		
Kearney	9	0	9	103	0	103	Totals								
Lawson	0	0	0	0	0	0		447	667	1114	4932	3229	8161		
Liberty	1	0	1	37	0	37	Comparison of Single Family								
North Kansas City	0	0	0	1	0	1	Building Units for Greater Kansas City								
Pleasant Valley	0	0	0	0	0	0	(Cass, Clay, Jackson, Platte, Johnson, Leavenworth, Miami, Wyandotte Counties)								
Smithville	46	0	46	179	0	179	Month/Year	2011	2012	2013	2014	2015	2016	2017	2018
	82	0	82	818	0	818	January	90	188	273	287	240	274	457	425
JACKSON COUNTY							February	121	182	224	216	260	408	477	461
Blue Springs	24	0	24	351	15	366	March	180	270	335	362	393	542	571	550
Buckner	0	0	0	0	0	0	April	210	277	444	439	437	523	562	542
Grain Valley	6	0	6	110	0	110	May	230	294	337	385	395	503	504	594
Grandview	1	0	1	13	156	169	June	262	268	333	364	438	578	567	577
Greenwood	0	0	0	0	0	0	July	204	288	409	375	399	494	512	485
Independence	5	0	5	119	0	119	August	205	260	354	352	425	536	480	514
Jackson County	13	0	13	79	0	79	September	202	379	384	383	462	424	514	337
Kansas City	8	57	65	78	1028	1106	October	205	331	369	468	459	466	583	447
Lake Lotawana	0	0	0	16	0	16	November	185	283	340	312	360	417	502	
Lee's Summit	18	0	18	305	180	485	December	207	279	288	328	432	352	468	
Oak Grove	0	0	0	17	0	17	Annual Total	2,301	3,299	4,090	4,271	4,700	5,517	6,197	4,932
Raytown	0	0	0	0	0	0	Comparison of Permits By Units Issued Year to Date								
Sugar Creek	0	0	0	0	0	0	2011 - 2018								
	75	57	132	1088	1379	2467		S-F Units	M-F Units	Total Units					
PLATTE COUNTY							2011	1909	600	2509					
Kansas City	12	0	12	172	0	172	2012	2737	1417	4154					
Parkville	11	0	11	81	0	81	2013	3462	2493	5955					
Platte City	0	0	0	1	0	1	2014	3631	3246	6877					
Platte County	19	0	19	158	0	158	2015	3908	2970	6878					
Riverside	4	0	4	28	0	28	2016	4748	3543	8291					
Weatherby Lake	1	0	1	12	0	12	2017	5227	1903	7130					
Weston	0	0	0	0	0	0	2018	4932	3229	8161					
	47	0	47	452	0	452	*The Single Family number is units and includes both attached and detached units.								
JOHNSON COUNTY							%Multi-Family units are in buildings with 5 or more units.								
De Soto	5	0	5	34	0	34	# Not available at time of report								
Edgerton	0	0	0	0	0	0	<i>Permit information reflects the most recent data at time of publication. In order to ensure accurate recording of residential building permit statistics, the HBA may revise monthly and year-to-date figures when updated data is made available. Copyright 2018 Home Builders Assoc of Greater Kansas City. All rights reserved.</i>								
Fairway	1	0	1	8	0	8									
Gardner	8	0	8	110	0	110									
Johnson County	6	0	6	46	0	46									
Leawood	5	0	5	51	0	51									
Lenexa	38	0	38	312	0	312									
Merriam	0	0	0	1	0	1									
Mission Hills	0	0	0	4	0	4									
Olathe	41	240	281	447	274	721									
Overland Park	26	370	396	322	1564	1886									
Prairie Village	8	0	8	55	0	55									
Roeland Park	0	0	0	0	0	0									
Shawnee	9	0	9	114	0	114									
Spring Hill	7	0	7	127	0	127									
Westwood	0	0	0	4	0	4									
	154	610	764	1635	1838	3473									