

Trey Building

3257 16th Avenue West, Seattle, WA

Former Denali Fitness

10,482 SF

Ideal for high-tech office, flex space

Interbay location: between Queen Anne, Magnolia, and Ballard neighborhoods

Built in 1991 / renovated in 2007

Parking: 10 stalls available

\$22.00 / SF, NNN

Triple Net Est. \$4.45/SF

Available now



Contact

Ken Hirata

206.296.9625

khirata@kiddermathews.com

Jim Lovsted

206.398.2271

jlovsted@kiddermathews.com



Trey Building

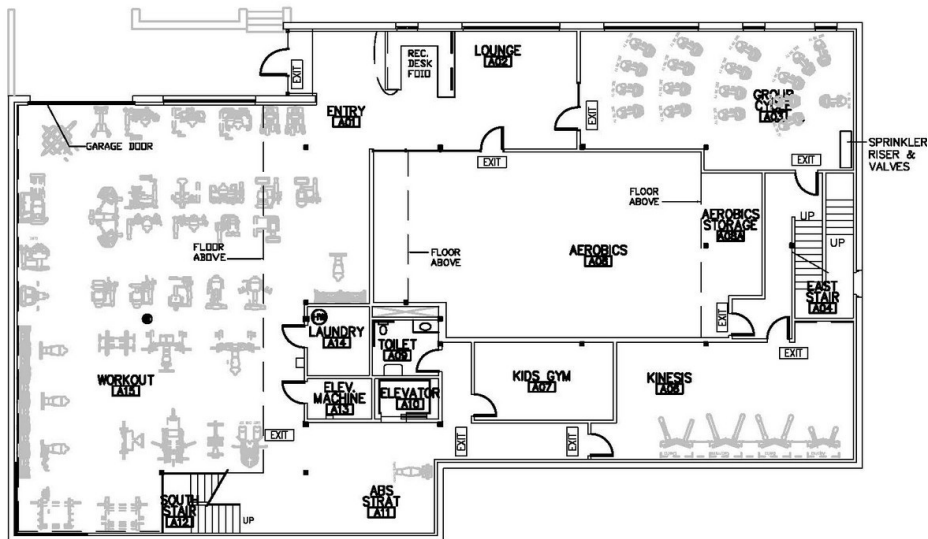
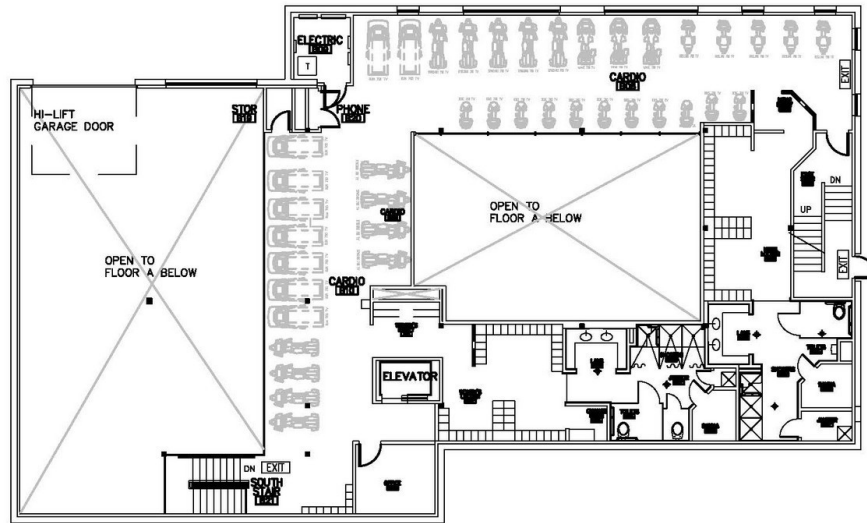


Contact

Ken Hirata
206.296.9625
khirata@kiddermathews.com

Jim Lovsted
206.398.2271
jlovsted@kiddermathews.com

Trey Building - Floor Plans



Contact

Ken Hirata
 206.296.9625
 khirata@kiddermathews.com

Jim Lovsted
 206.398.2271
 jlovsted@kiddermathews.com