

FOR LEASE Fully Built-Out Medical Office Suites Available

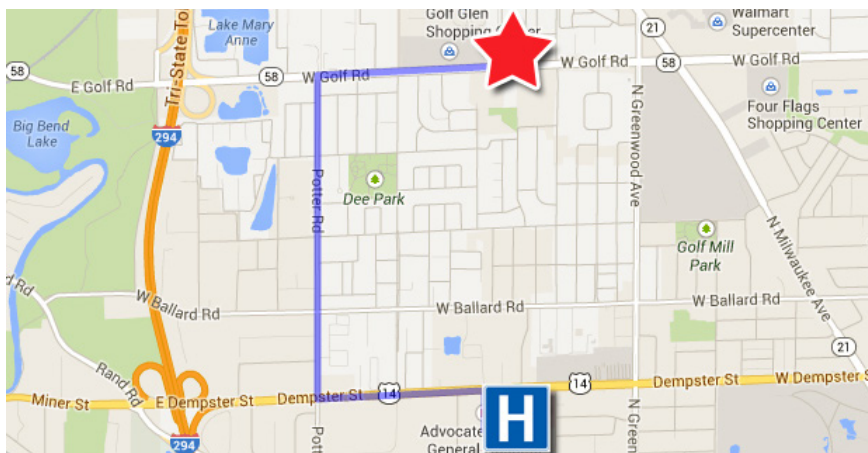
Golf Surgical Center | 8901 Golf Road | Des Plaines, Illinois



Property Highlights

Lutheran General Hospital is located less than one mile south!

- Suite 203 - 2,017 RSF
- Suite 205 - 1,398 RSF
- Available suites combinable to 3,415 RSF
- Tenant improvement allowance available
- Renovated common areas
- Surgery center located on 1st floor



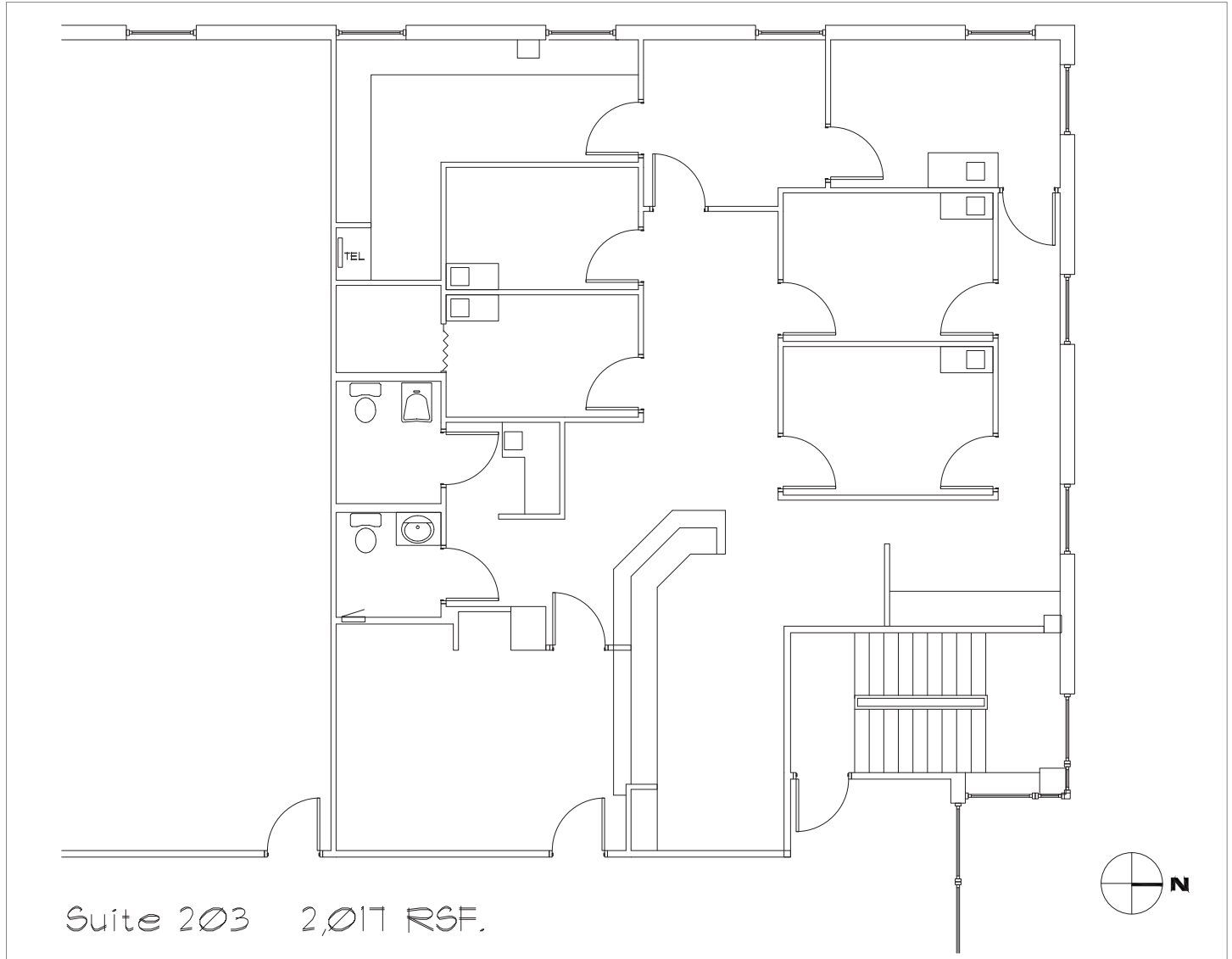
Contact

Robert Titzer
 p 312.458.4468
 rtitzer@hsacommercial.com

HSA Commercial: 100 S Wacker Drive, Suite 950 | Chicago, Illinois 60606 | www.hsacommercial.com

Above information is subject to verification and no liability for errors or omissions is assumed. Price is subject to change and listing may be withdrawn without notice. HSA Commercial Inc. and listing broker are members and/or officers of the ownership entity and are licensed RE Brokers.

Suite 203 Space Plan



Suite 203 2,017 RSF.

