

For Sale

Vacant Land

±19.9 Acres | \$1,250,000



12055 Chef Menteur Hwy

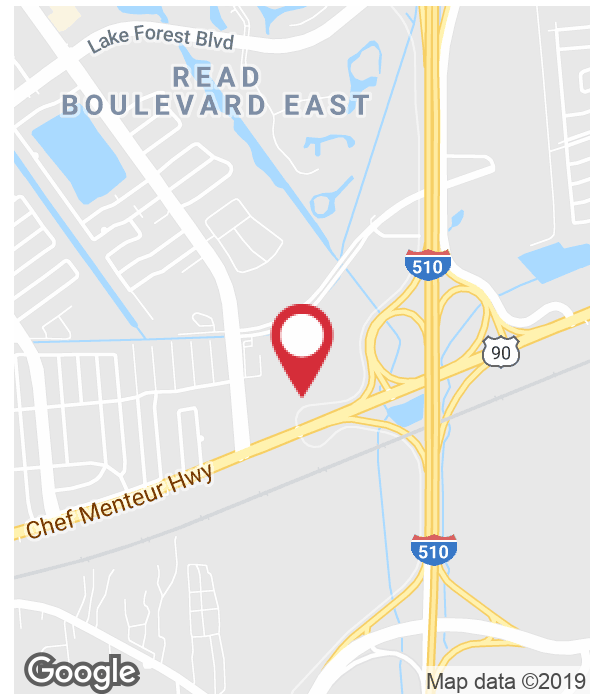
New Orleans, Louisiana 70129

Property Highlights

- 19.9 acres of prime commercial development site on Bullard and Chef Menteur Highway
- Near Eastover and McKendall Estates
- Subdivisions with average household incomes in 2017 of ±\$100,710
- Property needs to be cleared and developed
- Excellent for financial institution, gas station, hotel/motel, microbrewery, office, restaurant/fast food, light manufacturing, or movie studio
- Frontage on Chef Menteur Highway

Sale Price

\$1,250,000



For more information

Cathy McGehee, CCIM

O: 504 569 9489 | C: 504 451 9087
csmcgehee@latterblum.com

Michael Naquin

O: 504 525 1311 | C: 504 444 3972
mnaquin@latterblum.com

CALL OR EMAIL FOR MORE INFORMATION

NO WARRANTY OR REPRESENTATION, EXPRESS OR IMPLIED, IS MADE AS TO THE ACCURACY OF THE INFORMATION CONTAINED HEREIN, AND THE SAME IS SUBMITTED SUBJECT TO ERRORS, OMISSIONS, CHANGE OF PRICE, RENTAL OR OTHER CONDITIONS, PRIOR SALE, LEASE OR FINANCING, OR WITHDRAWAL WITHOUT NOTICE, AND OF ANY SPECIAL LISTING CONDITIONS IMPOSED BY OUR PRINCIPALS NO WARRANTIES OR REPRESENTATIONS ARE MADE AS TO THE CONDITION OF THE PROPERTY OR ANY HAZARDS CONTAINED THEREIN ARE ANY TO BE IMPLIED. LICENSED IN LOUISIANA.

430 Notre Dame Street
New Orleans, LA 70130
504 525 1311 tel
latterblum.com

KEY FACTS



392,887

Population

36.2

Median Age



163,929

2018 Total Households



BUSINESS



14,621

Total Businesses



209,459

Total Employees

INCOME



\$17,347

Median Net Worth



\$64,720

2018 Average Household Income

EDUCATION



14%

No High School Diploma



23%

High School Graduate



26%

Some College



37%

Bachelor's/Grad/Prof Degree

EMPLOYMENT



64%

White Collar



15%

Blue Collar



21%

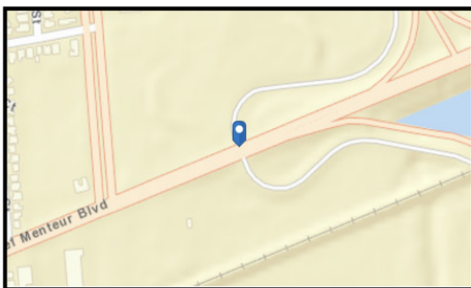
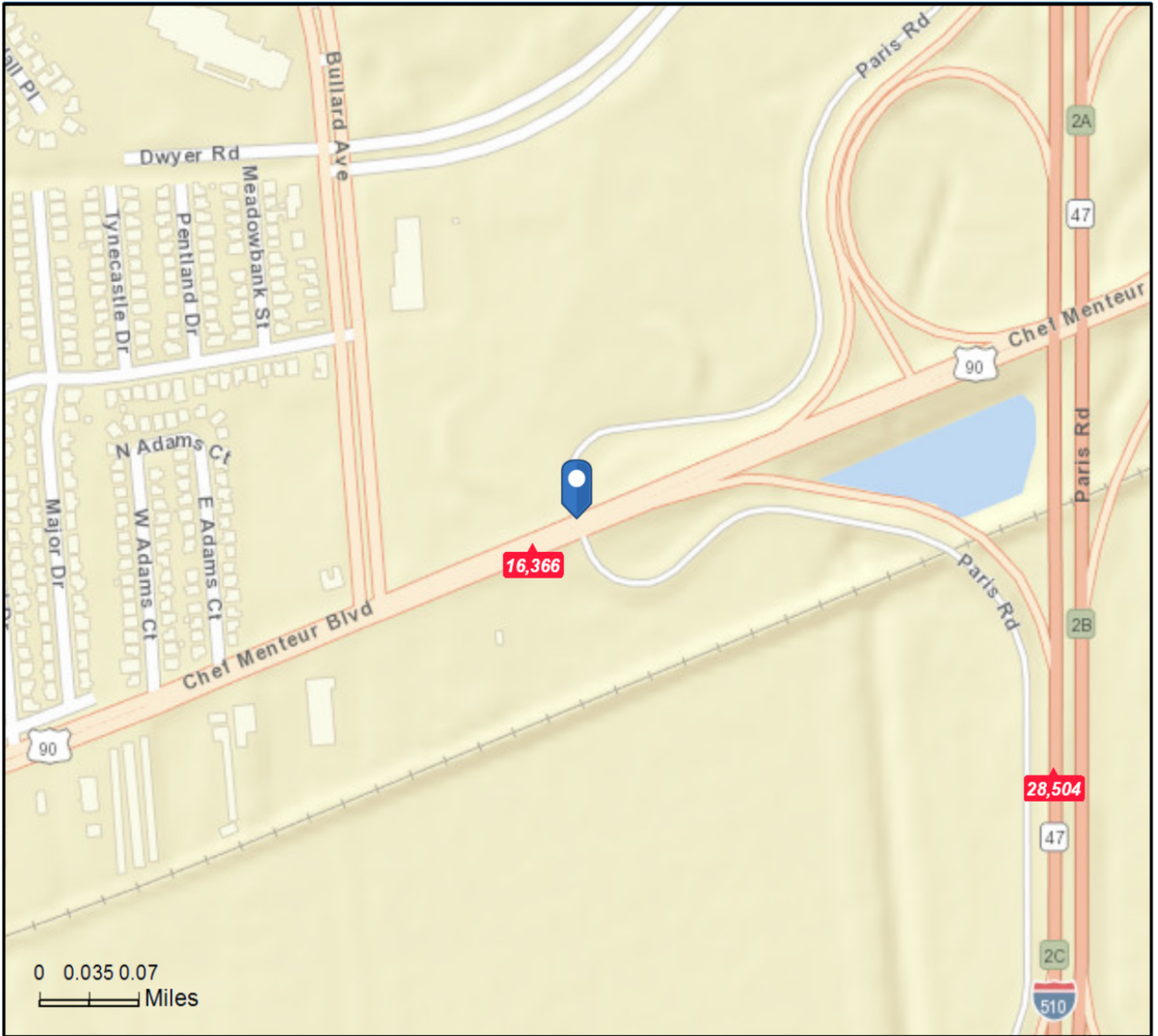
Services



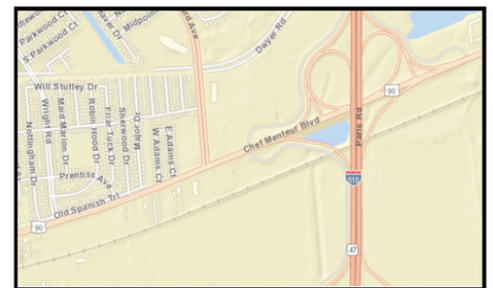
6.9%

Unemployment Rate

Traffic Count Map

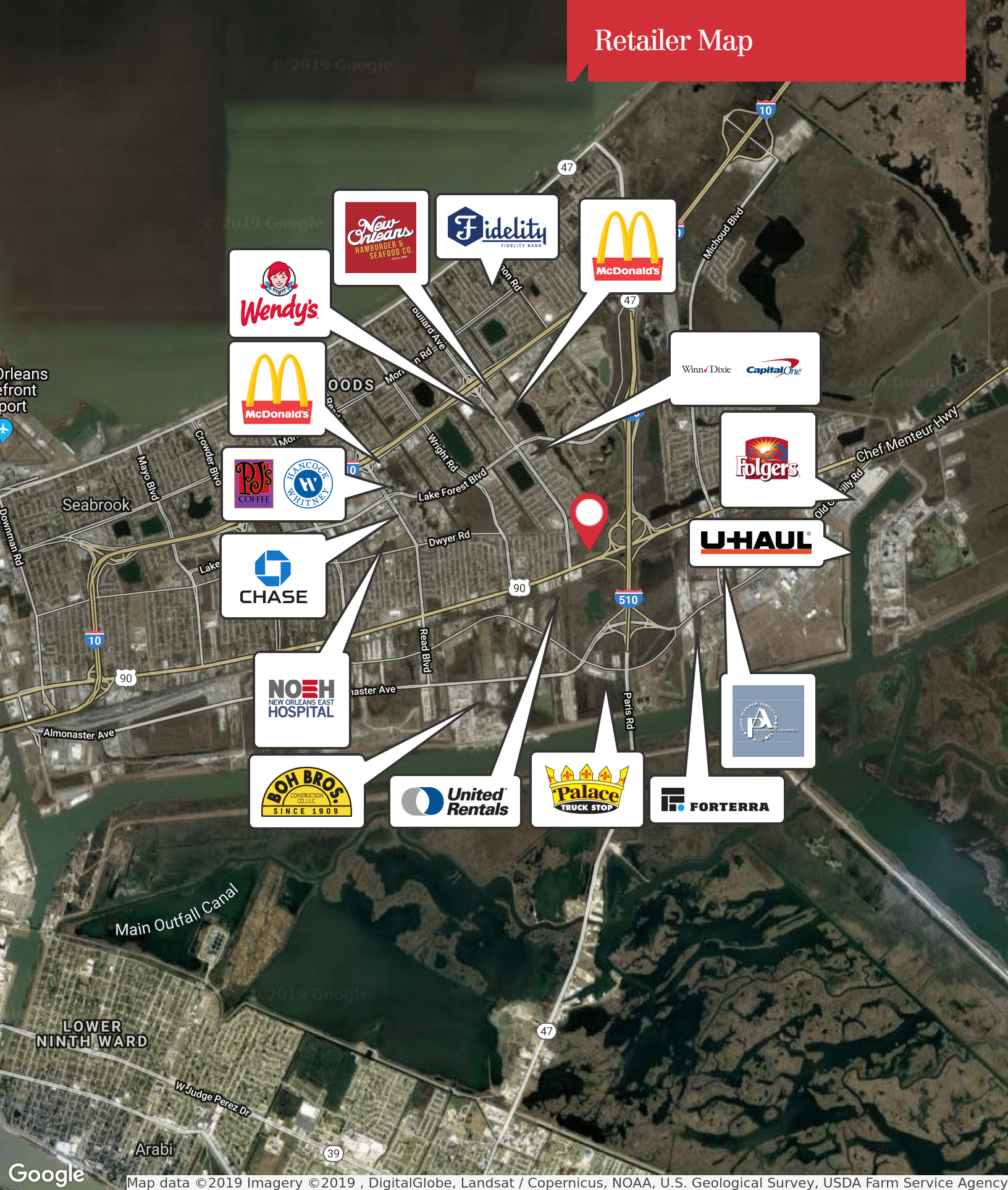


- Average Daily Traffic Volume**
- ▲ Up to 6,000 vehicles per day
 - ▲ 6,001 - 15,000
 - ▲ 15,001 - 30,000
 - ▲ 30,001 - 50,000
 - ▲ 50,001 - 100,000
 - ▲ More than 100,000 per day



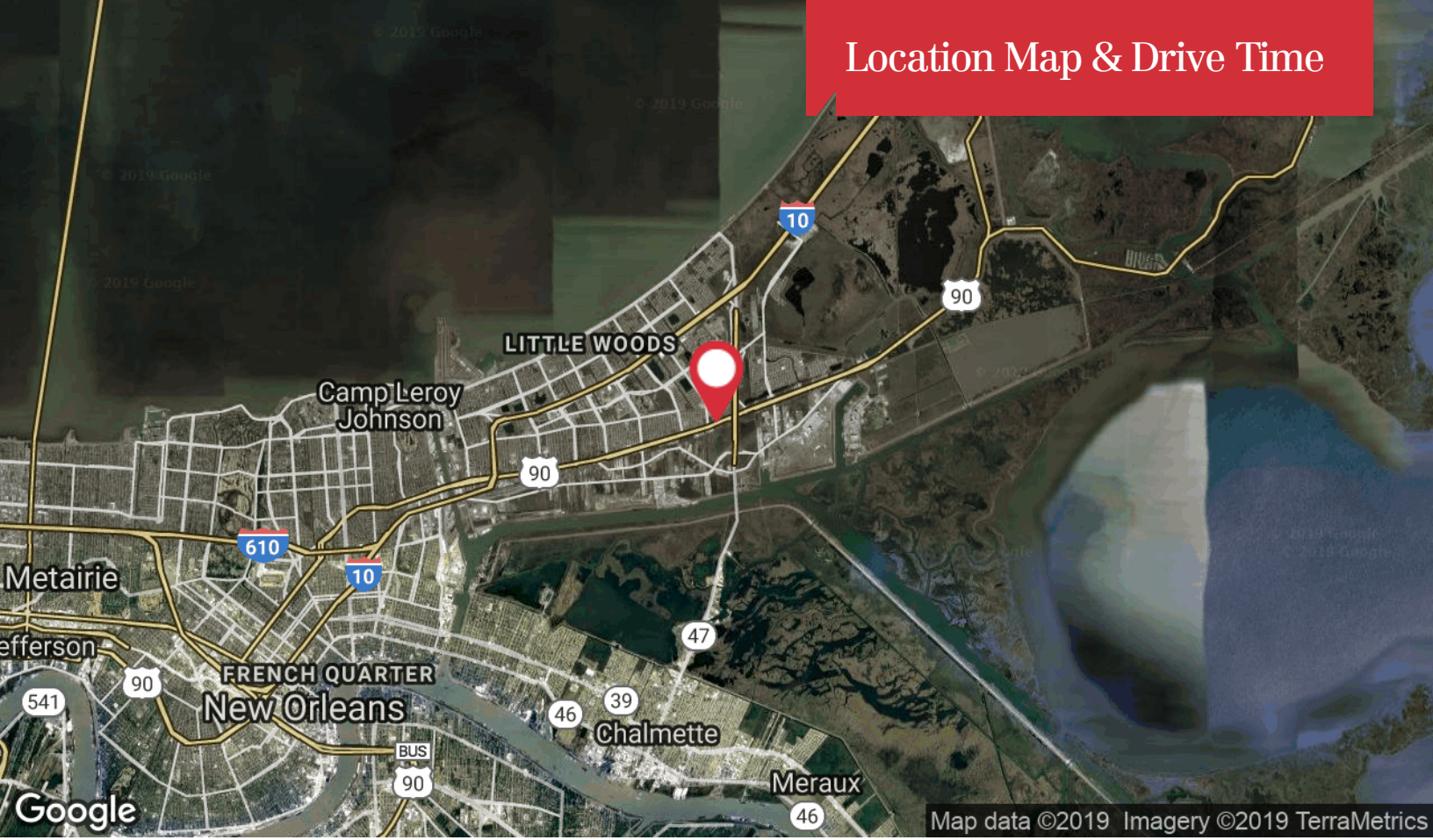
Source: ©2019 Kalibrate Technologies (Q4 2018).

Retailer Map



Map data © 2019 Imagery © 2019, DigitalGlobe, Landsat / Copernicus, NOAA, U.S. Geological Survey, USDA Farm Service Agency

Location Map & Drive Time



Map data ©2019 Imagery ©2019 TerraMetrics

